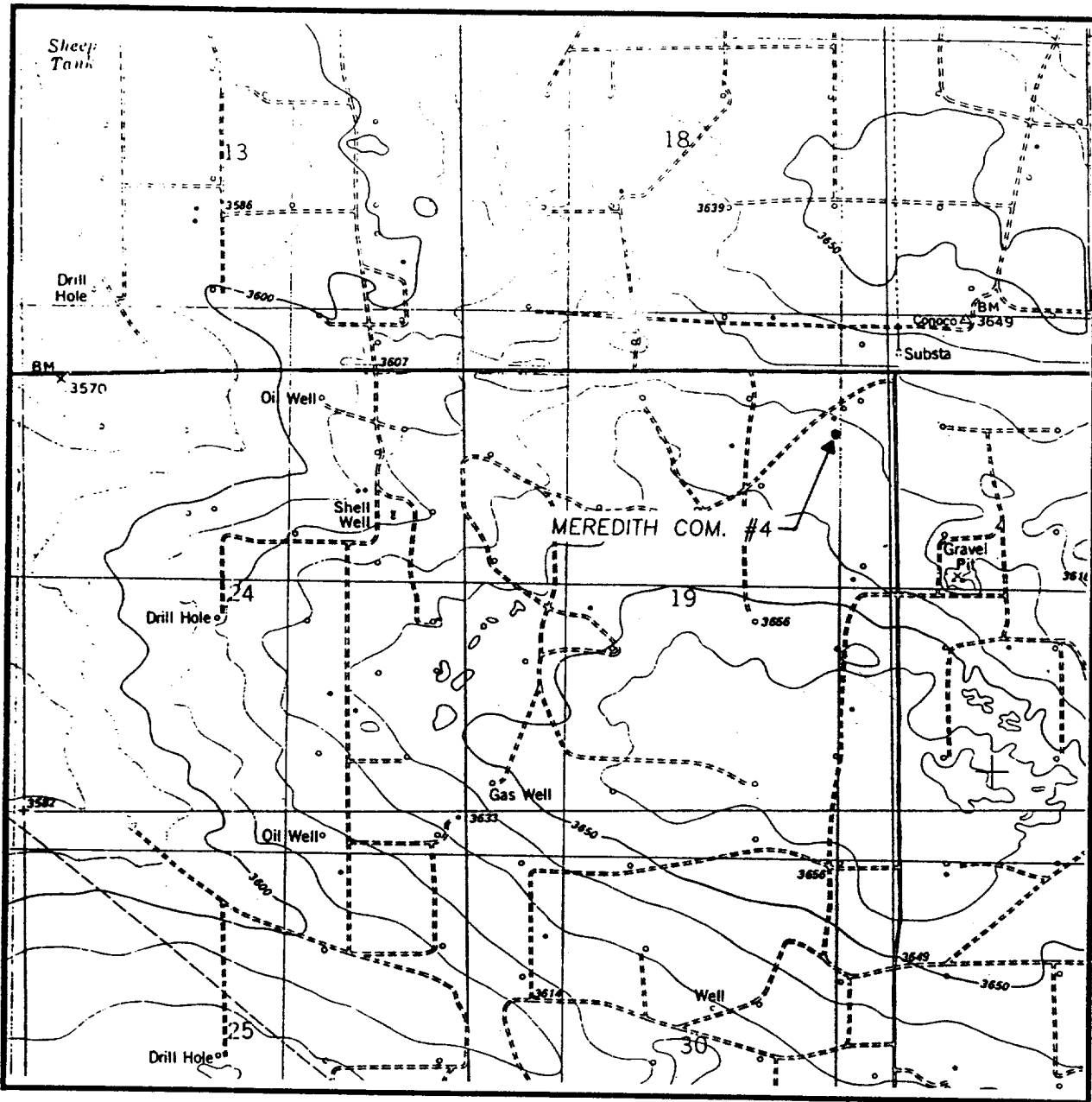


# LOCATION VERIFICATION MAP



SCALE: 1" = 2000'

CONTOUR INTERVAL:  
OIL CENTER - 10'

SEC. 19 TWP. 21-S RGE. 36-E

SURVEY N.M.P.M.

COUNTY LEA

DESCRIPTION 785' FNL & 660' FEL

ELEVATION 3629.9'

OPERATOR CHEVRON U.S.A. INC.

LEASE MEREDITH COM.

U.S.G.S. TOPOGRAPHIC MAP

OIL CENTER, N.M.

**JOHN WEST ENGINEERING  
HOBBS, NEW MEXICO**

**(505) 393-3117**