

OPER. CONID NO. 12024

PROPERTY NO. 5791

POOL CODE 15200

4 TRIPLICATE*
Instructions on
reverse side)

Form approved.
Budget Bureau No. 1004-0136
Expires: December 31, 1991

DEPARTMENT EFF. DATE 8/25/97

BUREAU API NO. 30-025-34112

APPLICATION FOR... N

1a. TYPE OF WORK

DRILL ☒

DEEPEN ☐

7-17-97 NM
7/18/97 30

b. TYPE OF WELL

OIL
WELL ☒

GAS
WELL ☐

OTHER

SINGLE
ZONE ☐

MULTIPLE
ZONE ☐

2. NAME OF OPERATOR

John H. Hendrix Corporation

(915) 684-6631

3. ADDRESS AND TELEPHONE NO.

P. O. Box 3040, Midland, TX 79702-3040

4. LOCATION OF WELL (Report location clearly and in accordance with any State requirements.)*

At surface

2310' FSL & 330' FWL, Unit L, Sec. 30, T20S, R39E

At proposed prod. zone

Same

14. DISTANCE IN MILES AND DIRECTION FROM NEAREST TOWN OR POST OFFICE*

7.5 miles Northeast of Eunice, NM

15. DISTANCE FROM PROPOSED*

LOCATION TO NEAREST

PROPERTY OR LEASE LINE, FT.

(Also to nearest drlg. unit line, if any)

330'

16. NO. OF ACRES IN LEASE

40

17. NO. OF ACRES ASSIGNED

TO THIS WELL

40

18. DISTANCE FROM PROPOSED LOCATION*

TO NEAREST WELL, DRILLING, COMPLETED,

OR APPLIED FOR, ON THIS LEASE, FT.

660'

19. PROPOSED DEPTH

8000'

20. ROTARY OR CABLE TOOLS

Rotary

21. ELEVATIONS (Show whether DF, RT, GR, etc.)

Ground 3571'

22. APPROX. DATE WORK WILL START*

August 20, 1997

23.

PROPOSED CASING AND CEMENTING PROGRAM

SIZE OF HOLE	GRADE, SIZE OF CASING	WEIGHT PER FOOT	SETTING DEPTH	QUANTITY OF CEMENT
11"	K-55, 8-5/8"	24#	1650'	860 sx. Circ. WITNESS
7-7/8"	K-55, 5-1/2"	15.5# & 17#	8000'	1115 Sx. 1600' WITNESS

It is proposed to drill this wellbore as a vertical Drinkard Abo producer according to the drilling plan outlined in the following attachments:

1. Well Location & Acreage Dedication Plat (C-102)
2. Proposed Drilling Program
3. Surface Use Plan
4. Vicinity Map
5. Topo & Lease Road Map
6. Flowline Right-of-Ways
7. Standard Rig Layout
8. BOP and Choke Manifold Specifications (2 diagrams)
9. H2S Drilling Operations Plan & Diagram

APPROVAL SUBJECT TO
GENERAL REQUIREMENTS AND
SPECIAL STIPULATIONS
ATTACHED

BUREAU OF LAND MGMT.
NRLSBAD RESOURCE AREA

1997 JUL 16 A 11:16

RECEIVED

An archeological survey will be ordered for this location and forwarded when completed. The undersigned accepts all applicable terms, conditions, stipulations, and restrictions concerning operations conducted on the leased CONT'I

IN ABOVE SPACE DESCRIBE PROPOSED PROGRAM: If proposal is to deepen, give data on present productive zone and proposed new productive zone. If proposal is to drill or deepen directionally, give pertinent data on subsurface locations and measured and true vertical depths. Give blowout preventer program, if any.

24.

SIGNED

Ronnie H. Westbrook

TITLE Vice President

DATE July 11, 1997

(This space for Federal or State office use)

PERMIT NO.

APPROVAL DATE

Application approval does not warrant or certify that the applicant holds legal or equitable title to those rights in the subject lease which would entitle the applicant to conduct operations thereon.

CONDITIONS OF APPROVAL, IF ANY:

APPROVED BY

TITLE

DATE

*See Instructions On Reverse Side

DISTRICT I

P.O. Box 1900, Hobbs, NM 88241-1900

DISTRICT II

P.O. Drawer DD, Artesia, NM 88211-0719

DISTRICT III

1000 Rio Brazos Rd., Aztec, NM 87410

DISTRICT IV

P.O. Box 2088, Santa Fe, NM 87504-2088

State of New Mexico

Energy, Minerals and Natural Resources Department

Form C-102

Revised February 10, 1994
 Submit to Appropriate District Office
 State Lease - 4 Copies
 Fee Lease - 3 Copies

OIL CONSERVATION DIVISION

P.O. Box 2088
 Santa Fe, New Mexico 87504-2088

☐ AMENDED REPORT

WELL LOCATION AND ACREAGE DEDICATION PLAT

API Number 30-025-34112	Pool Code 15200	Pool Name D-K Abo
Property Code 005191	Property Name JONES FEDERAL	Well Number 2
OGRID No. 012024	Operator Name JOHN H. HENDRIX CORPORATION	Elevation 357'

Surface Location

UL or lot No.	Section	Township	Range	Lot Idn	Feet from the	North/South line	Feet from the	East/West line	County
L	30	20 S	39 E		23'0	SOUTH	330	WEST	LEA

Bottom Hole Location If Different From Surface

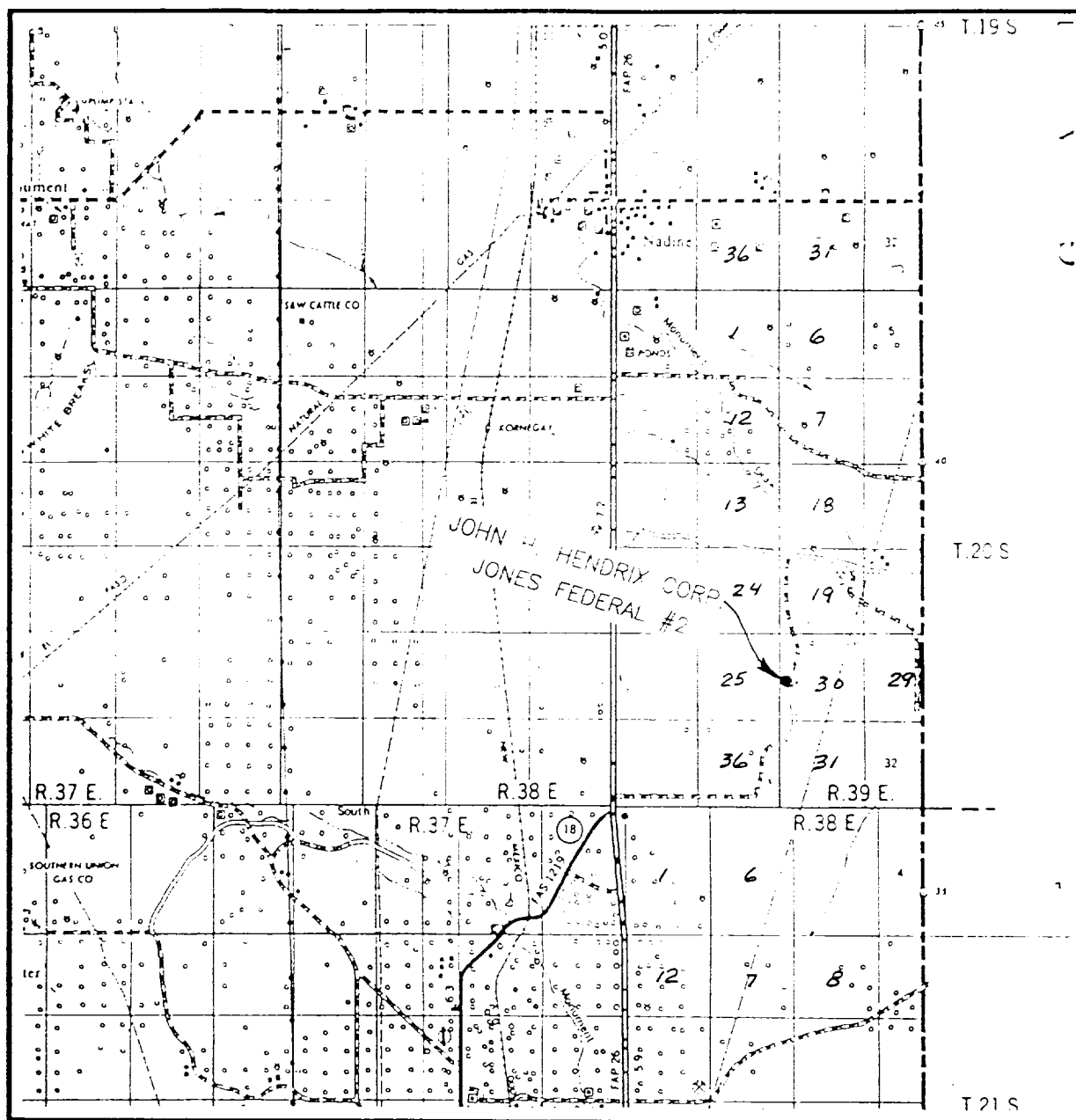
UL or lot No.	Section	Township	Range	Lot Idn	Feet from the	North/South line	Feet from the	East/West line	County

Dedicated Acres 40	Joint or Infill	Consolidation Code	Order No.
------------------------------	-----------------	--------------------	-----------

NO ALLOWABLE WILL BE ASSIGNED TO THIS COMPLETION UNTIL ALL INTERESTS HAVE BEEN CONSOLIDATED
 OR A NON-STANDARD UNIT HAS BEEN APPROVED BY THE DIVISION

	OPERATOR CERTIFICATION I hereby certify the the information contained herein is true and complete to the best of my knowledge and belief. <i>Ronnie H. Westbrook</i> Signature Ronnie H. Westbrook Printed Name Vice President Title July 11, 1997 Date
	SURVEYOR CERTIFICATION I hereby certify that the well location shown on this plat was plotted from field notes of actual surveys made by me or under my supervision, and that the same is true and correct to the best of my belief. JUNE 20, 1997 Date Surveyed Signature & Seal of Professional Surveyor <i>Ronald J. Edson</i> W.O. Num. 97-11-104'
	Certificate No. JOHN W. WEST, 676 RONALD J. EDSON, 3239 GARY G. EDSON, 1264

VICINITY MAP



SEC. 30 TWP. 20-S RGE. 39-E

SURVEY N.M.P.M.

COUNTY LEA

DESCRIPTION 23'0" FS. & 330' FWL

ELEVATION 3571'

OPERATOR JOHN H. HENDRIX CORP.

LEASE JONES FEDERAL

JOHN WEST ENGINEERING
HOBBS, NEW MEXICO
(505) 393-3117

JOHN H. HENDRIX CORPORATION
DRILLING PROGRAM

Attachment to Form 3160-3

Jones Federal #2

Surface Location: 2310' FSL & 330' FWL, Unit Letter L, Section 30, T20S, R39E

Ground Elevation: 3571'

Bottom Hole Location: Same

Lea County, New Mexico

1. Geologic Name and Estimated Tops:

Rustler	1635'	Blinebry	6055'
Yates	2900'	Tubb	6530'
Seven Rivers	3010'	Drinkard	6885'
Queen	3430'	Abo	7125'
San Andres	4325'		

2. Estimated Depth to Fresh Water:

Possible fresh water from surface to 400'

Anticipated Possible Hydrocarbon Bearing Zones: Drinkard and Abo

The fresh water sands will be protected by setting 8-5/8" casing at 1650' and circulating cement back to surface. The 5-1/2" production string will be set at 8000' TD and cement back to 8-5/8" casing shoe.

3. Proposed Casing Program:

Hole Size	Interval	OD Casing	Weight, Grade, Jt Cond.
11"	0-1650'	8-5/8"	24#, K55, ST&C, New
7-7/8"	0-6000'	5-1/2"	15.5#, K55, ST&C, New
7-7/8"	6000-8000'	5-1/2"	17#, K55, ST&C, New

4. Proposed Cementing Program:

8-5/8" Surface Csg.:	Lead - Cement w/ 650 sx. of Class "C" w/ 2% CaCl, 4% Gel Tail - Cement w/ 210 sx. of Class "C" w/ 2% CaCl Circulate cement to surface
5-1/2" Prod. Csg.:	Lead - Cement w/ 595 sx. of Class "C" w/ 6% Gel, 5 lb/sx. Salt Tail - Cement w/ 520 sx. Class "H" w/ 5 lb/sx. Salt, 9.6 lb/sx. Silicalite TOC @ 8-5/8" casing shoe

5. Minimum Specifications for Pressure Control:

The blowout preventer equipment (BOP) shown in the attachments will consist of a double ram-type (3000 psi WP) preventer. It will be hydraulically operated and will be equipped with pipe rams on top and blind rams on bottom. The BOP will be nipped up on the 8-5/8" casing and used continuously until TD is reached. Ram-type BOP and accessory equipment will be tested to

1000 psi. Pipe rams will be operationally checked each 24 hour period. Blind rams will be operationally checked on each trip out of the hole. A 2" kill line and 3" choke line will be included in the drilling spool located below the ram-type BOP. Other accessories to the BOP equipment will include a rotating head, kelly cock and floor safety valve (inside BOP) and choke lines and choke manifold with 3000 psi WP rating.

6. Types and Characteristics of the Proposed Mud System:

The well will be drilled to TD with:

Depth	Type	Weight (ppg)	Viscosity (sec)
Surface to 1650'	Fresh Water Spud Mud	8.5- 8.8	30-33
1650' to 8000' TD	Brine Water w/ Loss Circ. Additvs. (Saltgel & Starch)	9.8-10.2	28-30

Sufficient mud materials to maintain mud properties and meet minimum lost circulation and weight increase requirements will be kept at the wellsite at all times.

7. Auxiliary Well Control and Monitoring Equipment:

- (A) A kelly cock will be kept in the drill string at all times.
- (B) A full opening drill pipe stabbing valve (inside BOP) with proper drill pipe connections will be on the rig floor at all times.
- (C) The drilling fluids system will be visually monitored at all times.
- (D) A mud-logging unit will monitor drilling penetration rate and hydrocarbon shots from somewhere below the surface casing.

8. Logging, Testing and Coring Program:

- (A) No drill stem tests are planned.
- (B) Compensated Neutron/LDT Log - GR and Dual Laterolog w/ MSFL. The Gamma Ray Log will be continued back to surface.
- (C) Mud-logging unit will be used below 2800'.
- (D) No cores are anticipated.
- (E) Other testing procedures may be used after the production casing has been set depending on shows and other testing indicators.

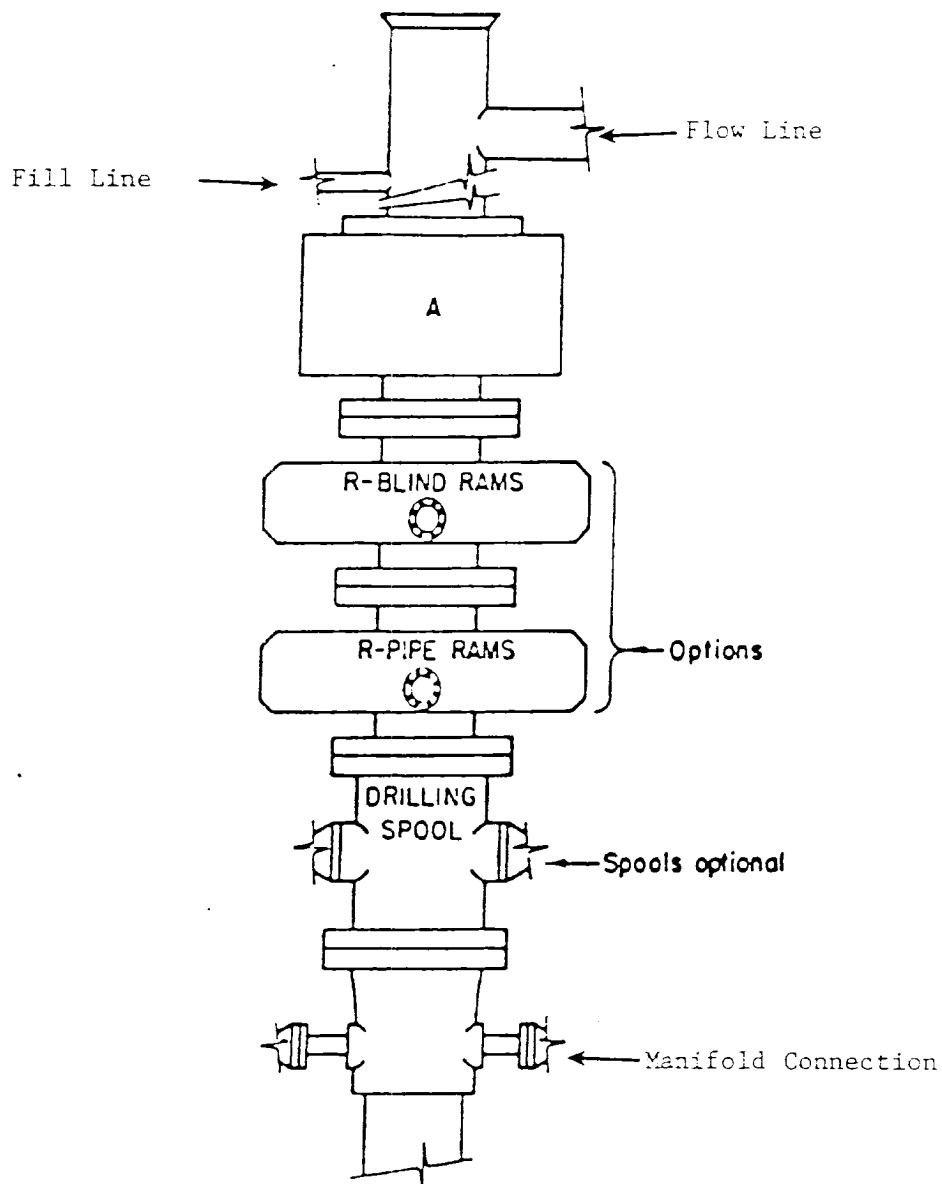
9. Abnormal Conditions, Pressures, Temperatures, & Potential Hazards:

No abnormal pressures or temperatures are anticipated. The estimated bottom-hole temperature at TD is 110 deg. F and the estimated maximum bottom hole pressure is about 2900 psi. No hydrogen sulfide or other hazardous gases or fluids are anticipated.

10. Anticipated Starting Date and Duration of Operations:

It is planned that operations will commence shortly after approval of this application, around August 20, 1997 or depending on rig availability. A company representative will inform the BLM of our intentions prior to spudding. It is anticipated that once drilling operations commence, they will last approximately 20 days, with completion operations lasting approximately 10 days. Production will be routed through the current Jones Federal battery.

File: drilgprg.doc



ARRANGEMENT SRRA

900 Series
3000 PSI WP

John H. Hendrix Corporation
Sketch of BOP
To Be Used On
Jones Federal No. 2
2310' FSL & 330' FWL, Unit 1
Sec. 30, T20S - R39E,