

DISTRICT I  
P.O. Box 1980, Hobbs, NM 88241-1980

DISTRICT II  
P.O. Drawer DD, Artesia, NM 88211-0719

DISTRICT III  
1000 Rio Brazos Rd., Aztec, NM 87410

DISTRICT IV  
P.O. BOX 2088, SANTA FE, N.M. 87504-2088

State of New Mexico  
Energy, Minerals and Natural Resources Department

Form C-102  
Revised February 10, 1994  
Submit to Appropriate District Office  
State Lease - 4 Copies  
Fee Lease - 3 Copies

OIL CONSERVATION DIVISION

P.O. Box 2088  
Santa Fe, New Mexico 87504-2088

☐ AMENDED REPORT

WELL LOCATION AND ACREAGE DEDICATION PLAT

API Number	Pool Code	Pool Name
	23000	EUNICE MONUMENT; GRAYBURG-SAN ANDRES
Property Code	Property Name	Well Number
2616	EMSU	584
OGRID No.	Operator Name	Elevation
4323	CHEVRON U.S.A. INC.	3553

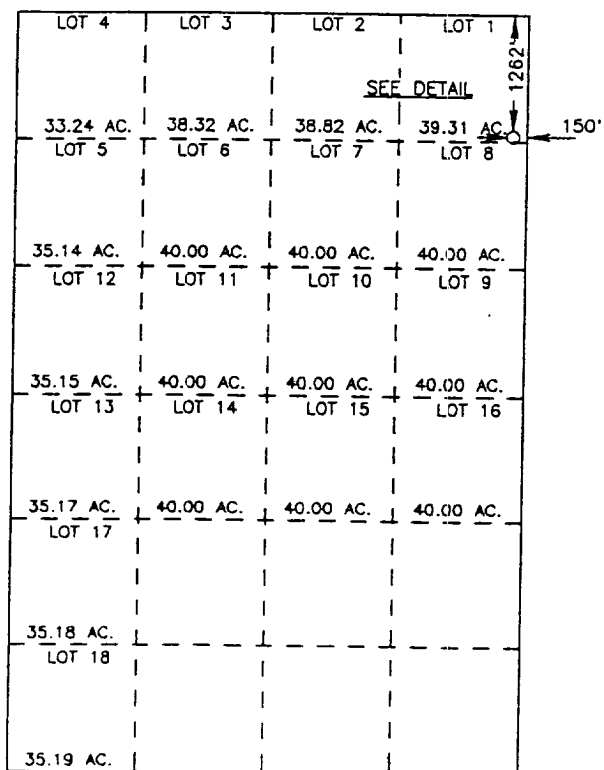
Surface Location

UL or lot No.	Section	Township	Range	Lot Idn	Feet from the	North/South line	Feet from the	East/West line	County
LOT 1	6	21 S	36 E		1262	NORTH	150	EAST	LEA

Bottom Hole Location If Different From Surface

UL or lot No.	Section	Township	Range	Lot Idn	Feet from the	North/South line	Feet from the	East/West line	County
Dedicated Acres	Joint or Infill	Consolidation Code	Order No.						
20									

NO ALLOWABLE WILL BE ASSIGNED TO THIS COMPLETION UNTIL ALL INTERESTS HAVE BEEN CONSOLIDATED  
OR A NON-STANDARD UNIT HAS BEEN APPROVED BY THE DIVISION



DETAIL

3551.2' - 3550.1'

3554.4' - 3555.4'

OPERATOR CERTIFICATION

I hereby certify the the information  
contained herein is true and complete to the  
best of my knowledge and belief.

*J. K. Ripley*  
Signature

J. K. Ripley

Printed Name

T.A.

Title

9/4/97

Date

SURVEYOR CERTIFICATION

I hereby certify that the well location shown  
on this plat was plotted from field notes of  
actual surveys made by me or under my  
supervision, and that the same is true and  
correct to the best of my belief.

JULY 15, 1997

Date Surveyed DMCC

Signature & Seal of  
Professional Surveyor  
NEW MEXICO  
*Raymond E. Eidson* 325-97  
97-11-1178

Certificate No. JOHN W. WEST 676  
RONALD E. EIDSON 3239  
GAR EIDSON 12641