

DISTRICT I
P.O. Box 1993, Hobbs, NM 88241-1993

DISTRICT II
P.O. Drawer 80, Artesia, NM 88211-0718

DISTRICT III
1000 Rio Brazos Rd., Artec, NM 87410

DISTRICT IV
P.O. Box 2088, Santa Fe, NM 87504-2088

State of New Mexico
Energy, Minerals and Natural Resources Department

Form C-102
Revised February 10, 1994
Submit to Appropriate District Office
State Lease - 4 Copies
Fee Lease - 3 Copies

OIL CONSERVATION DIVISION

P.O. Box 2088
Santa Fe, New Mexico 87504-2088

☐ AMENDED REPORT

WELL LOCATION AND ACREAGE DEDICATION PLAT

API Number 30-025-34212	Pool Code 23000	Pool Name EUNICE MONUMENT; GRAYBURG-SAN ANDRES
Property Code 2616	Property Name EMSU	Well Number 640
OGRID No. 4323	Operator Name CHEVRON U.S.A. PRODUCTION COMPANY	Elevation 3571

Surface Location

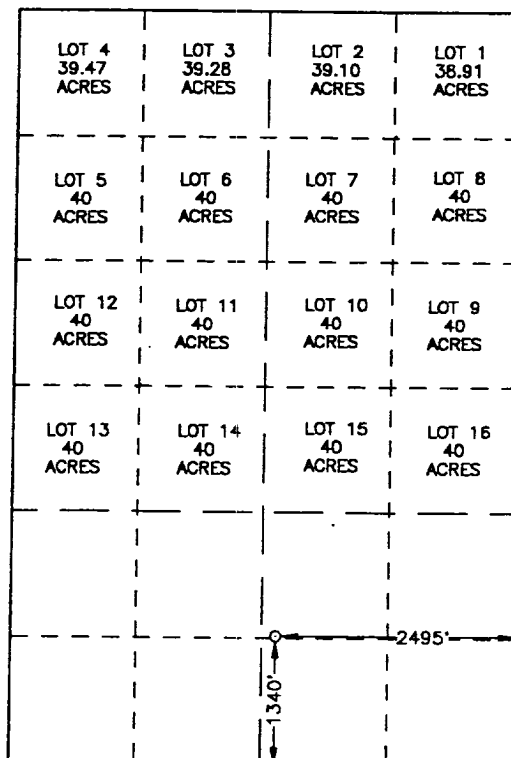
UL or lot No.	Section	Township	Range	Lot Idn	Feet from the	North/South line	Feet from the	East/West line	County
J	5	21 S	36 E		1340	SOUTH	2495	EAST	LEA

Bottom Hole Location If Different From Surface

UL or lot No.	Section	Township	Range	Lot Idn	Feet from the	North/South line	Feet from the	East/West line	County

Dedicated Acres 20 AC	Joint or Infill	Consolidation Code	Order No.
---------------------------------	-----------------	--------------------	-----------

NO ALLOWABLE WILL BE ASSIGNED TO THIS COMPLETION UNTIL ALL INTERESTS HAVE BEEN CONSOLIDATED
OR A NON-STANDARD UNIT HAS BEEN APPROVED BY THE DIVISION



SCALE: 1"=2000'

OPERATOR CERTIFICATION

I hereby certify the the information
contained herein is true and complete to the
best of my knowledge and belief.

J. K. Ripley
Signature

J. K. Ripley
Printed Name
T.A.

Title
11/24/97

Date

SURVEYOR CERTIFICATION

I hereby certify that the well location shown
on this plat was plotted from field notes of
actual surveys made by me or under my
supervision, and that the same is true and
correct to the best of my belief.

JULY 29, 1997

Date Surveyed JLP

Signature & Seal of
Professional Surveyor

Ronald E. Edson
RONALD E. EDSON
7-30-97

W.D. Num. 97-1321174

Certificate No. JOHN WEST, 676
RONALD E. EDSON, 3238