

DISTRICT I
P.O. Box 1980, Hobbs, NM 88241-1980

State of New Mexico
Energy, Minerals and Natural Resources Department

Form C-102
Revised February 10, 1994
Submit to Appropriate District Office
State Lease - 4 Copies
Fee Lease - 3 Copies

DISTRICT II
P.O. Drawer DD, Artesia, NM 88211-0719

DISTRICT III
1000 Rio Brazos Rd., Artec, NM 87410

DISTRICT IV
P.O. Box 2086, Santa Fe, NM 87504-2086

OIL CONSERVATION DIVISION

P.O. Box 2088
Santa Fe, New Mexico 87504-2088

☐ AMENDED REPORT

WELL LOCATION AND ACREAGE DEDICATION PLAT

| | | |
|-----------------------------------|--|---|
| API Number 30-025-34214 | Pool Code 23000 | Pool Name EUNICE MONUMENT; GRAYBURG-SAN ANDRES |
| Property Code 2616 | Property Name EMSU | Well Number 670 |
| OGRID No. 4323 | Operator Name CHEVRON U.S.A. PRODUCTION COMPANY | Elevation 3579 |

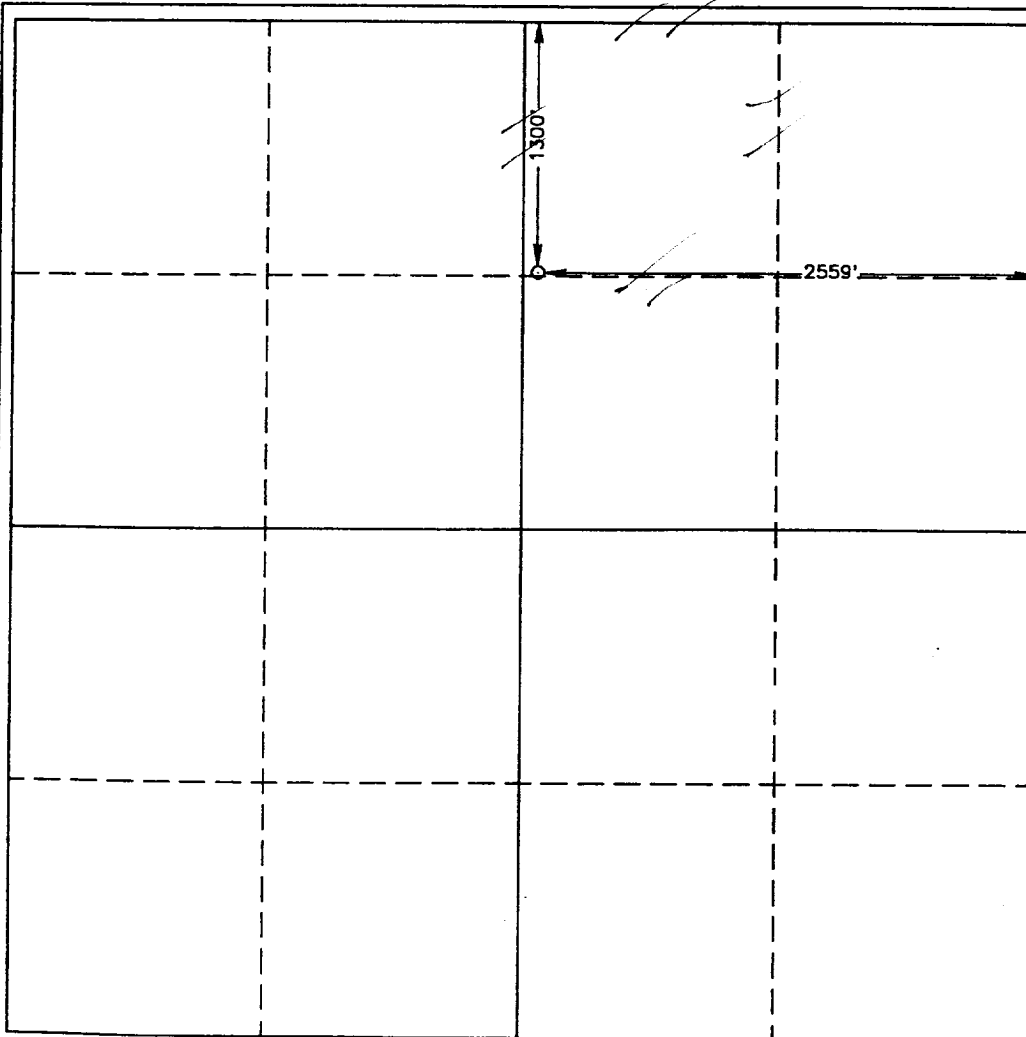
Surface Location

| | | | | | | | | | |
|--------------------|---------------|------------------|---------------|---------|-----------------------|---------------------------|-----------------------|------------------------|---------------|
| UL or lot No. B | Section 10 | Township 21 S | Range 36 E | Lot Idn | Feet from the 1300 | North/South line NORTH | Feet from the 2559 | East/West line EAST | County LEA |
|--------------------|---------------|------------------|---------------|---------|-----------------------|---------------------------|-----------------------|------------------------|---------------|

Bottom Hole Location If Different From Surface

| | | | | | | | | | |
|--------------------------|-----------------|--------------------|-----------|---------|---------------|------------------|---------------|----------------|--------|
| UL or lot No. | Section | Township | Range | Lot Idn | Feet from the | North/South line | Feet from the | East/West line | County |
| Dedicated Acres 20 40 | Joint or Infill | Consolidation Code | Order No. | | | | | | |

NO ALLOWABLE WILL BE ASSIGNED TO THIS COMPLETION UNTIL ALL INTERESTS HAVE BEEN CONSOLIDATED
OR A NON-STANDARD UNIT HAS BEEN APPROVED BY THE DIVISION



OPERATOR CERTIFICATION

I hereby certify the the information
contained herein is true and complete to the
best of my knowledge and belief.

J. K. Ripley
Signature

J. K. Ripley

Printed Name

T.A.

Title

11/24/97

Date

SURVEYOR CERTIFICATION

I hereby certify that the well location shown
on this plat was plotted from field notes of
actual surveys made by me or under my
supervision, and that the same is true and
correct to the best of my belief.

JULY 29, 1997

Date Surveyed

JLP

Signature & Seal of
Professional Surveyor

Ronald J. Eidson
RONALD J. EIDSON
W.O. Num. 97-11-1178

Certificate No. JOHN W. WEST, 676
RONALD J. EIDSON, 3239
SARAH G. EIDSON, 12641