

## APPLICATION FOR P

1a. TYPE OF WORK

DRILL ☒

b. TYPE OF WELL

OIL WELL ☒GAS WELL ☐

OTHER

SINGLE ZONE ☒MULTIPLE ZONE ☐

2. NAME OF OPERATOR

Conoco Inc.

3. ADDRESS AND TELEPHONE NO

10 Desta Dr. Ste 430E, Midland, Tx. 79705-4500

4. LOCATION OF WELL (Report location clearly and in accordance with any State requirements \*)

At surface

990' FSL &amp; 660' FEL

At proposed prod. zone

990' FSL &amp; 660' FEL

Unit X

14. DISTANCE IN MILES AND DIRECTION FROM NEAREST TOWN OR POST OFFICE\*

12 COUNTY OR PARISH  
Lea13. STATE  
NM

5. DISTANCE FROM PROPOSED\*

LOCATION TO NEAREST  
PROPERTY OR LEASE LINE, FT.  
(Also to nearest drlg. unit line, if Any)

16 NO OF ACRES IN LEASE

17. NO. OF ACRES ASSIGNED  
TO THIS WELL

40

8. DISTANCE FROM PROPOSED LOCATION\*  
TO NEAREST WELL, DRILLING, COMPLETED,  
OR APPLIED FOR, ON THIS LEASE, FT.

19. PROPOSED DEPTH

7050'

20. ROTARY OR CABLE TOOLS

Rotary

21. ELEVATIONS (Show whether DF, RT, GR, etc.)

3588' GR

22. APPROX. DATE WORK WILL START\*

1-1-98

23

## PROPOSED CASING AND CEMENTING PROGRAM

| SIZE OF HOLE | GRADE, SIZE OF CASING | WEIGHT PER FOOT | SETTING DEPTH | QUANTITY OF CEMENT   |
|--------------|-----------------------|-----------------|---------------|----------------------|
| 12-1/4"      | M-50, 8-5/8"          | 23#             | 1250'         | WITNESS 6 sxs, circ. |
| 7-7/8"       | K-55, 5-1/2"          | 17#             | 7050'         | 1575 sxs, circ.      |
|              |                       |                 |               |                      |

It is proposed to drill a vertical wellbore as a Drinkard producer according to the plan submitted in the following attachments:

## CAPTAN CONTROLLED WATER BASIN

1. Well Location and Acreage Dedication Plat (C-102)
2. Proposed Well Plan Outline
3. Surface Use Plan
4. Exhibit A: Vicinity Map
5. Exhibit B: Location Verification Map
6. Exhibit C.1-C.2: Flow Line and Electric Line Plats
7. Exhibit D: Trailer Mounted Rig Layout Drawing
8. BOP & Choke Manifold Specifications
9. H2S Drilling Operations Plan
10. Surface owner communications

APPROVAL SUBJECT TO  
GENERAL REQUIREMENTS AND  
SPECIAL STIPULATIONS  
12/11/97

The undersigned accepts all applicable terms, conditions, stipulations and restrictions concerning operations conducted on the leased land or portion thereof, as described above and as covered by BLM Bond File No. ES-0085.

IN ABOVE SPACE DESCRIBE PROPOSED PROGRAM: If proposal is to deepen give data on present productive zone and proposed new productive zone. If proposal is to drill or deepen directionally, give pertinent data on subsurface locations and measured and true vertical depths. Give blowout preventer program, if any.

24. SIGNED Mike L. Mankin TITLE Right of Way Agent DATE 12/11/97

(This space for Federal or State office use)

PERMIT NO.

APPROVAL DATE

Application approval does not warrant or certify that the applicant holds legal or equitable title to those rights in the subject lease which would entitle the applicant to conduct operations thereon.

CONDITIONS OF APPROVAL, IF ANY:

APPROVED BY

(ORIG. SGD.) ALEXIS C. SWOBODA

TITLE

Acting ADM. MINERALS

DATE

1-13-98

\*See Instructions On Reverse Side

Title 18 U.S.C. Section 1001, makes it a crime for any person knowingly and willfully to make to any department or agency of the United States any false, fictitious or fraudulent statements or representations as to any matter within its jurisdiction.

RECEIVED  
FRI DEC 15 4 11:45  
FEDERAL BUREAU OF INVESTIGATION  
U.S. DEPARTMENT OF JUSTICE



District I  
PO Box 1980, Hobbs, NM 88241-1980

District II  
PO Drawer DD, Artesia, NM 88211-0719

District III  
1000 Rio Brazos Rd., Aztec, NM 87410

District IV  
PO Box 2088, Santa Fe, NM 87504-2088

State of New Mexico  
Energy, Minerals & Natural Resources Department

Form C-102  
Revised February 21, 1994

Instructions on back

Submit to Appropriate District Office

State Lease - 4 Copies

Free Lease - 3 Copies

OIL CONSERVATION DIVISION  
PO Box 2088  
Santa Fe, NM 87504-2088

☐ AMENDED REPORT

# WELL LOCATION AND ACREAGE DEDICATION PLAT

|   |   |  |
|---|---|--|
| <sup>1</sup> API Number<br>30-D25-34270 | <sup>2</sup> Pool Code<br>29760           | <sup>3</sup> Pool Name<br>Hardy Tubb/Drinkard Pool |
| <sup>4</sup> Property Code<br>003061    | <sup>5</sup> Property Name<br>MEYER B-4   | <sup>6</sup> Well Number<br>32                     |
| <sup>7</sup> GRID No.<br>005073         | <sup>8</sup> Operator Name<br>CONOCO INC. | <sup>9</sup> Elevation<br>3588'                    |

<sup>10</sup> Surface Location

|                      |              |                  |               |         |               |                  |               |                |        |
|----------------------|--------------|------------------|---------------|---------|---------------|------------------|---------------|----------------|--------|
| UL or lot no.<br>X-P | Section<br>4 | Township<br>21-S | Range<br>36-E | Lot Idn | Feet from the | North/South line | Feet from the | East/West line | County |
|                      |              |                  |               |         | 990           | SOUTH            | 660           | EAST           | LEA    |

## 11 Bottom Hole Location If Different From Surface

| UL or lot no. | Section | Township | Range | Lot Idn | Feet from the | North/South line | Feet from the | East/West line | County |
|---------------|---------|----------|-------|---------|---------------|------------------|---------------|----------------|--------|
|---------------|---------|----------|-------|---------|---------------|------------------|---------------|----------------|--------|

|                               |                               |                                  |                         |
|-------------------------------|-------------------------------|----------------------------------|-------------------------|
| <sup>12</sup> Dedicated Acres | <sup>13</sup> Joint or Infill | <sup>14</sup> Consolidation Code | <sup>15</sup> Order No. |
| 40                            |                               |                                  |                         |

NO ALLOWABLE WILL BE ASSIGNED TO THIS COMPLETION UNTIL ALL INTERESTS HAVE BEEN CONSOLIDATED  
OR A NON-STANDARD UNIT HAS BEEN APPROVED BY THE DIVISION

[illegible]

# PROPOSED WELL PLAN OUTLINE

WELL NAME  
LOCATION

Meyer B-4 No. 32  
990' FSL 660' FEL Sec 4 T21S-R36E

Ground Level  
Kelly Bushing

| Depth<br>MD | FORMATION<br>TOPS   | DRILLING<br>PROBLEMS  | TYPE OF<br>FORMATION<br>EVALUATION  | HOLE<br>SIZE | CASING<br>PROGRAM                 | FRAC<br>GRAD | FORM.<br>PRES.<br>GRAD                         | Mud<br>Weight<br>& Type | Days |
|-------------|---------------------|---|-------------------------------------|--------------|-----------------------------------|--------------|--|-------------------------|------|
| 0           |                     | Possible Hole Enlargement<br>& Sloughing                                      |                                     | 12-1/4"      |                                   |              | Normal   | 8.4 - 9.5<br>Fresh      |      |
| 1000        |                     |   |                                     |              | 8-5/8", 23#, M-50<br>ST&C @ 1250' |              |  |                         |      |
|             | Rustler 1270'       | Washouts in Salt Section  |                                     |              | 515 sx, circ.                     |              |  | 10<br>Brine             | 3    |
| 2000        |                     |   |                                     |              |                                   |              |  |                         |      |
|             | Base Salt<br>2530'  |   | Muddloggers on at 2600'             |              | Top 2nd Stage<br>Tail at 2600'    |              |  |                         |      |
|             | Yates 2665'         | Possible Losses   |                                     |              |                                   |              |  |                         |      |
| 3000        | 7 Rivers 2915'      |   |                                     | 7-7/8"       |                                   |              |  |                         |      |
|             | Queen 3340'         |   |                                     |              |                                   |              |  |                         |      |
|             | Grayburg 3615'      | Chevron's Eunice<br>Monument South Waterflood<br>injects in the Grayburg      | H2S Monitor on at 3600'             |              |                                   |              | Possible over<br>pressure due<br>to waterflood |                         |      |
| 4000        | San Andres<br>3885' | Possible over pressure may<br>require stripping through the<br>rotating head. |                                     |              | DV Tool @ 3900'                   |              |  |                         | 7    |
|             |                     | Lost Returns in San Andres  |                                     |              |                                   |              |  |                         |      |
| 5000        |                     |   |                                     |              |                                   |              |  |                         |      |
|             | Glorietta 5260'     |   |                                     |              |                                   |              |  |                         |      |
|             |                     |   |                                     |              | Top 1st Stage<br>Tail at 5200'    |              |  |                         |      |
| 6000        | Blinberry 5875'     |   |                                     |              |                                   |              |  |                         |      |
|             |                     |   |                                     |              |                                   |              |  |                         |      |
|             | Tubb 6625'          |   |                                     |              |                                   |              |  |                         |      |
|             |                     |   | GR/CNL/CAL<br>2600'- Surface Casing |              |                                   |              |  | 10 ppg<br>Starch Gel    |      |
| 7000        | Drinkard 6815'      |   | DLL/MLL/FDC/GR/CNL/PE/CAL           |              | 5-1/2", 17#, K-55<br>LT&C @ 7050' |              |  |                         | 1 /  |
|             | TD @ 7050'          |   | TD-2600'                            |              | 1575 sx, circ.                    |              |  |                         |      |

DATE

02-Dec-97

APPROVED

*Jim Tietema*  
Jim Tietema, Drilling Engineer

*Trent Boneau*  
Trent Boneau, Reservoir Engineer

Well Name : Meyer B-4 No. 32

Location : 990' FSL & 660' FEL, Sec 4-T21S-R36E

**Casing Program**

Surface : 8-5/8" casing in 12-1/4" Hole at 1250 ft.

Production : 5-1/2" casing in 7-7/8" Hole at 7,050 ft.

**Cementing Program :**

**Surface**

Lead 315 sacks Class C Mixed at 12.7 ppg  
Additives 35:65:6 (Poz:Cem:Gel) + 2% CACL2  
+ 0.25 pps Cello-Flake

Tail 200 sacks Class C Mixed at 14.8 ppg  
Additives 2% A-7P

**Production**

DV Tool 3,900'

**(1st Stage)**

Lead 150 sacks Class C Mixed at 12 ppg  
Additives 16.0% Gel + 0.40% CD-32 + 0.20% SM + 139.71% Fresh Water

Tail 415 sacks Class C Mixed at 14.8 ppg  
Additives 1.1% FL-62 + 1.0% BA-58 + 0.3% CD-32 + 0.2 SM  
+ 3.0% Salt + 56.57% Fresh Water  
Free Water 0 % Fluid Loss 40 cc/30 min.

**(2nd Stage)**

Lead 475 sacks Class C Mixed at 12.0 ppg  
Additives 16.0% Gel + 0.40% CD-32 + 0.20% SM + 139.71% Fresh Water

Tail 535 sacks Class C Mixed at 14.8 ppg  
Additives 1.1% FL-62 + 1.0% BA-58 + 0.3% CD-32 + 0.2 SM  
+ 5.0% Salt + 57.2% Fresh Water

**SURFACE USE PLAN**  
**Conoco Inc.**

**Meyer B-4 No. 32**

The following is required information concerning the possible effect which the drilling of this well may have on the environment, existing road sites, and surrounding acreage. A copy will be posted on the derrick floor so all contractors and sub-contractors will be aware of all items of this plan.

1. Existing Roads

- A. The proposed well site is 990' FSL & 660' FEL, Sec. 4, T-21S, R-36E, Lea County, New Mexico.
- B. Exhibit "A" is a Vicinity road and well map. Directions to the location are as follows:

South of Monument, NM on Hwy 8 to intersection of Hwy 175, then right 150', then left 3/10 mile to location.
- C. No improvement or maintenance is anticipated for the existing roads.

2. Planned Access Roads

- A. No new access road will be required.
- B. No turnout will be required.
- C. No culverts will be required.
- D. No gates, cattleguards, or fences will be required.

3. Topographic Map and Well Location

A 7.5" quadrangle topo map of the area is included as Exhibit "B".

4. Additional Right-of-Ways

EXHIBITS C.1 - C.2 are survey plats for the flowline and power line right-of ways.

5. Water Supply

Fresh water will be secured from the City of Eunice and brine from a public water station in Eunice. All water will be trucked and will follow the above described route to location.

6. Source of Construction Materials

Caliche will come from the pit located in the NW/4 SE/4 Sec. 4, T-21S, R-36E.

7. Methods of Handling Waste Disposal

Waste Disposal: Well cuttings will be disposed in reserve pit. Barrel trash containers to be in accessible locations within drill site area during drilling and completion procedures. All detrimental waste will be hauled away. See Exhibit "D" (rig layout) for location of pits. If well is productive, maintenance waste will be placed in special trash cans and hauled away periodically. Any produced water will be collected in tanks until hauled to an approved disposal system, or separate disposal applications will be submitted to survey for appropriate approval.

8. Ancillary Facilities

None.

9. Wellsite Layout

See Exhibit "D". The V-door faces East. The reserve pit will be lined with plastic and the pad and pits are staked. All unguarded pits containing liquids will be fenced.

10. Plans for Restoration of Surface

Reserve pits will be rehabilitated once drilling fluids have been allowed to evaporate to the point the pits are dry enough for backfilling and leveling. In the event drilling fluids will not evaporate in a reasonable time period, the fluids will be removed and transported by tank truck to a state approved disposal facility. Backfilling and leveling of the location will be completed within a time period of one year upon cessation of drilling operations.

11. Surface Ownership

Fee. A letter verifying negotiation of damages is attached.

12. Other Information

An archaeological survey will be conducted for these right-of-ways.

13. Operator's Representative and Certification

The person who can be contacted concerning compliance of this Surface Use Plan is:

**Mike L. Mankin**  
**10 Desta Drive Suite 430E**  
**Midland, Texas 79705**  
**(915) 686-5794**

*I hereby certify that I, or persons under my direct supervision, have inspected the proposed drilling site; that I am familiar with the conditions which currently exist; that the statements made in this plan, are, to the best of my knowledge, true and correct; and that the work associated with operations proposed herein will be performed by Conoco Inc. and its contractors and subcontractors in conformity with this plan and the terms and conditions under which it is approved. This statement is subject to the provisions of 18 U.S.C. 1001 for the filing of a false statement.*

Mike L. Mankin

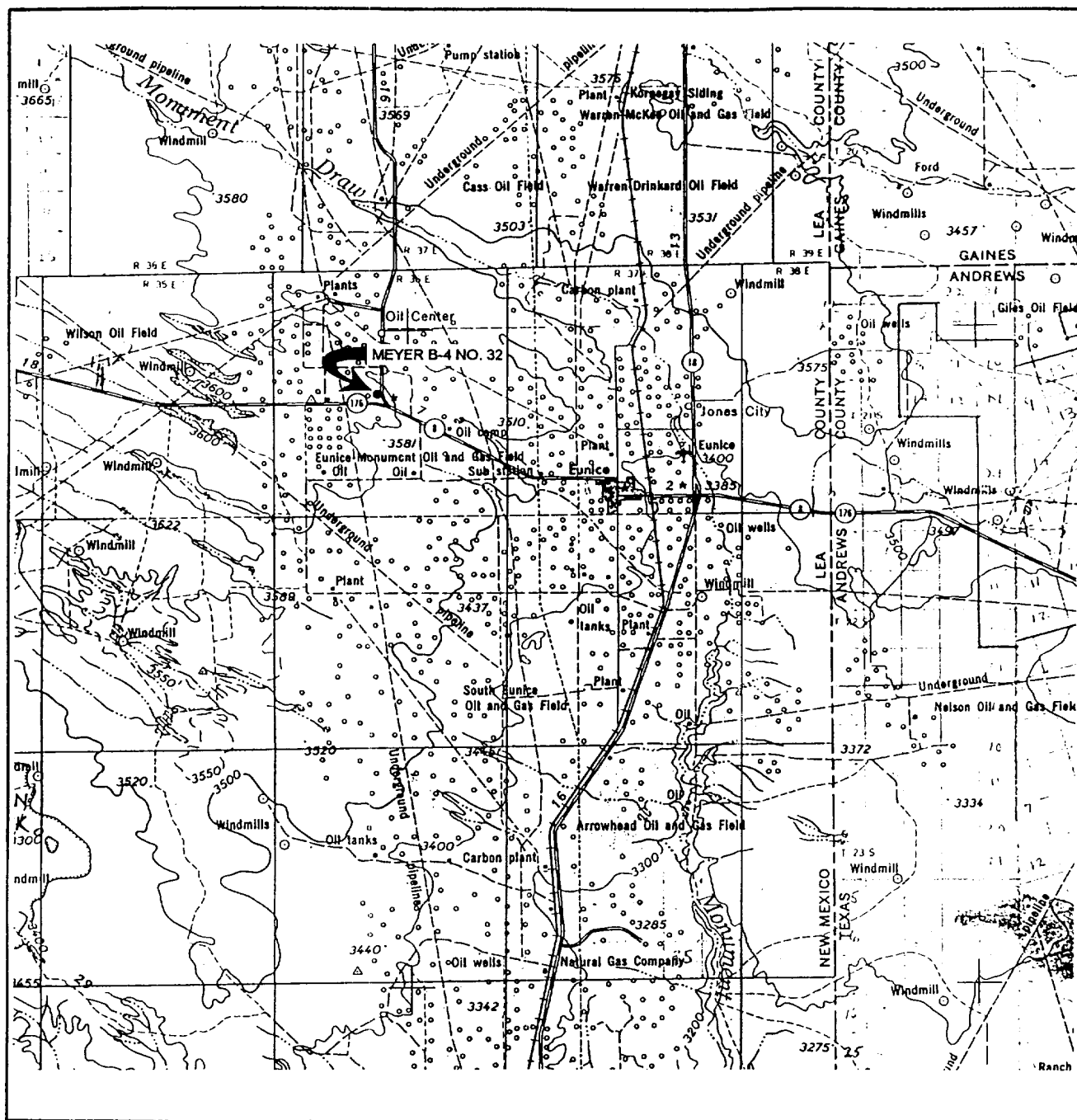
Mike L. Mankin  
Right of Way Agent

12/14/97

Date



## VICINITY MAP

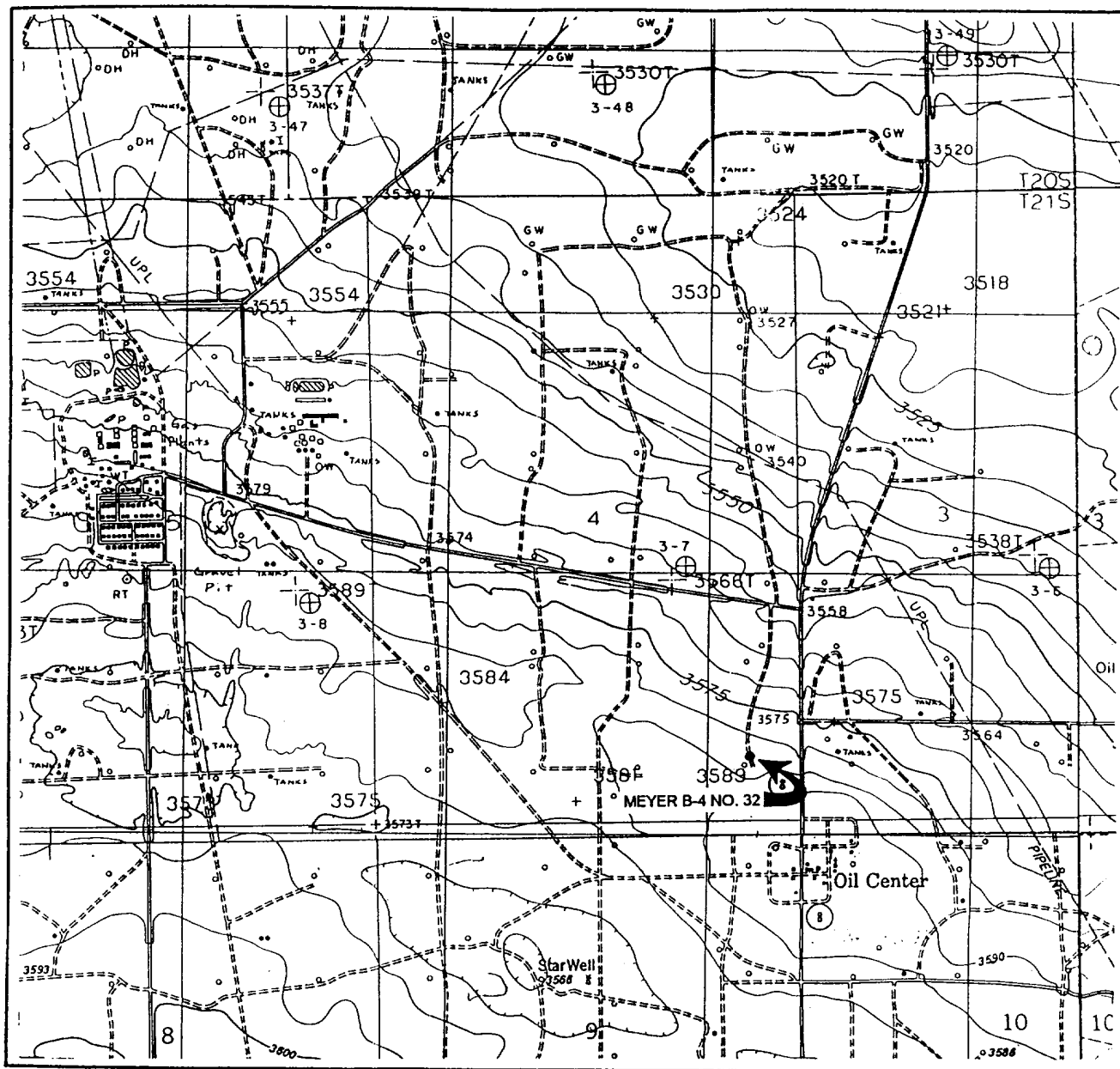


SCALE: 1" = 4 MILES

WTC 45074

SEC. 4 TWP. 21-S RGE. 36-ESURVEY N.M.P.M.COUNTY LEA STATE NMDESCRIPTION 990' FSL & 660' FELELEVATION 3588'OPERATOR CONOCO INC.LEASE MEYER B-4 NO. 32**WEST TEXAS CONSULTANTS, INC.****ENGINEERS-PLANNERS-SURVEYORS****MIDLAND, TEXAS****915-685-3800**

## LOCATION VERIFICATION MAP



SCALE: 1" = 2000'

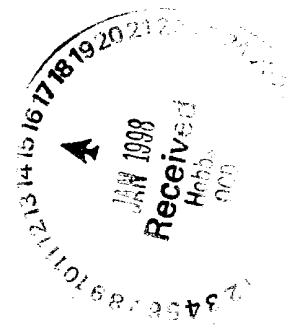
WTC 45074

SEC. 4 TWP. 21-S RGE. 36-ESURVEY N.M.P.MCOUNTY LEA STATE NMDESCRIPTION 990' FSL & 660' FELELEVATION 3588'OPERATOR CONOCO INC.LEASE MEYER B-4 NO. 32USGS TOPO MAP EUNICE, N.M., MONUMENT SOUTH,  
N.M., OIL CENTER, N.M., AND HOBBS SW, N.M.CONTOUR INTERVAL 5'**WEST TEXAS CONSULTANTS, INC.**

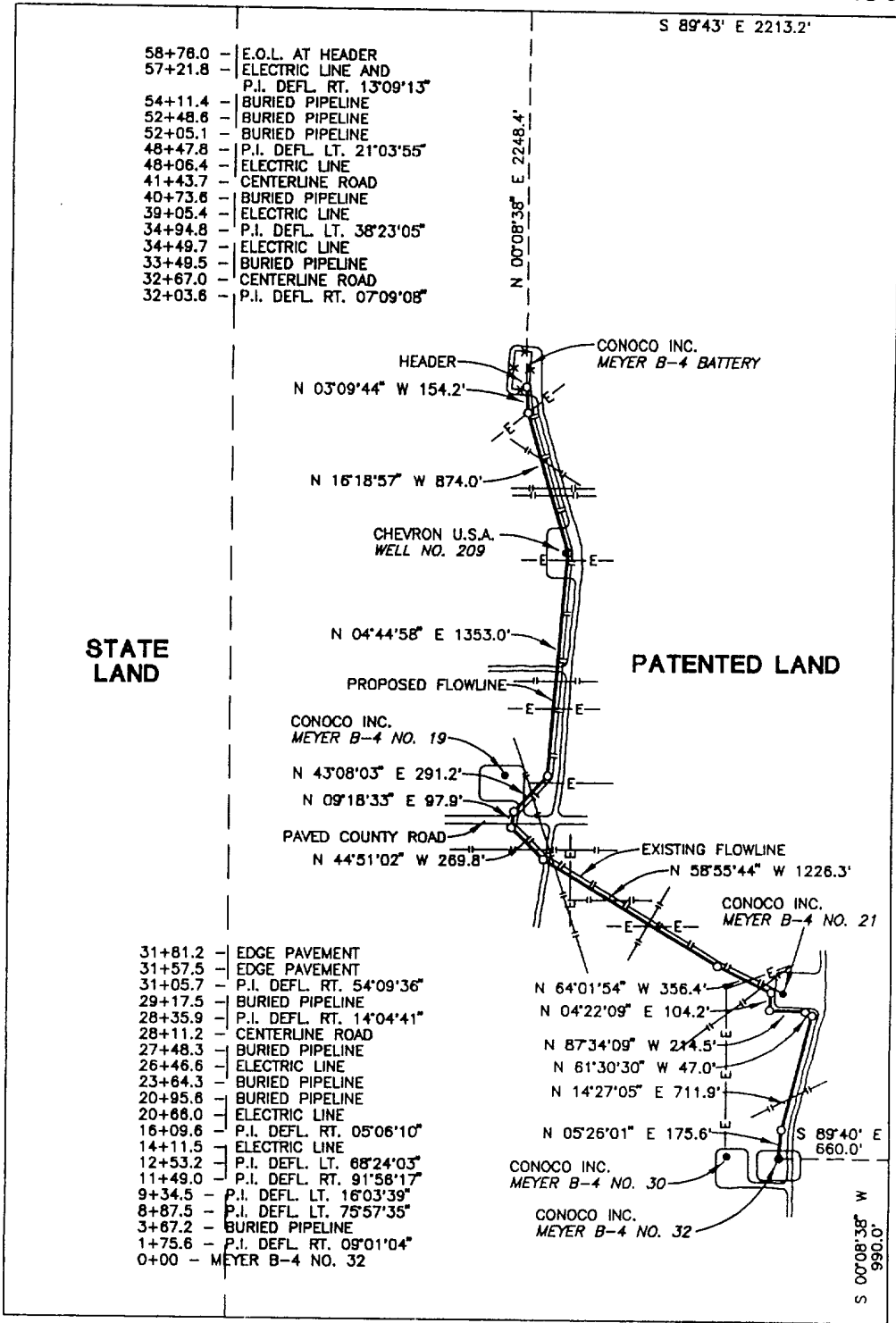
ENGINEERS-PLANNERS-SURVEYORS

MIDLAND, TEXAS

915-685-3800



SECTION 4, TOWNSHIP 21 SOUTH, RANGE 36 EAST, N.M.P.M.  
LEA COUNTY, NEW MEXICO

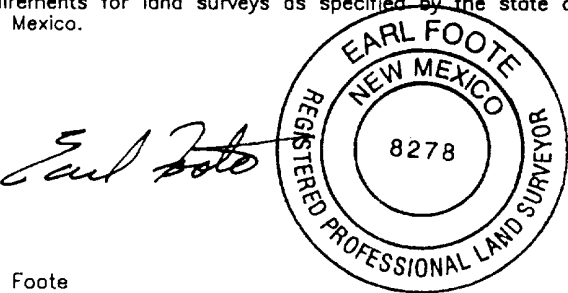


CENTERLINE DESCRIPTION OF A PROPOSED FLOWLINE:

BEGINNING at Conoco Inc. MEYER B-4 Well #32, from which point the southeast corner of Section 4, T-21-S, R-36-E, N.M.P.M., Lea County, New Mexico, bears S 89° 40' E, 660.0 feet and S 00° 08' 38" W, 990.0 feet;

THENCE with the centerline of proposed pipeline as follows: N 05° 26' 01" E, 175.6 feet; N 14° 27' 05" E, 711.9 feet; N 61° 30' 30" W, 47.0 feet; N 87° 34' 09" W, 214.5 feet; N 04° 22' 09" E, 104.2 feet; N 64° 01' 54" W, 356.4 feet; N 58° 55' 44" W, 1226.3 feet; N 44° 51' 02" W, 269.8 feet; N 09° 18' 33" E, 97.9 feet; N 43° 08' 03" E, 291.2 feet; N 04° 44' 58" E, 1353.0 feet; N 16° 18' 57" W, 874.0 feet; and N 03° 09' 44" W, 154.2 feet to a point at Conoco, Inc. MEYER B-4 BATTERY, for the end of this line, from which point the northeast corner of Section 4 bears N 00° 08' 38" E, 2248.4 feet and S 89° 43' E, 2213.2 feet.

I hereby certify that this plat was prepared from an actual survey made on the ground and meets or exceeds all requirements for land surveys as specified by the state of New Mexico.

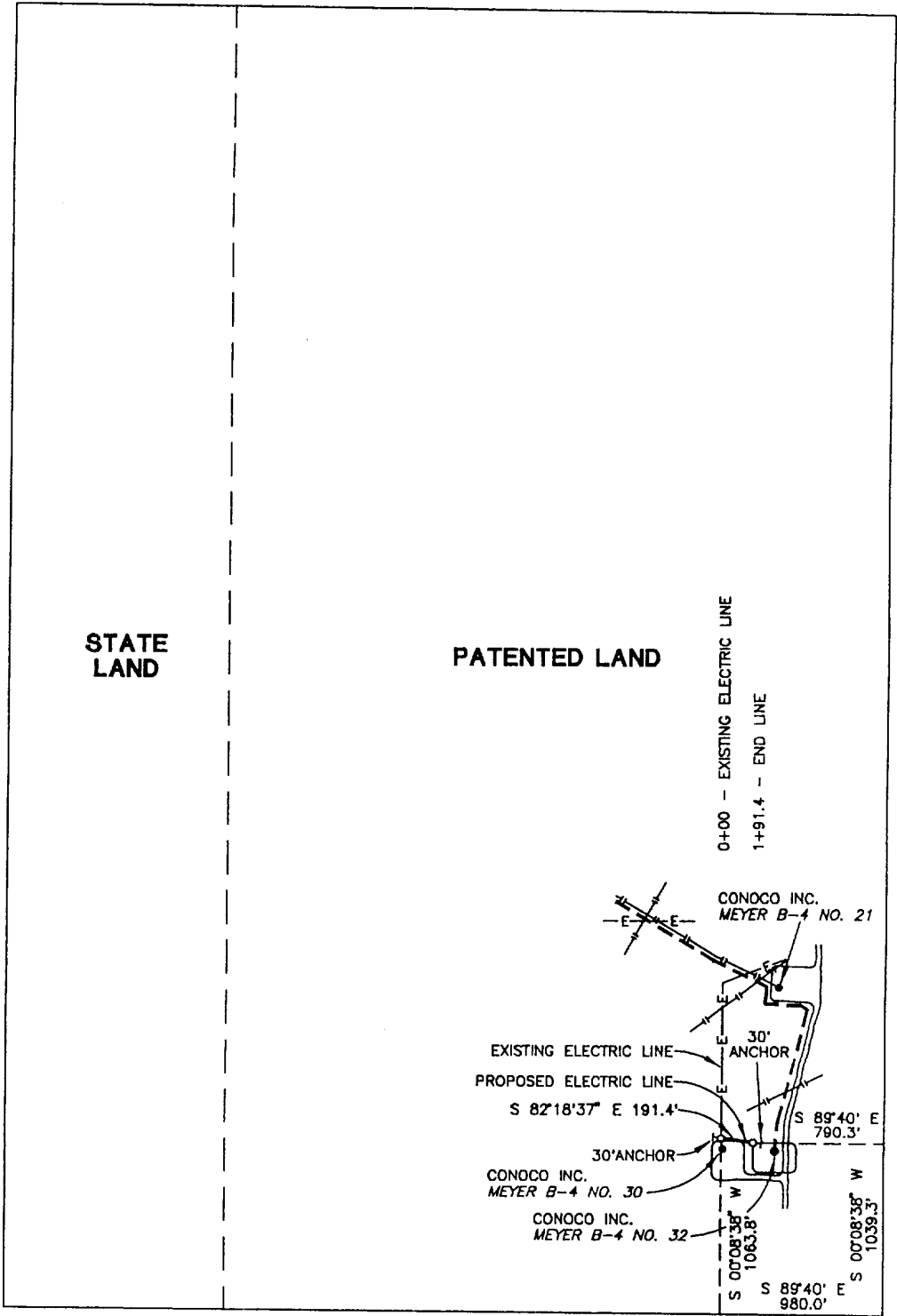


Earl Foote  
Registered Professional Surveyor  
New Mexico Certificate No. 8278

PROPOSED FLOWLINE TO SERVE  
MEYER B-4 WELL #32

| CONOCO INC.   |                |                   |
|---|----------------|-------------------|
| 5876.0 feet of proposed flowline in<br>Section 4, T-21-S, R-36-E, N.M.P.M.,<br>Lea County, New Mexico |                |                   |
| WEST TEXAS CONSULTANTS, INC.<br>ENGINEERS--PLANNERS--SURVEYORS<br>MIDLAND, TEXAS                      |                |                   |
| Survey Date: 12-8-97  | Date: 12-10-97 | Scale: 1" = 1000' |
| WTC No. 45074   | Drawn By: R.S. | Sheet 1 of 1      |

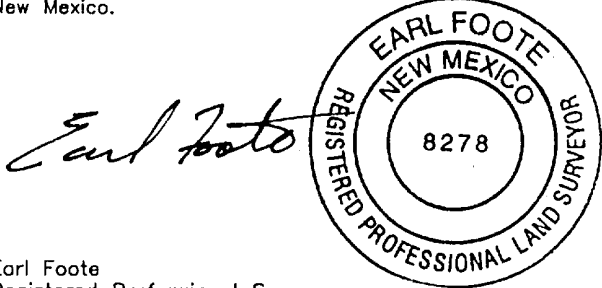
SECTION 4, TOWNSHIP 21 SOUTH, RANGE 36 EAST, N.M.P.M.  
LEA COUNTY, NEW MEXICO



CENTERLINE DESCRIPTION OF A PROPOSED ELECTRIC LINE:

BEGINNING at a point in an existing electric line, from which point the southeast corner of Section 4, T-21-S, R-36-E, N.M.P.M., Lea County, New Mexico, bears S 00° 08' 38" W, 1063.8 feet and S 89° 40' E, 980.0 feet and an anchor easement bears N 82° 18' 37" W, 30.0 feet;  
THENCE S 82° 18' 37" E, with the proposed electric line, 191.4 feet to a point for the end of this line, from which point an anchor easement bears S 82° 18' 37" E, 30.0 feet and the southeast corner of Section 4, bears S 89° 40' E, 790.3 feet and S 00° 08' 38" W, 1039.3 feet.

I hereby certify that this plat was prepared from an actual survey made on the ground and meets or exceeds all requirements for land surveys as specified by the state of New Mexico.



Earl Foote  
Registered Professional Surveyor  
New Mexico Certificate No. 8278

PROPOSED ELECTRIC LINE TO SERVE  
MEYER B-4 WELL #32

| CONOCO INC.   |                |                   |
|---|----------------|-------------------|
| 191.4 feet of proposed electric line in<br>Section 4, T-21-S, R-36-E, N.M.P.M.,<br>Lea County, New Mexico |                |                   |
| WEST TEXAS CONSULTANTS, INC.<br>ENGINEERS-PLANNERS-SURVEYORS MIDLAND, TEXAS                               |                |                   |
| Survey Date: 12-8-97  | Date: 12-10-97 | Scale: 1" = 1000' |
| WTC No. 45074   | Drawn By: R.S. | Sheet 1 of 1      |

## TRAILER - MOUNTED RIG LAYOUT

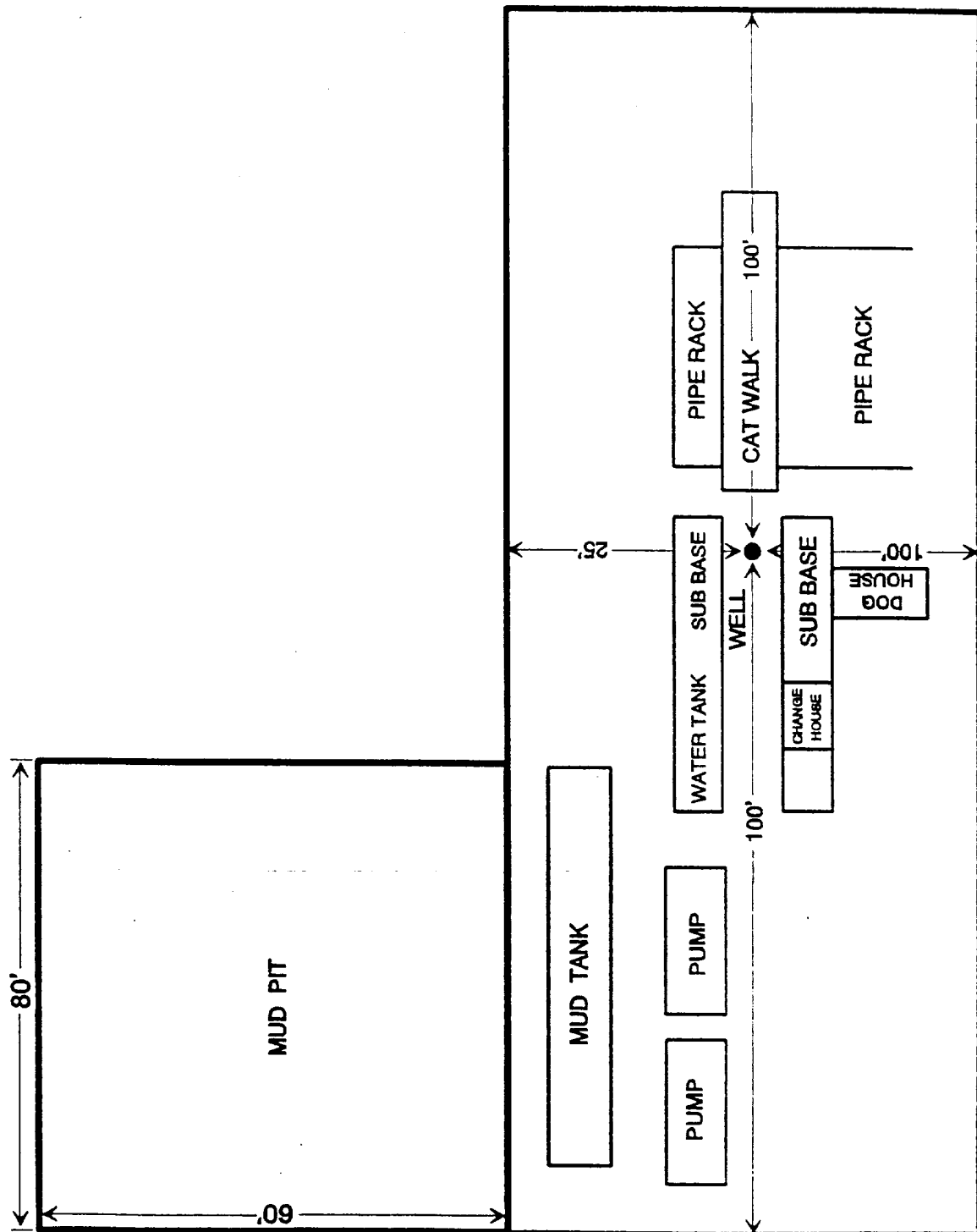
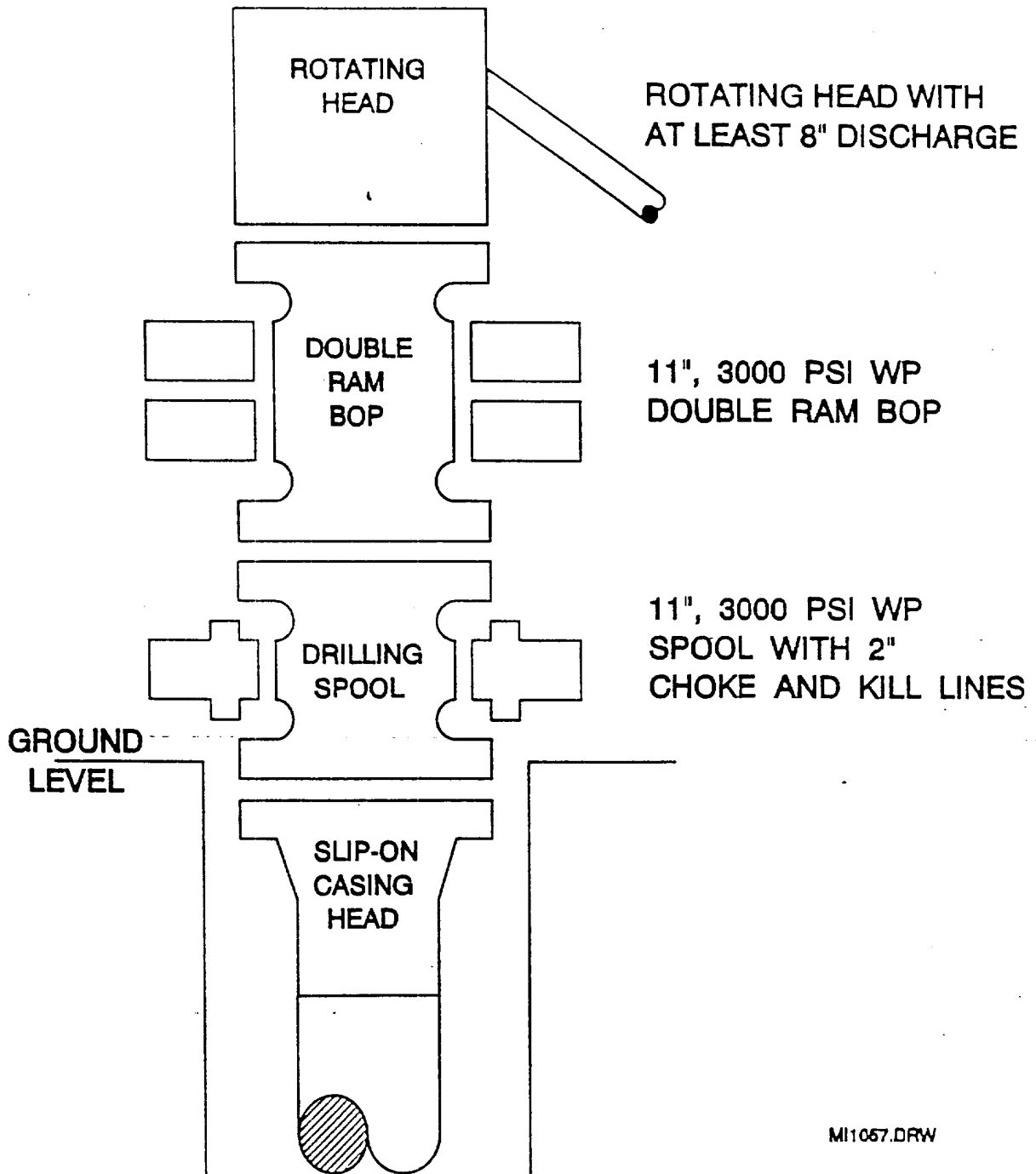


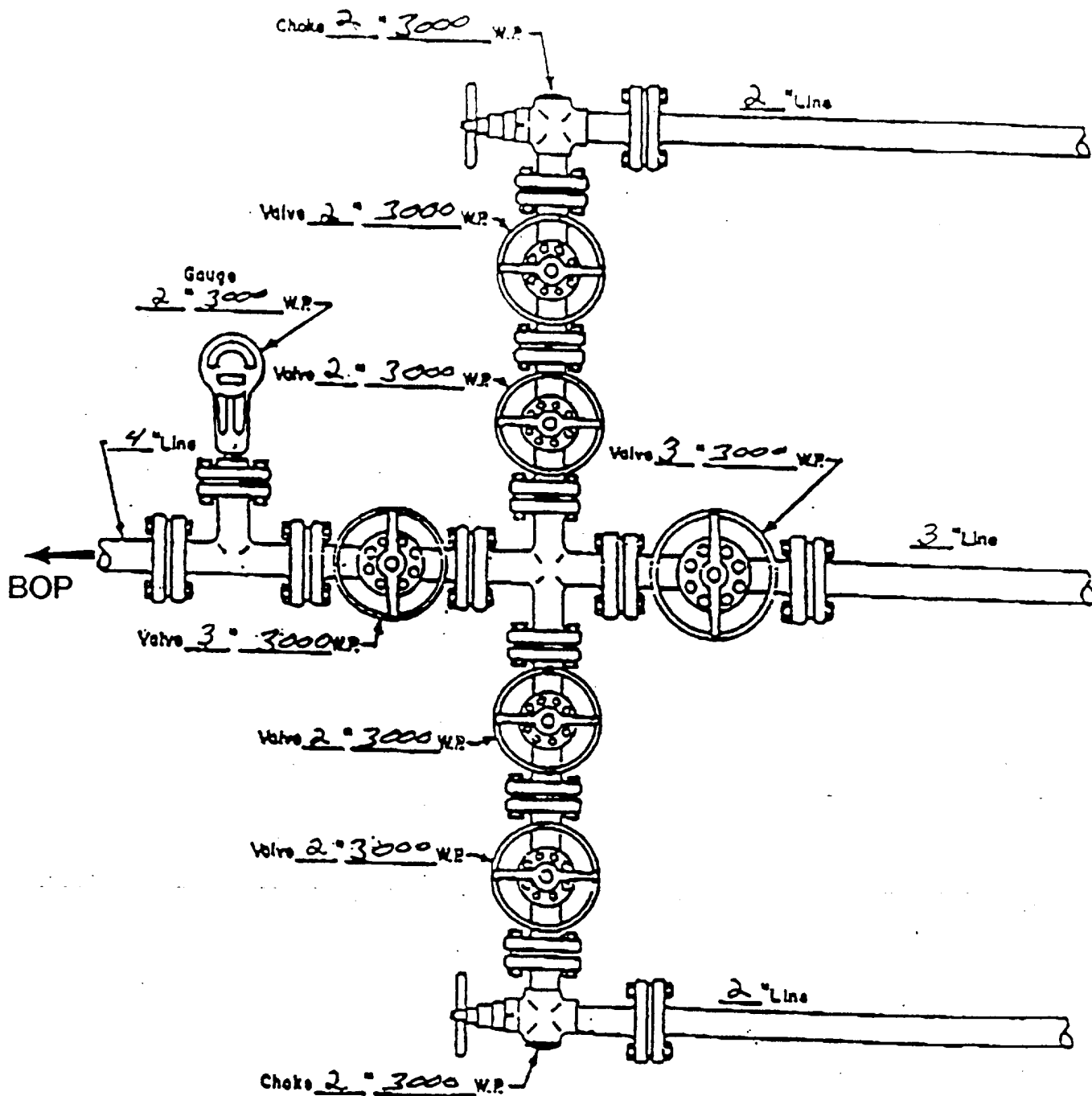
EXHIBIT D

# BOP SPECIFICATIONS



MI1067.DRW

# CHOKE MANIFOLD DIAGRAM



MANIFOLD  
3000 #W.P.

- ☒ Manual
- ☐ Hydraulic



## H2S DRILLING OPERATIONS PLAN

### I. Hydrogen Sulfide Training

All contractors and subcontractors employed by Conoco will receive or have received training from a qualified instructor within the last twelve months in the following areas prior to commencing drilling operations on this well.

1. The hazards and characteristics of hydrogen sulfide (H2S)
2. Safety precautions
3. Operations of safety equipment and life support systems.

In addition, contractor supervisory personnel will be trained or prepared in the following areas:

1. The effect of H2S on metal components in the system, especially high tensile strength tubulars are to be used.
2. Corrective action and shut-down procedures when drilling or reworking a well, blowout prevention and well control procedures, if the nature of work performed involves these items.
3. The contents and requirements of the contingency plan when such plan is required.

All personnel will be required to carry documentation of the above training on their person.

### II. H2S EQUIPMENT AND SYSTEMS

#### 1. Safety Equipment

The following safety equipment will be on location:

- A. Wind direction indicators as seen in attached diagram.
- B. Automatic H2S detection alarm equipment (both audio and visual).
- C. Clearly visible warning signs as seen on the attached diagram. Signs will use the words "POISON GAS" and "CAUTION" with a strong color contrast.
- D. Protective breathing equipment will be located in the dog house and at briefing areas as seen in the attached diagram.

## **2. Well Control Systems**

### **A. Blowout Prevention Equipment**

Equipment includes but is not limited to:

- a. pipe rams to accomodate all pipe sizes
- b. blind rams
- c. choke manifold
- d. closing unit
- e. flare line and means of ignition

### **B. Communication**

The rig contractor will be required to have two-way communication capability. Conoco will have either land-line or mobile telephone capabilities.

### **C. Mud Program**

The mud program has been designed to minimize the volume of H<sub>2</sub>S circulated to surface. Proper mud weight, safe drilling practices, and the use of H<sub>2</sub>S scavengers when appropriate will minimize hazards when penetrating H<sub>2</sub>S bearing zones.

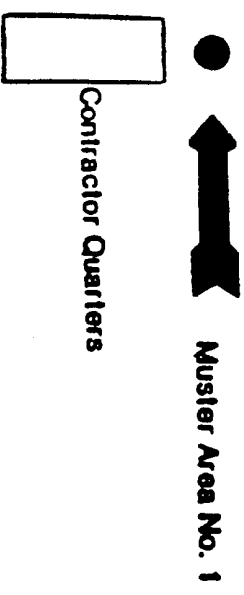
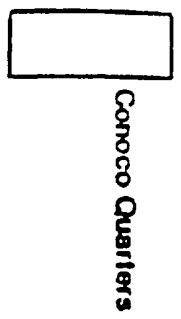
### **D. Drill Stem Tests**

There are no drill stem tests proposed for this well.

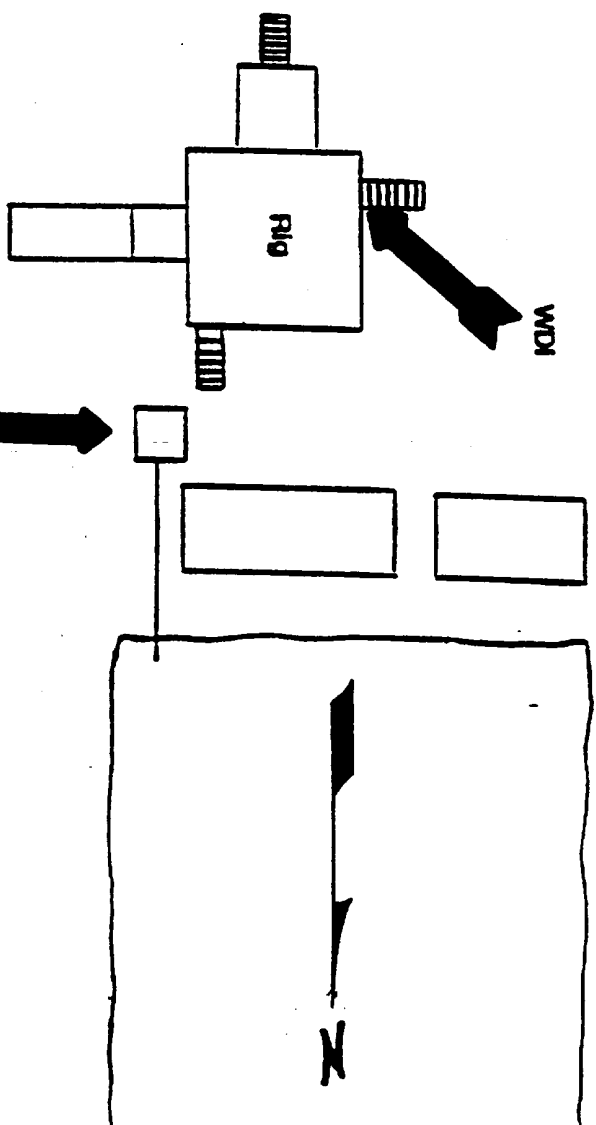
## **III. WELL SITE DIAGRAM**

A complete well site diagram including the following information is attached:

- 1. Rig orientation
- 2. Terrain
- 3. Briefing areas
- 4. Ingress and egress
- 5. Pits and flare lines
- 6. Caution and danger signs
- 7. Wind indicators and prevailing wind direction



Terrain is flat, and covered with native grasses  
Two of the three WDI (wind direction indicator) locations will be utilized  
(Prevailing winds are SW to NE)



Muster Area No. 2  
WDI





Mike L. Mankin  
Right of Way Agent  
Right of Way and Claims

Conoco Inc.  
10 Desta Drive, Suite 430E  
Midland, Texas 79705  
(915) 686-5794

December 11, 1997

Bureau of Land Management  
P. O. Box 1778  
620 E. Greene Street  
Carlsbad, New Mexico 88221-1778

Attn: Mr. Barry Hunt, Surface Protection Specialist

Re: Settlement for Well Location and Appurtenances  
**Meyer B4 Well # 32**  
Section 4, T21S, R36E  
Lea County, New Mexico

Dear Mr. Hunt:

By this letter Conoco Inc. has made settlement with surface owner for the construction of the above referenced location and appurtenances.

If you have any questions, please contact me at 915-686-5794.

Sincerely,

A handwritten signature in cursive script, appearing to read 'Mike L. Mankin', written over a horizontal line.

Mike L. Mankin

cc: File

86/5/7

