

DISTRICT I  
P.O. Box 1980, Hobbs, NM 88241-1980

State of New Mexico  
Energy, Minerals and Natural Resources Department

Form C-102  
Revised February 10, 1994  
Submit to Appropriate District Office  
State Lease - 4 Copies  
Fee Lease - 3 Copies

DISTRICT II  
P.O. Box 2088, Artesia, NM 88211-0719

OIL CONSERVATION DIVISION

P.O. Box 2088  
Santa Fe, New Mexico 87504-2088

☐ AMENDED REPORT

DISTRICT III  
1000 Rio Brazos Rd., Artec, NM 87410

DISTRICT IV  
P.O. Box 2088, Santa Fe, NM 87504-2088

WELL LOCATION AND ACREAGE DEDICATION PLAT

API Number 30-025-34271	Pool Code 82240	Pool Name Osudo; Morrow, West
Property Code 22256	Property Name STATE "R"	Well Number 1
OGRID No. 017643	Operator Name PHILLIPS PETROLEUM COMPANY	Elevation 3672

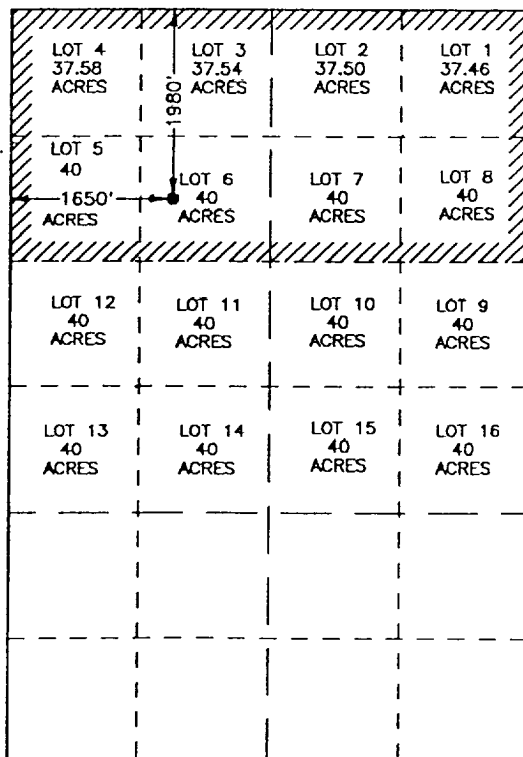
Surface Location

UL or lot No.	Section	Township	Range	Lot Idn	Feet from the	North/South line	Feet from the	East/West line	County
6	1	21 S	34 E		1980	NORTH	1650	WEST	LEA

Bottom Hole Location If Different From Surface

UL or lot No.	Section	Township	Range	Lot Idn	Feet from the	North/South line	Feet from the	East/West line	County
Dedicated Acres 310.08	Joint or Infill	Consolidation Code	Order No.						

NO ALLOWABLE WILL BE ASSIGNED TO THIS COMPLETION UNTIL ALL INTERESTS HAVE BEEN CONSOLIDATED  
OR A NON-STANDARD UNIT HAS BEEN APPROVED BY THE DIVISION



SCALE: 1"=2000'

OPERATOR CERTIFICATION

I hereby certify the the information  
contained herein is true and complete to the  
best of my knowledge and belief.

*Charles A. Sanders*  
Signature  
JAN 11 1998  
L. M. Sanders  
Printed Name  
Supv., Regulation/Proration  
Title  
05/31/01  
Date

SURVEYOR CERTIFICATION

I hereby certify that the well location shown  
on this plat was plotted from field notes of  
actual surveys made by me or under my  
supervision and that the same is true and  
correct to the best of my belief.

JANUARY 6, 1998

Date Surveyed  
Signature & Seal of  
Professional Surveyor  
JLP  
NEW MEXICO  
JAN 09 1998  
P.O. Num 97-11-2112  
Certificate No. 3233 JOHN W. WEST, 676  
PROFESSIONAL SURVEYOR EIDSON, 3239