

DISTRICT I
F.O. Box 1950, Hobbs, NM 88241-1950

State of New Mexico
Energy, Minerals and Natural Resources Department

Form C-102
Revised February 10, 1984
Submit to Appropriate District Office
State Lease - 4 Copies
Fee Lease - 3 Copies

DISTRICT II
P.O. Drawer DD, Artesia, NM 88211-0719

OIL CONSERVATION DIVISION

DISTRICT III
1000 Rio Brazos Rd., Artec, NM 87410

P.O. Box 2088
Santa Fe, New Mexico 87504-2088

☐ AMENDED REPORT

DISTRICT IV
P.O. Box 2088, Santa Fe, NM 87504-2088

WELL LOCATION AND ACREAGE DEDICATION PLAT

API Number 30-025-34271	Pool Code 97106	Pool Name Wildcat - Atoka
Property Code 22256	Property Name STATE "R"	Well Number 1
OGRID No. 017643	Operator Name PHILLIPS PETROLEUM COMPANY	Elevation 3672

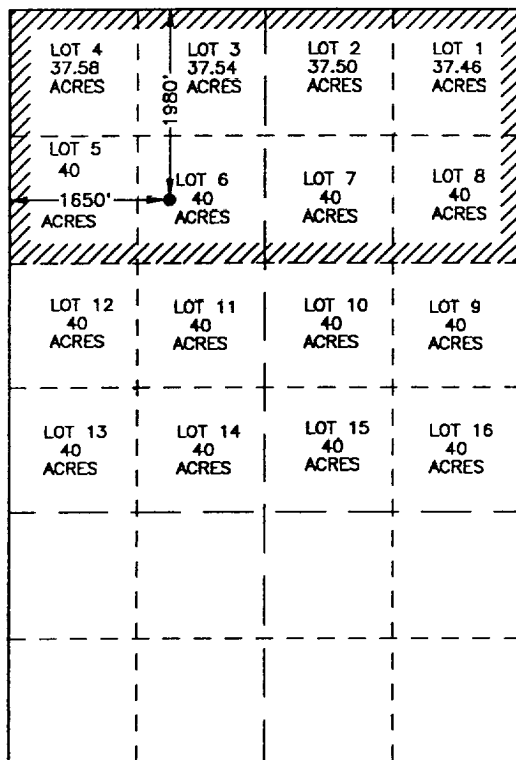
Surface Location

UL or lot No.	Section	Township	Range	Lot Idn	Feet from the	North/South line	Feet from the	East/West line	County
6	1	21 S	34 E		1980	NORTH	1650	WEST	LEA

Bottom Hole Location If Different From Surface

UL or lot No.	Section	Township	Range	Lot Idn	Feet from the	North/South line	Feet from the	East/West line	County
Dedicated Acres 310.08	Joint or Infill	Consolidation Code			Order No.				

NO ALLOWABLE WILL BE ASSIGNED TO THIS COMPLETION UNTIL ALL INTERESTS HAVE BEEN CONSOLIDATED
OR A NON-STANDARD UNIT HAS BEEN APPROVED BY THE DIVISION



SCALE: 1"=2000'

OPERATOR CERTIFICATION

I hereby certify the the information
contained herein is true and complete to the
best of my knowledge and belief.

Signature _____

Celeste G. Dale
Printed Name

~~Regulatory/Proration~~
 Title 6/8/00 Analyst _____
 Date January 14, 1998


SURVEYOR CERTIFICATION

I hereby certify that the well location shown on this plat was plotted from field notes of actual surveys made by me or under my supervision, and that the same is true and correct to the best of my belief.

JANUARY 6, 1998

Date Surveyed..... JLP

Signature & Seal of
Professional Surveyor


 NEW MEXICO
 01-09-98
 WFO (Num. 97-1105112)

Certificate No. JOHN W. WEST, 676
RONALD J. EIDSON, 3239

CMD :
OG6POOL

ONGARD
MAINTAIN POOL

07/31/01 08:48:40
OGOPK -TQF1

Pool Code : 97106 Pool Name : WILDCAT S213401F;ATOKA (GAS)
OCD Order No : R 0
Pool Type : G (O/G/A) Pool Creation Date : 05-01-2001
Pool Region : S (N/S) Last Updation Date : 05-01-2001

Special Pool Rules :
Oil Well Spacing : (Acres) Gas Well Spacing : 320 (Acres)
Orthodox Well Locn : 660 (Ft from end line) 660 (Ft from side line)
(Ft from nearest well) 10 (Ft from Q/Q line)
Top Unit Allowable : (BOPD)
Casinghead Gas Limit : (MCFD)
Gas-Oil Limit :
Depth Bracket : 12999 (Feet)

Prorated Gas (Y/N) : N Acre Basis : 100.00 (in %)
Deliv Basis : (in %)
Simultaneous Dedication Allowed (Y/N) : Y

M0015: Table update is successful.

PF01 HELP	PF02	PF03 EXIT	PF04 GoTo	PF05	PF06 CONFIRM
PF07	PF08	PF09 COMMENT	PF10	PF11	PF12

DISTRICT II
P.O. Drawer DD, Artesia, NM 88211-0719

DISTRICT III
1000 Rio Brazos Rd., Aztec, NM 87410

OIL CONSERVATION DIVISION

P.O. Box 2088
Santa Fe, New Mexico 87504-2088

☐ AMENDED REPORT

DISTRICT IV
P.O. Box 2088, Santa Fe, NM 87504-2088

WELL LOCATION AND ACREAGE DEDICATION PLAT

API Number 30-025-34271	Pool Code 82240	West Osudo	Pool Name (Morrow)
Property Code	Property Name STATE "R"		Well Number 1
OGRID No. 017643	Operator Name PHILLIPS PETROLEUM COMPANY		Elevation 3672

Surface Location

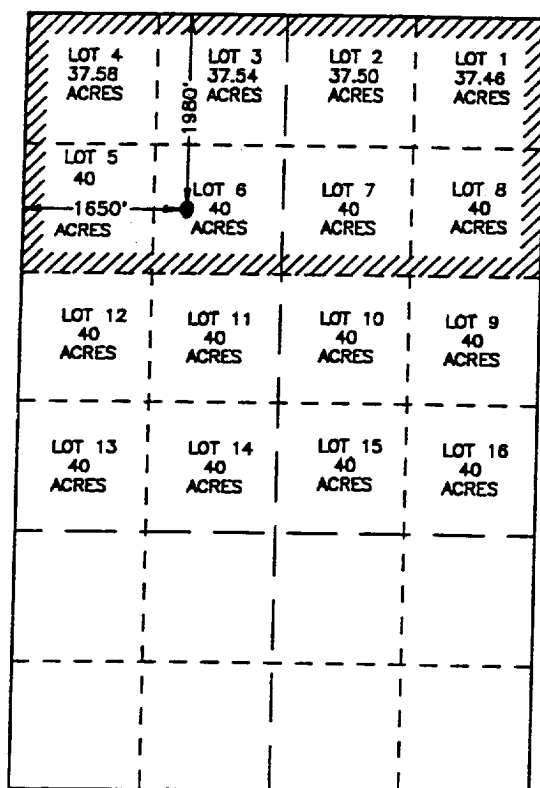
UL or lot No.	Section	Township	Range	Lot Idn	Feet from the	North/South line	Feet from the	East/West line	County
6	1	21 S	34 E		1980	NORTH	1650	WEST	LEA

Bottom Hole Location If Different From Surface

UL or lot No.	Section	Township	Range	Lot Idn	Feet from the	North/South line	Feet from the	East/West line	County
---------------	---------	----------	-------	---------	---------------	------------------	---------------	----------------	--------

Dedicated Acres	Joint or Infill	Consolidation Code	Order No.
310.08			

NO ALLOWABLE WILL BE ASSIGNED TO THIS COMPLETION UNTIL ALL INTERESTS HAVE BEEN CONSOLIDATED
OR A NON-STANDARD UNIT HAS BEEN APPROVED BY THE DIVISION



SCALE: 1"=2000'

OPERATOR CERTIFICATION

I hereby certify the the information
contained herein is true and complete to the
best of my knowledge and belief.

Cecilia H. Dale
Signature

Celeste G. Dale

Printed Name _____

Regulatory/Proration

Title _____ Analyst _____

01/14/98

Date _____

SURVEYOR CERTIFICATION

I hereby certify that the well location shown on this plat was plotted from field notes of actual surveys made by me or under my supervision, and that the same is true and correct to the best of my belief.

JANUARY 6, 1998

Date Searched 11/11/77 JLP

Signature & Seal of
Professional Surveyor

Genetik 22.11.98

7700. Num. 97-112-2112

EDWARD E. EIDSON, 3239