

**P&A PROCEDURE**

*DCD  
Mark*

**WELL NAME:** H. T. Orcutt (NCT-B) Com #14  
**API NUMBER** 30-025-34344  
**COORDINATES:** 1500' FNL & 725' FWL Unit E  
**SEC/TWN/RNG:** 4 - 21S - 36E  
**COUNTY/STATE:** Lea, NM

**OPERATOR:** Chevron  
**FIELD:** Eumont (Y7RQ)  
**DATE:** 7/29/01  
**BY:** DCD

**Provide 24 hr Notification to NMOCD of Pending Operations**

1. Hold pre-job safety mtg and spot equipment. Check 51/2" csg and 85/8" x 51/2" annulus for press.
2. ND WH equip and install well control equip.
3. Make trip w/ GR on slickline and check PPV, CIBP @ 3300'. Record FL. Displace wellbore fluids w/ freshwater.
4. Insert 51/2" wiper plug (cored to allow fluid bypass) into csg and push to 2950' w/ slickline.
5. Surface pour 14 cu ft of ZONITE to set 100' plug from approx 2850 - 2950'. Set plug in stages, check w/ SL to assure bridges are not occurring and required plug height is achieved. Pour at rate that minimizes potential to bridge. After setting plug, add water as necessary to assure hydration of plug.
6. Push cored 51/2" wiper plug to 1310' w/ slickline. Set 100' (14 cu ft) ZONITE plug from 1210 - 1310' at top of salt, using precautions as in Step 6. Add water if necessary to hydrate plug.
7. Push cored 51/2" wiper plug to 565' w/ SL. Set 100' (14 cu ft) ZONITE plug from 465 - 565' across 85/8" shoe, using precautions as in step 6. Add water if necessary to hydrate plug.
8. Push cored 51/2" wiper plug to 30' w/ slickline. Fill csg w/ ZONITE to 3' below GL (4 cu ft). Add water as necessary to hydrate plug.
9. Remove well control equip, secure WH and RD equip.
10. Allow 48 hours for ZONITE to hydrate, remove WH, cut off casings 3' below GL and cap wellbore.
11. Install dry hole marker stamped w/ required well identification, 4" OD x 4' above the GL.
12. Remove all equip and cut deadmen below GL.
13. Turn over to Chevron for any surface remediation work.

**Notes:** *When was tubing removed from well?*  
*Location designation refers to Unit F on Operator's Procedure sheet, Unit E on Schematic.*

**Estimated ZONITE Requirements:** 46 ft<sup>3</sup>

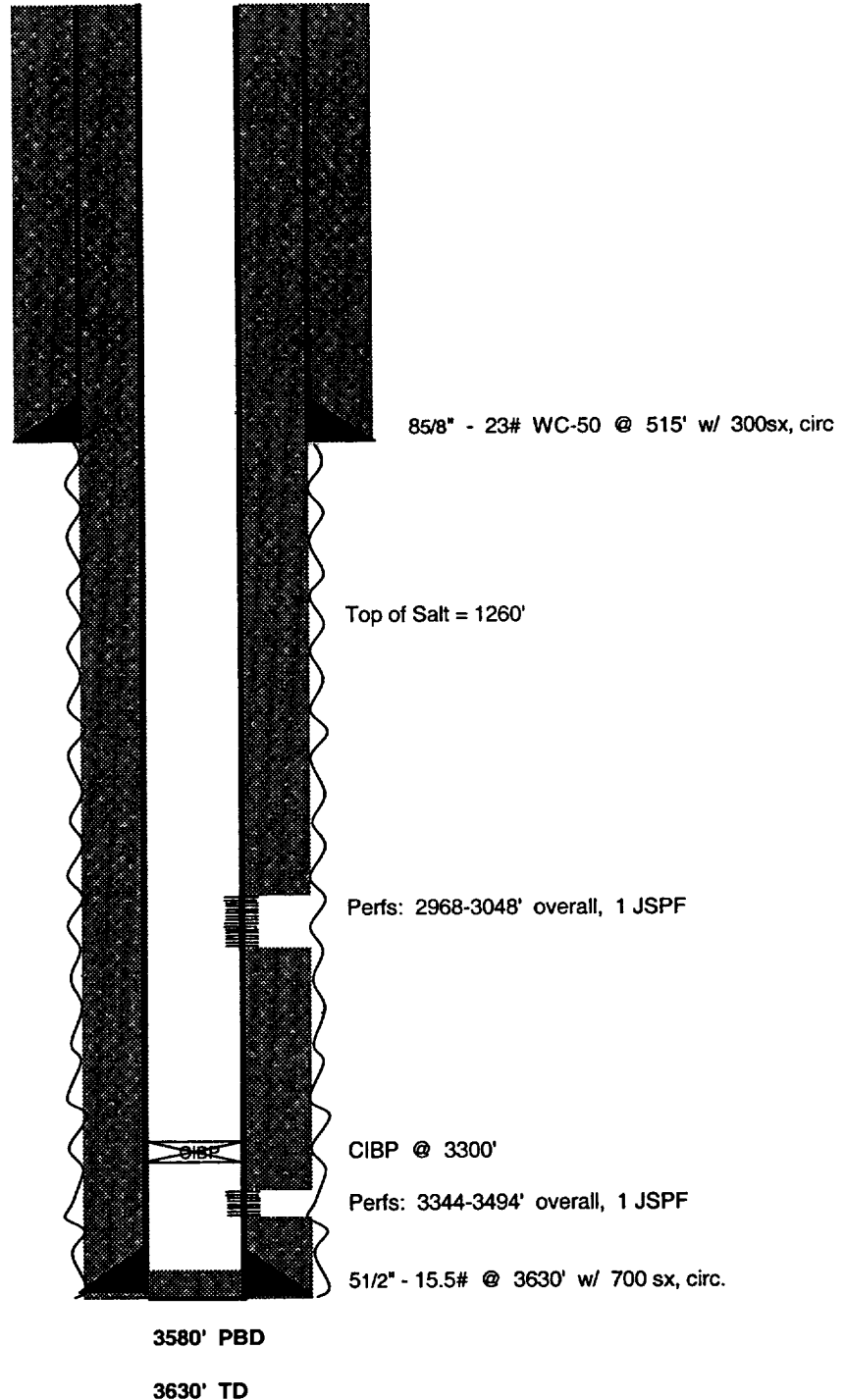
# WELL PLANNING SHEET EXISTING CONFIGURATION

WELL NAME: H. T. Orcutt (NCT-B) Com #14  
API NUMBER: 30-025-34344  
COORDINATES: 1500' FNL & 725' FWL Unit E  
SEC/TWN/RNG: 4 - 21S - 36E  
COUNTY/STATE: Lea, NM  
DRILLED: 1998

OPERATOR: Chevron  
FIELD: Eumont (Y7RQ)  
DATE: July 29, 2001  
BY: DCD

RKB = 6'

Formation Tops	
Salt	1260'
Yates	2640'
7 Rivers	2905'
Queen	3331'
Penrose	3454'



**WELL PLANNING SHEET**  
**Proposed P&A**

**WELL NAME:** H. T. Orcutt (NCT-B) Com #14  
**API NUMBER:** 30-025-34344  
**COORDINATES:** 1500' FNL & 725' FWL Unit E  
**SEC/TWN/RNG:** 4 - 21S - 36E  
**COUNTY/STATE:** Lea, NM  
**Drilled:** 1998

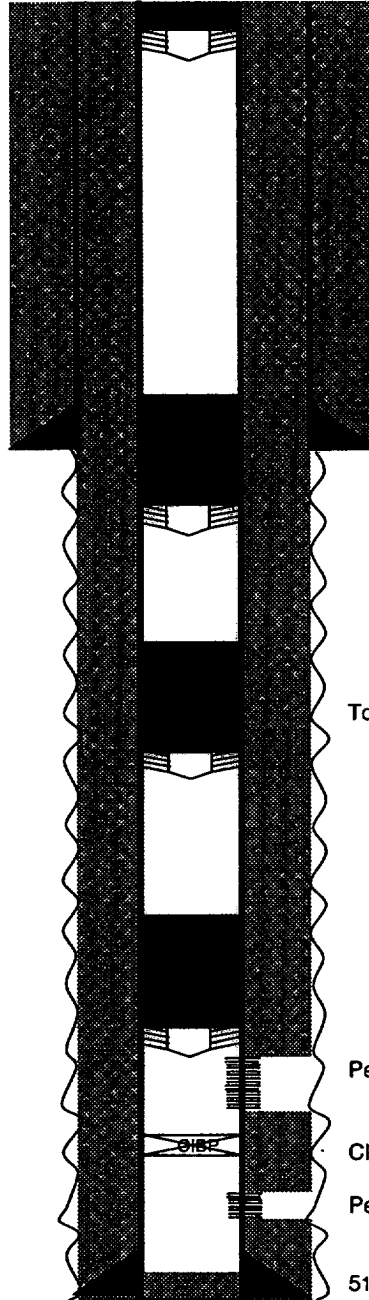
**OPERATOR:** Chevron  
**FIELD:** Eumont (Y7RQ)  
**DATE:** July 29, 2001  
**BY:** DCD

RKB = 6'

Formation Tops	
Salt	1260'
Yates	2640'
7 Rivers	2905'
Queen	3331'
Penrose	3454'

*Top Rustler  
1179*

ZONITE Plugs	
3 - 30'	
465 - 565'	
1210 - 1310'	
2850 - 2950'	



Legend	
Cement	
ZONITE	

85/8" - 23# WC-50 @ 515' w/ 300sx, circ

Top of Salt = 1260'

Perfs: 2968-3048' overall, 1 JSPF

CIBP @ 3300'

Perfs: 3344-3494' overall, 1 JSPF

51/2" - 15.5# K55 @ 3630' w/ 700 sx, circ.

3580' PBD

3630' TD