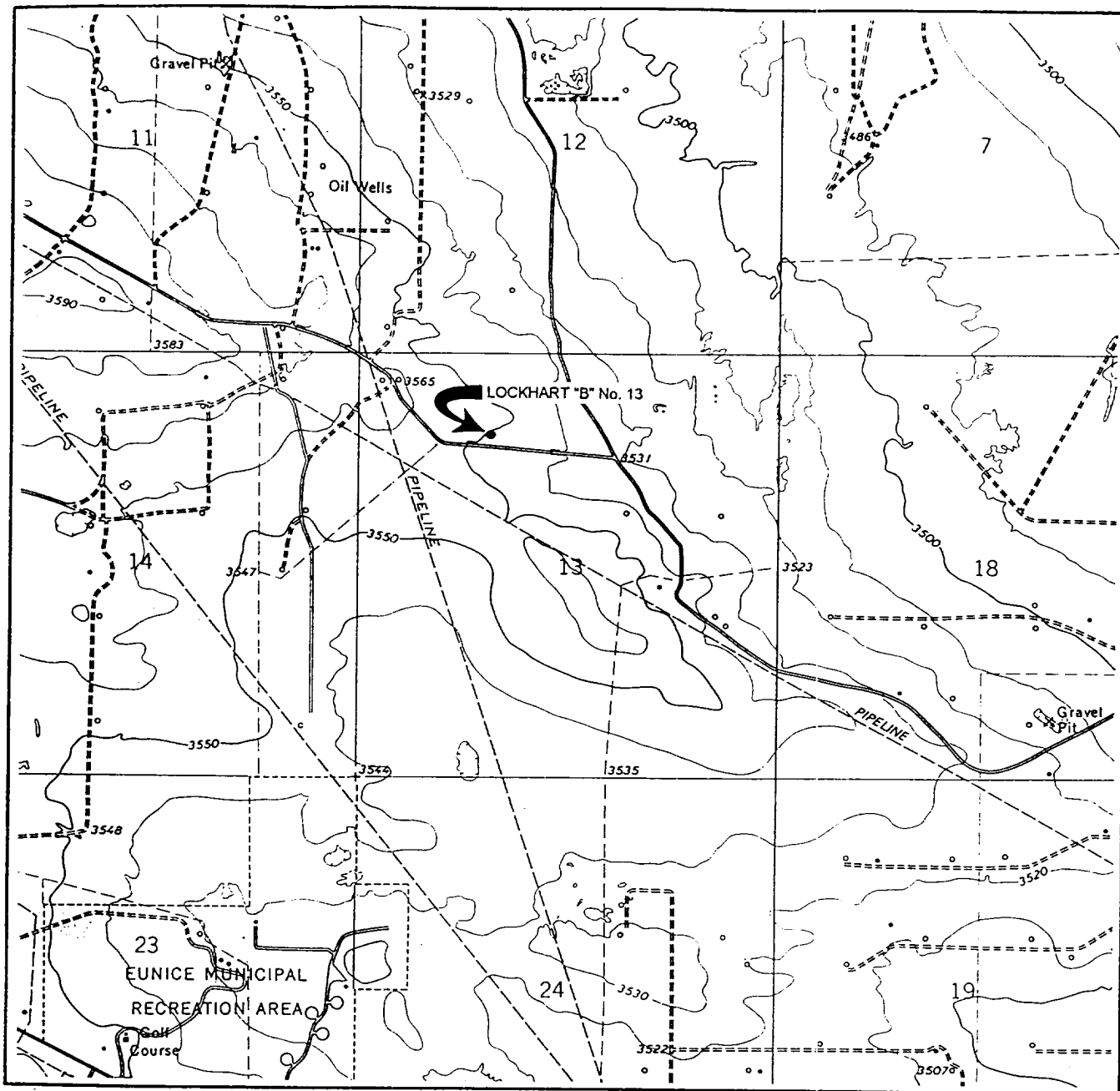


# LOCATION VERIFICATION MAP



SCALE: 1" = 2000'  
WTC 45165

SEC. 13 TWP. 21-S RGE. 36-E

SURVEY N.M.P.M

COUNTY LEA STATE NM

DESCRIPTION 990' FNL & 1650' FWL

ELEVATION 3549'

OPERATOR CONOCO INC.

LEASE LOCKHART 'B' NO. 13

USGS TOPO MAP EUNICE, NEW MEXICO

CONTOUR INTERVAL 10'

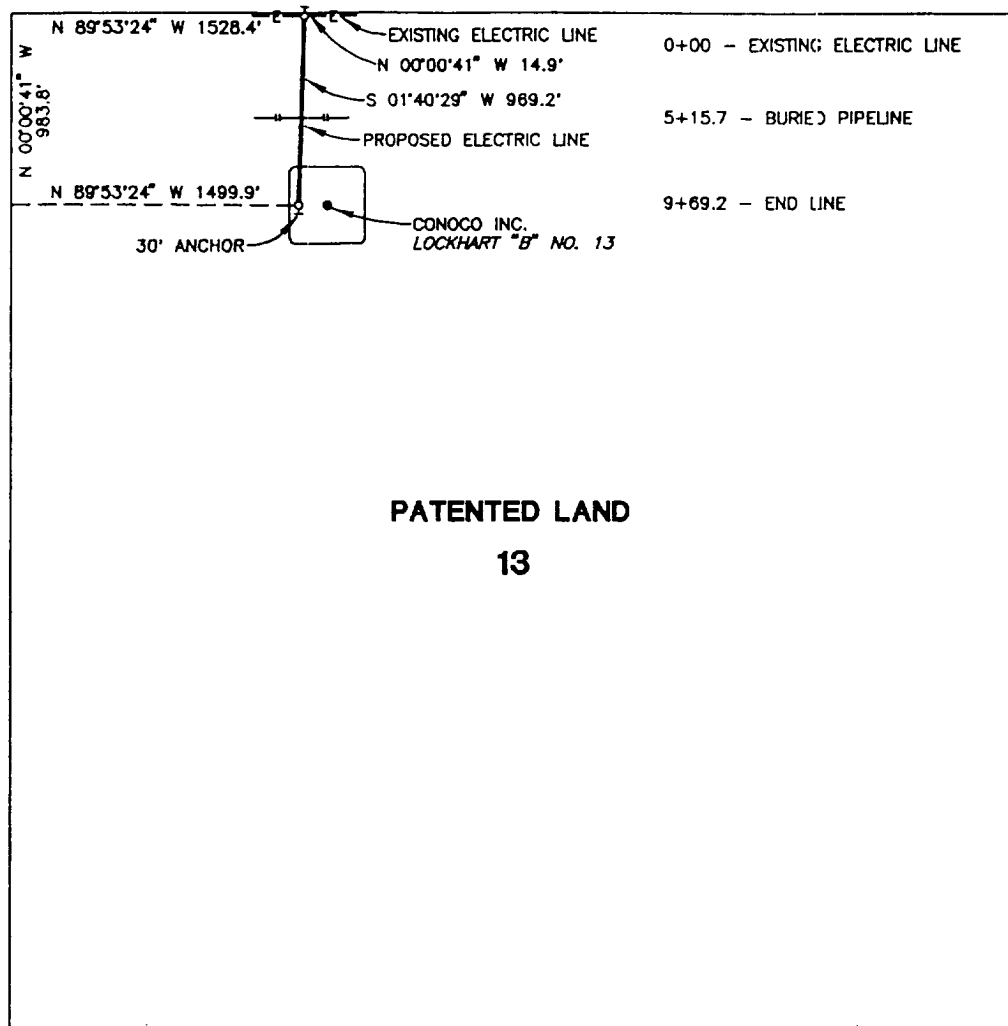
**WEST TEXAS CONSULTANTS, INC.**

ENGINEERS-PLANNERS-SURVEYORS

MIDLAND, TEXAS

915-685-3800

SECTION 13, T 21 SOUTH, RANGE 36 E., S. 1, N.M.P.M.  
LEA COUNTY, NEW MEXICO



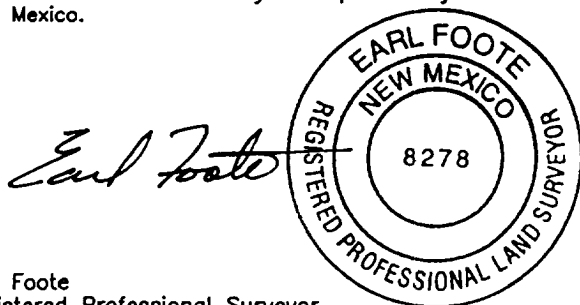
CENTERLINE DESCRIPTION OF A PROPOSED ELECTRIC LINE:

BEGINNING at a point in an existing electric line, from which point the northwest corner of Section 13, T-21-S, R-36-E, N.M.P.M., Lea County, New Mexico bears N 00° 00' 41" W, 14.9 feet and N 89° 53' 24" W, 1528.4 feet;

THENCE S 01° 40' 29" W, with the centerline of proposed electric line, 969.2 feet to a point for the end of this line, from which point an anchor easement bears S 01° 40' 29" W, 30.0 feet and the northwest corner of Section 13 bears N 89° 53' 24" W, 1499.9 feet and N 00° 00' 41" W, 983.8 feet.

PROPOSED ELECTRIC LINE TO SERVE  
LOCKHART "B" WELL No. 13

I hereby certify that this plat was prepared from an actual survey made on the ground and meets or exceeds all requirements for land surveys as specified by the state of New Mexico.



Earl Foote  
Registered Professional Surveyor  
New Mexico Certificate No. 8278

CONOCO INC.

969.2 feet of proposed electric line in  
Section 13, T-21-S, R-36-E, N.M.P.M.,  
Lea County, New Mexico

WEST TEXAS CONSULTANTS, INC.

ENGINEERS-PLANNERS-SURVEYORS

MIDLAND, TEXAS

Survey Date: 2-9-98	Date: 2-26-98	Scale: 1" = 1000'
WTC No. 45165	Drawn By: R.S.	Sheet 1 of 1