

Mike L. Mankin
Right of Way Agent
Right of Way and Claims

Conoco Inc.
10 Desta Drive, Suite 430E
Midland, Texas 79705
(915) 686-5794

February 19, 1998

Bureau of Land Management
620 E. Greene
Carlsbad, New Mexico 88221

Attn: Mr. Barry Hunt, Surface Protection Specialist

Re: Settlement for Well Location and Appurtenances
Lockhart B, Well #13
Section 13, T21S, R36E
Lea County, New Mexico

Dear Mr. Hunt:

By this letter Conoco Inc. has made settlement , with surface owner, for the construction of the above referenced location and appurtenances..

If you have any questions, please contact me at 915-686-5794.

Sincerely,

A handwritten signature in cursive script that reads "Mike L. Mankin".

Mike L. Mankin .

A large, solid black rectangular redaction mark covering several lines of text at the bottom of the letter.

District I
PO Box 1980, Hobbs, NM 88241-1980

District II
PO Drawer DD, Artesia, NM 88211-0719

District III
1000 Rio Brazos Rd. Aztec, NM 87410

District IV
PO Box 2088, Santa Fe, NM 87504-2088

State of New Mexico
Energy, Minerals & Natural Resources Department

OIL CONSERVATION DIVISION

PO Box 2088
Santa Fe, NM 87504-2088

Form C-102

Revised February 21, 1994

instructions on back

Submit to Appropriate District Office

State Lease - 4 Copies

Fee Lease - 3 Copies

☐ AMENDED REPORT

WELL LOCATION AND ACREAGE DEDICATION PLAT

API Number 30-025-34351	2 Pool Code 76480	3 Pool Name Eumont Yates-Seven Rivers-Queen (Pro Gas)
4 Property Code 18655	5 Property Name Lockhart B COM	6 Well Number #13
7 OGRID No. 005073	8 Operator Name Conoco Inc., 10 Desta Drive, Ste. 100W, Midland, TX 79705-4500	9 Elevation 3549'

10 Surface Location

UL or lot no. C	Section 13	Township 21S	Range 36E	Lot Idn	Feet from the 990'	North/South line North	Feet from the 1650'	East/West line West	County Lea
--------------------	---------------	-----------------	--------------	---------	-----------------------	---------------------------	------------------------	------------------------	---------------

11 Bottom Hole Location If Different From Surface

UL or lot no.	Section	Township	Range	Lot Idn	Feet from the	North/South line	Feet from the	East/West line	County
---------------	---------	----------	-------	---------	---------------	------------------	---------------	----------------	--------

12 Dedicated Acres 480	13 Joint or Infill	14 Consolidation Code	15 Order No.
---------------------------	--------------------	-----------------------	--------------

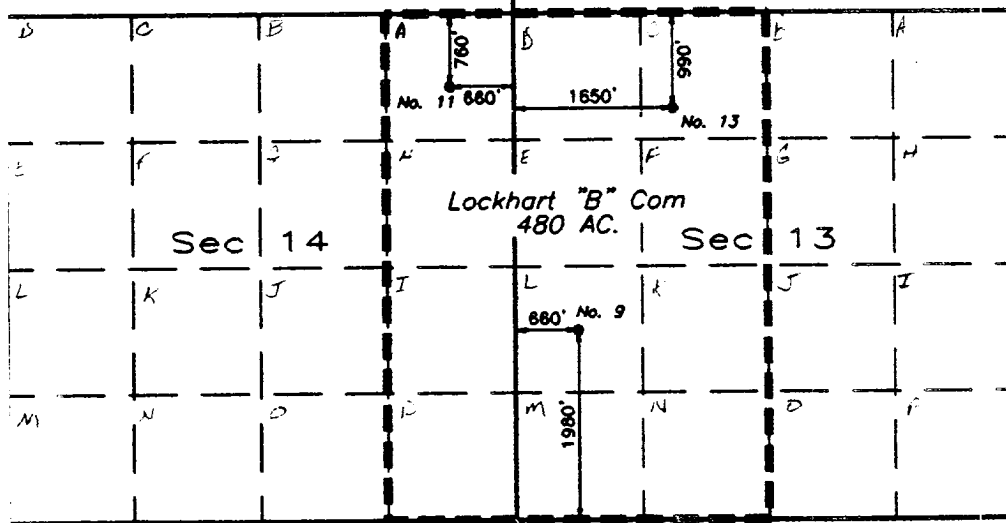
NO ALLOWABLE WILL BE ASSIGNED TO THIS COMPLETION UNTIL ALL INTERESTS HAVE BEEN CONSOLIDATED
OR A NON-STANDARD UNIT HAS BEEN APPROVED BY THE DIVISION

T-21-S

R-36-E

Sec 11

Sec 12



Sec 23

Sec 24

SCALE: 1" = 2000'

17 OPERATOR CERTIFICATION

I hereby certify that the information contained herein is true and complete to the best of my knowledge and belief

Signature *Kay Maddox*
Printed Name Kay Maddox

Title Regulatory Agent

Date October 29, 1998

18 SURVEYOR CERTIFICATION

I hereby certify that the well location shown on this plat was plotted from field notes of actual surveys made by me or under my supervision, and that the same is true and correct to the best of my belief.

Date of Survey
Signature and Seal of Professional Surveyor:

Certificate Number