

District I  
P. O. Box 1980, Hobbs, NM 88241-1980  
District II  
P. O. Drawer DD, Artesia, NM 88211-0719  
District III  
1000 Rio Brazos Rd., Aztec, NM 87410  
District IV  
P. O. Box 2088, Santa Fe, NM 87504-2088

State of New Mexico  
Energy, Minerals & Natural Resources Departm.

OIL CONSERVATION DIVISION  
P. O. Box 2088  
Santa Fe, NM 87504-2088

Form C-101  
Revised February 10, 1994  
Instructions on back  
Submit to Appropriate District Office  
State Lease - 6 Copies  
Fee Lease - 5 Copies

☐ AMENDED REPORT

APPLICATION FOR PERMIT TO DRILL, RE-ENTER, DEEPEN, PLUGBACK, OR ADD A ZONE

<sup>1</sup> Operator Name and Address: <b>Apache Corporation</b> c/o J. O. Easley, Inc. P. O. Box 245 Artesia, NM 88211-0245		<sup>2</sup> OGRID Number 873
<sup>4</sup> Property Code 22503	<sup>5</sup> Property Name Northeast Drinkard Unit	<sup>3</sup> API Number 30-025- 34412
		<sup>6</sup> Well No. 230

<sup>7</sup> Surface Location									
UL or lot no.	Section	Township	Range	Lot Idn	Feet from the	North/South Line	Feet from the	East/West line	County
Lot 13	2	21S	37E		3677	SOUTH	135	WEST	Lea

<sup>8</sup> Proposed Bottom Hole Location If Different From Surface									
UL or lot no.									
<sup>9</sup> Proposed Pool 1 Eunice; Blinebry- Tubb- Drinkard, North					<sup>10</sup> Proposed Pool 2				

<sup>11</sup> Work Type Code N	<sup>12</sup> Well Type Code O	<sup>13</sup> Cable/Rotary R	<sup>14</sup> Lease Type Code S	<sup>15</sup> Ground Level Elevation
<sup>16</sup> Multiple	<sup>17</sup> Proposed Depth 6900'	<sup>18</sup> Formation Blinebry/Drinkard	<sup>19</sup> Contractor	<sup>20</sup> Spud Date ASAP

<sup>21</sup> Proposed Casing and Cement Program					
Hole size	Casing Size	Casing weight/foot	Setting Depth	Sacks of Cement	Estimated TOC
11"	8 5/8"	24# K-55 STC	1365'	410 sxs PBCZ	circulate to surf
7 7/8"	5 1/2"	17# K-55 LTC	6900'	850 sxs Hal. Interfill "C"	circulate to surf
				+350 sxs 50/50	
				Pozmix	

<sup>22</sup> Describe the proposed program. If this application is to DEEPEN or PLUG BACK give the data on the present productive zone and proposed new productive zone. Describe the blowout prevention program, if any. Use additional sheets if necessary.

Propose to drill 11" hole to 1365', run & set 1365' of 8 5/8" and cement, *circulate to surface*

Drill 7 7/8" hole to 6900', run & set 6900' of 5 1/2" and cement.

Blow Out Prevention: See attached copy  
Permit Expires 1 Year From Approval  
Date Unless Drilling Underway

<sup>23</sup> I hereby certify that the information given above is true and complete to the best of my knowledge and belief. Signature: <i>Michael R. Burch</i>		OIL CONSERVATION DIVISION	
Printed name: Michael R. Burch, CPL		Approved by: <i>Chris Williams</i> ORIGINAL SIGNED BY CHRIS WILLIAMS DISTRICT I SUPERVISOR	
Title: Agent for Apache Corporation		Title: <i>03 1998</i> Approval: <i>03 1998</i> Expiration Date:	
Date: 6-3-1998	Phone: 505-746-1070	Conditions of Approval: Attached <input type="checkbox"/>	

DISTRICT I  
P.O. Box 1980, Hobbs, NM 88241-1980

State of New Mexico  
Energy, Minerals and Natural Resources Department

Form C-102  
Revised February 10, 1994  
Submit to Appropriate District Office  
State Lease - 4 Copies  
Fee Lease - 3 Copies

DISTRICT II  
P.O. Drawer DD, Artesia, NM 88211-0719

DISTRICT III  
1000 Rio Brazos Rd., Aztec, NM 87410

DISTRICT IV  
P.O. BOX 2088, SANTA FE, N.M. 87504-2088

OIL CONSERVATION DIVISION

P.O. Box 2088  
Santa Fe, New Mexico 87504-2088

☐ AMENDED REPORT

WELL LOCATION AND ACREAGE DEDICATION PLAT

API Number <b>30-025-34412</b>	Pool Code <b>22900</b>	Pool Name <b>EWING BLINERY-TUBB-DRINKARD, NORTH</b>
Property Code <b>22503</b>	Property Name <b>NORTHEAST DRINKARD UNIT</b>	Well Number <b>230</b>
OGRID No. <b>873</b>	Operator Name <b>APACHE CORPORATION</b>	Elevation <b>3480</b>

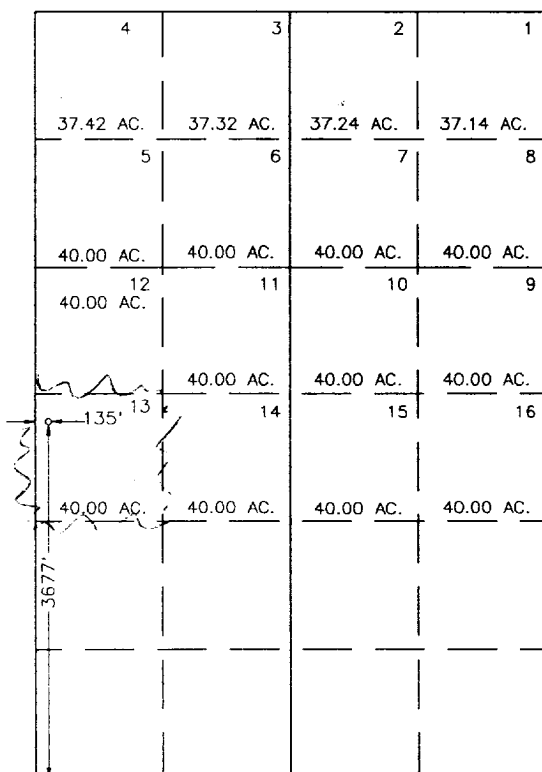
Surface Location

UL or lot No.	Section	Township	Range	Lot Idn	Feet from the	North/South line	Feet from the	East/West line	County
LOT 13	2	21 S	37 E		3677	SOUTH	135	WEST	LEA

Bottom Hole Location If Different From Surface

UL or lot No.	Section	Township	Range	Lot Idn	Feet from the	North/South line	Feet from the	East/West line	County
Dedicated Acres <b>40</b>	Joint or Infill	Consolidation Code	Order No.						

NO ALLOWABLE WILL BE ASSIGNED TO THIS COMPLETION UNTIL ALL INTERESTS HAVE BEEN CONSOLIDATED  
OR A NON-STANDARD UNIT HAS BEEN APPROVED BY THE DIVISION



OPERATOR CERTIFICATION

I hereby certify the the information  
contained herein is true and complete to the  
best of my knowledge and belief.

**Michael R. Burch**  
Signature  
**MICHAEL R. BURCH**  
Printed Name  
**AGENT/APACHE**  
Title  
**6-3-98**  
Date

SURVEYOR CERTIFICATION

I hereby certify that the well location shown  
on this plat was plotted from field notes of  
actual surveys made by me or under my  
supervision, and that the same is true and  
correct to the best of my belief.

MAY 26, 1998

Date Surveyed  
Signature & Seal of  
Professional Surveyor  
**6-2-98**  
98-11-0798  
Certified No. JOHN W. WEST 676  
RONALD J. FEIDSON 3239  
CARM LARSON 12641

DISTRICT I  
P.O. Box 1980, Hobbs, NM 88241-1980

State of New Mexico  
Energy, Minerals and Natural Resources Department

Form C-102  
Revised February 10, 1994  
Submit to Appropriate District Office  
State Lease - 4 Copies  
Fee Lease - 3 Copies

DISTRICT II  
P.O. Drawer DD, Artesia, NM 88211-0719

DISTRICT III  
1000 Rio Brazos Rd., Aztec, NM 87410

DISTRICT IV  
P.O. BOX 2088, SANTA FE, N.M. 87504-2088

OIL CONSERVATION DIVISION  
P.O. Box 2088  
Santa Fe, New Mexico 87504-2088

☐ AMENDED REPORT

WELL LOCATION AND ACREAGE DEDICATION PLAT

API Number	Pool Code	Pool Name
Property Code	Property Name NORTHEAST DRINKARD UNIT	Well Number 230
OGRID No.	Operator Name APACHE CORPORATION	Elevation 3480

Surface Location

UL or lot No.	Section	Township	Range	Lot Idn	Feet from the	North/South line	Feet from the	East/West line	County
LOT 13	2	21 S	37 E		3677	SOUTH	135	WEST	LEA

Bottom Hole Location If Different From Surface

UL or lot No.	Section	Township	Range	Lot Idn	Feet from the	North/South line	Feet from the	East/West line	County
Dedicated Acres	Joint or Infill	Consolidation Code	Order No.						

NO ALLOWABLE WILL BE ASSIGNED TO THIS COMPLETION UNTIL ALL INTERESTS HAVE BEEN CONSOLIDATED  
OR A NON-STANDARD UNIT HAS BEEN APPROVED BY THE DIVISION

OPERATOR CERTIFICATION

I hereby certify the the information  
contained herein is true and complete to the  
best of my knowledge and belief.

Signature

Printed Name

Title

Date

SURVEYOR CERTIFICATION

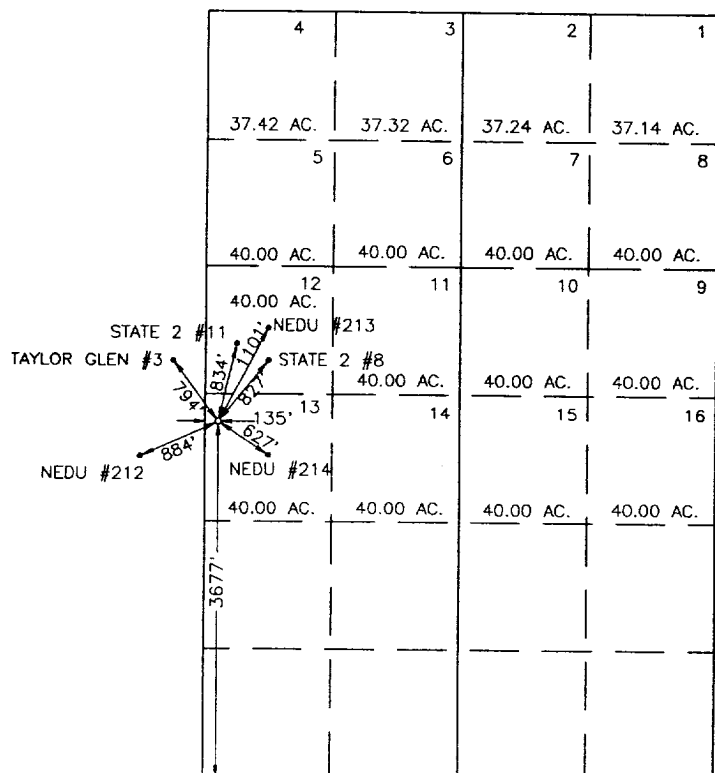
I hereby certify that the well location shown  
on this plat was plotted from field notes of  
actual surveys made by me or under my  
supervision and that the same is true and  
correct to the best of my belief.

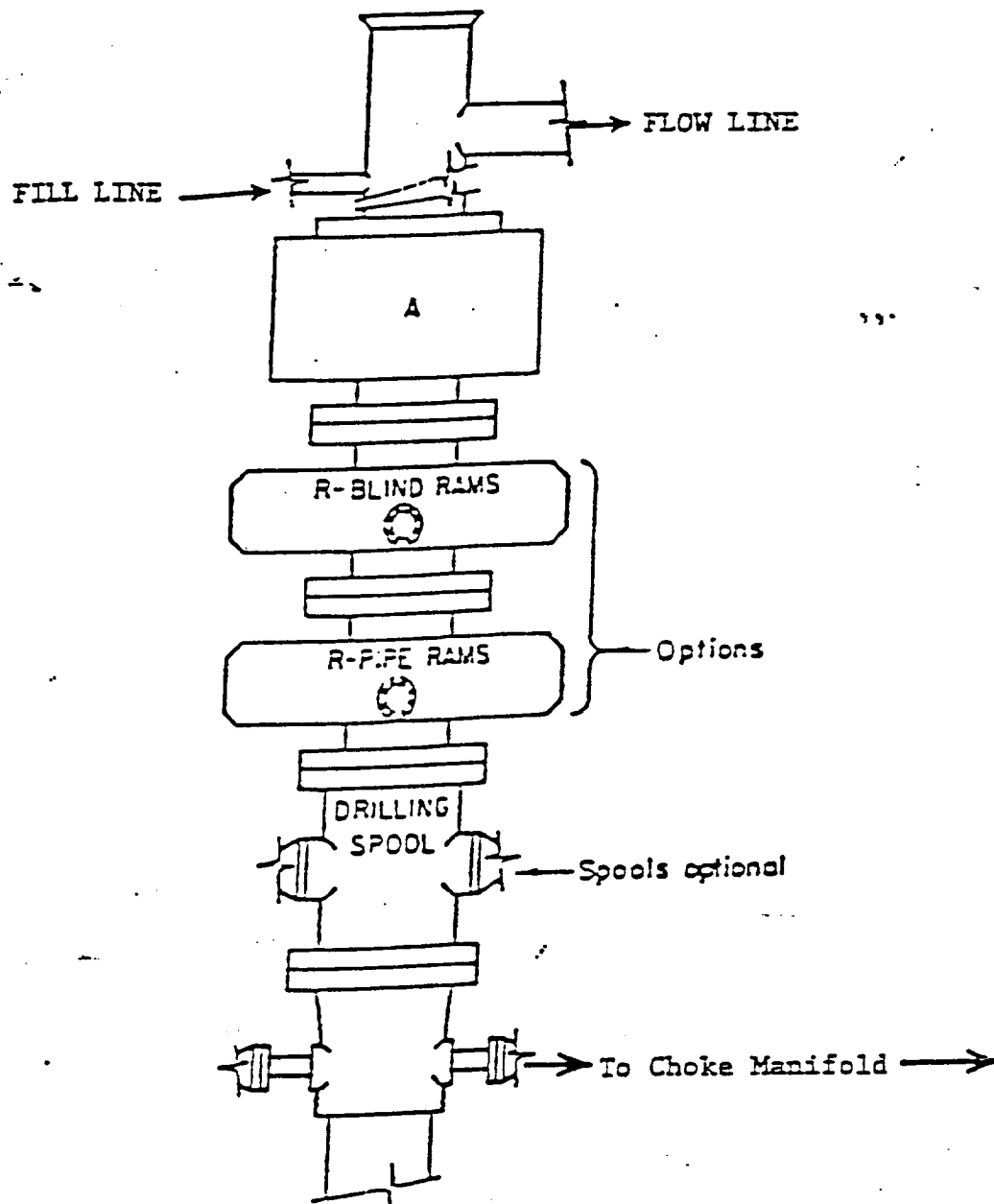
MAY 26, 1998

Date Surveyed DMCC  
Signature & Seal of  
Professional Surveyor

98-11-0798

Certificate No. JOHN W. WEST 676  
RONALD J. EIDSON 3239  
GARY EIDSON 12641





# ARRANGEMENT SRRA

900 Series  
3000 PSI WP

8/2/8/01

Accepted  
Date  
00