

District I
P. O. Box 1980, Hobbs, NM 88241-1980
District II
P. O. Drawer DD, Artesia, NM 88211-0719
District III
1000 Rio Brazos Rd., Aztec, NM 87410
District IV
P. O. Box 2088, Santa Fe, NM 87504-2088

State of New Mexico
Energy, Minerals & Natural Resources Department

OIL CONSERVATION DIVISION
P. O. Box 2088
Santa Fe, NM 87504-2088

Form C-101

Revised February 10, 1994

Instructions on back

Submit to Appropriate District Office

State Lease - 6 Copies

Fee Lease - 5 Copies



AMENDED REPORT

APPLICATION FOR PERMIT TO DRILL, RE-ENTER, DEEPEN, PLUGBACK, OR ADD A ZONE

¹ Operator Name and Address. Apache Corporation c/o J. O. Easley, Inc. P. O. Box 245 Artesia, NM 88211-0245		² OGRID Number 873
		³ API Number 30-025-34414
⁴ Property Code 22503	⁵ Property Name Northeast Drinkard Unit	⁶ Well No. 330

⁷ Surface Location									
UL or lot no. 1004	Section 2	Township 21S	Range 37E	Lot Idn	Feet from the 1004	North/South Line SOUTH	Feet from the 200	East/West line WEST	County Lea

⁸ Proposed Bottom Hole Location If Different From Surface									
UL or lot no.									
⁹ Proposed Pool 1 Eunice; Blinebry- Tubb- Drinkard, North					¹⁰ Proposed Pool 2				

¹¹ Work Type Code N	¹² Well Type Code O	¹³ Cable/Rotary R	¹⁴ Lease Type Code S	¹⁵ Ground Level Elevation 3459
¹⁶ Multiple	¹⁷ Proposed Depth 6900'	¹⁸ Formation Blinebry/Drinkard	¹⁹ Contractor	²⁰ Spud Date ASAP

²¹ Proposed Casing and Cement Program					
Hole size	Casing Size	Casing weight/foot	Setting Depth	Sacks of Cement	Estimated TOC
11"	8 5/8"	24# K-55 STC	1365'	410 sxs PBCZ	circulate to surf
7 7/8"	5 1/2"	17# K-55 LTC	6900'	850 sxs Hal. Interfill "C"	circulate to surf
				+350 sxs 50/50	
				Pozmix	

²² Describe the proposed program. If this application is to DEEPEN or PLUG BACK give the data on the present productive zone and proposed new productive zone. Describe the blowout prevention program, if any. Use additional sheets if necessary.

Propose to drill 11" hole to 1365', run & set 1365' of 8 5/8" and cement,

Drill 7 7/8" hole to 6900', run & set 6900' of 5 1/2" and cement.

Blow Out Prevention: See attached copy

Permit Expires 1 Year From Approval
Data Entered During Underway

²³ I hereby certify that the information given above is true and complete to the best of my knowledge and belief. Signature: <u>Michael R. Burch</u>		OIL CONSERVATION DIVISION	
Printed name: Michael R. Burch, CPL		Approved by: <u>ORIGINAL SIGNED BY CHRIS WILLIAMS</u>	
Title: Agent for Apache Corporation		Title: <u>DISTRICT I SUPERVISOR</u>	
Date: 6-3-1998		Approval Date: <u>JUN 08 1998</u>	Expiration Date:
Phone: 505-746-1070		Conditions of Approval: Attached <input type="checkbox"/>	

DISTRICT I
P.O. Box 1980, Hobbs, NM 88241-1980

State of New Mexico
Energy, Minerals and Natural Resources Department

Form C-102
Revised February 10, 1994
Submit to Appropriate District Office
State Lease - 4 Copies
Fee Lease - 3 Copies

DISTRICT II
P.O. Drawer DD, Artesia, NM 88211-0719

DISTRICT III
1000 Rio Brazos Rd., Aztec, NM 87410

OIL CONSERVATION DIVISION

P.O. Box 2088
Santa Fe, New Mexico 87504-2088

DISTRICT IV
P.O. BOX 2088, SANTA FE, N.M. 87504-2088

☐ AMENDED REPORT

WELL LOCATION AND ACREAGE DEDICATION PLAT

API Number 30-025-34414	Pool Code 22900	Pool Name EUNICE BLINERY-TUBB-DRINKARD, NORTH
Property Code 22503	Property Name NORTHEAST DRINKARD UNIT	Well Number 330
OGRID No. 873	Operator Name APACHE CORPORATION	Elevation 3459

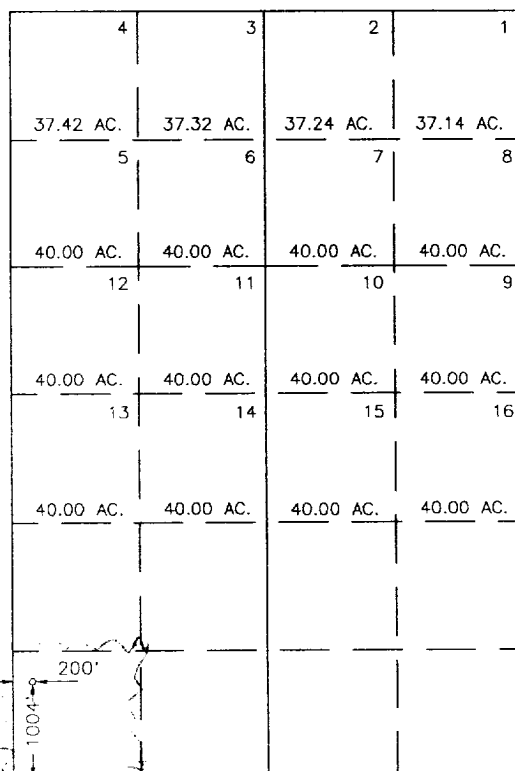
Surface Location

UL or lot No.	Section	Township	Range	Lot Idn	Feet from the	North/South line	Feet from the	East/West line	County
M	2	21 S	37 E		1004	SOUTH	200	WEST	LEA

Bottom Hole Location If Different From Surface

UL or lot No.	Section	Township	Range	Lot Idn	Feet from the	North/South line	Feet from the	East/West line	County
Dedicated Acres 40	Joint or Infill	Consolidation Code	Order No.						

NO ALLOWABLE WILL BE ASSIGNED TO THIS COMPLETION UNTIL ALL INTERESTS HAVE BEEN CONSOLIDATED
OR A NON-STANDARD UNIT HAS BEEN APPROVED BY THE DIVISION



OPERATOR CERTIFICATION

I hereby certify the the information
contained herein is true and complete to the
best of my knowledge and belief.

Signature
MICHAEL R. BURCH
Printed Name
AGENT/APACHE
Title
6-3-98
Date

SURVEYOR CERTIFICATION

I hereby certify that the well location shown
on this plat was plotted from field notes of
actual surveys made by me or under my
supervision, and that the same is true and
correct to the best of my belief.

MAY 26, 1998

Date Surveyed
Signature & Seal of
Professional Surveyor
Certificate No. JOHN W. WEST 676
ROMAN F. EIDSON 3239
DARY EIDSON 12641

DISTRICT IV
P.O. BOX 2088, SANTA FE, N.M. 87504-2088

Form C-102
Revised February 10, 1994
Submit to Appropriate District Office
State Lease - 4 Copies
Fee Lease - 3 Copies

P.O. Box 2088
Santa Fe, New Mexico 87504-2088

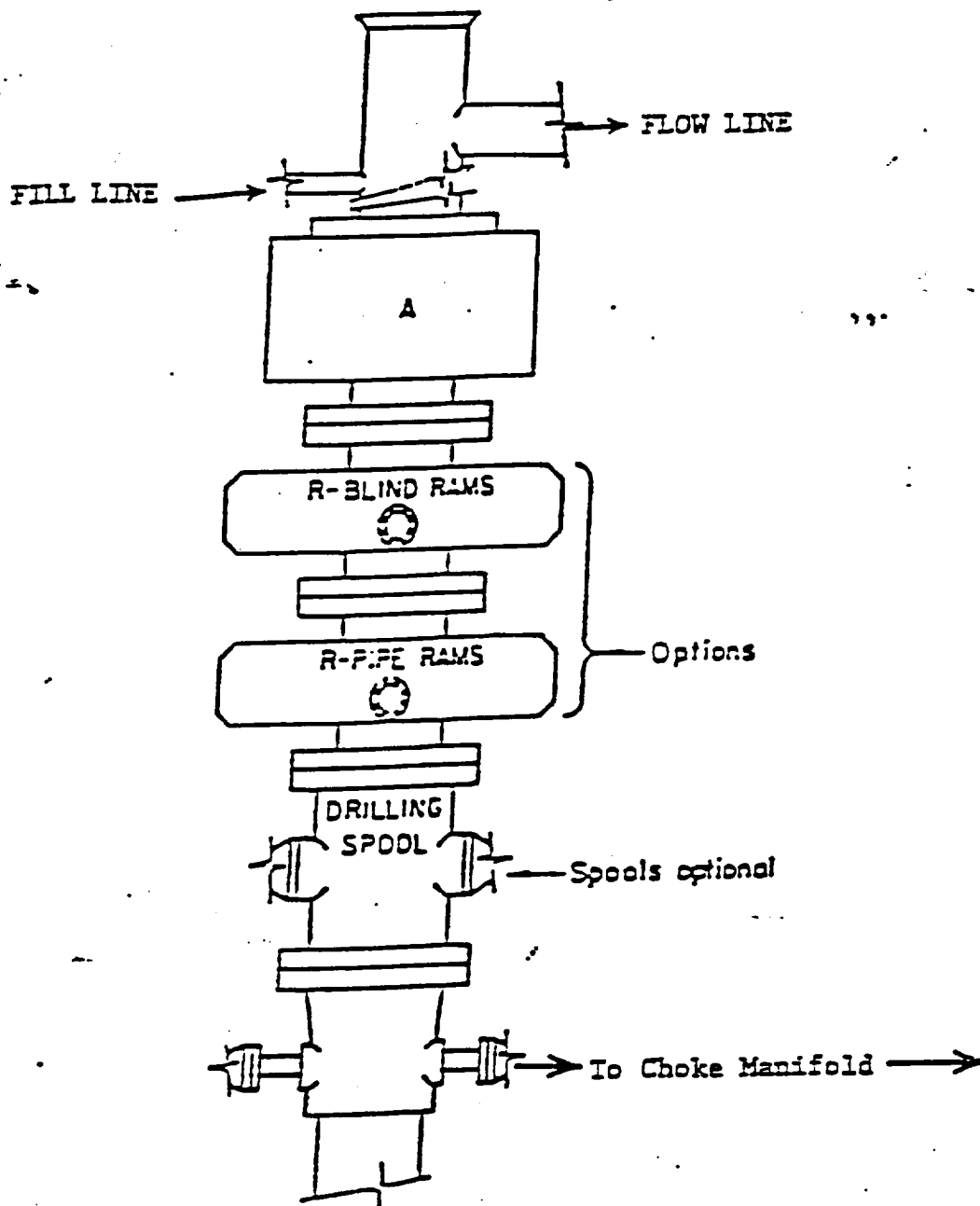
☐ AMENDED REPORT

API Number	Pool Code	Pool Name
Property Code	Property Name	Well Number
	NORTHEAST DRINKARD UNIT	330
OGRID No.	Operator Name	Elevation
	APACHE CORPORATION	3459

UL or lot No.	Section	Township	Range	Lot Idn	Feet from the	North/South line	Feet from the	East/West line	County
M	2	21 S	37 E		1004	SOUTH	200	WEST	LEA

UL or lot No.	Section	Township	Range	Lot Idn	Feet from the	North/South line	Feet from the	East/West line	County
Dedicated Acres		Joint or Infill	Consolidation Code		Order No.				

<h2 style="text-align: center;">OPERATOR CERTIFICATION</h2> <p style="text-align: center;"><i>I hereby certify the the information contained herein is true and complete to the best of my knowledge and belief.</i></p>		
<hr/> <p>Signature</p>		
<hr/> <p>Printed Name</p>		
<hr/> <p>Title</p>		
<hr/> <p>Date</p>		
<h2 style="text-align: center;">SURVEYOR CERTIFICATION</h2> <p style="text-align: center;"><i>I hereby certify that the well location shown on this plat was plotted from field notes of actual surveys made by me or under my supervision, and that the same is true and correct to the best of my belief.</i></p> <p style="text-align: center;">MAY 26, 1998</p>		
<p>Date Surveyed</p>		<p>DMCC</p>
<p>Signature & Seal of Professional Surveyor</p>		
<p style="text-align: center;">98-11-0800</p>		
<p>Certificate No.</p>	<p>JOHN W. WEST RONALD J. EIDSON GARY EIDSON</p>	<p>676 3239 12641</p>



ARRANGEMENT SRRA

900 Series
3000 PSI WP