

District I
P. O. Box 1980, Hobbs, NM 88241-1980
District II
P. O. Drawer DD, Artesia, NM 88211-0719
District III
1000 Rio Brazos Rd., Aztec, NM 87410
District IV
P. O. Box 2088, Santa Fe, NM 87504-2088

State of New Mexico
Energy, Minerals & Natural Resources Department

OIL CONSERVATION DIVISION

P. O. Box 2088
Santa Fe, NM 87504-2088

Form C-101

Revised February 10, 1994

Instructions on back

Submit to Appropriate District Office

State Lease - 6 Copies

Fee Lease - 5 Copies

☐ AMENDED REPORT

APPLICATION FOR PERMIT TO DRILL, RE-ENTER, DEEPEN, PLUGBACK, OR ADD A ZONE

¹ Operator Name and Address. Apache Corporation c/o J. O. Easley, Inc. P. O. Box 245 Artesia, NM 88211-0245		² OGRID Number 873
		³ API Number 30-025- 34415
⁴ Property Code 22503	⁵ Property Name Northeast Drinkard Unit	⁶ Well No. 126

⁷ Surface Location									
UL or lot no.	Section	Township	Range	Lot Idn	Feet from the	North/South Line	Feet from the	East/West line	County
Lot 5	2	21S	37E		2500	NORTH	130	WEST	Lea

⁸ Proposed Bottom Hole Location If Different From Surface									
UL or lot no.									
⁹ Proposed Pool 1 Eunice; Blinebry- Tubb- Drinkard, North					¹⁰ Proposed Pool 2				

¹¹ Work Type Code N	¹² Well Type Code O	¹³ Cable/Rotary R	¹⁴ Lease Type Code S	¹⁵ Ground Level Elevation 3487
¹⁶ Multiple	¹⁷ Proposed Depth 6950'	¹⁸ Formation Blinebry/Drinkard	¹⁹ Contractor	²⁰ Spud Date ASAP

²¹ Proposed Casing and Cement Program					
Hole size	Casing Size	Casing weight/foot	Setting Depth	Sacks of Cement	Estimated TOC
11"	8 5/8"	24# K-55 STC	1365'	410 sxs PBCZ	circulate to surf
7 7/8"	5 1/2"	17# K-55 LTC	6950'	850 sxs Hal. Interfill "C"	circulate to surf
				+350 sxs 50/50	
				Pozmix	

²² Describe the proposed program. If this application is to DEEPEN or PLUG BACK give the data on the present productive zone and proposed new productive zone. Describe the blowout prevention program, if any. Use additional sheets if necessary.

Propose to drill 11" hole to 1365', run & set 1365' of 8 5/8" and cement,

Drill 7 7/8" hole to 6950'; run & set 6950' of 5 1/2" and cement.

Blow Out Prevention: See attached copy
Permit Expires 1 Year from Date
Date Unless Drilling Underway

²³ I hereby certify that the information given above is true and complete to the best of my knowledge and belief. Signature: <u>Michael R. Burch</u>		OIL CONSERVATION DIVISION	
Printed name: Michael R. Burch, CPL		Approved by: ORIGINAL SIGNED BY CHRIS WILLIAM	
Title: Agent for Apache Corporation		Title: DISTRICT I SUPERVISOR	
Date: 6-3-1998		Approval Date: JUN 08 1998	Expiration Date:
Phone: 505-746-1070		Conditions of Approval Attached <input type="checkbox"/>	

DISTRICT I
P.O. Box 1980, Hobbs, NM 88241-1980

State of New Mexico

Energy, Minerals and Natural Resources Department

Form C-102
Revised February 10, 1994
Submit to Appropriate District Office
State Lease - 4 Copies
Fee Lease - 3 Copies

DISTRICT II
P.O. Drawer DD, Artesia, NM 88211-0719

DISTRICT III
1000 Rio Brazos Rd., Aztec, NM 87410

DISTRICT IV
P.O. BOX 2088, SANTA FE, N.M. 87504-2088

OIL CONSERVATION DIVISION

P.O. Box 2088
Santa Fe, New Mexico 87504-2088

☐ AMENDED REPORT

WELL LOCATION AND ACREAGE DEDICATION PLAT

API Number 30-025-34415	Pool Code 22900	Pool Name EWNICE! BLINERY - TUBB - DRINKARD, NORTH
Property Code 22503	Property Name NORTHEAST DRINKARD UNIT	Well Number 126
OGRID No. 873	Operator Name APACHE CORPORATION	Elevation 3487

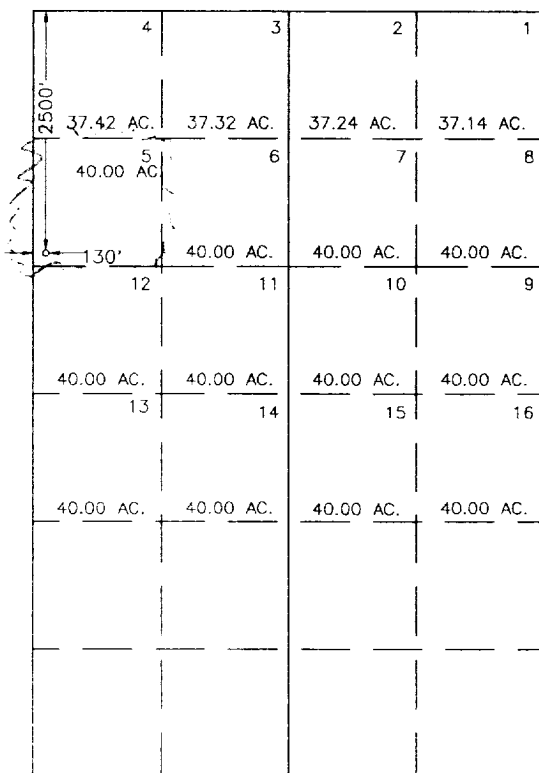
Surface Location

UL or lot No. LOT 5	Section 2	Township 21 S	Range 37 E	Lot Idn	Feet from the 2500	North/South line NORTH	Feet from the 130	East/West line WEST	County LEA
------------------------	--------------	------------------	---------------	---------	-----------------------	---------------------------	----------------------	------------------------	---------------

Bottom Hole Location If Different From Surface

UL or lot No.	Section	Township	Range	Lot Idn	Feet from the	North/South line	Feet from the	East/West line	County
Dedicated Acres 40	Joint or Infill	Consolidation Code	Order No.						

NO ALLOWABLE WILL BE ASSIGNED TO THIS COMPLETION UNTIL ALL INTERESTS HAVE BEEN CONSOLIDATED
OR A NON-STANDARD UNIT HAS BEEN APPROVED BY THE DIVISION



OPERATOR CERTIFICATION

I hereby certify the the information
contained herein is true and complete to the
best of my knowledge and belief.

Michael R. Burch

Signature

MICHAEL R. BURCH

Printed Name

AGENT/APACHE

Title

6-3-98

Date

SURVEYOR CERTIFICATION

I hereby certify that the well location shown
on this plat was plotted from field notes of
actual surveys made by me or under my
supervision, and that the same is true and
correct to the best of my belief.

MAY 26, 1998

Date Surveyed

DMCC

Signature & Seal
Professional Surveyor

John G. Eidsen
6-298

98-11-0705
Certificate No. JOHN G. WEST 676
JOHN G. EIDSON 3239
JOHN G. EIDSON 12641

☐ AMENDED REPORT

WELL LOCATION AND ACREAGE DEDICATION PLAT

API Number		Pool Code	Pool Name
Property Code	Property Name NORTHEAST DRINKARD UNIT		Well Number 126
OGRID No.	Operator Name APACHE CORPORATION		Elevation 3487

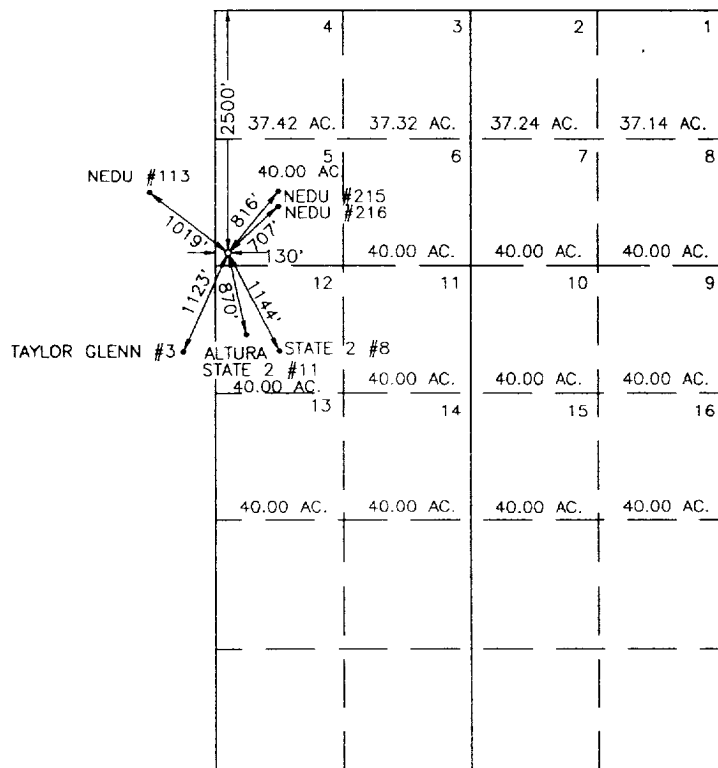
Surface Location

UL or lot No.	Section	Township	Range	Lot Idn	Feet from the	North/South line	Feet from the	East/West line	County
LOT 5	2	21 S	37 E		2500	NORTH	130	WEST	LEA

Bottom Hole Location If Different From Surface

UL or lot No.	Section	Township	Range	Lot Idn	Feet from the	North/South line	Feet from the	East/West line	County
Dedicated Acres	Joint or Infill	Consolidation Code	Order No.						

NO ALLOWABLE WILL BE ASSIGNED TO THIS COMPLETION UNTIL ALL INTERESTS HAVE BEEN CONSOLIDATED
OR A NON-STANDARD UNIT HAS BEEN APPROVED BY THE DIVISION



OPERATOR CERTIFICATION

I hereby certify the the information
contained herein is true and complete to the
best of my knowledge and belief.

Signature

Printed Name _____

Title

Date _____

SURVEYOR CERTIFICATION

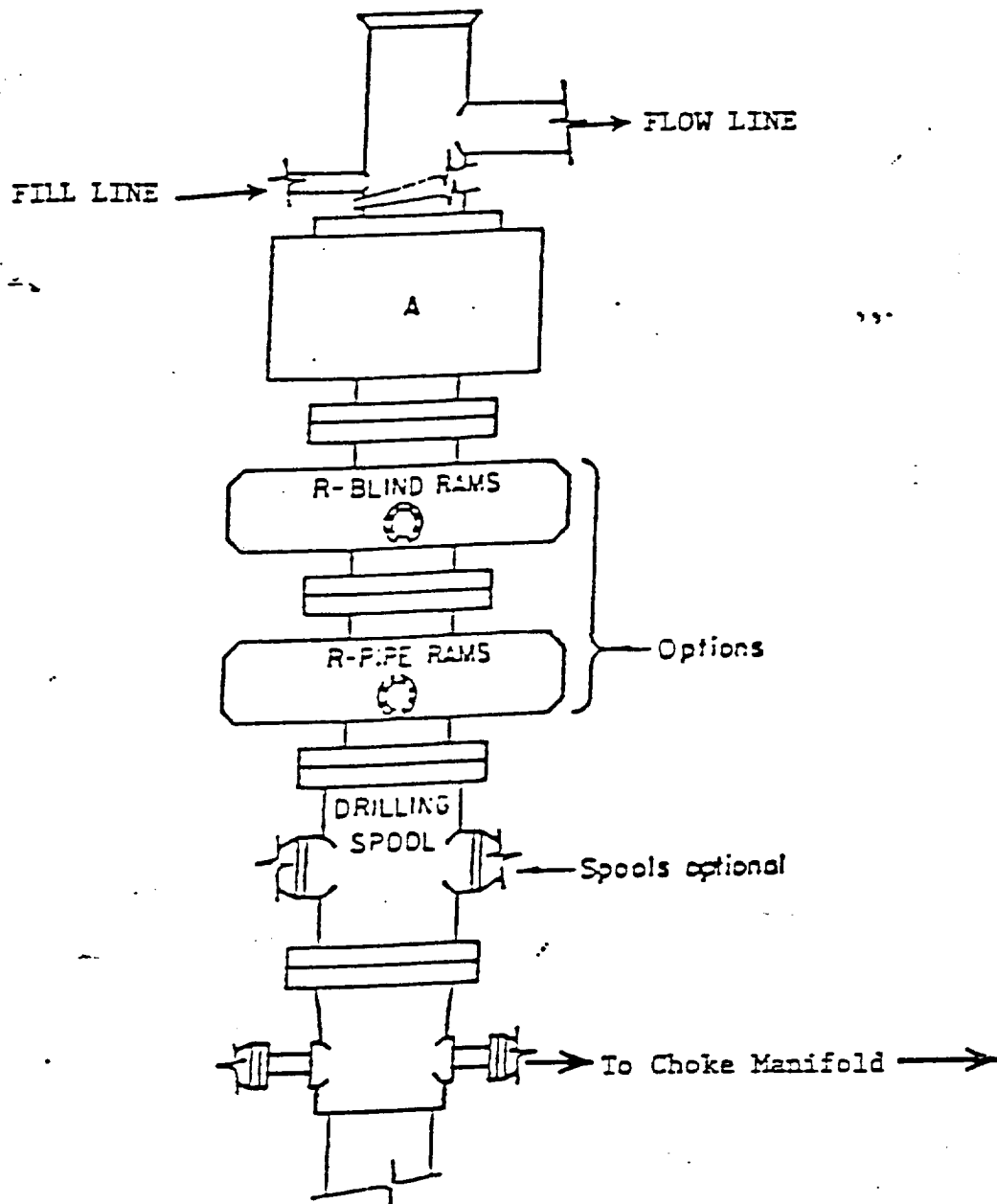
I hereby certify that the well location shown on this plat was plotted from field notes of actual surveys made by me or under my supervision, and that the same is true and correct to the best of my belief.

MAY 26, 1998

Date Surveyed	DMCC
Signature & Seal of Professional Surveyor	

98-11-0795

Certificate No.	JOHN W. WEST	676
	RONALD J. EIDSON	3239
	GARY EIDSON	12641



ARRANGEMENT SRRA

900 Series
3000 PSI WP