

District I  
P. O. Box 1980, Hobbs, NM 88241-1980  
District II  
P. O. Drawer DD, Artesia, NM 88211-0719  
District III  
1000 Rio Brazos Rd., Aztec, NM 87410  
District IV  
P. O. Box 2088, Santa Fe, NM 87504-2088

State of New Mexico  
Energy, Minerals & Natural Resources Department

OIL CONSERVATION DIVISION  
P. O. Box 2088  
Santa Fe, NM 87504-2088

Form C-101  
Revised February 10, 1994  
Instructions on back  
Submit to Appropriate District Office  
State Lease - 6 Copies  
Fee Lease - 5 Copies

☐ AMENDED REPORT

APPLICATION FOR PERMIT TO DRILL, RE-ENTER, DEEPEN, PLUGBACK, OR ADD A ZONE

<sup>1</sup> Operator Name and Address. <b>Apache Corporation</b> c/o J. O. Easley, Inc. P. O. Box 245 Artesia, NM 88211-0245		<sup>2</sup> OGRID Number 873
<sup>4</sup> Property Code 22503	<sup>5</sup> Property Name Northeast Drinkard Unit	<sup>3</sup> API Number 30-025- 34431
		<sup>6</sup> Well No. 233

<sup>7</sup> Surface Location

UL or lot no.	Section	Township	Range	Lot Idn	Feet from the	North/South Line	Feet from the	East/West line	County
K	3	21S	37E		2562	South	1330	West	Lea

<sup>8</sup> Proposed Bottom Hole Location If Different From Surface

UL or lot no.									

<sup>9</sup> Proposed Pool 1

Eunice; Blinebry- Tubb- Drinkard, North

<sup>10</sup> Proposed Pool 2

<sup>11</sup> Work Type Code N	<sup>12</sup> Well Type Code O	<sup>13</sup> Cable/Rotary R	<sup>14</sup> Lease Type Code S P	<sup>15</sup> Ground Level Elevation 3426'
<sup>16</sup> Multiple	<sup>17</sup> Proposed Depth 6,900'	<sup>18</sup> Formation Blinebry/Drinkard	<sup>19</sup> Contractor	<sup>20</sup> Spud Date ASAP

<sup>21</sup> Proposed Casing and Cement Program

Hole size	Casing Size	Casing weight/foot	Setting Depth	Sacks of Cement	Estimated TOC
11"	8 5/8"	24# K-55 STC	1365'	410 sxs PBCZ	circulate to surf
7 7/8"	5 1/2"	17# K-55 LTC	6,900'	850 sxs Hal. Interfill "C"	circulate to surf
				+350 sxs 50/50	
				Pozmix	

<sup>22</sup> Describe the proposed program. If this application is to DEEPEN or PLUG BACK give the data on the present productive zone and proposed new productive zone. Describe the blowout prevention program, if any. Use additional sheets if necessary.

Propose to drill 11" hole to 1365', run & set 1365' of 8 5/8" and cement, circulate to surface.

Drill 7 7/8" hole to 6,900', run & set 6,900' of 5 1/2" and cement, circulate to surface.

Blow Out Prevention: See attached copy

Permit Expires 1 Year From Approval  
Date Unless Drilling Underway

<sup>23</sup> I hereby certify that the information given above is true and complete to the best of my knowledge and belief.

Signature: *Michael R. Burch*

Printed name: Michael R. Burch, CPL

Title: Agent for Apache Corporation

Date: 6-15-1998

Phone: 505-746-1070

OIL CONSERVATION DIVISION

Approved by: ORIGINAL SIGNED BY CHRIS WILLIAMS  
DISTRICT I SUPERVISOR

Title:

Approval Date: JUN 18 1998

Expiration Date:

Conditions of Approval:  
Attached ☐

*12*  
*MP*

DISTRICT I  
P.O. Box 1980, Hobbs, NM 88241-1980

DISTRICT II  
P.O. Drawer DD, Artesia, NM 88211-0719

DISTRICT III  
1000 Rio Brazos Rd., Aztec, NM 87410

DISTRICT IV  
P.O. BOX 2088, SANTA FE, N.M. 87504-2088

State of New Mexico  
Energy, Minerals and Natural Resources Department

Form C-102  
Revised February 10, 1994  
Submit to Appropriate District Office  
State Lease - 4 Copies  
Fee Lease - 3 Copies

OIL CONSERVATION DIVISION

P.O. Box 2088  
Santa Fe, New Mexico 87504-2088

☐ AMENDED REPORT

WELL LOCATION AND ACREAGE DEDICATION PLAT

API No. <b>30-025-34131</b>	Pool No. <b>22700</b>	Well Name <b>Eunice Blinbry-Tubb-Drinkard, North</b>
Property Code <b>22503</b>	Property Name <b>NORTHEAST DRINKARD UNIT</b>	Well Number <b>233</b>
OGRID No. <b>873</b>	Operator Name <b>APACHE CORPORATION</b>	Elevation <b>3426</b>

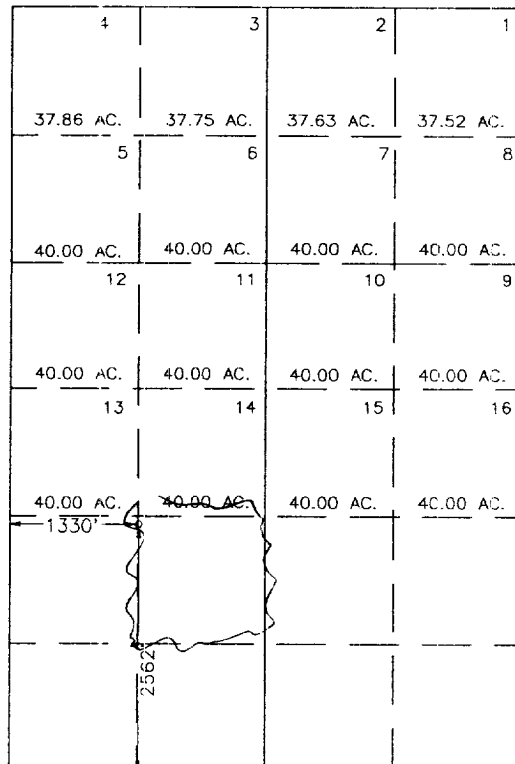
Surface Location

UL or lot No.	Section	Township	Range	Lot Idn	Feet from the	North/South line	Feet from the	East/West line	County
K	3	21 S	37 E		2562	SOUTH	1330	WEST	LEA

Bottom Hole Location If Different From Surface

UL or lot No.	Section	Township	Range	Lot Idn	Feet from the	North/South line	Feet from the	East/West line	County
Dedicated Acres <b>40</b>	Joint or Infill	Consolidation Code	Order No.						

NO ALLOWABLE WILL BE ASSIGNED TO THIS COMPLETION UNTIL ALL INTERESTS HAVE BEEN CONSOLIDATED  
OR A NON-STANDARD UNIT HAS BEEN APPROVED BY THE DIVISION



OPERATOR CERTIFICATION

I hereby certify the the information  
contained herein is true and complete to the  
best of my knowledge and belief.

*Michael R. Burch*  
Signature

Michael R. Burch, CPL

Printed Name  
Agent / Apache Corp.

Title  
6-15-98  
Date

SURVEYOR CERTIFICATION

I hereby certify that the well location shown  
on this plat was plotted from field notes of  
actual surveys made by me or under my  
supervision, and that the same is true and  
correct to the best of my belief.

JUNE 1, 1998

Date Surveyed **JUNE 1, 1998** DMCC

Signature & Seal of  
Professional Surveyor

*John W. West*  
6-15-98  
98-11-078

Certificate No. **JOHN W. WEST** 676  
**JOHN W. WEST** 3239  
**JOHN W. WEST** 12641

DISTRICT I  
P.O. Box 1980, Hobbs, NM 88241-1980

State of New Mexico  
Energy, Minerals and Natural Resources Department

Form C-102  
Revised February 10, 1994  
Submit to Appropriate District Office  
State Lease - 4 Copies  
Fee Lease - 3 Copies

DISTRICT II  
P.O. Drawer DD, Artesia, NM 88211-0719

DISTRICT III  
1000 Rio Brazos Rd., Aztec, NM 87410

DISTRICT IV  
P.O. BOX 2088, SANTA FE, N.M. 87504-2088

OIL CONSERVATION DIVISION  
P.O. Box 2088

Santa Fe, New Mexico 87504-2088

☐ AMENDED REPORT

WELL LOCATION AND ACREAGE DEDICATION PLAT

API Number 30-025-3443	Pool Code 22900	Pool Name Eunice Blumberg-Jubb-Drinkard North
Property Code 22503	Property Name NORTHEAST DRINKARD UNIT	Well Number 233
OGRID No. 873	Operator Name APACHE CORPORATION	Elevation 3426

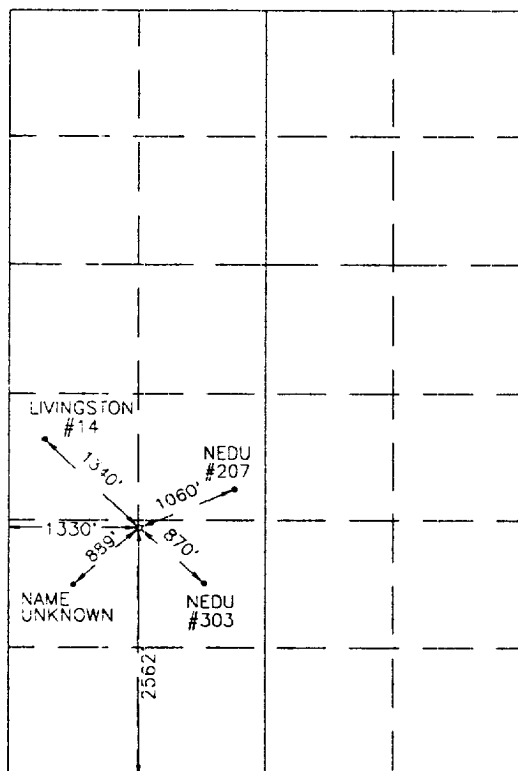
Surface Location

UL or lot No. K	Section 3	Township 21 S	Range 37 E	Lot Idn	Feet from the 2562	North/South line SOUTH	Feet from the 1330	East/West line WEST	County LEA
--------------------	--------------	------------------	---------------	---------	-----------------------	---------------------------	-----------------------	------------------------	---------------

Bottom Hole Location If Different From Surface

UL or lot No.	Section	Township	Range	Lot Idn	Feet from the	North/South line	Feet from the	East/West line	County
Dedicated Acres	Joint or Infill	Consolidation Code	Order No.						

NO ALLOWABLE WILL BE ASSIGNED TO THIS COMPLETION UNTIL ALL INTERESTS HAVE BEEN CONSOLIDATED  
OR A NON-STANDARD UNIT HAS BEEN APPROVED BY THE DIVISION



OPERATOR CERTIFICATION

I hereby certify the the information  
contained herein is true and complete to the  
best of my knowledge and belief.

Signature

Printed Name

Title

Date

SURVEYOR CERTIFICATION

I hereby certify that the well location shown  
on this plat was plotted from field notes of  
actual surveys made by me or under my  
supervision, and that the same is true and  
correct to the best of my belief.

JUNE 1, 1998

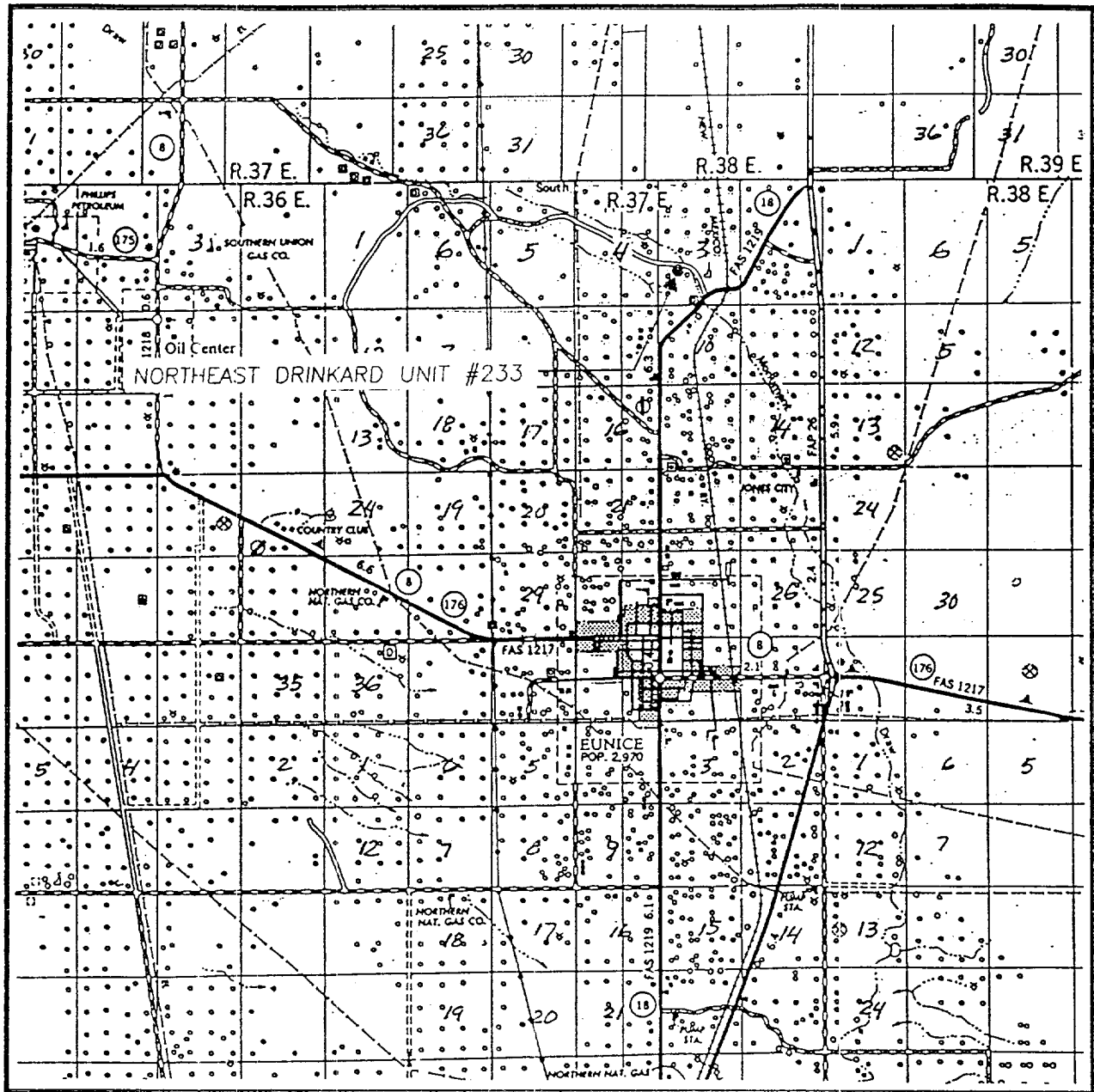
Date Surveyed DMCC

Signature & Seal of  
Professional Surveyor

98-11-0787

Certificate No. JOHN W. WEST 676  
RONALD J. EIDSON 3239  
GARY EIDSON 12641

# VICINITY MAP



SCALE: 1" = 2 MILES

SEC. 3 TWP. 21-S RGE. 37-E

SURVEY N.M.P.M.

COUNTY LEA

DESCRIPTION 2562' FSL & 1330' FWL

ELEVATION 3426

OPERATOR APACHE CORPORATION

LEASE NORTHEAST DRINKARD UNIT

**JOHN WEST ENGINEERING**  
**HOBBS, NEW MEXICO**

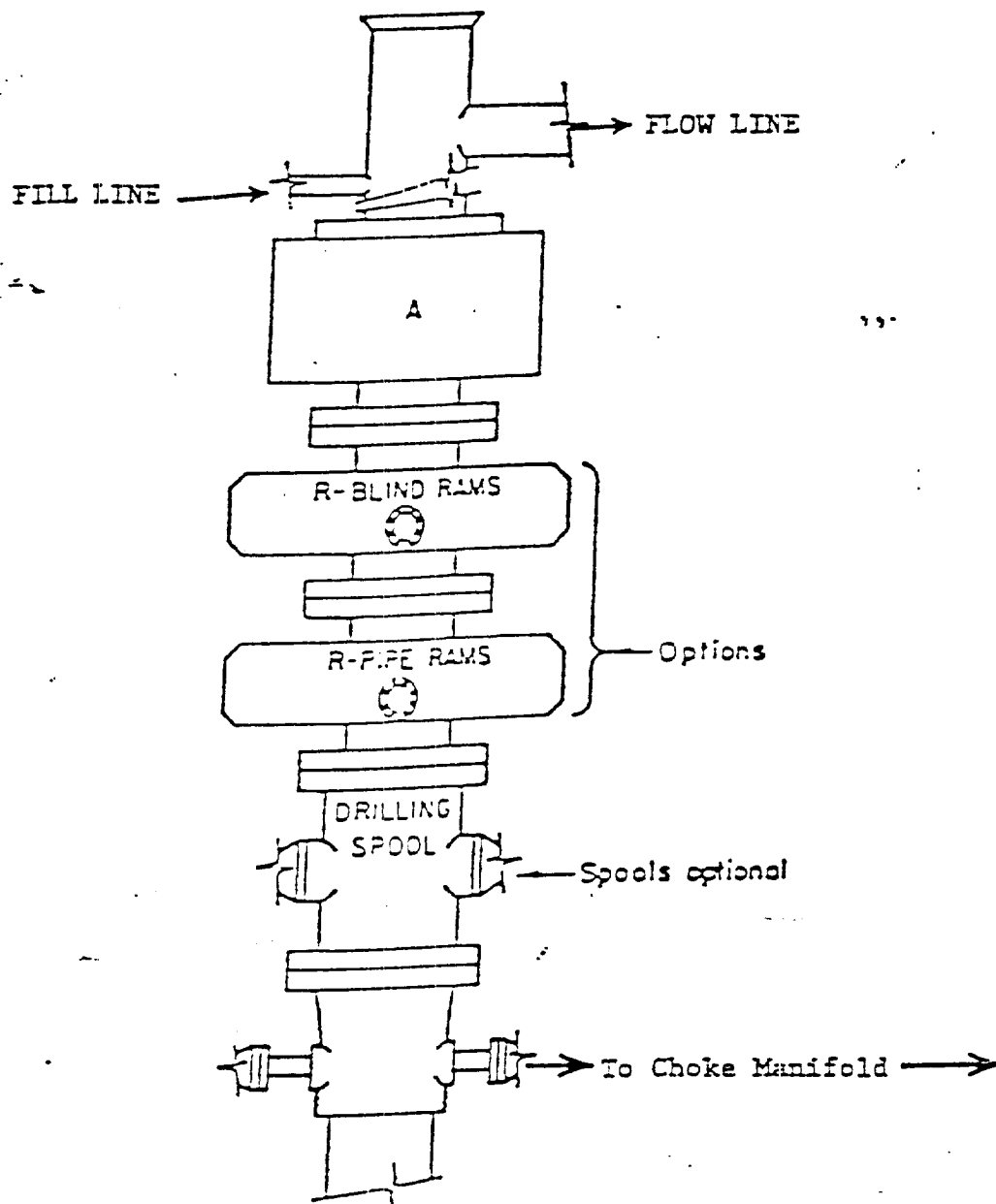
**(505) 393-3117**

This is a detailed topographic map of the Northeast Drinkard Unit #233. The map features contour lines indicating elevation, with labels such as 3475, 3479, 3478, 3472, 3476, 3469, 3464, 3450, 3500, 3503, 3509, 3520, and 3525. A dashed line represents the international border with the U.S. - NEW MEXICO. The map includes several labeled locations: Gravel Pits, Oil Wells, Carbon Plant, and a BM (Benchmark) at 3470. A dashed line outlines the unit boundary, and a solid line indicates a road or boundary. The map is overlaid with a grid of dashed lines.

CONTOUR INTERVAL:  
HOBBS SW - 5'

HOBBS SW, N.M.

**(505) 393-3117**



# ARRANGEMENT SRRA

900 Series  
3000 PSI WP