

**ATTACHMENT TO FORM 3160-3
MINIS 2 FEDERAL #1
3,630' FSL AND 660' FEL
SECTION 2, T21S, R32E
LEA COUNTY, NEW MEXICO**

DRILLING PROGRAM

1. GEOLOGIC NAME OF SURFACE FORMATION

Quaternary

2. ESTIMATED TOPS OF IMPORTANT GEOLOGIC MARKERS

Delaware	5,530'	Morrow	13,440'
Bone Spring	8,740'	TD	14,300'
Wolfcamp	11,600'		
Penn Shale	12,200'		
Strawn	12,800'		
Atoka	13,100'		

3. ESTIMATED DEPTHS OF ANTICIPATED FRESH WATER, OIL, OR GAS

Isolated Delaware Sands	Oil
Atoka	Gas
Morrow	Gas

4. CASING AND CEMENTING PROGRAM

Setting From Casing Size	From To	Weight	Grade	Joint
13-3/8"	0' – 500'	48#	H-40	ST&C
8-5/8"	0' – 2,000'	24#	K-55	ST&C
	2,000' – 4,000'	32#	K-55	ST&C
	4,400' – 5,500'	32#	K-55	ST&C
5-1/2"	0' – 4,200'	20#	N-80	LT&C
	4,200' – 8,400'	17#	N-80	LT&C
	8,400' – 14,300'	20#	N-80	LT&C

We plan to drill a 17-1/2" hole to equal 500'. 13-3/8" casing will be cemented with 500 sacks or volume to cement to surface.

12-1/4" hole will be drilled to 5,500' and 8-5/8" casing will be cemented with 2,500 sx or volume necessary to bring cement back to surface.

**MINIS 2 FEDERAL #1
DRILLING PROGRAM
PAGE 2**

7-7/8" hole will be drilled and 5-1/2" production casing will be cemented with approximately 500 sx of Class "H" 50/50 POZ.

5. MINIMUM SPECIFICATIONS FOR PRESSURE CONTROL

The BOP stack will consist of a 5,000 psi working pressure, dual ram type preventer and annular.

A BOP sketch is attached.

6. TYPES AND CHARACTERISTICS OF THE PROPOSED MUD SYSTEM

Spud and drill to 500' with fresh water mud for surface string. The intermediate section will be drilled with 10 ppg brine to 5,200'. The production section from 5,200' to 10,800' will be cut brine at 8.6 ppg, from 10,800' to 12,400' with 9 ppg cut brine, from 12,400' to 14,300' with Brine/Poly Pac/XCD system with mud weight sufficient to control formation pressures.

7. AUXILLARY WELL CONTROL AND MONITORING EQUIPMENT

None required.

8. LOGGING, TESTING, AND CORING PROGRAM

DLL/CNL/LDT/CAL/GR logging is planned. Drill stem tests, cores and sidewall cores are possible.

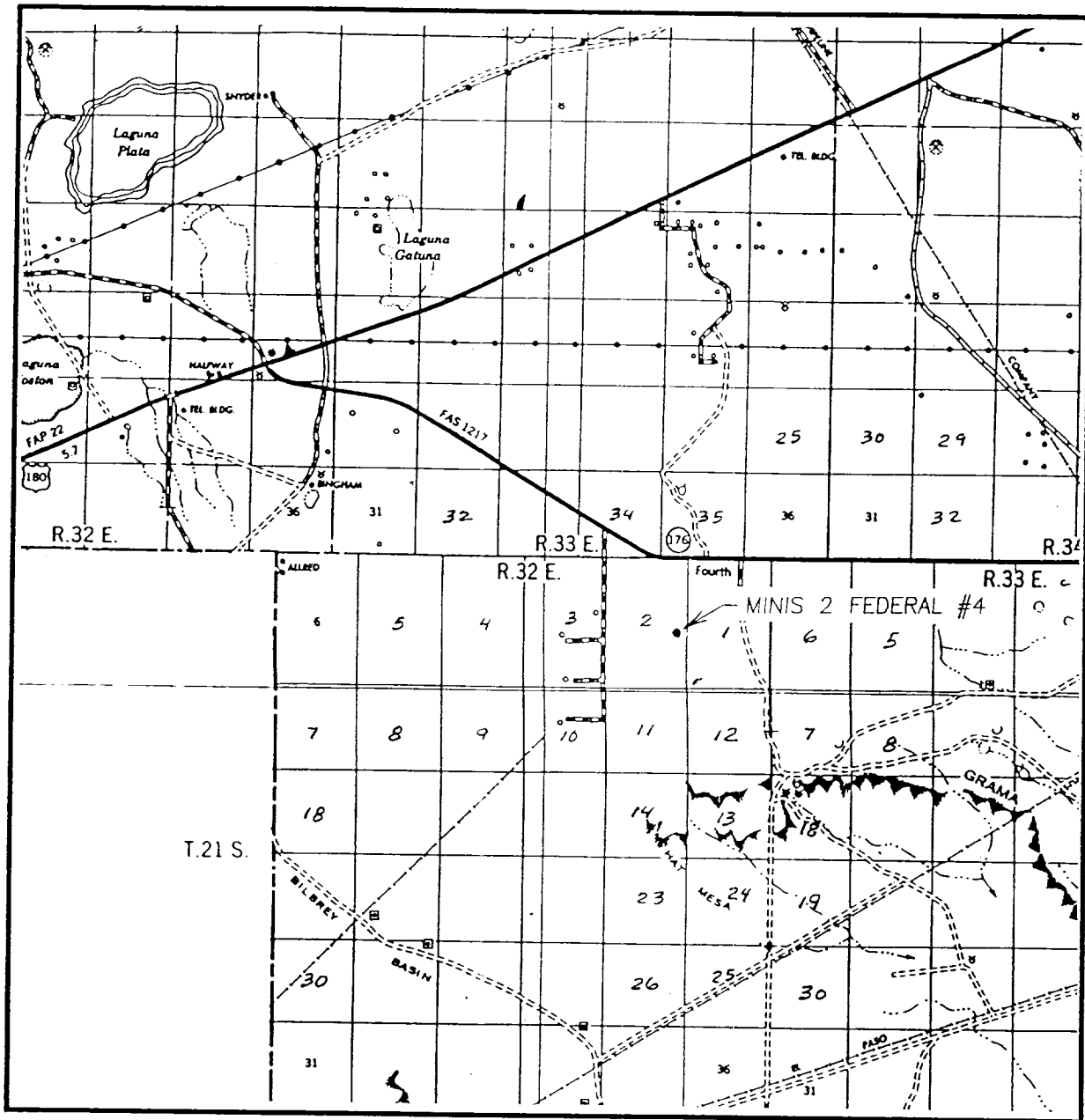
9. ABNORMAL CONDITIONS, PRESSURES, TEMPERATURES & POTENTIAL HAZARDS

Anticipated bottom hole pressure: 5,000 psi. Abnormal pressure is not anticipated.

10. ANTICIPATED STARTING DATE AND DURATION OF OPERATIONS

Road and location work will not begin until approval has been received from the BLM. The anticipated spud date is June 15, 1998. Once commenced, the drilling operation should be finished in approximately 45 days.

VICINITY MAP



SCALE: 1" = 2 MILES

SEC. 2 TWP. 21-S RGE. 32-E

SURVEY N.M.P.M.

COUNTY LEA

DESCRIPTION 3630' FSL & 660' FEL

ELEVATION 3465'

OPERATOR NEARBURG PRODUCING COMPANY

LEASE MINIS 2 FEDERAL

**JOHN WEST ENGINEERING
HOBBS, NEW MEXICO**

(505) 393.3117

Exhibit D
Topographic &
Location Verification Map

DISTRICT II
P.O. Drawer DD, Artesia, NM 88211-0719

DISTRICT III
1000 Rio Brazos Rd., Aztec, NM 87410

DISTRICT IV
P.O. BOX 2088, SANTA FE, N.M. 87504-2088

OIL CONSERVATION DIVISION
P.O. Box 2088

Santa Fe, New Mexico 87504-2088

C AMENDED REPORT

WELL LOCATION AND ACREAGE DEDICATION PLAT

API Number	Pool Code	Pool Name
	78240	Hat Mesa Morrow
Property Code	Property Name	Well Number
22946 23485	VINIS 2 FEDERAL	1
OGRID No.	Operator Name	Elevation
15742	NEARBURG PRODUCING COMPANY	3739'

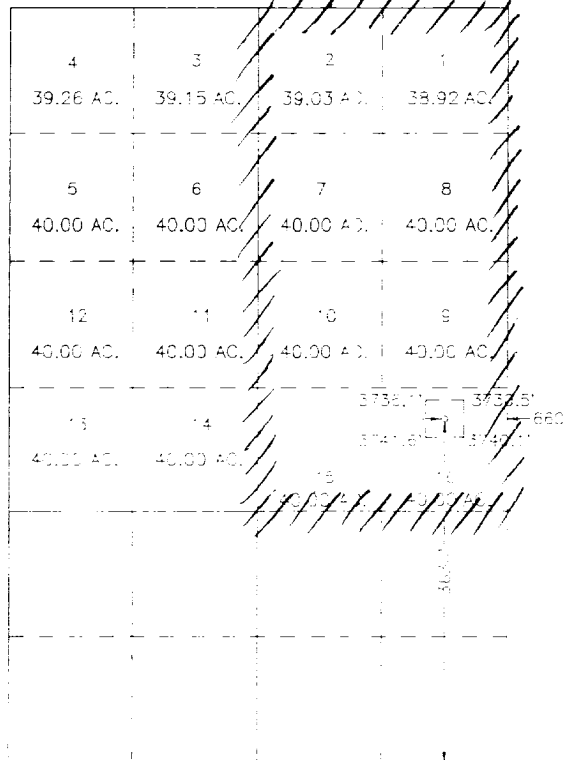
Surface Location

UL or lot No.	Section	Township	Range	Lot Idn	Feet from the	North/South line	Feet from the	East/West line	County
P	2	21 S	32 E		3630	SOUTH	660	EAST	LEA

Bottom Hole Location If Different From Surface

UL or lot No.	Section	Township	Range	Lot Idn	Feet from the	North/South line	Feet from the	East/West line	County
Dedicated Acres 317.95	Joint or Infill N	Consolidation Code			Order No.				

NO ALLOWABLE WILL BE ASSIGNED TO THIS COMPLETION UNTIL ALL INTERESTS HAVE BEEN CONSOLIDATED
OR A NON-STANDARD UNIT HAS BEEN APPROVED BY THE DIVISION



SCA 5

OPERATOR CERTIFICATION

I hereby certify the the information
contained herein is true and complete to the
best of my knowledge and belief.

Signature _____

E. SCOTT KIMBROUGH

Printed Name _____

MANAGER OF DRUG PROD
Title / /

Date 3/16/98

SURVEYOR CERTIFICATION

I hereby certify that the well location shown on this plat was plotted from field notes of actual surveys made by me or under my supervision, and that the same is true and correct to the best of my belief.

ARCH - 12. 1998

Date Surfered 11/10/07 CDG

Signature & Seal of
Professional Surveyor

Ronald E. Eulson 3-12-98

Certificate No. 100-11004 11004

ELF
1/19/99
ABOVE DATE DOES NOT
INDICATE WHEN
CONFIDENTIAL LOGS
WILL BE RELEASED