

District I  
P. O. Box 1980, Hobbs, NM 88241-1980  
District II  
P. O. Drawer DD, Artesia, NM 88211-0719  
District III  
1000 Rio Brazos Rd., Aztec, NM 87410  
District IV  
P. O. Box 2088, Santa Fe, NM 87504-2088

State of New Mexico  
Energy, Minerals & Natural Resources Department

OIL CONSERVATION DIVISION

P. O. Box 2088  
Santa Fe, NM 87504-2088

Form C-101

Revised February 10, 1994

Instructions on back

Submit to Appropriate District Office

State Lease - 6 Copies

Fee Lease - 5 Copies

☐ AMENDED REPORT

APPLICATION FOR PERMIT TO DRILL, RE-ENTER, DEEPEN, PLUGBACK, OR ADD A ZONE

<sup>1</sup> Operator Name and Address. <b>Apache Corporation</b> c/o J. O. Easley, Inc. P. O. Box 245 Artesia, NM 88211-0245		<sup>2</sup> OGRID Number 873
<sup>4</sup> Property Code 22880	<sup>5</sup> Property Name Turner	<sup>3</sup> API Number 30-025-34493
		<sup>6</sup> Well No. 19

<sup>7</sup> Surface Location

UL or lot no.	Section	Township	Range	Lot Idn	Feet from the	North/South Line	Feet from the	East West line	County
J	22	21S	37E		1650	South	1420	East	Lea

<sup>8</sup> Proposed Bottom Hole Location If Different From Surface

UL or lot no.									
<sup>9</sup> Proposed Pool 1 Paddock (49210)					<sup>10</sup> Proposed Pool 2				

<sup>11</sup> Work Type Code N	<sup>12</sup> Well Type Code O	<sup>13</sup> Cable Rotary R	<sup>14</sup> Lease Type Code P	<sup>15</sup> Ground Level Elevation 3402'
<sup>16</sup> Multiple	<sup>17</sup> Proposed Depth 5400'	<sup>18</sup> Formation Paddock	<sup>19</sup> Contractor	<sup>20</sup> Spud Date ASAP

<sup>21</sup> Proposed Casing and Cement Program

Hole size	Casing Size	Casing weight/foot	Setting Depth	Sacks of Cement	Estimated TOC
11"	8 5/8"	24# J-55 STC	400'	150 sxs PBCZ	circulate to surf
7 7/8"	5 1/2"	17# K-55 LTC	5400'	360 sxs Hal. Lt.	circulate to surf
				+350 sxs 50/50	
				Poz Perm.	

<sup>22</sup> Describe the proposed program. If this application is to DEEPEN or PLUG BACK give the data on the present productive zone and proposed new productive zone. Describe the blowout prevention program, if any. Use additional sheets if necessary.

Propose to drill 11" hole to 400', run & set 400' of 8 5/8" and circulate cement to surface.

Drill 7 7/8" hole to 5400', run & set 5400' of 5 1/2" and circulate cement to surface.

Blow Out Prevention: See attached copy

Permit Expires 1 Year From Approval  
Date Unless Drilling Underway

<sup>23</sup> I hereby certify that the information given above is true and complete to the best of my knowledge and belief. Signature: <i>Michael R. Burch</i> Printed name: Michael R. Burch, CPL Title: Agent for Apache Corporation Date: 8-3-98		<b>OIL CONSERVATION DIVISION</b> Approved by: <i>[Signature]</i> Title: <i>[Signature]</i> Approval Date: <b>AUG 23 1998</b> Expiration Date: Conditions of Approval: Attached <input type="checkbox"/>	
Phone: 505-746-1070			

3  
C  
3

*[Handwritten initials]*

DISTRICT I  
P.O. Box 1980, Hobbs, NM 88241-1980

State of New Mexico  
Energy, Minerals and Natural Resources Department

Form C-102  
Revised February 10, 1994  
Submit to Appropriate District Office  
State Lease - 4 Copies  
Fee Lease - 3 Copies

DISTRICT II  
P.O. Drawer DD, Artesia, NM 88211-0719

DISTRICT III  
1000 Rio Brazos Rd., Aztec, NM 87410

DISTRICT IV  
P.O. BOX 2088, SANTA FE, N.M. 87504-2088

OIL CONSERVATION DIVISION

P.O. Box 2088  
Santa Fe, New Mexico 87504-2088

☐ AMENDED REPORT

WELL LOCATION AND ACREAGE DEDICATION PLAT

API Number <b>30-025- 34493</b>	Pool Code <b>49210</b>	Pool Name <b>Paddock</b>
Property Code <b>22880</b>	Property Name <b>TURNER</b>	Well Number <b>19</b>
OGRID No. <b>873</b>	Operator Name <b>APACHE CORPORATION</b>	Elevation <b>3402</b>

Surface Location

UL or lot No.	Section	Township	Range	Lot Idn	Feet from the	North/South line	Feet from the	East/West line	County
J	22	21 S	37 E		1650	SOUTH	1420	EAST	LEA

Bottom Hole Location If Different From Surface

UL or lot No.	Section	Township	Range	Lot Idn	Feet from the	North/South line	Feet from the	East/West line	County
Dedicated Acres <b>40</b>	Joint or Infill	Consolidation Code	Order No.						

NO ALLOWABLE WILL BE ASSIGNED TO THIS COMPLETION UNTIL ALL INTERESTS HAVE BEEN CONSOLIDATED  
OR A NON-STANDARD UNIT HAS BEEN APPROVED BY THE DIVISION

	<b>OPERATOR CERTIFICATION</b>  I hereby certify the the information contained herein is true and complete to the best of my knowledge and belief.   Signature  Michael R. Burch, CPL Printed Name Agent for Apache Corp. Title 8-3-98 Date
	<b>SURVEYOR CERTIFICATION</b>  I hereby certify that the well location shown on this plat was plotted from field notes of actual surveys made by me or under my supervision, and that the same is true and correct to the best of my belief.  JULY 29, 1998 Date Surveyed Signature & Seal of Professional Surveyor  7-31-98 Certificate No. RONALD J. EIDSON 3239 DAN EIDSON 12641 WACON McDONALD 12185

DISTRICT I  
P.O. Box 1980, Hobbs, NM 88241-1980

DISTRICT II  
P.O. Drawer DD, Artesia, NM 88211-0719

DISTRICT III  
1000 Rio Brazos Rd., Aztec, NM 87410

DISTRICT IV  
P.O. BOX 2088, SANTA FE, N.M. 87504-2088

State of New Mexico  
Energy, Minerals and Natural Resources Department

Form C-102  
Revised February 10, 1994  
Submit to Appropriate District Office  
State Lease - 4 Copies  
Fee Lease - 3 Copies

OIL CONSERVATION DIVISION

P.O. Box 2088  
Santa Fe, New Mexico 87504-2088

☐ AMENDED REPORT

WELL LOCATION AND ACREAGE DEDICATION PLAT

API Number <b>30-025-34493</b>	Pool Code <b>49210</b>	Pool Name <b>Paddock</b>
Property Code <b>22880</b>	Property Name <b>TURNER</b>	Well Number <b>19</b>
OGRID No. <b>873</b>	Operator Name <b>APACHE CORPORATION</b>	Elevation <b>3402</b>

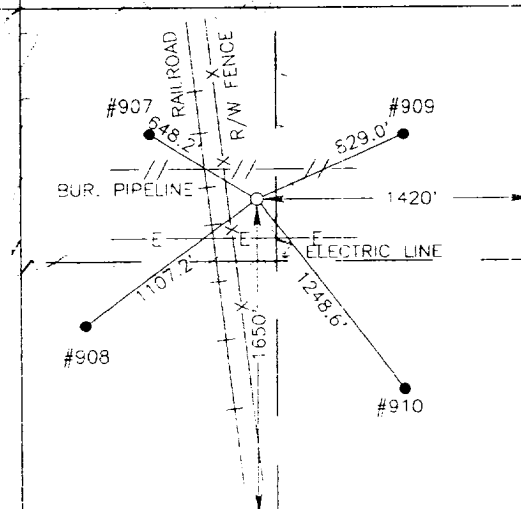
Surface Location

UL or lot No.	Section	Township	Range	Lot Idn	Feet from the	North/South line	Feet from the	East/West line	County
J	22	21 S	37 E		1650	SOUTH	1420	EAST	LEA

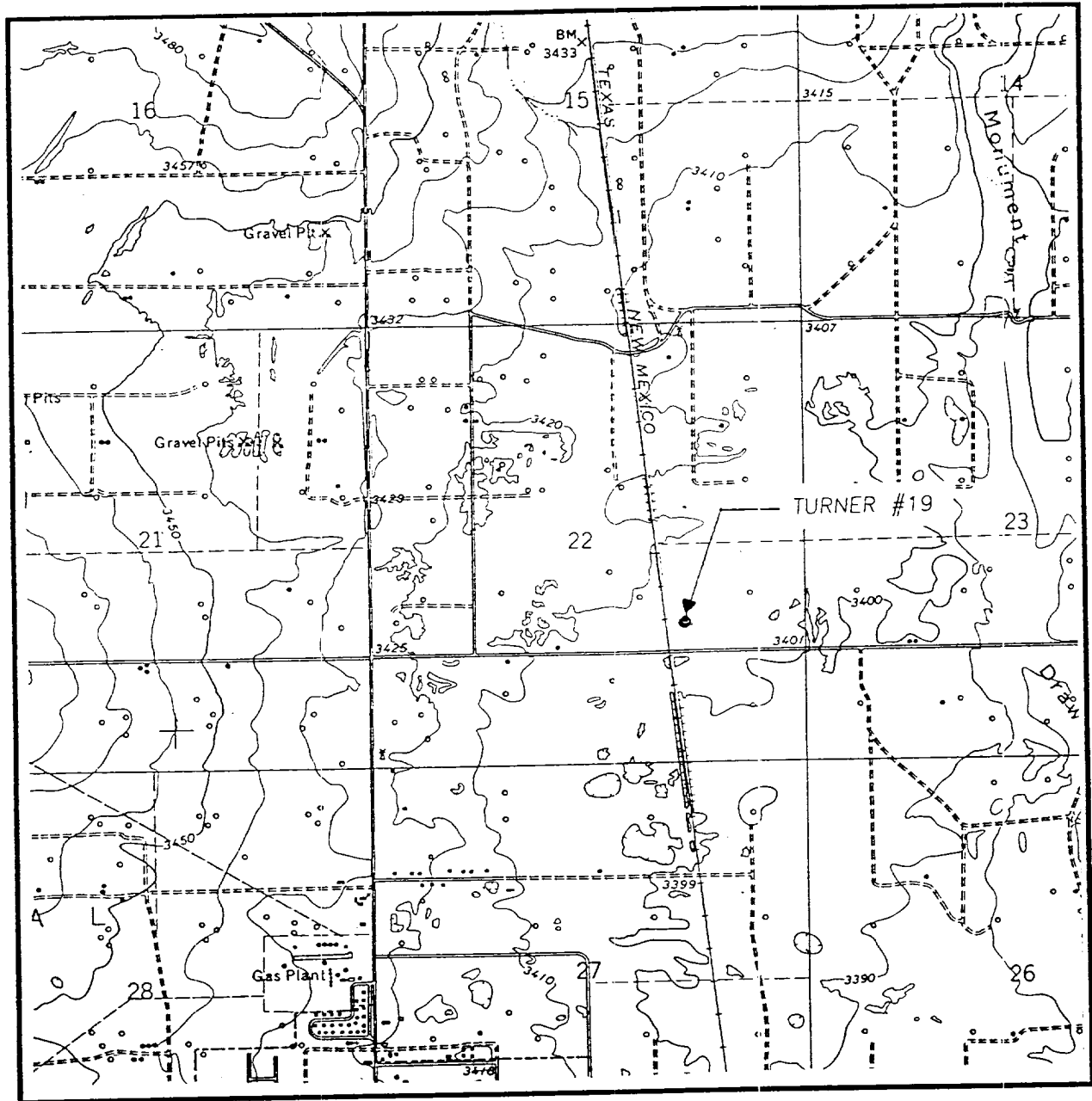
Bottom Hole Location If Different From Surface

UL or lot No.	Section	Township	Range	Lot Idn	Feet from the	North/South line	Feet from the	East/West line	County
Dedicated Acres		Joint or Infill		Consolidation Code		Order No.			

NO ALLOWABLE WILL BE ASSIGNED TO THIS COMPLETION UNTIL ALL INTERESTS HAVE BEEN CONSOLIDATED  
OR A NON-STANDARD UNIT HAS BEEN APPROVED BY THE DIVISION

	<b>OPERATOR CERTIFICATION</b>  <i>I hereby certify that the information contained herein is true and complete to the best of my knowledge and belief.</i>  Signature _____  Printed Name _____  Title _____  Date _____
	<b>SURVEYOR CERTIFICATION</b>  <i>I hereby certify that the well location shown on this plat was plotted from field notes of actual surveys made by me or under my supervision, and that the same is true and correct to the best of my belief.</i>  JULY 29, 1998  Date Surveyed _____ DMCC  Signature & Seal of Professional Surveyor _____
	98-11-1088
	Certificate No. RONALD J. EIDSON 3239 GARY EIDSON 12641 MACON McDONALD 12185

# LOCATION VERIFICATION MAP



SCALE: 1" = 2000'

CONTOUR INTERVAL:  
EUNICE - 10'

SEC. 22 TWP. 21-S RGE. 37-E

SURVEY N.M.P.M.

COUNTY LEA

DESCRIPTION 1650' FSL & 1420' FEL

ELEVATION 3402

OPERATOR APACHE CORPORATION

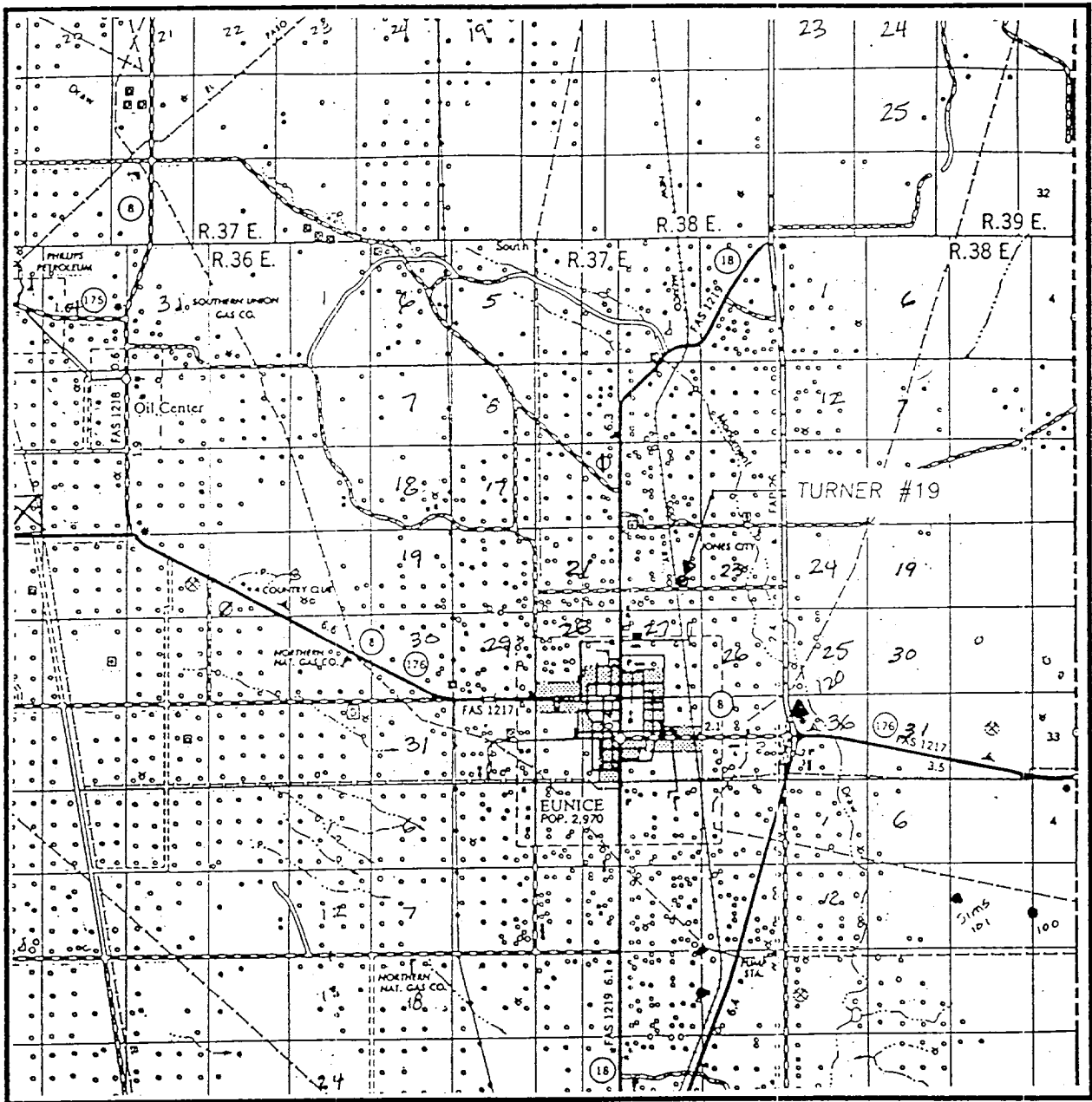
LEASE TURNER

U.S.G.S. TOPOGRAPHIC MAP

EUNICE, N.M.

**JOHN WEST ENGINEERING**  
**HOBBS, NEW MEXICO**  
**(505) 393-3117**

# VICINITY MAP



SCALE: 1" = 2 MILES

SEC. 22 TWP. 21-S RGE. 37-E

SURVEY N.M.P.M.

COUNTY LEA

DESCRIPTION 1650' FSL & 1420' FEL

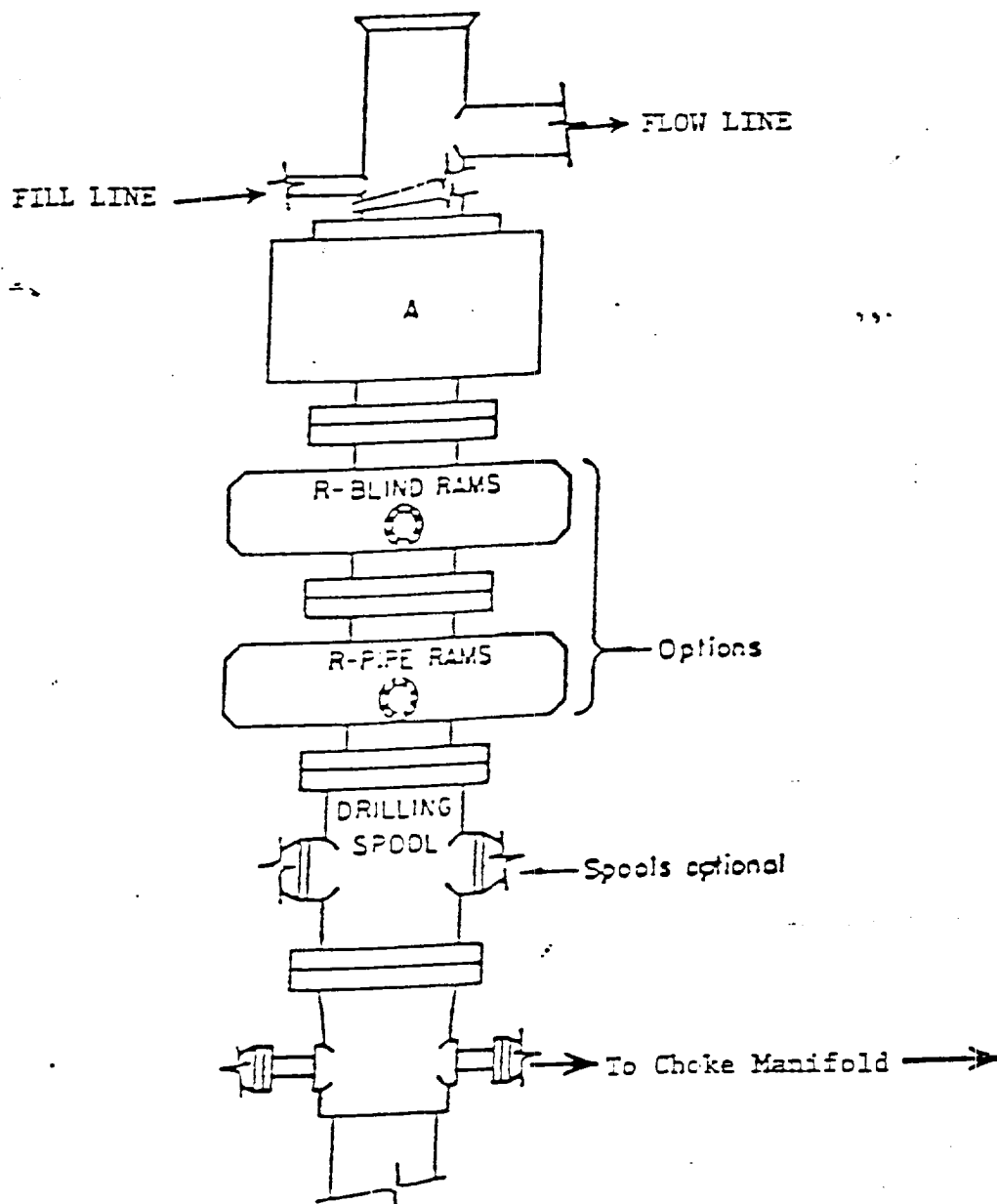
ELEVATION 3402

OPERATOR APACHE CORPORATION

LEASE TURNER

**JOHN WEST ENGINEERING**  
**HOBBS, NEW MEXICO**

**(505) 393-3117**



# ARRANGEMENT SRRA

900 Series  
3000 PSI WP