

District I
PO Box 1960, Hobbs, NM 88241-1980

District II
811 South First, Artesia, NM 88210

District III
1000 Rio Brazos Rd., Aztec, NM 87410

District IV
2040 South Pacheco, Santa Fe, NM 87505

State of New Mexico
Energy, Minerals & Natural Resources Department

OIL CONSERVATION DIVISION
2040 South Pacheco
Santa Fe, NM 87505

Form C-101
Revised October 18, 1994
Instructions on back
Submit to Appropriate District Office
State Lease - 6 Copies
Fee Lease - 5 Copies

AMENDED REPORT

APPLICATION FOR PERMIT TO DRILL, RE-ENTER, DEEPEN, PLUGBACK, OR ADD A ZONE

¹ Operator Name and Address TITAN RESOURCES I, INC. 500 W. TEXAS, STE 500 MIDLAND, TEXS 79701		² OGRID Number 150661
		³ API Number 30 - 0 25 - 2010
⁴ Property Code 	⁵ Property Name STATE DC	⁶ Well No. 4

⁷Surface Location

UL or lot no.	Section	Township	Range	Lot Idn	Feet from the	North/South line	Feet from the	East/West Line	County
2	19	21S	37E		1880	N	660	W	LEA

⁸Proposed Bottom Hole Location If Different From Surface

UL or lot no.	Section	Township	Range	Lot Idn	Feet from the	North/South line	Feet from the	East/West Line	County
⁹ Proposed Pool 1 WANTZ (ABO)					¹⁰ Proposed Pool 2				

¹¹ Work Type Code N	¹² Well Type Code O	¹³ Cable/Rotary R	¹⁴ Lease Type Code P	¹⁵ Ground Level Elevation 3520
¹⁶ Multiple No	¹⁷ Proposed Depth 7200	¹⁸ Formation ABO	¹⁹ Contractor KEY ENERGY	²⁰ Spud Date 10-7-98

²¹Proposed Casing and Cement Program

Hole Size	Casing Size	Casing weight/foot	Setting Depth	Sacks of Cement	Estimated TOC
11"	8 5/8"	24#	1200	250	SURFACE
7 7/8"	5 1/2"	17	7200	950	SURFACE

²²Describe the proposed program. If this application is to DEEPEN or PLUG BACK give the data on the present productive zone and proposed new productive zone. Describe the blowout prevention program, if any. Use additional sheets if necessary.

DRILL 12 1/4" HOLE TO 1200'; RUN 8 5/8" CSG TO 1200' & CMT W/ 520 SX.
WOC 18 HRS. TEST BOP & CSG TO 1000 PSI PRIOR TO DRILL OUT
DRILL 7 7/8" HOLE TO TD. RUN 5 1/2" CASING TO TD. RUN DV TOOL INCSG STRING @ 4500'; CMT W/ 950 SX.
BOP EQUIPMENT: DOUBLE RAM, 3000 PSI W.P. FROM UNDER SURFACE CSG TO TD.

Haylie Urias

²³I hereby certify that the information given above is true and complete to the best of my knowledge and belief.

Signature: *Haylie Urias*

Printed name: HAYLIE URIAS

Title: OPERATIONS TECH

OIL CONSERVATION DIVISION

Approved By: *[Signature]*

Title: *[Signature]*

Approval Date: *3/20/98* Expiration Date:

MAT

DISTRICT I
P.O. Box 1990, Hobbs, NM 88241-1990

State of New Mexico
Energy, Minerals and Natural Resources Department

Form C-102
Revised February 10, 1994
Submit to Appropriate District Office
State Lease - 4 Copies
Fee Lease - 3 Copies

DISTRICT II
P.O. Drawer DD, Artesia, NM 88211-0719

DISTRICT III
1000 Rio Brazos Rd., Aztec, NM 87410

OIL CONSERVATION DIVISION
P.O. Box 2088

Santa Fe, New Mexico 87504-2088

DISTRICT IV
P.O. BOX 2088, SANTA FE, N.M. 87504-2088

AMENDED REPORT

WELL LOCATION AND ACREAGE DEDICATION PLAT

API Number 30-005-38510	Pool Code	Pool Name WANTZ (ABO)
Property Code 23700	Property Name STATE DC	Well Number 4
OGRID No. 150661	Operator Name TITAN RESOURCES, L.P.	Elevation 3520'

Surface Location

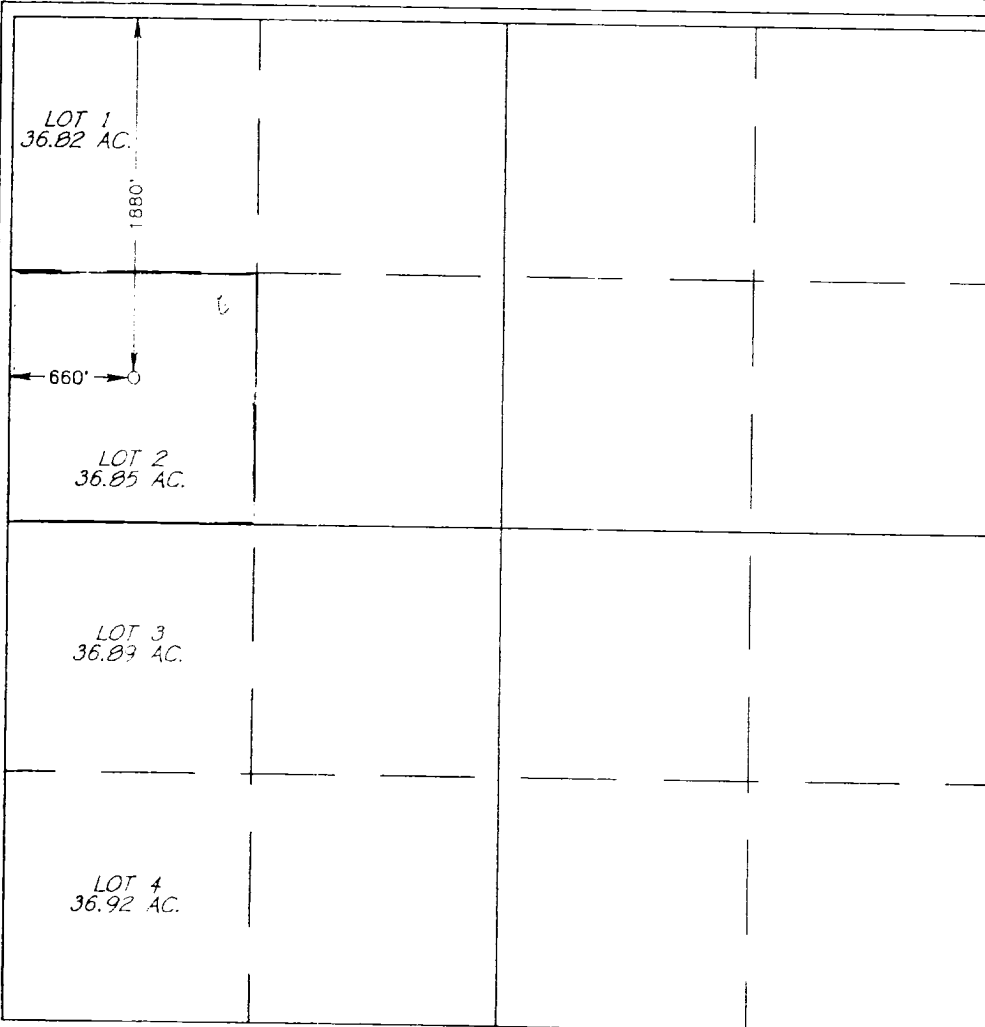
UL or lot No.	Section	Township	Range	Lot Idn	Feet from the	North/South line	Feet from the	East/West line	County
2	19	21 S	37 E		1880	NORTH	660	WEST	LEA

Bottom Hole Location If Different From Surface

UL or lot No.	Section	Township	Range	Lot Idn	Feet from the	North/South line	Feet from the	East/West line	County

Dedicated Acres 40	Joint or Infill	Consolidation Code	Order No.
-----------------------	-----------------	--------------------	-----------

NO ALLOWABLE WILL BE ASSIGNED TO THIS COMPLETION UNTIL ALL INTERESTS HAVE BEEN CONSOLIDATED OR A NON-STANDARD UNIT HAS BEEN APPROVED BY THE DIVISION



OPERATOR CERTIFICATION

I hereby certify that the information contained herein is true and complete to the best of my knowledge and belief.

Haylie Urias
Signature

Haylie Urias
Printed Name

Operations Tech.
Title

9-21-98
Date

SURVEYOR CERTIFICATION

I hereby certify that the well location shown on this plat was plotted from field notes of actual surveys made by me or under my supervision and that the same is true and correct to the best of my belief.

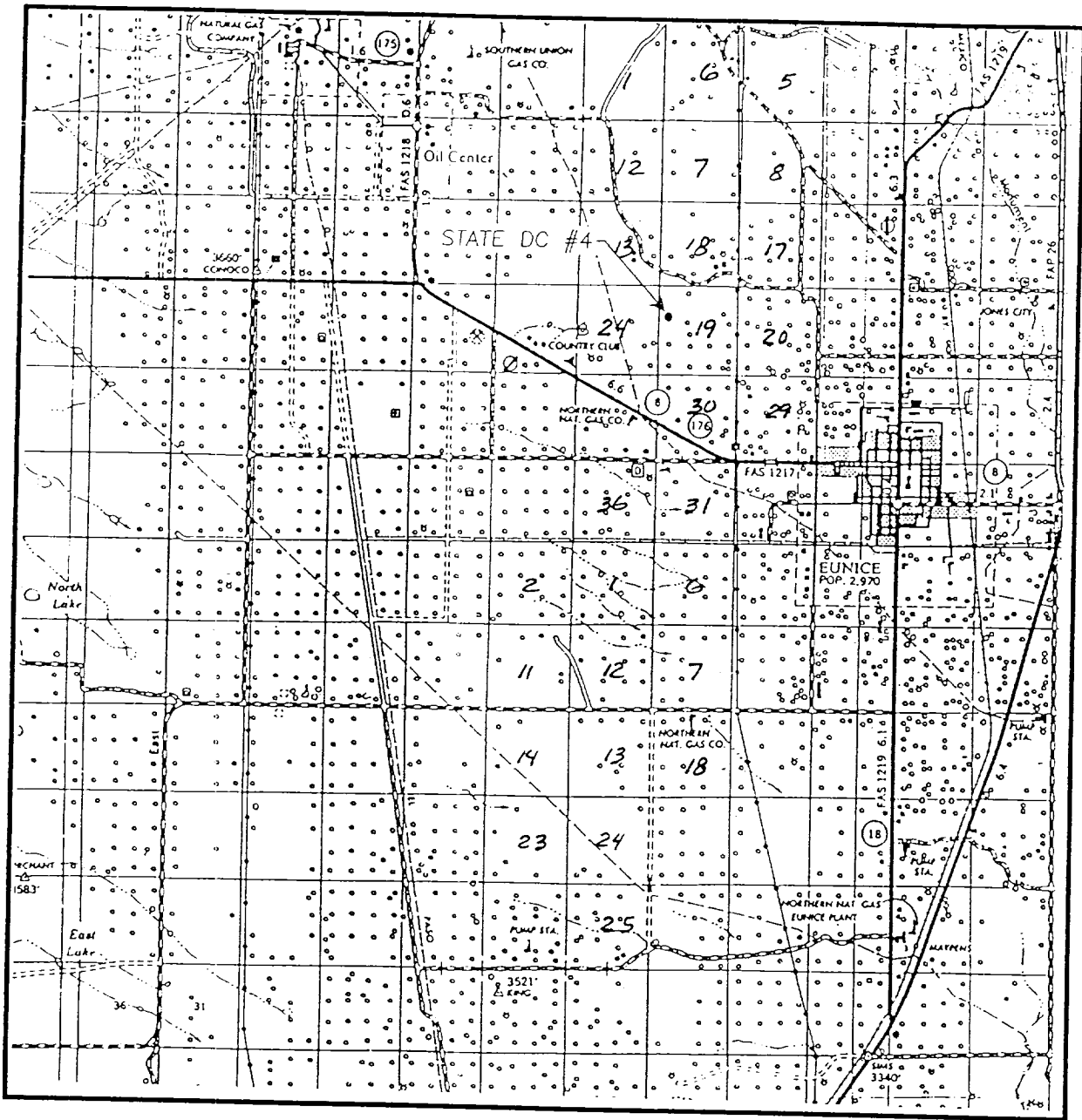
SEPTEMBER 17, 1998
Date Surveyed

Michael J. Eidson
Signature & Seal of Professional Surveyor

3239
98-11-1288
CERTIFIED PROFESSIONAL SURVEYOR

Certification No. EIDSON 3239
12641

VICINITY MAP

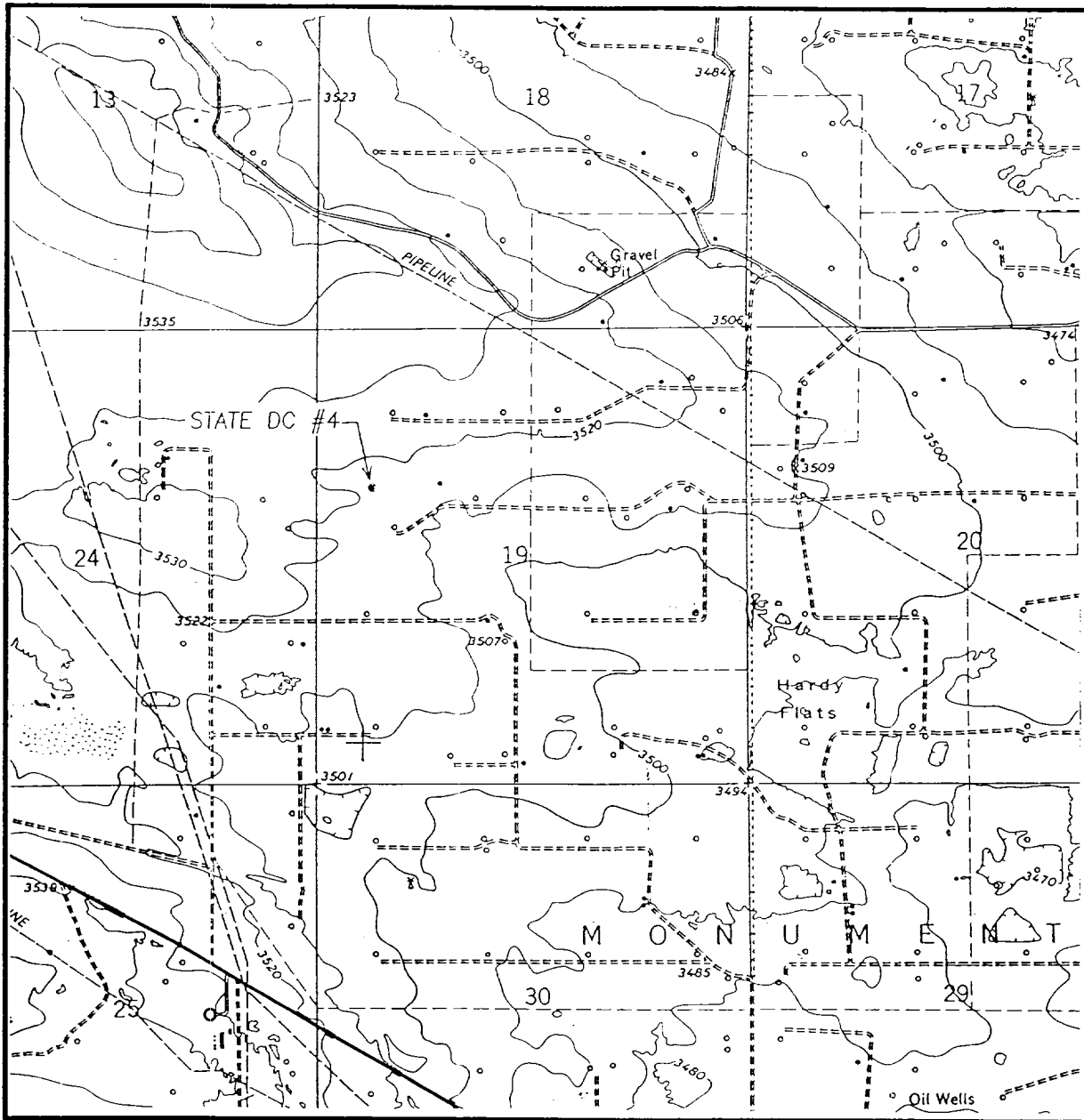


SCALE: 1" = 2 MILES

SEC. 19 TWP. 21-S RGE. 37-E
 SURVEY N.M.P.M.
 COUNTY LEA
 DESCRIPTION 1880' FNL & 660' FWL
 ELEVATION 3520'
 OPERATOR TITAN RESOURCES, L.P.
 LEASE STATE DC

JOHN WEST ENGINEERING
HOBBS, NEW MEXICO
(505) 393-3117

LOCATION VERIFICATION MAP



SCALE: 1" = 2000'

CONTOUR INTERVAL - 10'

SEC. 19 TWP. 21-S RGE. 37-E

SURVEY N.M.P.M.

COUNTY LEA

DESCRIPTION 1880' FNL & 660' FWL

ELEVATION 3520'

OPERATOR TITAN RESOURCES, L.P.

LEASE STATE DC

U.S.G.S. TOPOGRAPHIC MAP

EUNICE, NM

**JOHN WEST ENGINEERING
HOBBS, NEW MEXICO**

(505) 393-3117