

District  
P.O. Box 1980, Hobbs, NM 88241-1980  
District II  
811 South First, Artesia, NM 88210  
District III  
1000 R o Brazos Rd., Aztec, NM 87410  
District IV  
2040 South Pacheco, Santa Fe, NM 87505

State of New Mexico  
Energy, Minerals & Natural Resources Department

OIL CONSERVATION DIVISION  
2040 South Pacheco  
Santa Fe, NM 87505

Form C-101  
Revised October 18, 1994  
Instructions on back  
Submit to Appropriate District Office  
State Lease - 6 Copies  
Fee Lease - 5 Copies

☐ AMENDED REPORT

APPLICATION FOR PERMIT TO DRILL, RE-ENTER, DEEPEN, PLUGBACK, OR ADD A ZONE

1 Operator Name and Address Apache Corporation 2000 Post Oak Blvd. Ste. 100 Houston, Texas 77056-4400		2 OGRID Number 873
		3 API Number 30-025- 34651
4 Property Code 22503	5 Property Name Northeast Drinkard Unit	6 Well No. 128

7 Surface Location

UL o' lot no.	Section	Township	Range	Lot Idn	Feet from the	North/South Line	Feet from the	East/West Line	County
5	3	21-S	37-E		2483	North	1277	West	Lea

8 Proposed Bottom Hole Location If Different From Surface

UL o' lot no.	Section	Township	Range	Lot Idn	Feet from the	North/South Line	Feet from the	East/West Line	County

9 Proposed Pool 1 Eunice; Blinebry-Tubb-Drinkard, North	10 Proposed Pool 2
--	--------------------

11 Work Type Code N	12 Well Type Code O	13 Cable/Rotary R	14 Lease Type Code P	15 Ground Level Elevation 3476KB
16 Multiple	17 Proposed Depth 7000'	18 formation Blinebry/Drinkard	19 Contractor ASAP	20 Spud Date

21 Proposed Casing and Cement Program

Hole Size	Casing Size	Casing weight/foot	Setting Depth	Sacks of Cement	Estimated TOC
12 1/4"	8 5/8"	24# K55 STC	1365' or Anhydrite Form.	480 sxs PBCZ	Circulate to Surf
7 7/8"	5 1/2"	17# K55 LTC	7000'	870 sxs Hal. Interfill "C"	Circulate to Surf
				+455 sxs 50/50	
				Pozmix	

22 Describe the proposed program. If this application is to DEEPEN or PLUG BACK give the data on the present productive zone and proposed new productive zone. Describe the blowout prevention program, if any. Use additional sheets if necessary.

Propose to drill 12 1/4" hole to 1365', run & set 1365' of 8 5/8" and cement, circulate to surface

Drill 7 7/8" hole to 7000', run & set 7000' of 5 1/2" and cement, (Caliper + 20%), circulate to surface.

Blow Out Prevention: See attached copy

**Permit Expires 1 Year From Approval  
Date Unless Drilling Underway**

23 I hereby certify that the information given above is true and complete to the best of my knowledge and belief.

Signature:

Printed Name: Everett Ouizts

Title: Engineering Technician

Date: 06/28/99

Phone: 915-631-3733

OIL CONSERVATION DIVISION

Approved by: ORIGINAL SIGNED BY CHRIS WILLIAMS  
DISTRICT I SUPERVISOR

Title:

Approval Date:

Expiration Date:

Conditions on Approval:

503

51  
CP

DISTRICT I  
P.O. Box 1980, Hobbs, NM 88241-1980

DISTRICT II  
P.O. Drawer DD, Artesia, NM 88211-0719

DISTRICT III  
1000 Rio Brazos Rd., Aztec, NM 87410

DISTRICT IV  
P.O. BOX 2088, SANTA FE, N.M. 87504-2088

State of New Mexico  
Energy, Minerals and Natural Resources Department

Form C-102  
Revised February 10, 1994  
Submit to Appropriate District Office  
State Lease - 4 Copies  
Fee Lease - 3 Copies

OIL CONSERVATION DIVISION

P.O. Box 2088  
Santa Fe, New Mexico 87504-2088

☐ AMENDED REPORT

WELL LOCATION AND ACREAGE DEDICATION PLAT

API Number <b>30-025-34251</b>	Pool Code <b>22900</b>	Pool Name <b>Eunice; Blinebry-Tubb-Drinkard, North</b>
Property Code <b>22503</b>	Property Name <b>NEDU</b>	Well Number <b>128</b>
GRID No. <b>873</b>	Operator Name <b>APACHE CORPORATION</b>	Elevation <b>3476'</b>

Surface Location

UL or lot No.	Section	Township	Range	Lot Idn	Feet from the	North/South line	Feet from the	East/West line	County
LOT 5	3	21 S	37 E		2483	NORTH	1277	WEST	LEA

Bottom Hole Location If Different From Surface

UL or lot No.	Section	Township	Range	Lot Idn	Feet from the	North/South line	Feet from the	East/West line	County
Dedicated Acres	Joint or Infill	Consolidation Code	Order No.						

NO ALLOWABLE WILL BE ASSIGNED TO THIS COMPLETION UNTIL ALL INTERESTS HAVE BEEN CONSOLIDATED  
OR A NON-STANDARD UNIT HAS BEEN APPROVED BY THE DIVISION

LOT 4 37.86 ACRES	LOT 3 37.75 ACRES	LOT 2 37.63 ACRES	LOT 1 37.52 ACRES
LOT 5 40 ACRES	LOT 6 40 ACRES	LOT 7 40 ACRES	LOT 8 40 ACRES
LOT 12 40 ACRES	LOT 11 40 ACRES	LOT 10 40 ACRES	LOT 9 40 ACRES
LOT 13 40 ACRES	LOT 14 40 ACRES	LOT 15 40 ACRES	LOT 16 40 ACRES

1/4 CORNER

1/4 CORNER

N.M. STATE PLANE COORDINATE  
EAST ZONE  
NAD 27  
Y - 553189.8  
X - 863276.2

OPERATOR CERTIFICATION

I hereby certify the the information contained herein is true and complete to the best of my knowledge and belief.

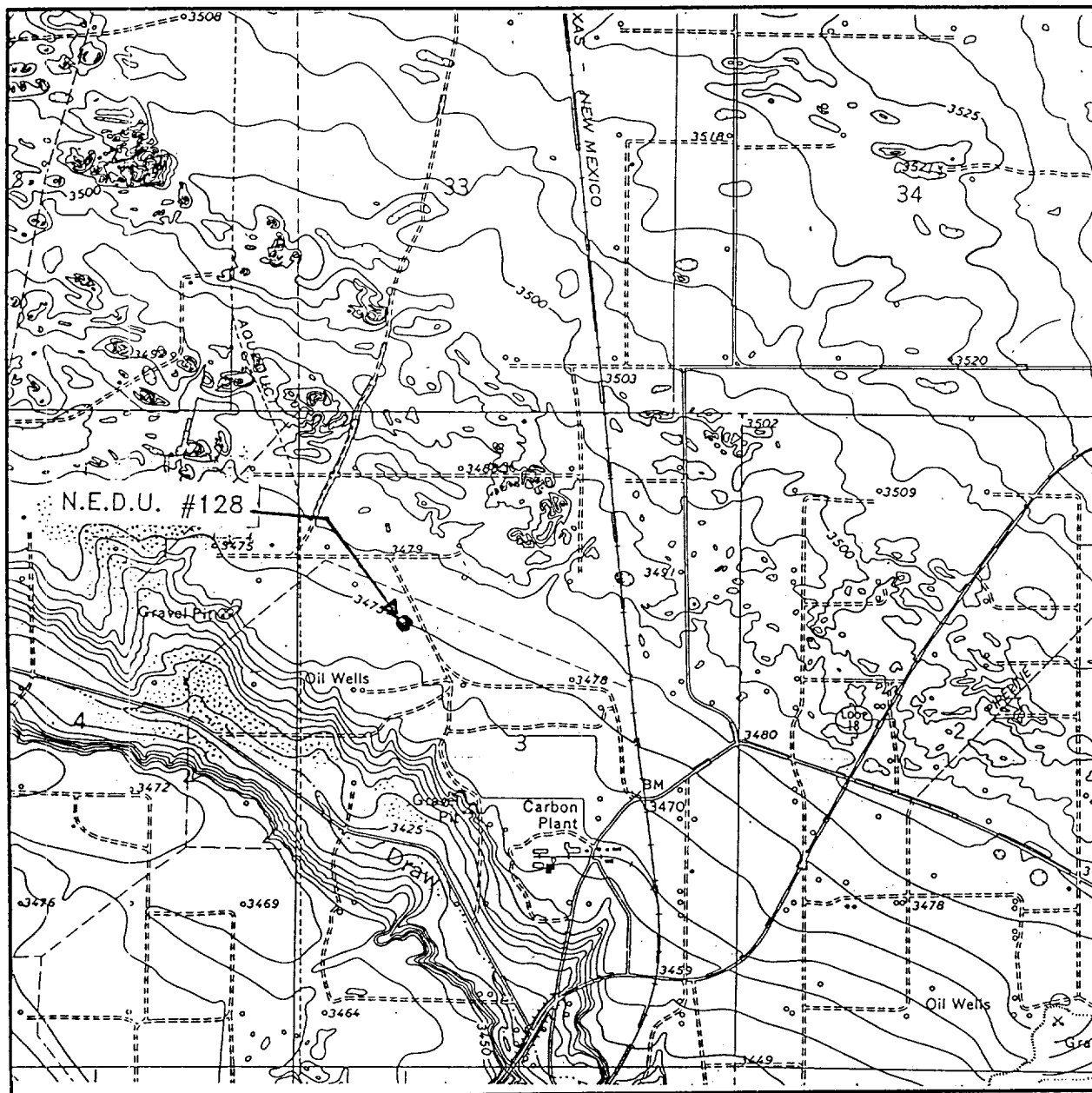
**Everett Ouzts**  
Signature  
Everett Ouzts  
Printed Name  
Eng. Tech.  
Title  
6/28/99  
Date

SURVEYOR CERTIFICATION

I hereby certify that the well location shown on this plat was plotted from field notes of actual surveys made by me or under my supervision, and that the same is true and correct to the best of my belief.

JUNE 28 1999  
Date Surveyed  
Signature & Seal of Professional Surveyor  
GARY G. EDSON  
12641  
1-0526  
Certificate No. 12641

# LOCATION VERIFICATION MAP



SCALE: 1" = 2000'

CONTOUR INTERVAL - 5'

SEC. 3 TWP. 21-S RGE. 37-E

SURVEY N.M.P.M.

COUNTY LEA

DESCRIPTION 2483' FNL & 1277' FWL

ELEVATION 3476'

OPERATOR APACHE CORPORATION

LEASE N.E.D.U.

U.S.G.S. TOPOGRAPHIC MAP

HOBBS SW, N.M.

**JOHN WEST SURVEYING CO.**  
**HOBBS, NEW MEXICO**  
**(505) 393-3117**



AA

1

1

—

1

1

**(505) 393-3117**

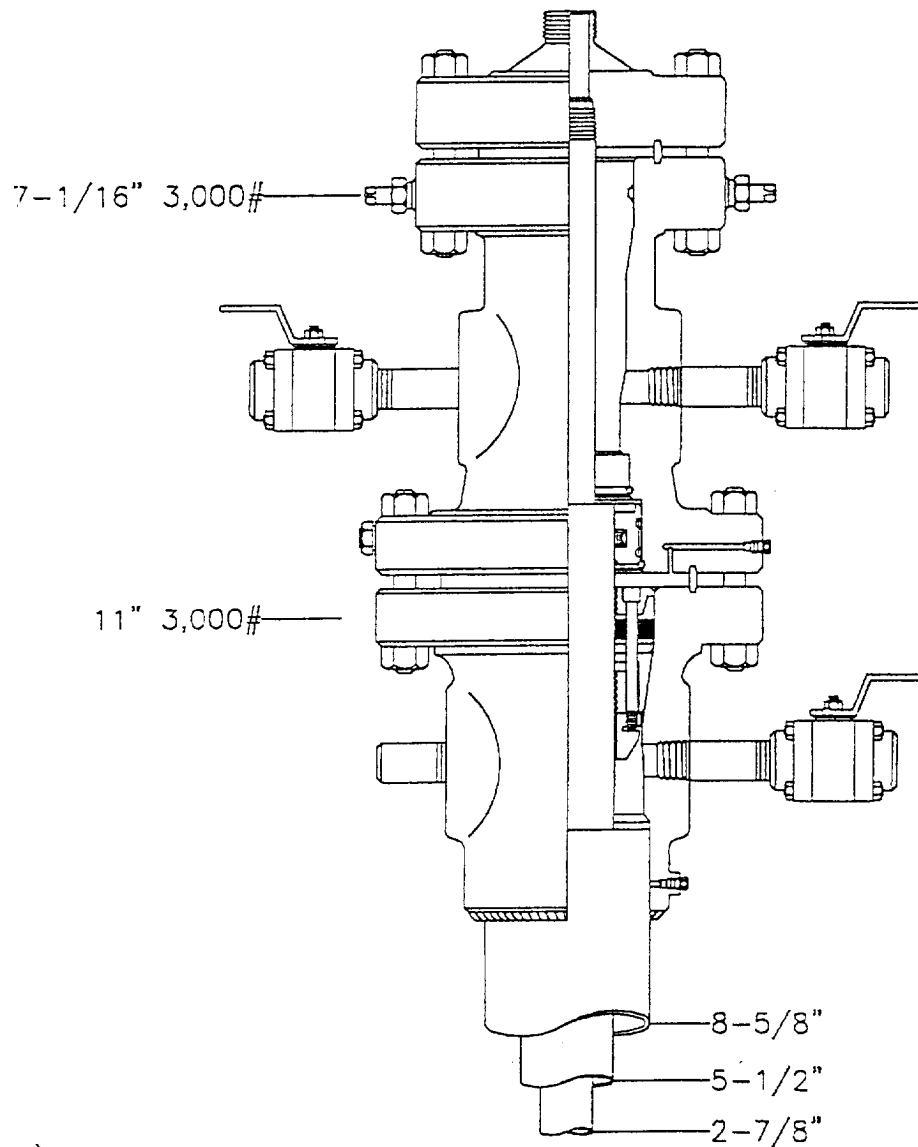
# Apache Corporation

WESTERN REGION

NEDU

Eunice; Blinbry-Tubb-Drinkard, North  
LEA COUNTY, NEW MEXICO

SCALE:	DESIGNER: Cecelia Glue	DATE: 4/22/98
FILE NUMBER: 15.0002	CHECKED: PB	LAST REVISION:



ELF  
ABOVE DATE DOES NOT  
INDICATE WHEN  
CONFIDENTIAL LOGS  
WILL BE RELEASED

