

DISTRICT I

1625 N. French Dr., Hobbs, NM 88240

DISTRICT II

P.O. Drawer DD, Artesia, NM 88210

DISTRICT III

1000 Rio Brazos Rd., Aztec, NM 87410

OIL CONSERVATION DIVISIONP.O. Box 2088
Santa Fe, New Mexico 87504-2088

WELL API NO.

30-025-34658

5. Indicate Type of Lease

☐ STATE☒ FEE

6. State Oil & Gas Lease No.

22503

7. Lease Name or Unit Agreement Name

Northeast Drinkard Unit

8. Well No.

833

9. Pool name or Wildcat

Eunice N., Blinbry-Tubb-Drinkard

SUNDRY NOTICES AND REPORTS ON WELLS
(DO NOT USE THIS FORM FOR PROPOSALS TO DRILL OR TO DEEPEN OR PLUG BACK TO A DIFFERENT RESERVOIR. USE "APPLICATION FOR PERMIT" (FORM C-101) FOR SUCH PROPOSALS.)

1. Type of Well:

☒ OIL WELL☐ GAS WELL☐ OTHER

2. Name of Operator

Apache Corporation

3. Address of Operator

2000 Post Oak Blvd., Ste. 100, Houston, Texas 77056-4400

4. Well Location

Unit Letter E : 2506 Feet From The N Line and 1256 Feet From The W Line
Section 23 Township 21S Range 37E NMPM County 025

10. Elevation (Show whether DF, RKB, RT, GR, etc.)

3403' GR

11.

Check Appropriate Box to Indicate Nature of Notice, Report, or Other Data

NOTICE OF INTENTION TO:

☐ Perform Remedial Work☐ Plug and Abandon☐ Temporarily Abandon☐ Change Plans☐ Plug or Alter Casing☐ Other

SUBSEQUENT REPORT OF:

☐ Remedial Work☐ Altering Casing☒ Commence Drilling Operations☐ Plug and Abandonment☐ Casing Test and Cement Job☒ Other

Surface & Production Casing

12. Describe Proposed or Completed Operations (Clearly state all pertinent details, and give pertinent dates, including estimated date of starting any proposed work)
SEE RULE 1103.

9/22/99 MIRU Patterson Rig # 65. Spud well @ 7:15 pm

9/23/99 Drilled 12-1/4" hole to 1235'. Ran 29 jts 8-5/8" 24# K-55 ST&C casing. Cemented w / 510 sx Class "C". Circulated 123 sx to pit

10/6/99 Drilled 7-7/8" hole to 6795'. Ran 165 jts 5-1/2" 17# J-55 LT&C casing. Cemented w / 850 sx 35/65 POZ "C" & 450 sx 50/50 POZ "H". Circulated 97 sx to pit. Top of float collar @ 6708'. Top of float shoe @ 6793'. Released rig @ 11:30 am

I hereby certify that the information above is true and complete to the best of my knowledge and belief.

SIGNATURE

TITLE

Sr. Engineering Technician

DATE

10/12/99

TYPE OF PRINT NAME

Debra J. Anderson

TELEPHONE NO.

713-296-6338

(This space for State Use)

APPROVED BY

DISTRICT SUPERVISOR

TITLE

DATE

OCT 20 1999

CONDITIONS OF APPROVAL, IF ANY:

District I
P.O. Box 1380, Hobbs, NM 88241-1980
District II
811 South First, Artesia, NM 88210
District III
1000 Rio Brazos Rd., Aztec, NM 87410
District IV
2040 South Pacheco, Santa Fe, NM 87505

State of New Mexico
Energy, Minerals & Natural Resources Department

OIL CONSERVATION DIVISION
2040 South Pacheco
Santa Fe, NM 87505

Form C-101
Revised October 18, 1994
Instructions on back
Submit to Appropriate District Office
State Lease - 6 Copies
Fee Lease - 5 Copies

☐ AMENDED REPORT

APPLICATION FOR PERMIT TO DRILL, RE-ENTER, DEEPEN, PLUGBACK, OR ADD A ZONE

1 Operator Name and Address Apache Corporation 2000 Post Oak Blvd. Ste. 100 Houston, Texas 77056-4400		2 OGRID Number 873
4 Property Code 22503		3 API Number 30-025- 34658
5 Property Name Northeast Drinkard Unit		6 Well No. 833

7 Surface Location

UL or lot no. E	Section 23	Township 21-S	Range 37-E	Lot Idn	Feet from the 2506	North/South Line North	Feet from the 1256	East/West Line West	County Lea
--------------------	---------------	------------------	---------------	---------	-----------------------	---------------------------	-----------------------	------------------------	---------------

8 Proposed Bottom Hole Location If Different From Surface

UL or lot no.	Section	Township	Range	Lot Idn	Feet from the	North/South Line	Feet from the	East/West Line	County
9 Proposed Pool 1 Eunice; Blinebry-Tubb-Drinkard, North					10 Proposed Pool 2				

11 Work Type Code N	12 Well Type Code O	13 Cable/Rotary R	14 Lease Type Code P	15 Ground Level Elevation 3403 KB
16 Multiple	17 Proposed Depth 7000'	18 formation Blinebry/Drinkard	19 Contractor ASAP	20 Spud Date

21 Proposed Casing and Cement Program

Hole Size 12 1/4"	Casing Size 8 5/8"	Casing weight/foot 24# K55 STC	Setting Depth 1365' or Anhydrite Form.	Sacks of Cement 480 sxs PBCZ	Estimated TOC Circulate to Surf
7 7/8"	5 1/2"	17# K55 LTC	7000'	870 sxs Hal. Interfill "C"	Circulate to Surf
				+455 sxs 50/50	
				Pozmix	

22 Describe the proposed program. If this application is to DEEPEN or PLUG BACK give the data on the present productive zone and proposed new productive zone. Describe the blowout prevention program, if any. Use additional sheets if necessary.

Propose to drill 12 1/4" hole to 1365', run & set 1365' of 8 5/8" and cement, circulate to surface

Drill 7 7/8" hole to 7000', run & set 7000' of 5 1/2" and cement, (caliper + 20%) circulate to surface.

Blow Out Prevention: See attached copy

Permit Expires 1 Year From Approval
Date Unless Drilling Underway

23 I hereby certify that the information given above is true and complete to the best of my knowledge and belief.

Signature: *Everett Ouzts*
Printed Name: Everett Ouzts

Title: Engineering Technician

Date: 07/08/99

Phone: 915-631-3733

OIL CONSERVATION DIVISION

Approved by: *Laurel W. Stude*
Title: FIELD REPRESENTATIVE

Approval Date: JUL 09 1999 Expiration Date:

Conditions on Approval:

CT
m/p

DISTRICT I
P.O. Box 1980, Hobbs, NM 88241-1980

DISTRICT II
P.O. Drawer DD, Artesia, NM 88211-0719

DISTRICT III
1000 Rio Brazos Rd., Aztec, NM 87410

DISTRICT IV
P.O. BOX 2088, SANTA FE, N.M. 87504-2088

State of New Mexico
Energy, Minerals and Natural Resources Department

Form C-102
Revised February 10, 1994
Submit to Appropriate District Office
State Lease - 4 Copies
Fee Lease - 3 Copies

OIL CONSERVATION DIVISION

P.O. Box 2088
Santa Fe, New Mexico 87504-2088

☐ AMENDED REPORT

WELL LOCATION AND ACREAGE DEDICATION PLAT

API Number 30-025-34658	Pool Code 22900	Pool Name Eunice; Blinebry-Tubb-Drinkard, North
Property Code 22503	Property Name NEDU	Well Number 833
OGRID No. 873	Operator Name APACHE CORPORATION	Elevation 3403'

Surface Location

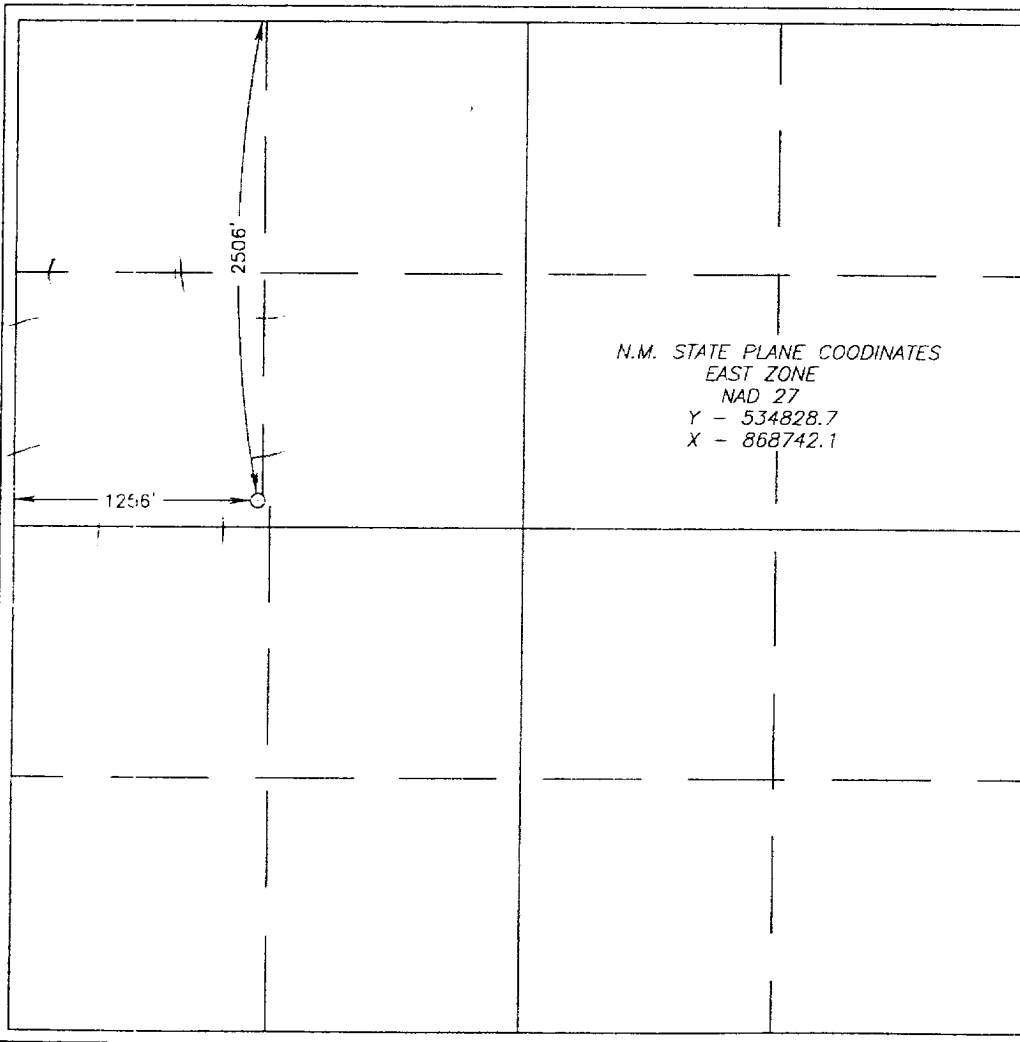
UL or lot No.	Section	Township	Range	Lot Idn	Feet from the	North/South line	Feet from the	East/West line	County
E	23	21 S	37 E		2506	NORTH	1256	WEST	LEA

Bottom Hole Location If Different From Surface

UL or lot No.	Section	Township	Range	Lot Idn	Feet from the	North/South line	Feet from the	East/West line	County

Dedicated Acres 40	Joint or Infill	Consolidation Code	Order No.
-----------------------	-----------------	--------------------	-----------

NO ALLOWABLE WILL BE ASSIGNED TO THIS COMPLETION UNTIL ALL INTERESTS HAVE BEEN CONSOLIDATED
OR A NON-STANDARD UNIT HAS BEEN APPROVED BY THE DIVISION

	<p>OPERATOR CERTIFICATION</p> <p>I hereby certify the the information contained herein is true and complete to the best of my knowledge and belief.</p> <p><i>Everett Ouzts</i> Signature Everett Ouzts Printed Name Eng. Tech. Title 7/06/99 Date</p> <p>SURVEYOR CERTIFICATION</p> <p>I hereby certify that the well location shown on this plat was plotted from field notes of actual surveys made by me or under my supervision, and that the same is true and correct to the best of my belief.</p> <p>JUNE 15, 1999 Date Surveyed Signature & Seal of Professional Surveyor Professional Surveyor 96-11-0526 Certificate No. 3239 12641</p>
---	--

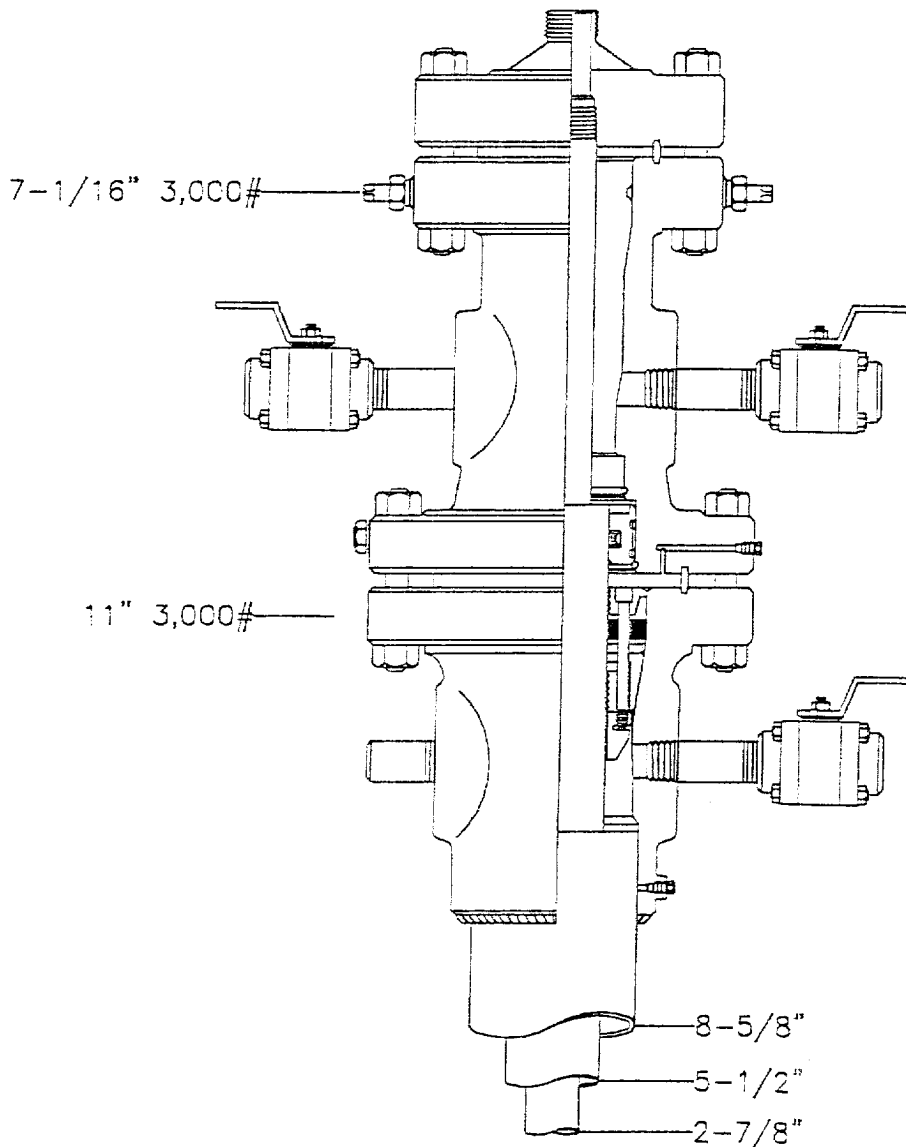
Apache Corporation

WESTERN REGION

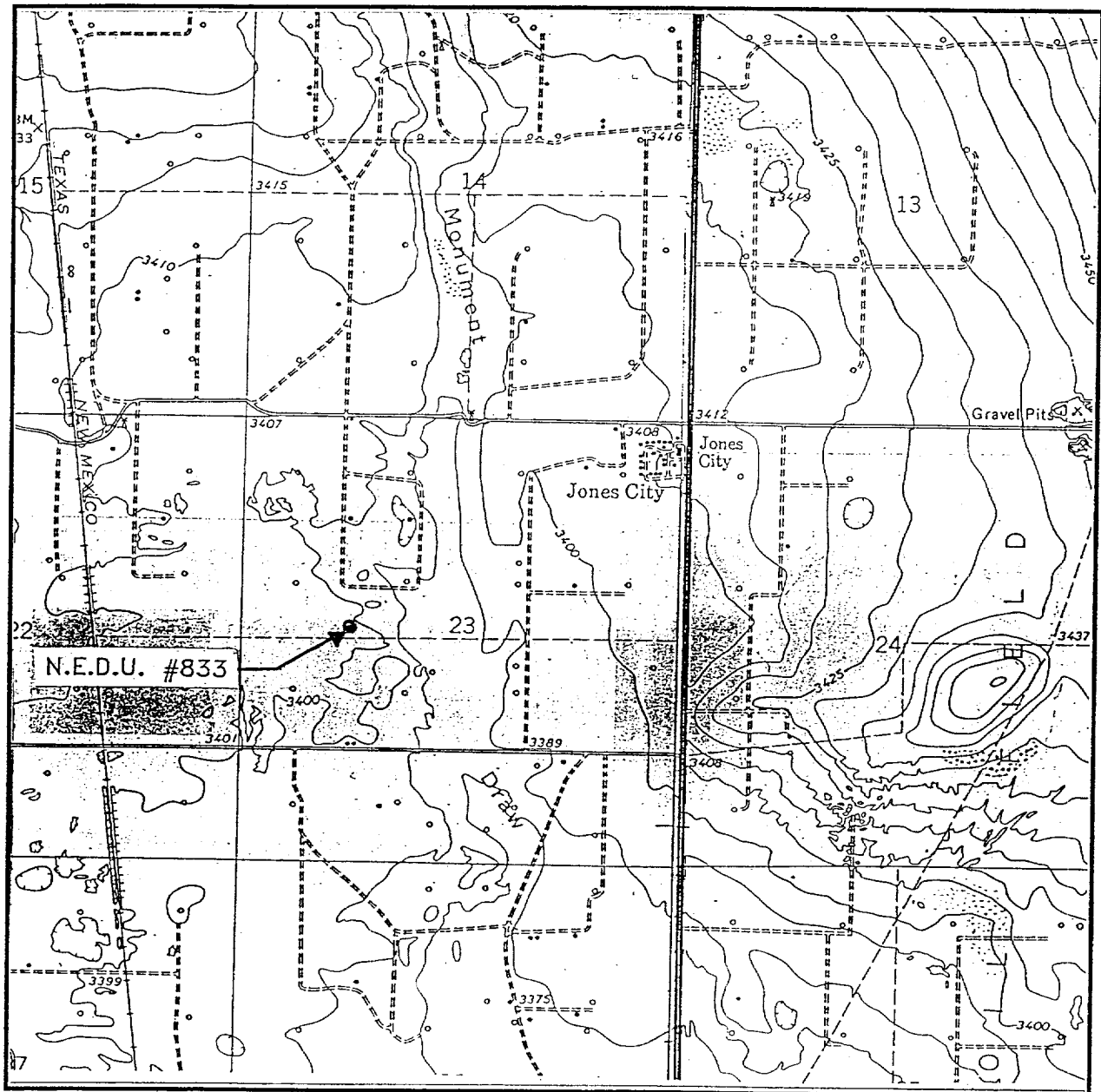
NEDU

Eunice; Blinbry-Tubb-Drinkard, North
LEA COUNTY, NEW MEXICO

WELL:	DATE BY: Cecelia Glue	DATE:	4/22/98
FILE: NEDUPES.DWG	DRAWN BY:	DATE:	



LOCATION VERIFICATION MAP



SCALE: 1" = 2000'

CONTOUR INTERVAL - 10'

SEC. 23 TWP. 21-S RGE. 37-E

SURVEY N.M.P.M.

COUNTY LEA

DESCRIPTION 2506' FNL & 1256' FWL

ELEVATION 3403'

OPERATOR APACHE CORPORATION

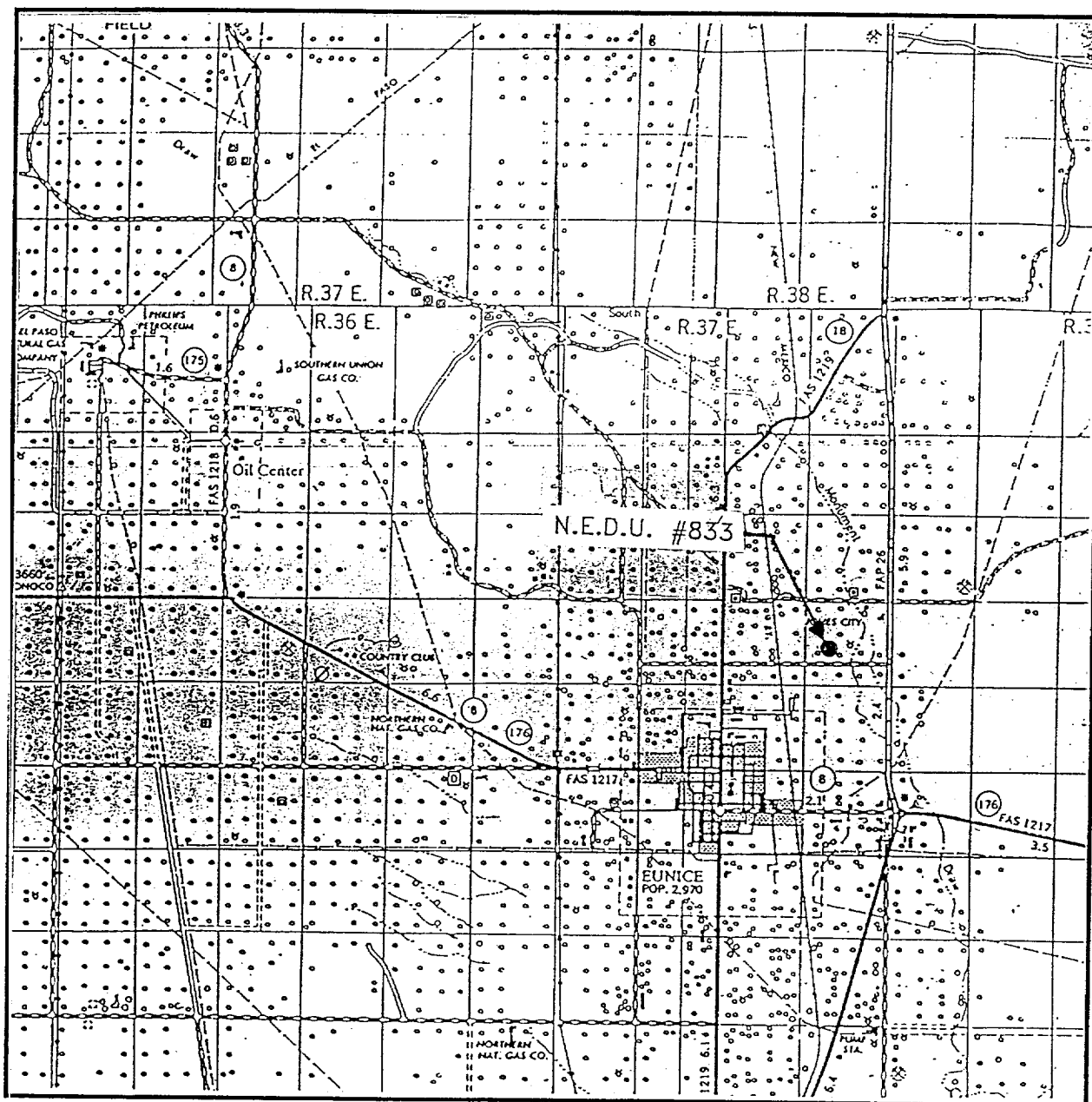
LEASE N.E.D.U.

U.S.G.S. TOPOGRAPHIC MAP

EUNICE, N.M.

JOHN WEST SURVEYING CO.
HOBBS, NEW MEXICO
(505) 393-3117

VICINITY MAP



SCALE: 1" = 2 MILES

SEC. 23 TWP. 21-S RGE. 37-E

SURVEY N.M.P.M.

COUNTY LEA

DESCRIPTION 2506' FNL & 1256' FWL

ELEVATION 3421'

OPERATOR APACHE CORPORATION

LEASE N.E.D.U.

JOHN WEST SURVEYING CO.
HOBBS, NEW MEXICO
(505) 393-3117

ELF 11/8/99
ABOVE DATE DOES NOT
INDICATE WHEN
CONFIDENTIAL LOGS
WILL BE RELEASED