

District I
P O Box 1980, Hobbs, NM 88241-1980
District II
811 South First Artesia NM 88210
District III
1000 Rio Brazos Rd., Aztec, NM 87410
District IV
2040 South Pacheco, Santa Fe, NM 87505

State of New Mexico
Energy, Minerals & Natural Resources Department
OIL CONSERVATION DIVISION
2040 South Pacheco
Santa Fe, NM 87505

Form C-101
Revised October 18, 1994
Instructions on back
Submit to Appropriate District Office
State Lease - 6 Copies
Fee Lease - 5 Copies

☐ AMENDED REPORT

APPLICATION FOR PERMIT TO DRILL, RE-ENTER, DEEPEN, PLUGBACK, OR ADD A ZONE

1 Operator Name and Address Apache Corporation 2000 Post Oak Blvd. Ste. 100 Houston, Texas 77056-4400		2 OGRID Number 873
4 Property Code 22503		3 API Number 30-025-34660
5 Property Name Northeast Drinkard Unit		6 Well No 716

7 Surface Location

UL or lot no.	Section	Township	Range	Lot Idn	Feet from the	North/South Line	Feet from the	East/West Line	County
D	22	21-S	37-E		61	North	1212	West	Lea

8 Proposed Bottom Hole Location If Different From Surface

UL or lot no.	Section	Township	Range	Lot Idn	Feet from the	North/South Line	Feet from the	East/West Line	County
9 Proposed Pool 1 Eunice; Blinebry-Tubb-Drinkard, North					10 Proposed Pool 2				

11 Work Type Code N	12 Well Type Code O	13 Cable/Rotary R	14 Lease Type Code P	15 Ground Level Elevation 3428 KB
16 Multiple	17 Proposed Depth 7000'	18 formation Blinebry/Drinkard	19 Contractor	20 Spud Date ASAP

21 Proposed Casing and Cement Program

Hole Size	Casing Size	Casing weight/foot	Setting Depth	Sacks of Cement	Estimated TOC
12 1/4"	8 5/8"	24# K55 STC	1365' or Anhydrite Form.	480 sxs PBCZ	Circulate to Surf
7 7/8"	5 1/2"	17# K55 LTC	7000'	870 sxs Hal. Interfill "C"	Circulate to Surf
				+455 sxs 50/50	
				Pozmix	

22 Describe the proposed program. If this application is to DEEPEN or PLUG BACK give the data on the present productive zone and proposed new productive zone. Describe the blowout prevention program, if any. Use additional sheets if necessary.

Propose to drill 12 1/4" hole to 1365', run & set 1365' of 8 5/8" and cement, circulate to surface

Drill 7 7/8" hole to 7000', run & set 7000' of 5 1/2" and cement, (caliper + 20%) circulate to surface.

Blow Out Prevention: See attached copy

Permit Expires 1 Year From Approval
Date Unless Drilling Underway

23 I hereby certify that the information given above is true and complete to the best of my knowledge and belief.

Signature <i>Everett Ouzts</i>	OIL CONSERVATION DIVISION	
Printed Name Everett Ouzts	Approved by	
Title Engineering Technician	Title	
Date 07/09/99	Approval Date	Expiration Date
Phone 915-631-3733	Conditions of Approval	

4704

myf

DISTRICT I
P.O. Box 1980, Hobbs, NM 88241-1980

DISTRICT II
P.O. Drawer DD, Artesia, NM 88211-0719

DISTRICT III
1000 Rio Brazos Rd., Artec, NM 87410

DISTRICT IV
P.O. BOX 2088, SANTA FE, N.M. 87504-2088

State of New Mexico
Energy, Minerals and Natural Resources Department

Form C-102
Revised February 10, 1984
Submit to Appropriate District Office
State Lease - 4 Copies
Fee Lease - 3 Copies

OIL CONSERVATION DIVISION

P.O. Box 2088
Santa Fe, New Mexico 87504-2088

☐ AMENDED REPORT

WELL LOCATION AND ACREAGE DEDICATION PLAT

API Number 30-025-34660	Pool Code 22900	Pool Name Eunice; Blinbry-Tubb-Drinkard, North
Property Code 22503	Property Name NEDJ	Well Number 716
OGRID No. 873	Operator Name APACHE CORPORATION	Elevation 3428'

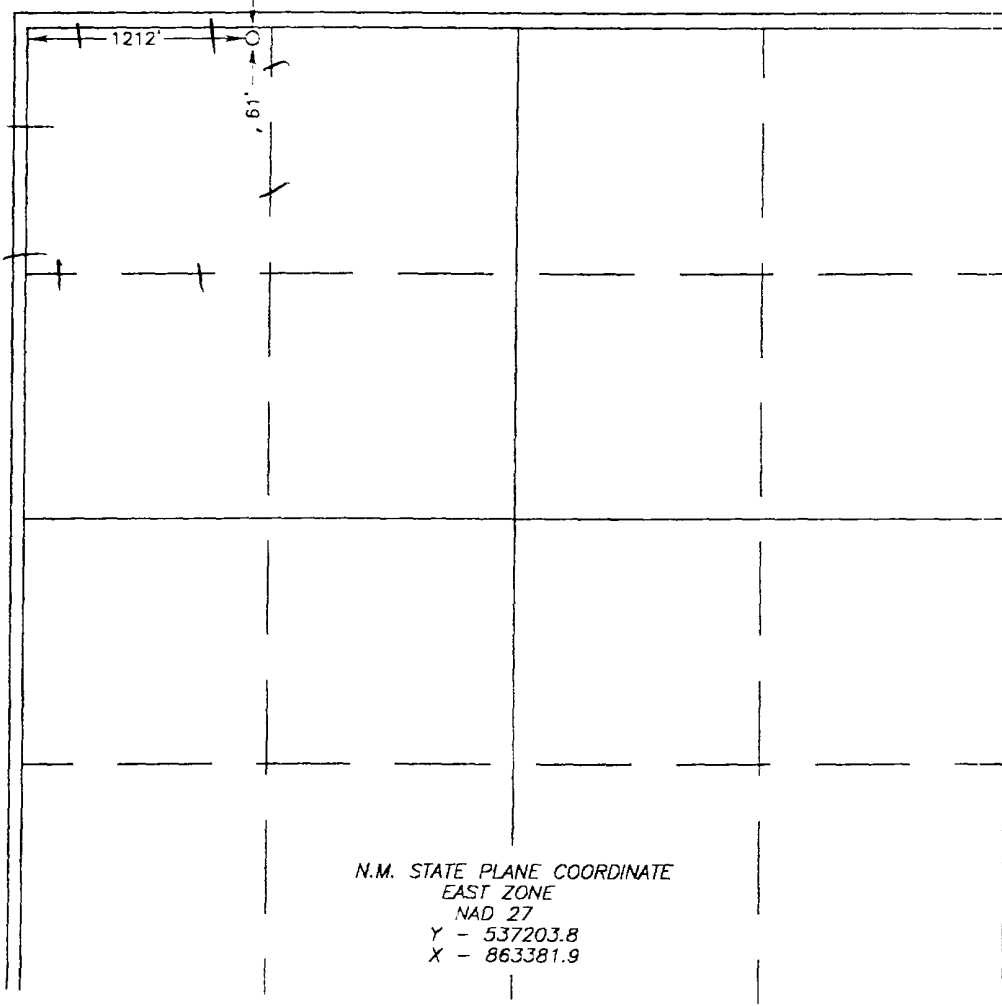
Surface Location

UL or lot No. D	Section 22	Township 21 S	Range 37 E	Lot Idn	Feet from the 61	North/South line NORTH	Feet from the 1212	East/West line WEST	County LEA
--------------------	---------------	------------------	---------------	---------	---------------------	---------------------------	-----------------------	------------------------	---------------

Bottom Hole Location If Different From Surface

UL or lot No.	Section	Township	Range	Lot Idn	Feet from the	North/South line	Feet from the	East/West line	County
Dedicated Acres 40	Joint or Infill	Consolidation Code	Order No.						

NO ALLOWABLE WILL BE ASSIGNED TO THIS COMPLETION UNTIL ALL INTERESTS HAVE BEEN CONSOLIDATED
OR A NON-STANDARD UNIT HAS BEEN APPROVED BY THE DIVISION

	<p>OPERATOR CERTIFICATION</p> <p>I hereby certify that the information contained herein is true and complete to the best of my knowledge and belief.</p> <p><u>Everett Ouzts</u> Signature</p> <p>Everett Ouzts Printed Name</p> <p>Eng. Tech. Title</p> <p>07/09/99 Date</p>
<p>N.M. STATE PLANE COORDINATE EAST ZONE NAD 27 Y - 537203.8 X - 863381.9</p>	<p>SURVEYOR CERTIFICATION</p> <p>I hereby certify that the well location shown on this plat was plotted from field notes of actual surveys made by me or under my supervision, and that the same is true and correct to the best of my belief.</p> <p>JUNE 28, 1999</p> <p>Date Surveyed Signature & Seal of Professional Surveyor RONALD J. EIDSON 99-11-0584</p> <p>Certificate No. RONALD J. EIDSON 3239 CARLETON 12641</p>

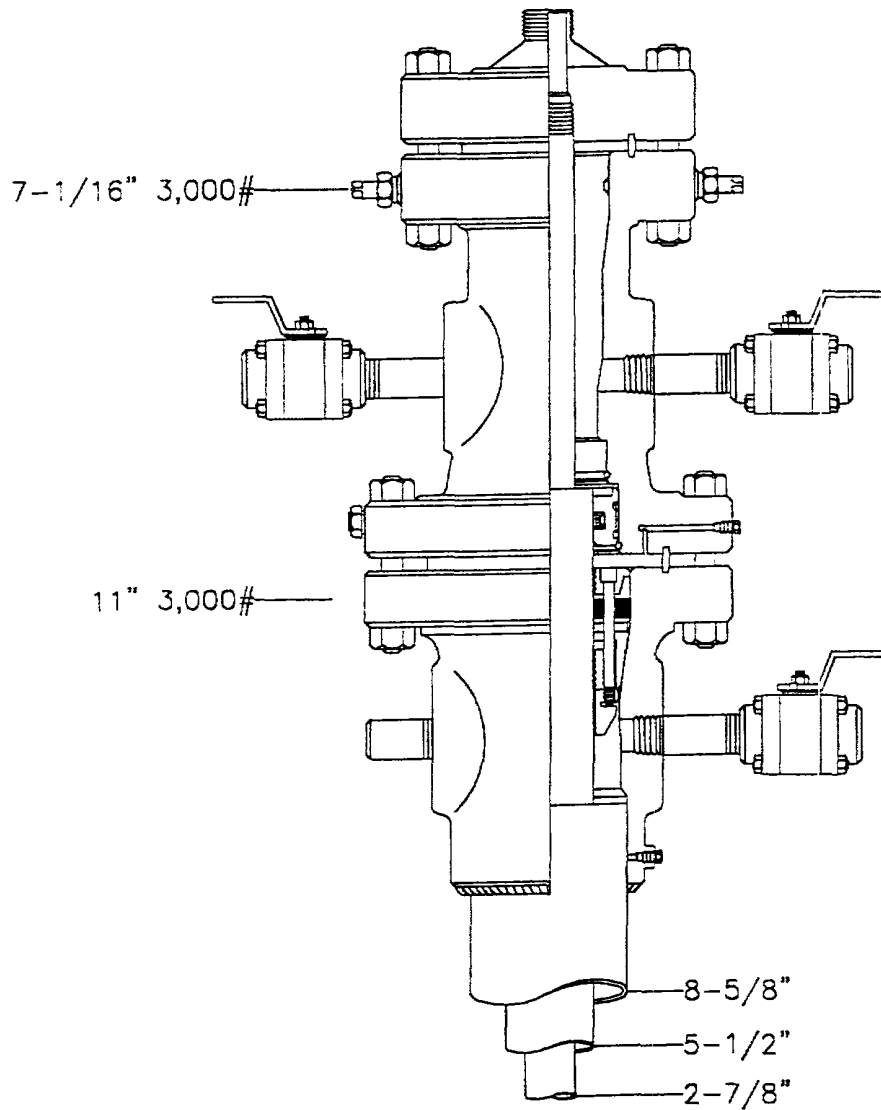
Apache Corporation

WESTERN REGION

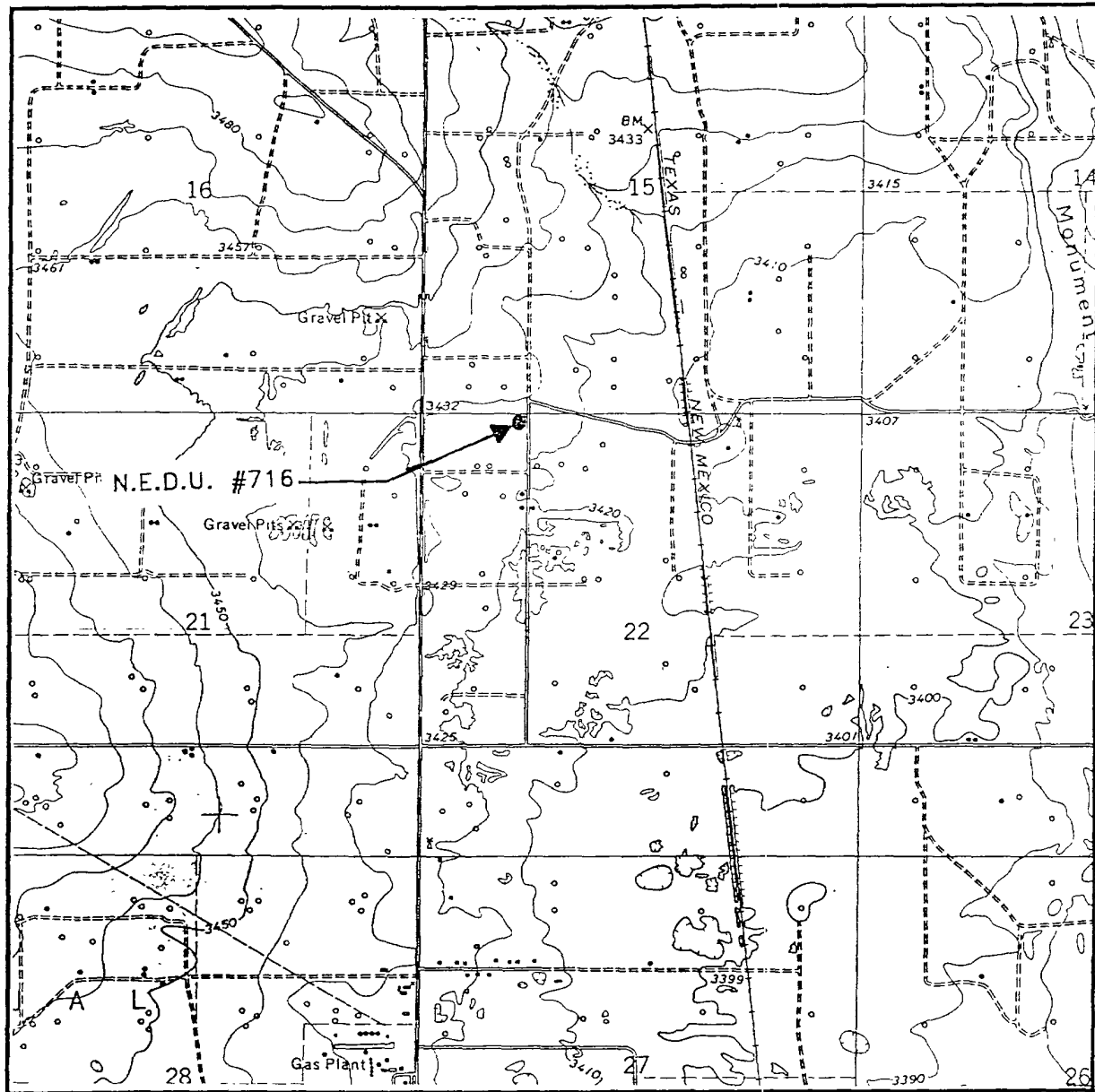
NEDU

Eunice; Blinbry-Tubb-Drinkard, North
LEA COUNTY, NEW MEXICO

SCALE:	AS SHOWN ON COPIES OF GLASS	DATE:	4/22/88
FILE NUMBER:	CHARGE NO.	LAST REVISION:	



LOCATION VERIFICATION MAP



SCALE: 1" = 2000'

CONTOUR INTERVAL - 10'

SEC. 22 TWP. 21-S RGE. 37-E

SURVEY N.M.P.M.

COUNTY LEA

DESCRIPTION 61' FNL & 1212' FWL

ELEVATION 3428'

OPERATOR APACHE CORPORATION

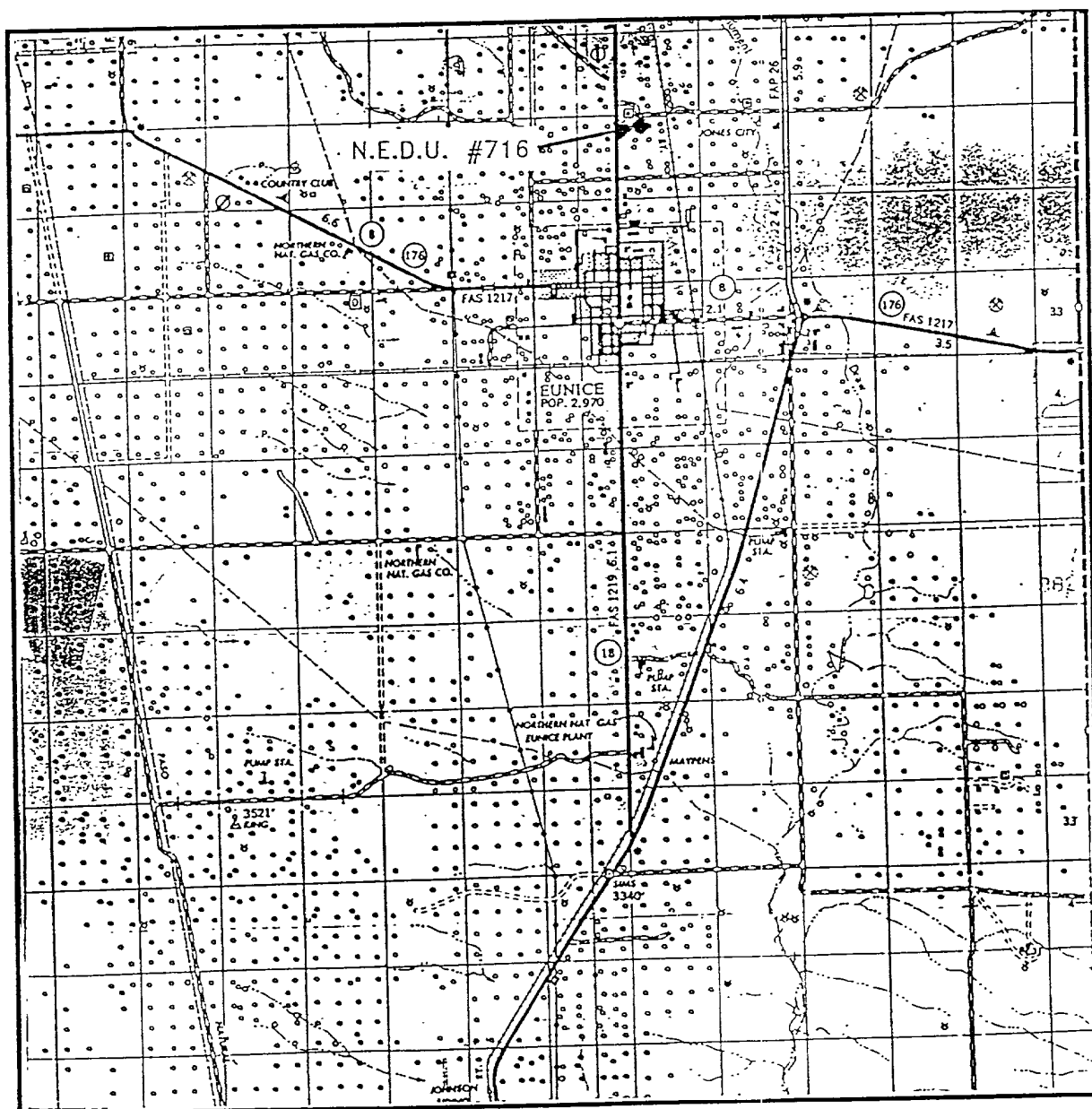
LEASE N.E.D.U.

U.S.G.S. TOPOGRAPHIC MAP

FINICE. N.M.

JOHN WEST SURVEYING CO.
HOBBS, NEW MEXICO
(505) 393-3117

VICINITY MAP



SEC. 22 TWP. 21-S RGE. 37-E

SURVEY N.M.P.M.

COUNTY LEA

DESCRIPTION 61' FNL & 1212' FWL

ELEVATION 3428'

OPERATOR APACHE CORPORATION

JOHN WEST SURVEYING CO.
HOBBS, NEW MEXICO
(505) 393-3117

ABOVE DATE DOES NOT
INDICATE WHEN
CONFIDENTIAL LOGS
WILL BE RELEASED

ELF