

District I
1625 N. French Dr., Hobbs, NM 88240

District II
811 South First, Artesia, NM 88210

District III
1000 Rio Brazos Rd., Aztec, NM 87410

District IV
2040 South Pacheco, Santa Fe, NM 87505

State of New Mexico
Energy, Minerals & Natural Resources Department

OIL CONSERVATION DIVISION

2040 South Pacheco
Santa Fe, NM 87505

Form C-101

Revised October 18, 1994

Instructions on Back

Submit to Appropriate District Office

State Lease - 6 Copies

Fee Lease - 5 Copies

☐ AMENDED REPORT

APPLICATION FOR PERMIT TO DRILL, RE-ENTER, DEEPEN, PLUGBACK, OR ADD A ZONE

1 Operator Name and Address Apache Corporation 2000 Post Oak Blvd. Ste. 100 Houston, Texas 77056-4400		2 OGRID Number 000873
4 Property Code 22503	5 Property Name Northeast Drinkard Unit	3 API Number 30-025- 34737
		6 Well No. 134

7 Surface Location

UL or lot no.	Section	Township	Range	Lot Idn	Feet from the	North/South Line	Feet from the	East/West Line	County
8/H	4	21S	37E		2620	North	116	East	Lea

8 Proposed Bottom Hole Location If Different From Surface

UL or lot no.	Section	Township	Range	Lot Idn	Feet from the	North/South Line	Feet from the	East/West Line	County
9 Proposed Pool 1 Eunice; Blinebry-Tubb-Drinkard, North (22900)					10 Proposed Pool 2				

11 Work Type Code N	12 Well Type Code O	13 Cable/Rotary R	14 Lease Type Code P	15 Ground Level Elevation 3471
16 Multiple	17 Proposed Depth 7000	18 Formation Blinebry/Drinkard	19 Contractor	20 Spud Date ASAP

21 Proposed Casing and Cement Program

Hole Size	Casing Size	Casing weight/foot	Setting Depth	Sacks of Cement	Estimated TOC
12-1/4"	8-5/8"	24# K-55 ST&C	1365' or Anhydrite Form.	480 sx PBCZ	Circulate to Surface
7-7/8"	5-1/2"	17# K-55 LT&C	7000'	850 sx Interfill	
				"C" & 350 sx	Circulate to Surface
				50/50 POZ Mix	

22 Describe the proposed program. If this application is to DEEPEN or PLUG BACK give the data on the present productive zone and proposed new productive zone. Describe the blowout prevention program, if any. Use additional sheets if necessary.

Propose to drill 12-1/4" hole to 1365', run, set & cement 1365' of 8-5/8" casing. Circulate cement to surface

Drill 7-7/8" hole to 7000', run, set & cement 7000' of 5-1/2" casing. Circulate cement to surface.

Blow Out Prevention: See attached copy

Permit Expires 1 Year From Approval
Date Unless Drilling Underway

23 I hereby certify that the information given above is true and complete to the best of my knowledge and belief.

Signature: *Everett Ouzts*

Printed Name: Everett Ouzts

Title: Engineering Technician

Date: 10-18-99

Phone: 915-631-3733

OIL CONSERVATION DIVISION

ORIGINAL SIGNED BY

Approved By: GARY VANK
FIELD REP. II

Title:

Approval Date:

Expiration Date:

Conditions of Approval:

DISTRICT I
P.O. Box 1980, Hobbs, NM 88241-1980

DISTRICT II
P.O. Drawer DD, Artesia, NM 88211-0719

DISTRICT III
1000 Rio Brazos Rd., Aztec, NM 87410

DISTRICT IV
P.O. BOX 2088, SANTA FE, N.M. 87504-2088

State of New Mexico
Energy, Minerals and Natural Resources Department

Form C-102
Revised February 10, 1994
Submit to Appropriate District Office
State Lease - 4 Copies
Fee Lease - 3 Copies

OIL CONSERVATION DIVISION

P.O. Box 2088
Santa Fe, New Mexico 87504-2088

☐ AMENDED REPORT

WELL LOCATION AND ACREAGE DEDICATION PLAT

API Number 30-025- 34737	Pool Code 22900	Pool Name Eunice; Blinebry-Tubb-Drinkard, North
Property Code 22503	Property Name Northeast Drinkard Unit	Well Number 134
OGRID No. 000873	Operator Name APACHE CORPORATION	Elevation 3471'

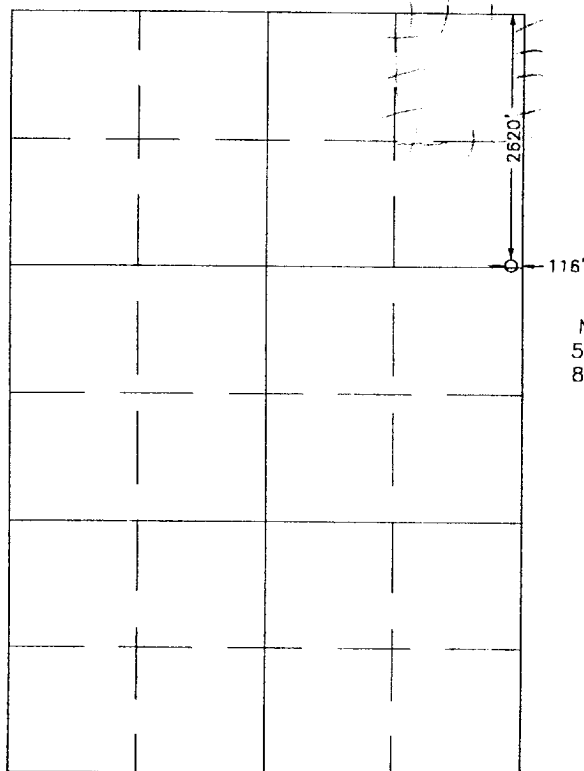
Surface Location

UL or lot No. 8	Section 4	Township 21 S	Range 37 E	Lot Idn	Feet from the 2620	North/South line NORTH	Feet from the 116	East/West line EAST	County LEA
--------------------	--------------	------------------	---------------	---------	-----------------------	---------------------------	----------------------	------------------------	---------------

Bottom Hole Location If Different From Surface

UL or lot No.	Section	Township	Range	Lot Idn	Feet from the	North/South line	Feet from the	East/West line	County
Dedicated Acres	Joint or Infill	Consolidation Code	Order No.						

NO ALLOWABLE WILL BE ASSIGNED TO THIS COMPLETION UNTIL ALL INTERESTS HAVE BEEN CONSOLIDATED
OR A NON-STANDARD UNIT HAS BEEN APPROVED BY THE DIVISION



NAD 27
NMSPC EZ
553038.01 N
861884.96 E

SCALE
1" = 2000'

OPERATOR CERTIFICATION

I hereby certify the the information
contained herein is true and complete to the
best of my knowledge and belief.

Everett Ouzts
Signature

Everett Ouzts
Printed Name

Engineering Technician
Title

10-18-99
Date

SURVEYOR CERTIFICATION

I hereby certify that the well location shown
on this plat was plotted from field notes of
actual surveys made by me or under my
supervision and that the same is true and
correct to the best of my belief.

JUNE 6, 1996

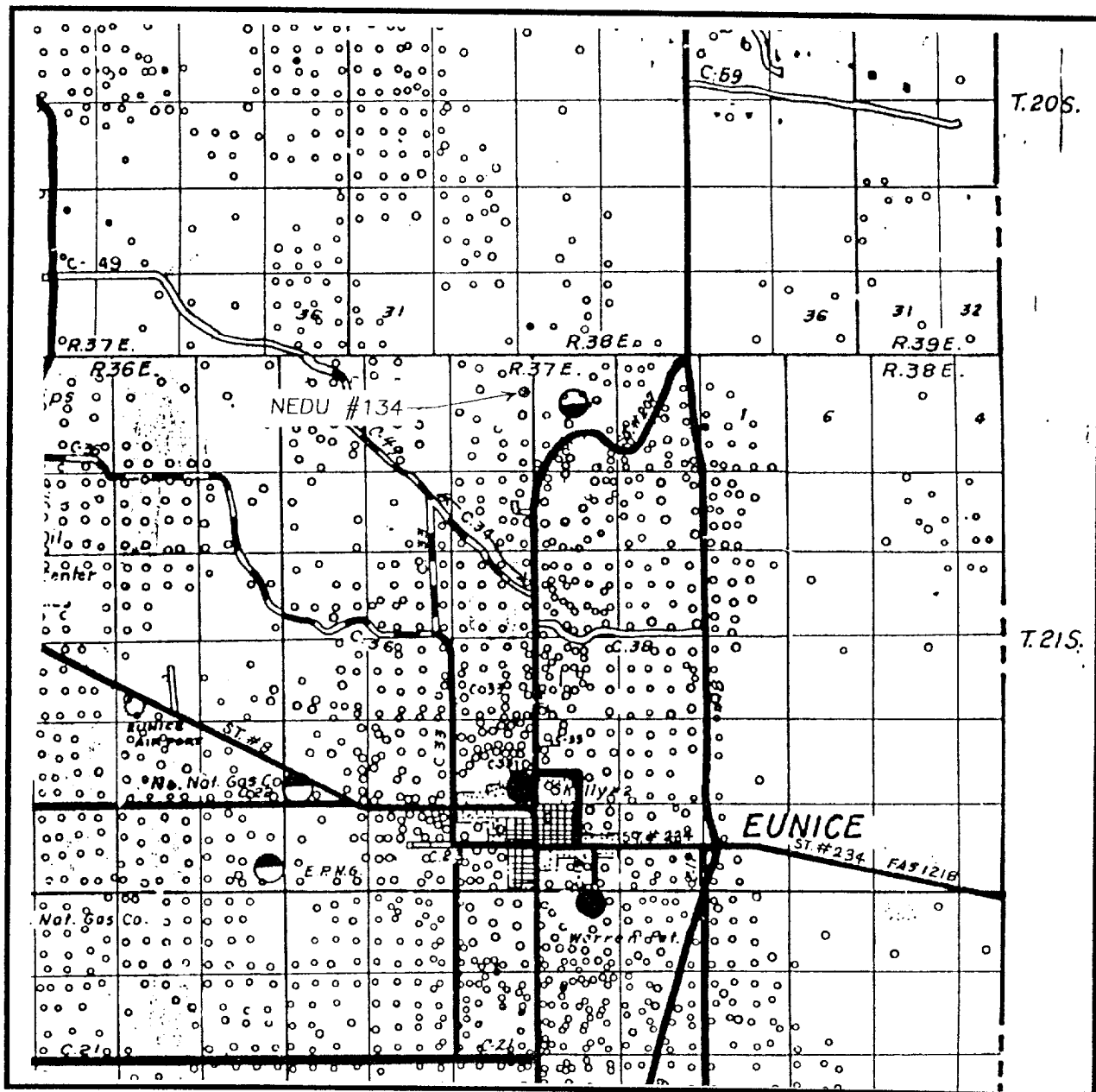
Date Surveyed CDG

Signature of Professional Surveyor

RONALD J. EDSON
10-13-99
99-11-0838

Certificate No. JOHN W. WEST 676
RONALD J. EDSON 3239
CARMY EDSON 12641

VICINITY MAP



SCALE: 1" = 2 MILES

SEC. 4 TWP. 21-S RGE. 37-E

SURVEY _____ N.M.P.M.

COUNTY _____ LEA _____

DESCRIPTION 2620' FNL & 116' FEL

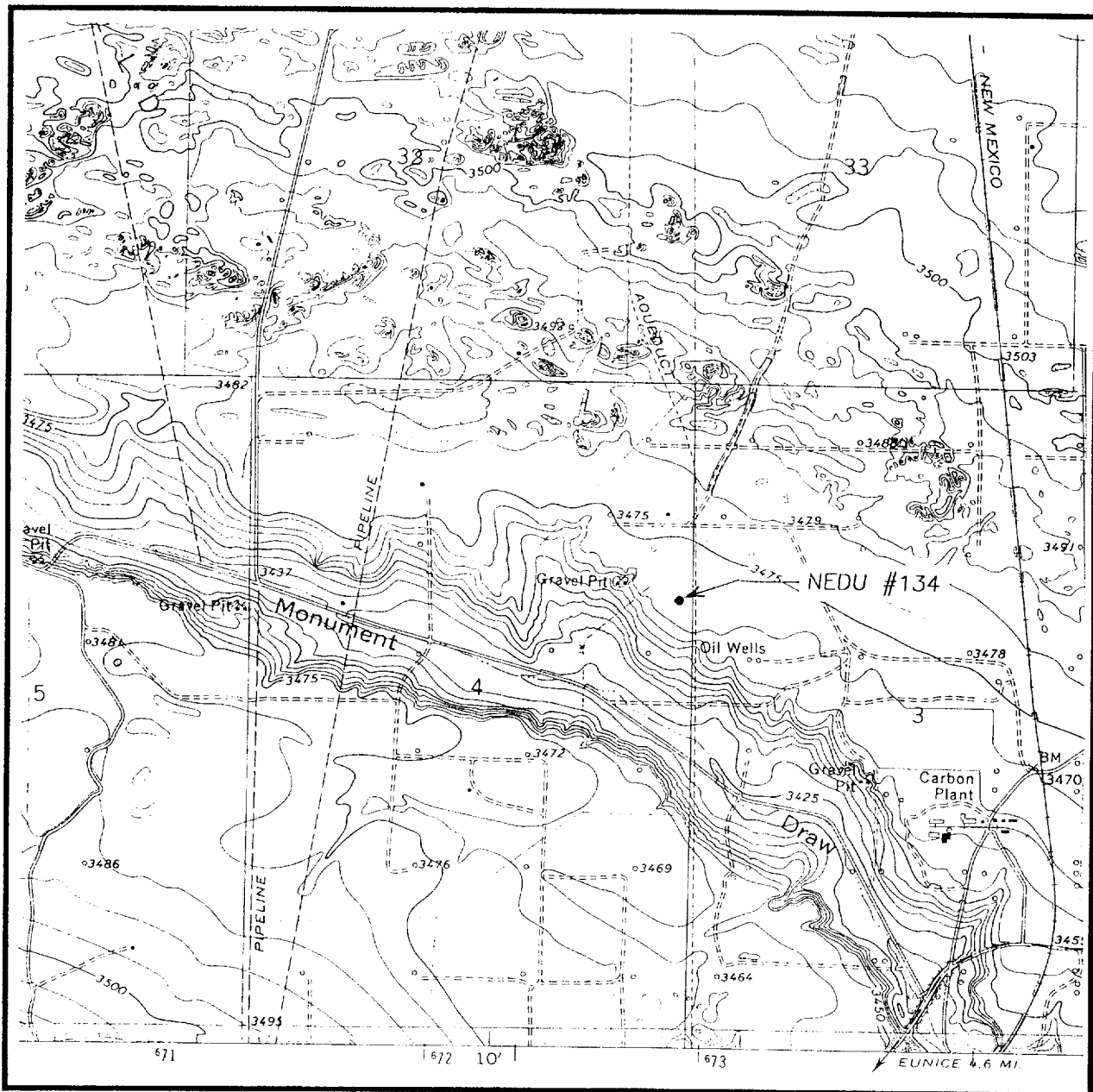
ELEVATION 3471'

OPERATOR APACHE CORPORATION

LEASE _____ NEDU _____

**JOHN WEST SURVEYING
HOBBS, NEW MEXICO
(505) 393-3117**

LOCATION VERIFICATION MAP



SCALE: 1" = 2000'

CONTOUR INTERVAL:
HOBBS, SW — 5'

SEC. 4 TWP. 21-S RGE. 37-E

SURVEY N.M.P.M.

COUNTY LEA

DESCRIPTION 2620' FNL & 116' FEL

ELEVATION 3471'

OPERATOR APACHE CORPORATION

LEASE NEDU

U.S.G.S. TOPOGRAPHIC MAP

HOBBS, SW

JOHN WEST SURVEYING
HOBBS, NEW MEXICO
(505) 393-3117

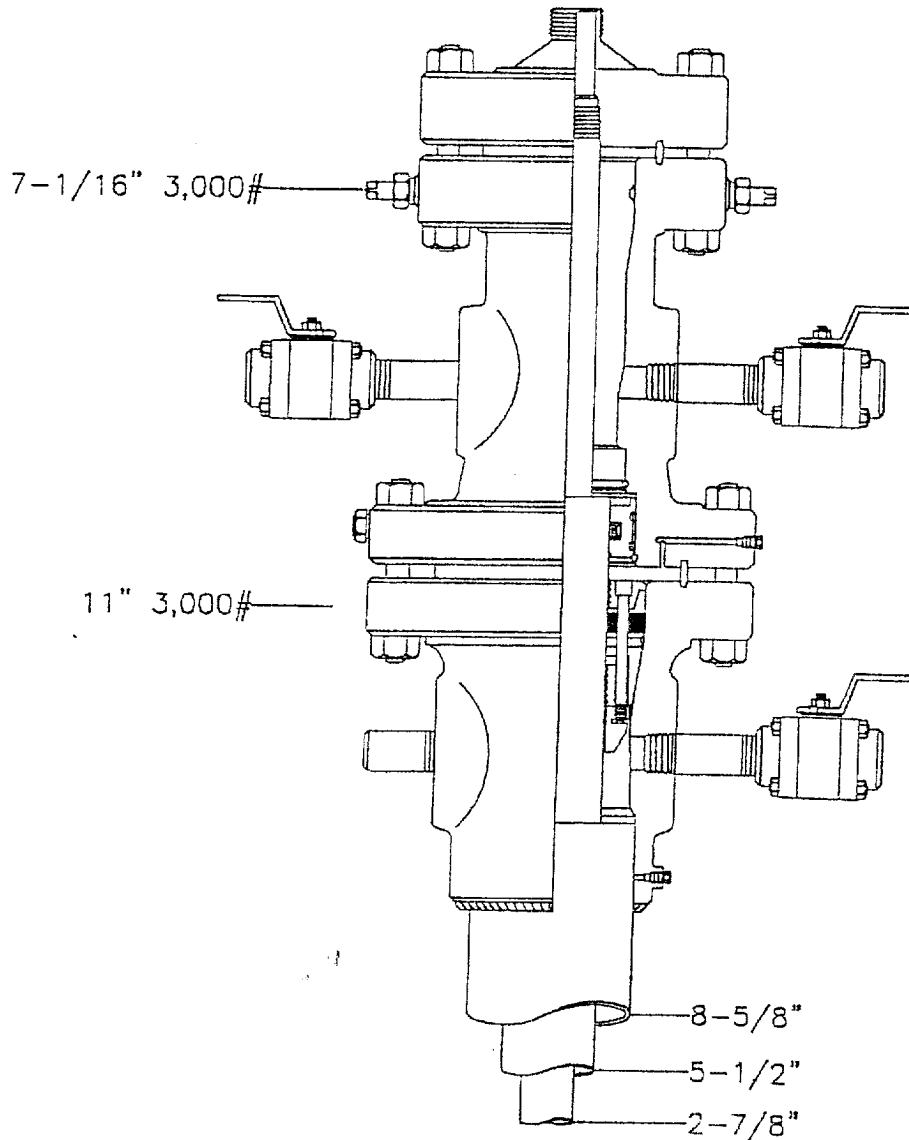
Apache Corporation

WESTERN REGION

NEDU

Eunice; Blinbry-Tubb-Drinkard, North
LEA COUNTY, NEW MEXICO

SCALE	DATE BY Cecelia Glue	DATE	4/22/96
PLANNED BY DWE	DESIGN BY	LAST REVISION	



ELF
ABOVE DATE DOES NOT
INDICATE WHEN
CONFIDENTIAL LOGS
WILL BE RELEASED

2/17/00