

District I  
P.O. Box 1980, Hobbs, NM 88241-1980  
District II  
811 South First, Artesia, NM 88210  
District III  
1000 Rio Brazos Rd. Aztec, NM 87410  
District IV  
2040 South Pacheco, Santa Fe, NM 87505

State of New Mexico  
Energy, Minerals & Natural Resources Department

OIL CONSERVATION DIVISION  
2040 South Pacheco  
Santa Fe, NM 87505

Form C-101  
Revised October 18, 1994  
Instructions on back  
Submit to Appropriate District Office  
State Lease - 6 Copies  
Fee Lease - 5 Copies

☐ AMENDED REPORT

APPLICATION FOR PERMIT TO DRILL, RE-ENTER, DEEPEN, PLUGBACK, OR ADD A ZONE

1 Operator Name and Address		2 OGRID Number
Apache Corporation Attn: Dennis Bickford		873
2000 Post Oak Blvd. Ste. 100		3 API Number
Houston, Texas 77056-4400		30-025- 34802
4 Property Code	5 Property Name	6 Well No.
22503	Northeast Drinkard Unit	829

7 Surface Location									
UL or lot no.	Section	Township	Range	Lot Idn	Feet from the	North/South Line	Feet from the	East/West Line	County
L	22	21-S	37-E		2493	South	1122	West	Lea

8 Proposed Bottom Hole Location If Different From Surface									
UL or lot no.	Section	Township	Range	Lot Idn	Feet from the	North/South Line	Feet from the	East/West Line	County
9 Proposed Pool 1					10 Proposed Pool 2				
Eunice; Blinebry-Tubb-Drinkard, North									

11 Work Type Code	12 Well Type Code	13 Cable/Rotary	14 Lease Type Code	15 Ground Level Elevation
N	O	R	P	3416 KB
16 Multiple	17 Proposed Depth	18 formation	19 Contractor	20 Spud Date
	6800'	Blinebry/Drinkard		ASAP

21 Proposed Casing and Cement Program					
Hole Size	Casing Size	Casing weight/foot	Setting Depth	Sacks of Cement	Estimated TOC
12 1/4"	8 5/8"	24# K55 STC	1300' or Anhydrite Form.	585 sxs	Circulate to Surf
				477 sxs Class "C"	Circulate to Surf
7 7/8"	5 1/2"	17# K55 LTC	6800'	+360 sxs 50/50	
				Pozmix	

22 Describe the proposed program. If this application is to DEEPEN or PLUG BACK give the data on the present productive zone and proposed new productive zone. Describe the blowout prevention program, if any. Use additional sheets if necessary.

Propose to drill 12 1/4" hole to 1300' or 50' into Anhydrite, run & set 1300' of 8 5/8" and cement, circulate to surface  
Lead: 400 sxs Class "C" +2%bwow Cal. Chloride + additives  
Tail: 185 Class "C" +2%bwow Cal. Chloride + additives  
Drill 7 7/8" hole to 6800', run & set 6800' of 5 1/2" and cement, (caliper + 20%) circulate to surface.  
Lead: 477 sxs(36:65)Poz (Fly Ash) Class "C" +2%bwow Cal. Chloride + additives  
Tail: 360 sxs(50:50)Poz (Fly Ash) Class "H" +2%bwow Sod. Chloride + additives

Blow Out Prevention: See attached copy

23 I hereby certify that the information given above is true and complete to the best of my knowledge and belief.

Signature	Everett Ouzts 12/15/99	OIL CONSERVATION DIVISION	
Printed Name	Everett Ouzts	Approved by:	DISTRICT IV DIVISION
Title	Engineering Technician	Title:	
Date: 12/13/99	Phone: 515-631-3733	Approval Date: DEC 17 1999	Expiration Date:
		Conditions on Approval:	

## State of New Mexico

Form C-102

Revised February 10, 1994

Submit to Appropriate District Office

State Lease - 4 Copies

Fee Lease - 3 Copies

Minerals and Natural Resources Department

## DISTRICT I

P.O. Box 1980, Hobbs, NM 88241-1980

## DISTRICT II

P.O. Drawer DD, Artesia, NM 88211-0719

## DISTRICT III

1000 Rio Brazos Rd., Aztec, NM 87410

## DISTRICT IV

P.O. BOX 2088, SANTA FE, N.M. 87504-2088

## OIL CONSERVATION DIVISION

P.O. Box 2088

Santa Fe, New Mexico 87504-2088

☐ AMENDED REPORT

## WELL LOCATION AND ACREAGE DEDICATION PLAT

API Number 30-025- <b>34802</b>	Fool Code 22900	Pool Name Eunice; Blinebry-Tubb-Drinkard, North
Property Code 22503	Property Name N.E.D.U.	Well Number 829
OGRID No. 873	Operator Name APACHE CORPORATION	Elevation 3416

## Surface Location

UL or lot No.	Section	Township	Range	Lot Idn	Feet from the	North/South line	Feet from the	East/West line	County
L	22	21 S	37 E		2493	SOUTH	1122	WEST	LEA

## Bottom Hole Location If Different From Surface

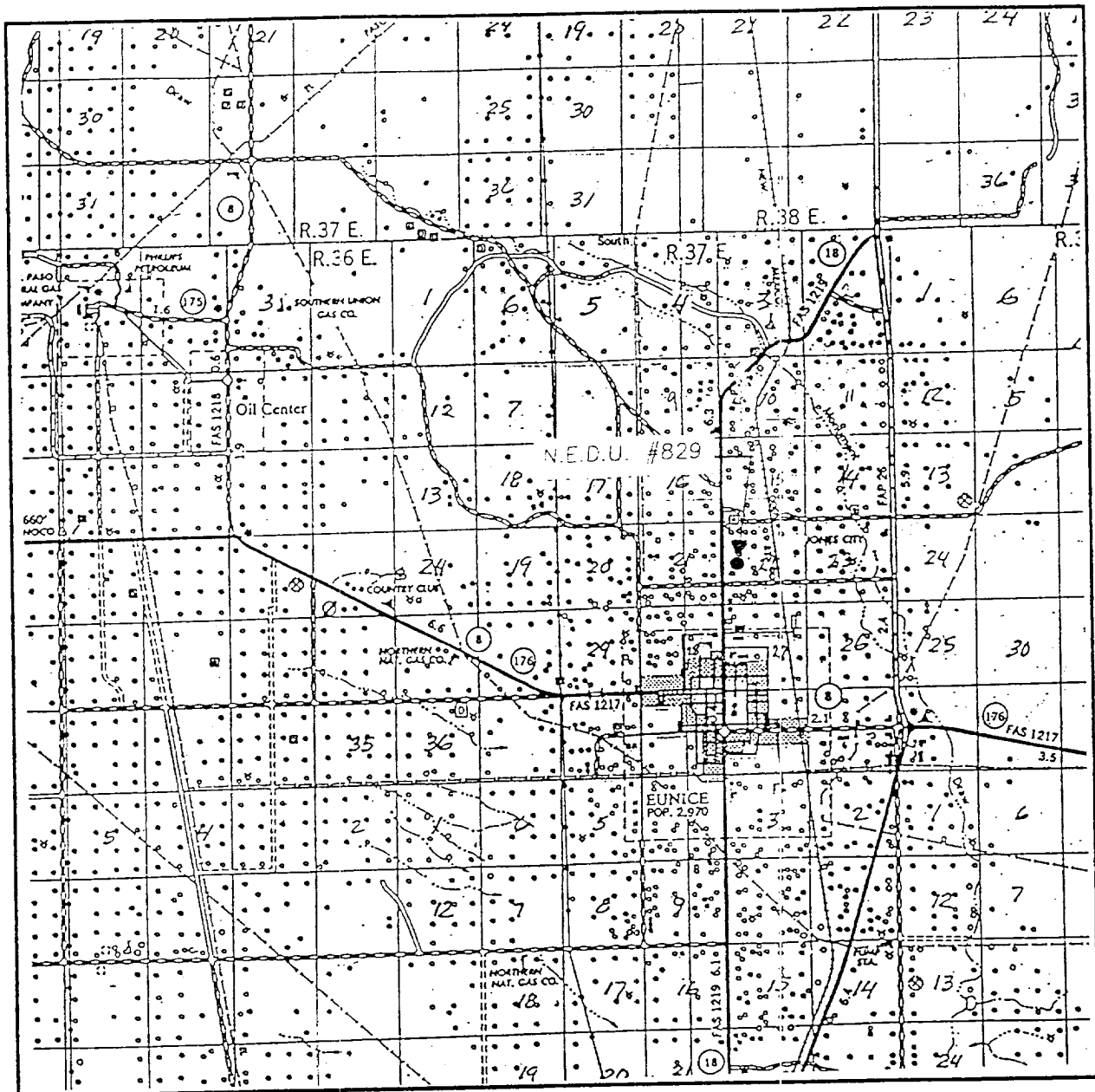
UL or lot No.	Section	Township	Range	Lot Idn	Feet from the	North/South line	Feet from the	East/West line	County

Dedicated Acres	Joint or Infill	Consolidation Code	Order No.
40			

NO ALLOWABLE WILL BE ASSIGNED TO THIS COMPLETION UNTIL ALL INTERESTS HAVE BEEN CONSOLIDATED  
OR A NON-STANDARD UNIT HAS BEEN APPROVED BY THE DIVISION

	NVSPC E2 NAD 27 534527.8 N 863423.3 E	<b>OPERATOR CERTIFICATION</b> I hereby certify the the information contained herein is true and complete to the best of my knowledge and belief. <u>Everett Ouzts</u> Signature Everett Ouzts Printed Name Eng. Tech. Title 12-13-99 Date
		<b>SURVEYOR CERTIFICATION</b> I hereby certify that the well location shown on this plat was plotted from field notes of actual surveys made by me or under my supervision, and that the same is true and correct to the best of my belief. NOVEMBER 23-30, 1999 Date Surveyed Signature & Seal of Professional Surveyor <u>Ronald J. Eidson</u> 12/8/99 Certificate No. RONALD J. EIDSON 3239 GARY EIDSON 12641 MACON McDONALD 12185

# VICINITY MAP



SCALE: 1" = 2 MILES

SEC. 22 TWP. 21-S RGE. 37-E

SURVEY N.M.P.M.

COUNTY LEA

DESCRIPTION 2493' FSL & 1122' FWL

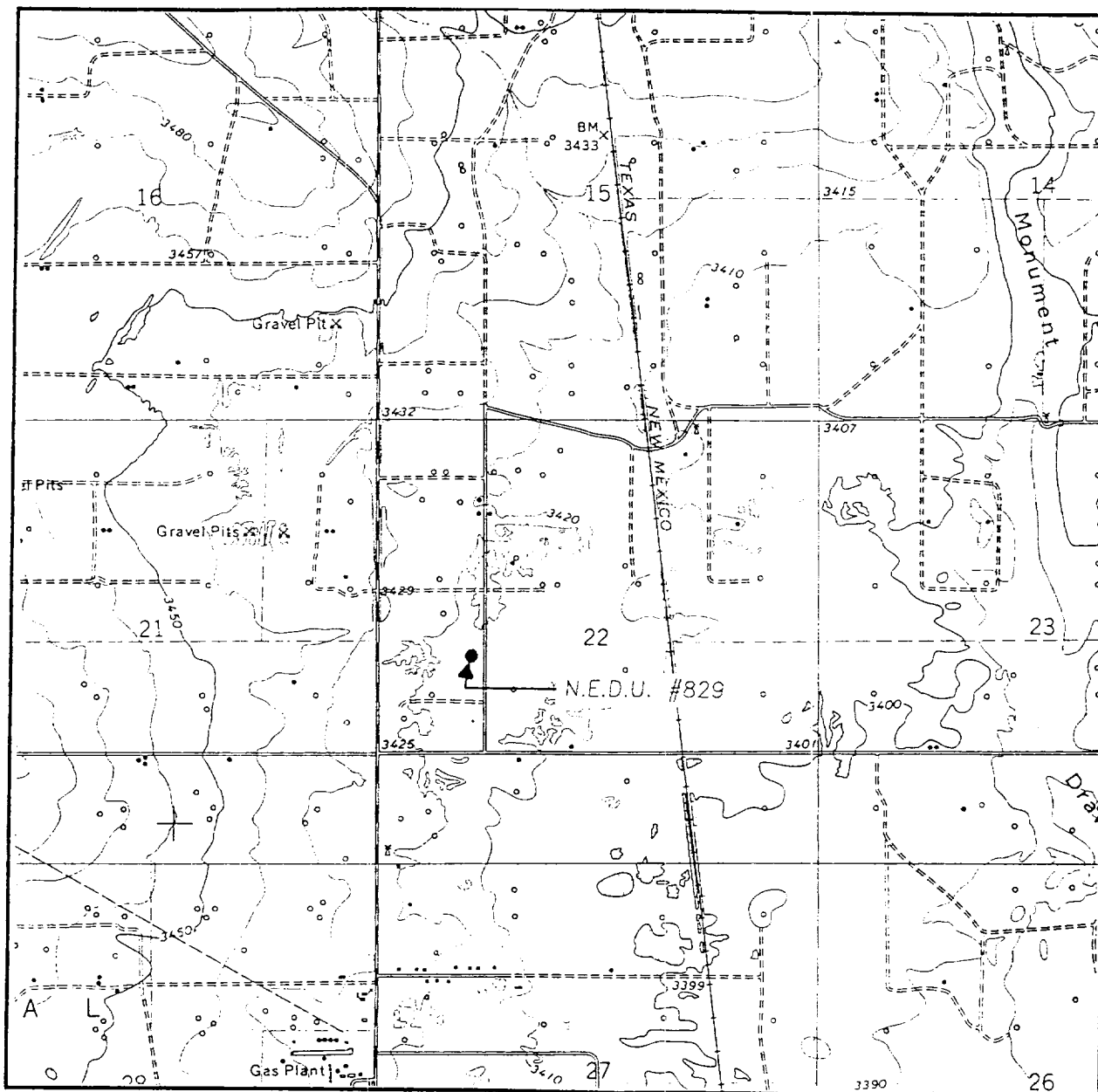
ELEVATION 3416

OPERATOR APACHE CORPORATION

LEASE N.E.D.U.

**JOHN WEST SURVEYING**  
**HOBBS, NEW MEXICO**  
**(505 393-3117)**

# LOCATION VERIFICATION MAP



SCALE: 1" = 2000'

CONTOUR INTERVAL:  
EUNICE - 10'

SEC. 22 TWP. 21-S RGE. 37-E

SURVEY N.M.P.M.

COUNTY LEA

DESCRIPTION 2493' FSL & 1122' FWL

ELEVATION 3416

OPERATOR APACHE CORPORATION

LEASE N.E.D.U.

U.S.G.S. TOPOGRAPHIC MAP

EUNICE, N.M.

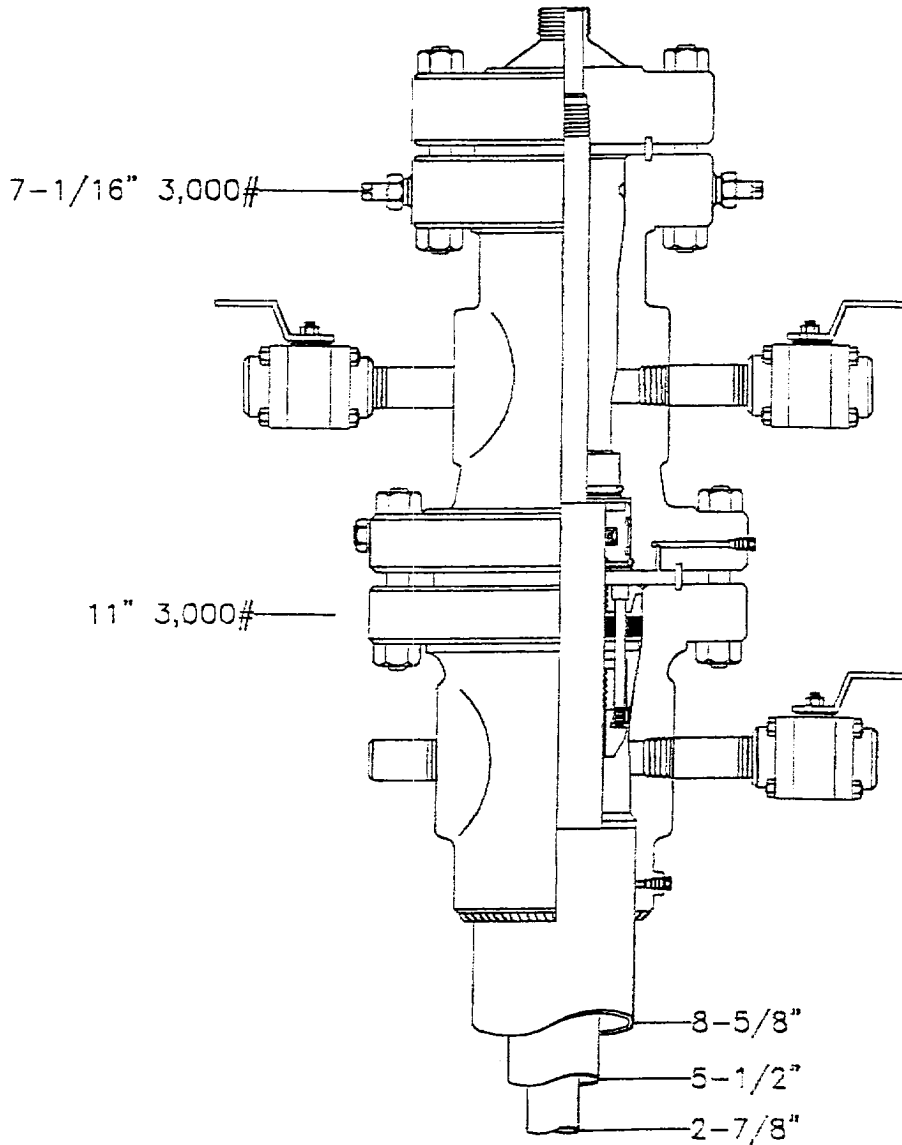
**JOHN WEST SURVEYING**  
**HOBBS, NEW MEXICO**  
**(505 393-3117)**

# Apache Corporation

WESTERN REGION  
NEDU

Eunice; Blincoy-Tubb-Drinkard, North  
LEA COUNTY, NEW MEXICO

SCALE:	DESIGN: 400	DATE: 4/21/98
FILE: MEDIAN.DWG	CHECKED: 400	LAST: 400



ELF  
\_\_\_\_\_  
ABOVE DATE DOES NOT  
INDICATE WHEN  
CONFIDENTIAL LOGS  
WILL BE RELEASED