

DISTRICT I
P.O. Box 1980, Hobbs, NM 88241-1980

State of New Mexico
Energy, Minerals and Natural Resources Department

Form C-102
Revised February 10, 1994
Submit to Appropriate District Office
State Lease - 4 Copies
Fee Lease - 3 Copies

DISTRICT II
P.O. Drawer DD, Artesia, NM 88211-0718

DISTRICT III
1000 Rio Brazos Rd., Aztec, NM 87410

DISTRICT IV
P.O. BOX 2088, SANTA FE, N.M. 87504-2088

OIL CONSERVATION DIVISION
P.O. Box 2088
Santa Fe, New Mexico 87504-2088

☐ AMENDED REPORT

WELL LOCATION AND ACREAGE DEDICATION PLAT

API Number 30-025-35158	Pool Code 23000	Pool Name EUNICE MONUMENT; GRAYBURG-SAN ANDRES
Property Code 2616	Property Name EMSU	Well Number 597
OGRID No. 4323	Operator Name CHEVRON U.S.A. PRODUCTION CO.	Elevation 3571

Surface Location

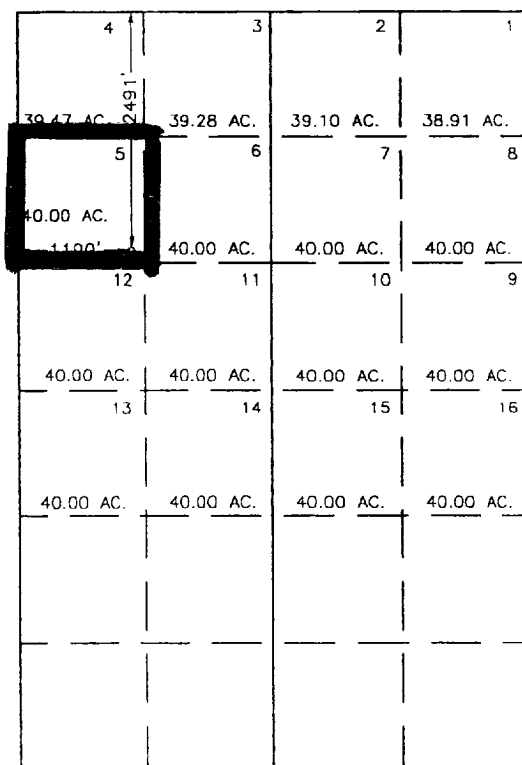
UL or lot No. LOT 5	Section 5	Township 21 S	Range 36 E	Lot Idn	Feet from the 2490	North/South line NORTH	Feet from the 1190	East/West line WEST	County LEA
------------------------	--------------	------------------	---------------	---------	-----------------------	---------------------------	-----------------------	------------------------	---------------

Bottom Hole Location If Different From Surface

UL or lot No.	Section	Township	Range	Lot Idn	Feet from the	North/South line	Feet from the	East/West line	County
---------------	---------	----------	-------	---------	---------------	------------------	---------------	----------------	--------

Dedicated Acres 40	Joint or Infill	Consolidation Code	Order No.
-----------------------	-----------------	--------------------	-----------

NO ALLOWABLE WILL BE ASSIGNED TO THIS COMPLETION UNTIL ALL INTERESTS HAVE BEEN CONSOLIDATED
OR A NON-STANDARD UNIT HAS BEEN APPROVED BY THE DIVISION



OPERATOR CERTIFICATION

I hereby certify that the information
contained herein is true and complete to the
best of my knowledge and belief.

J. K. Ripley
Signature
J. K. RIPLEY

Printed Name
REGULATORY O.A.

Title
9/11/00

Date

SURVEYOR CERTIFICATION

I hereby certify that the well location shown
on this plat was plotted from field notes of
actual surveys made by me or under my
supervision and that the same is true and
correct to the best of my belief.

AUGUST 10, 2000

Date Surveyed
Signature & Seal of
Professional Surveyor DC

Ronald J. Eidson
00-11-0969

Certificate No. RONALD J. EIDSON 3239
GARY EIDSON 12641