

District I
P.O. Box 1980, Hobbs, NM 88241-1980
District II
811 South First, Artesia, NM 88210
District III
1000 Rio Brazos Rd., Aztec, NM 87410
District IV
2040 South Pacheco, Santa Fe, NM 87505

State of New Mexico
Energy, Minerals & Natural Resources Department

OIL CONSERVATION DIVISION
2040 South Pacheco
Santa Fe, NM 87505

Form C-101
Revised October 18, 1994
Instructions on back
Submit to Appropriate District Office
State Lease - 6 Copies
Fee Lease - 5 Copies

☒ AMENDED REPORT

APPLICATION FOR PERMIT TO DRILL, RE-ENTER, DEEPEN, PLUGBACK, OR ADD A ZONE

1 Operator Name and Address Apache Corporation Attn: Dennis Bickford 2000 Post Oak Blvd. Ste. 100 Houston, Texas 77056-4400		2 OGRID Number 873
4 Property Code 22503		3 API Number 30-025-35274
5 Property Name Northeast Drinkard Unit		6 Well No. 717

7 Surface Location

UL or lot no.	Section	Township	Range	Lot Idn	Feet from the	North/South Line	Feet from the	East/West Line	County
N	15	21-S	37-E		44	South	2415	West	Lea

8 Proposed Bottom Hole Location If Different From Surface

UL or lot no.	Section	Township	Range	Lot Idn	Feet from the	North/South Line	Feet from the	East/West Line	County
9 Proposed Pool 1 Eunice; Bli-Tu-Dr, North (22900)					10 Proposed Pool 2				

11 Work Type Code N	12 Well Type Code O	13 Cable/Rotary R	14 Lease Type Code P	15 Ground Level Elevation 3415 KB
16 Multiple	17 Proposed Depth 6780	18 formation Bliinebry/Tubb/Drinkard	19 Contractor ASAP	20 Spud Date

21 Proposed Casing and Cement Program

Hole Size	Casing Size	Casing weight/foot	Setting Depth	Sacks of Cement	Estimated TOC
12 1/4"	8 5/8"	24# K55 STC	1300' or Anhydrite Form.	585 sxs	Circulate to Surf
7 7/8"	5 1/2"	17# K55 LTC	6780	477 sxs Class "C"	Circulate to Surf
				+360 sxs 50/50	
				Pozmix	

22 Describe the proposed program. If this application is to DEEPEN or PLUG BACK give the data on the present productive zone and proposed new productive zone. Describe the blowout prevention program, if any. Use additional sheets if necessary.

***Amending due to location change required by county commissioner. Moving 100' north of original location**
Propose to drill 12 1/4" hole to 1300' or 50' into Anhydrite, run & set 1300' of 8 5/8" and cement, circulate to surface
Lead: 400 sxs Class "C" +2%bwow Cal. Chloride + additives
Tail: 185 Class "C" +2%bwow Cal. Chloride + additives
Drill 7 7/8" hole to 6780', run & set 6780' of 5 1/2" and cement, (caliper + 20%) circulate to surface.
Lead: 477 sxs(36:65)Poz (Fly Ash) Class "C" +2%bwow Cal. Chloride + additives
Tail: 360 sxs(50:50)Poz (Fly Ash) Class "H" +2%bwow Sod. Chloride + additives
Blow Out Prevention: See attached copy

23 I hereby certify that the information given above is true and complete to the best of my knowledge and belief.

Signature: <i>Everett Ouzts</i>	OIL CONSERVATION DIVISION	
Printed Name: Everett Ouzts	Approved by: FIELD REPRESENTATIVE II	
Title: Engineering Technician	Title: GARY WILSON	
02/27/2001	Phone: 915-631-3733	Approval Date: 02/27/2001
		Conditions on Approval:

mp

State of New Mexico

Energy, Minerals and Natural Resources Department

Form C-102

Revised February 10, 1994

Submit to Appropriate District Office

State Lease - 4 Copies

Fee Lease - 3 Copies

OIL CONSERVATION DIVISION

P.O. Box 2088

Santa Fe, New Mexico 87504-2088

DISTRICT I

P.O. Box 1880, Hobbs, NM 88241-1880

DISTRICT II

P.O. Drawer DD, Artesia, NM 88211-0719

DISTRICT III

1000 Rio Brazos Rd., Artec, NM 87410

DISTRICT IV

P.O. BOX 2088, SANTA FE, N.M. 87504-2088

WELL LOCATION AND ACREAGE DEDICATION PLAT

XXAMENDED REPORT

API Number 30-025-25274	Pool Code 22900	Pool Name Eunice; Bli-Tu-Dr, North
Property Code 22503	Property Name N.E.D.U.	Well Number 717
OGRID No. 873	Operator Name APACHE CORPORATION	Elevation 3415

Surface Location

UL or lot No.	Section	Township	Range	Lot Idn	Feet from the	North/South line	Feet from the	East/West line	County
N	15	21 S	37 E		44	SOUTH	2415	WEST	LEA

Bottom Hole Location If Different From Surface

UL or lot No.	Section	Township	Range	Lot Idn	Feet from the	North/South line	Feet from the	East/West line	County

Dedicated Acres	Joint or Infill	Consolidation Code	Order No.

NO ALLOWABLE WILL BE ASSIGNED TO THIS COMPLETION UNTIL ALL INTERESTS HAVE BEEN CONSOLIDATED
OR A NON-STANDARD UNIT HAS BEEN APPROVED BY THE DIVISION

	<p>SPC NME NAD 1927 N=537323 E=864601</p>	<h3>OPERATOR CERTIFICATION</h3> <p>I hereby certify the the information contained herein is true and complete to the best of my knowledge and belief.</p> <p><i>Everett Ouzts</i> Signature Everett Ouzts Printed Name Eng. Tech Title 02/27/01 Date</p>
		<h3>SURVEYOR CERTIFICATION</h3> <p>I hereby certify that the well location shown on this plat was plotted from field notes of actual surveys made by me or under my supervision, and that the same is true and correct to the best of my belief.</p> <p>FEBRUARY 20, 2001</p> <p>Date Surveyed: A.W.B. Signature & Seal of Professional Surveyor <i>Ronald J. Eidson</i> 02/22/01 01-11-0265</p>
		<p>Certificate No. RONALD J. EIDSON 3239 GARY EIDSON 12641</p>

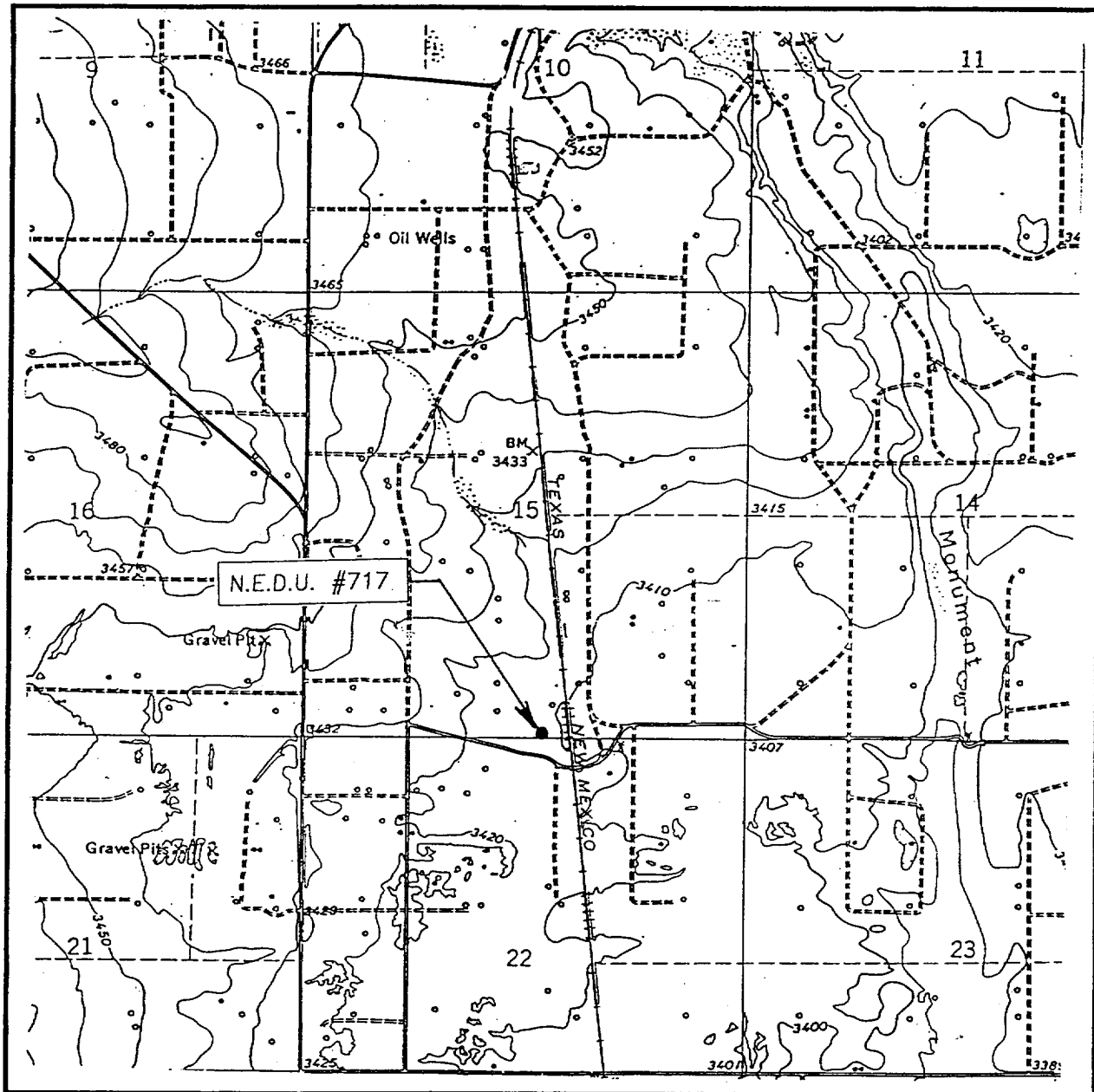


SEC. 15 TWP. 21-S RGE. 37-E
SURVEY _____ N.M.P.M. _____
COUNTY _____ LEA _____
DESCRIPTION 44' FSL & 2415' FWL
ELEVATION _____ 3415 _____
OPERATOR APACHE CORPORATION
LEASE _____ N.E.D.U. _____

JOHN WEST SURVEYING
HOBBS, NEW MEXICO
(505) 393-3117



LOCATION VERIFICATION MAP



SCALE: 1" = 2000'

CONTOUR INTERVAL:
EUNICE - 10'

SEC. 15 TWP. 21-S RGE. 37-E

SURVEY N.M.P.M.

COUNTY LEA

DESCRIPTION 44' FSL & 2415' FWL

ELEVATION 3415

OPERATOR APACHE CORPORATION

LEASE N.E.D.U.

U.S.G.S. TOPOGRAPHIC MAP

EUNICE, N.M.

JOHN WEST SURVEYING
HOBBS, NEW MEXICO
(505) 393-3117



District I
P.O. Box 1980, Hobbs, NM 88241-1980
District II
811 South First, Artesia, NM 88210
District III
1000 Rio Brazos Rd., Aztec, NM 87410
District IV
2040 South Pacheco, Santa Fe, NM 87505

State of New Mexico
Energy, Minerals & Natural Resources Department

OIL CONSERVATION DIVISION
2040 South Pacheco
Santa Fe, NM 87505

Form C-101
Revised October 18, 1994
Instructions on back
Submit to Appropriate District Office
State Lease - 6 Copies
Fee Lease - 5 Copies

☐ AMENDED REPORT

APPLICATION FOR PERMIT TO DRILL, RE-ENTER, DEEPEN, PLUGBACK, OR ADD A ZONE

1 Operator Name and Address Apache Corporation Attn: Dennis Bickford 2000 Post Oak Blvd. Ste. 100 Houston, Texas 77056-4400		2 OGRID Number 873
4 Property Code 22503		3 API Number 30-025-35274
5 Property Name Northeast Drinkard Unit		6 Well No. 717

7 Surface Location

UL or lot no.	Section	Township	Range	Lot Idn	Feet from the	North/South Line	Feet from the	East/West Line	County
C	22	21-S	37-E		56	North	2415	West	Lea

8 Proposed Bottom Hole Location If Different From Surface

UL or lot no.	Section	Township	Range	Lot Idn	Feet from the	North/South Line	Feet from the	East/West Line	County
9 Proposed Pool 1 Eunice; Bli-Tu-Dr, North (22900)					10 Proposed Pool 2				

11 Work Type Code N	12 Well Type Code O	13 Cable/Rotary R	14 Lease Type Code P	15 Ground Level Elevation 3415 KB
16 Multiple	17 Proposed Depth 6780	18 formation Bliinebry/Tubb/Drinkard	19 Contractor ASAP	20 Spud Date

21 Proposed Casing and Cement Program

Hole Size	Casing Size	Casing weight/foot	Setting Depth	Sacks of Cement	Estimated TOC
12 1/4"	8 5/8"	24# K55 STC	1300' or Anhydrite Form.	585 sxs	Circulate to Surf
7 7/8"	5 1/2"	17# K55 LTC	6780	477 sxs Class "C"	Circulate to Surf
				+360 sxs 50/50	
				Pozmix	

22 Describe the proposed program. If this application is to DEEPEN or PLUG BACK give the data on the present productive zone and proposed new productive zone. Describe the blowout prevention program, if any. Use additional sheets if necessary.

Propose to drill 12 1/4" hole to 1300' or 50' into Anhydrite, run & set 1300' of 8 5/8" and cement, circulate to surface
Lead: 400 sxs Class "C" +2%bwow Cal. Chloride + additives
Tail: 185 Class "C" +2%bwow Cal. Chloride + additives
Drill 7 7/8" hole to 6780', run & set 6780' of 5 1/2" and cement, (caliper + 20%) circulate to surface.
Lead: 477 sxs(36:65)Poz (Fly Ash) Class "C" +2%bwow Cal. Chloride + additives
Tail: 360 sxs(50:50)Poz (Fly Ash) Class "H" +2%bwow Sod. Chloride + additives
Blow Out Prevention: See attached copy

23 I hereby certify that the information given above is true and complete to the best of my knowledge and belief.

Signature: <i>Everett Ouzts</i>	OIL CONSERVATION DIVISION	
Printed Name: Everett Ouzts	Approved by: <i>Chris Williams</i> DISTRICT I SUPERVISOR	
Title: Engineering Technician	Approval Date:	Expiration Date:
11/21/2000	Phone: 915-631-3733	Conditions on Approval:

Permit Expires 1 Year From Approval Date Unless Drilling Underway



ISTRIC I
1. Box 1980, Hobbs, NM 88241-1980

ISTRIC II
1. Drawer DD, Artesia, NM 88211-0719

ISTRIC III
100 Rio Brason Rd., Aztec, NM 87410

ISTRIC IV
1. BOX 2088, SANTA FE, N.M. 87504-2088

State of New Mexico
Energy, Minerals and Natural Resources Department

Form C-102
Revised February 10, 1994
Submit to Appropriate District Office
State Lease - 4 Copies
Fee Lease - 3 Copies

OIL CONSERVATION DIVISION

P.O. Box 2088
Santa Fe, New Mexico 87504-2088

☐ AMENDED REPORT

WELL LOCATION AND ACREAGE DEDICATION PLAT

API Number 30-025- 35274	Pool Code 22900	Pool Name Eunice; Bli-Tu-Dr, North
Property Code 22503	Property Name N.E.D.U.	Well Number 717
OGRID No. 873	Operator Name APACHE CORPORATION	Elevation 3415

Surface Location

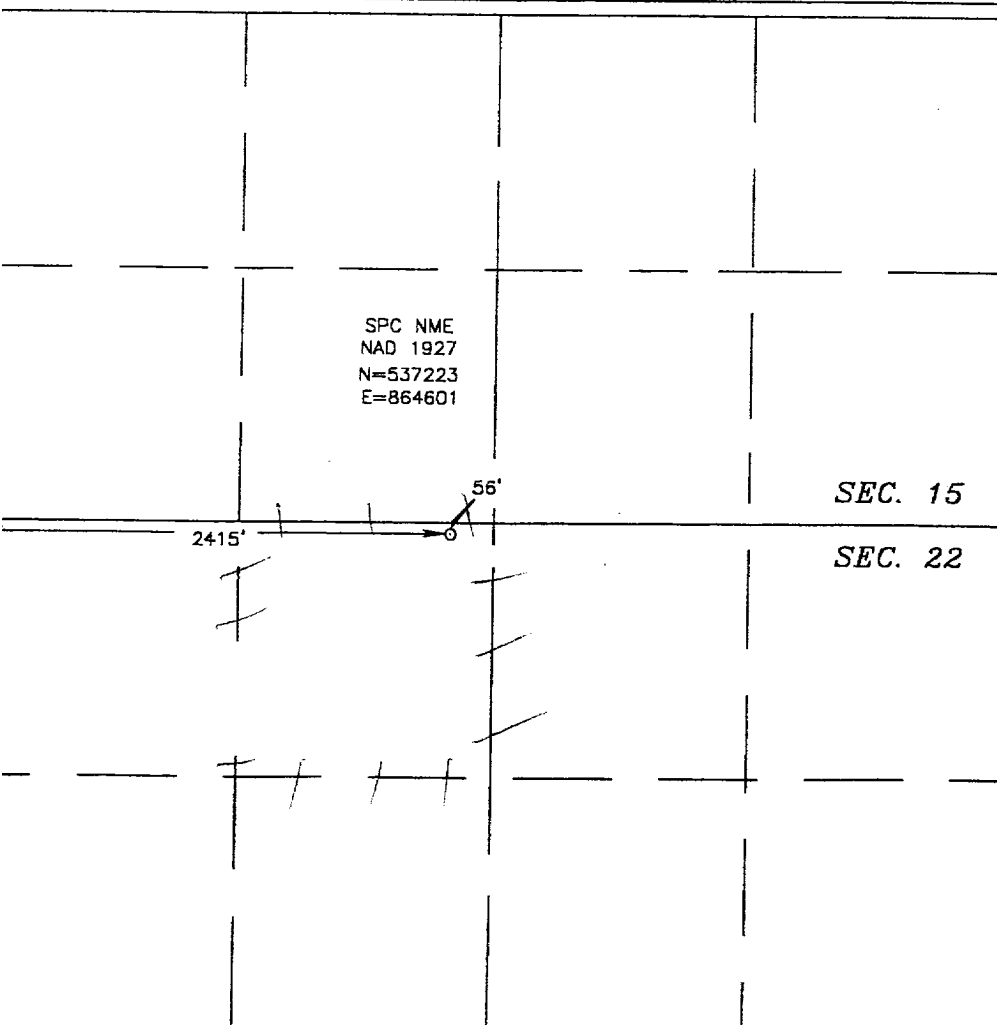
UL or lot No. C	Section 22	Township 21 S	Range 37 E	Lot Idn	Feet from the 56	North/South line NORTH	Feet from the 2415	East/West line WEST	County LEA
--------------------	---------------	------------------	---------------	---------	---------------------	---------------------------	-----------------------	------------------------	---------------

Bottom Hole Location If Different From Surface

UL or lot No.	Section	Township	Range	Lot Idn	Feet from the	North/South line	Feet from the	East/West line	County
---------------	---------	----------	-------	---------	---------------	------------------	---------------	----------------	--------

Dedicated Acres 40	Joint or Infill	Consolidation Code	Order No.
-----------------------	-----------------	--------------------	-----------

NO ALLOWABLE WILL BE ASSIGNED TO THIS COMPLETION UNTIL ALL INTERESTS HAVE BEEN CONSOLIDATED
OR A NON-STANDARD UNIT HAS BEEN APPROVED BY THE DIVISION



OPERATOR CERTIFICATION

I hereby certify the the information contained herein is true and complete to the best of my knowledge and belief.

Everett Ouzts
Signature

Everett Ouzts
Printed Name

Eng. Tech
Title

11/21/00
Date

SURVEYOR CERTIFICATION

I hereby certify that the well location shown on this plat was plotted from field notes of actual surveys made by me or under my supervision, and that the same is true and correct to the best of my belief.

NOVEMBER 10, 2000

Date Surveyed LMP
Signature & Seal of Professional Surveyor

Ronald J. Edson 11/17/00
00-11-1394

Certificate No. RONALD J. EDSON 3239
GARY EDSON 12641

