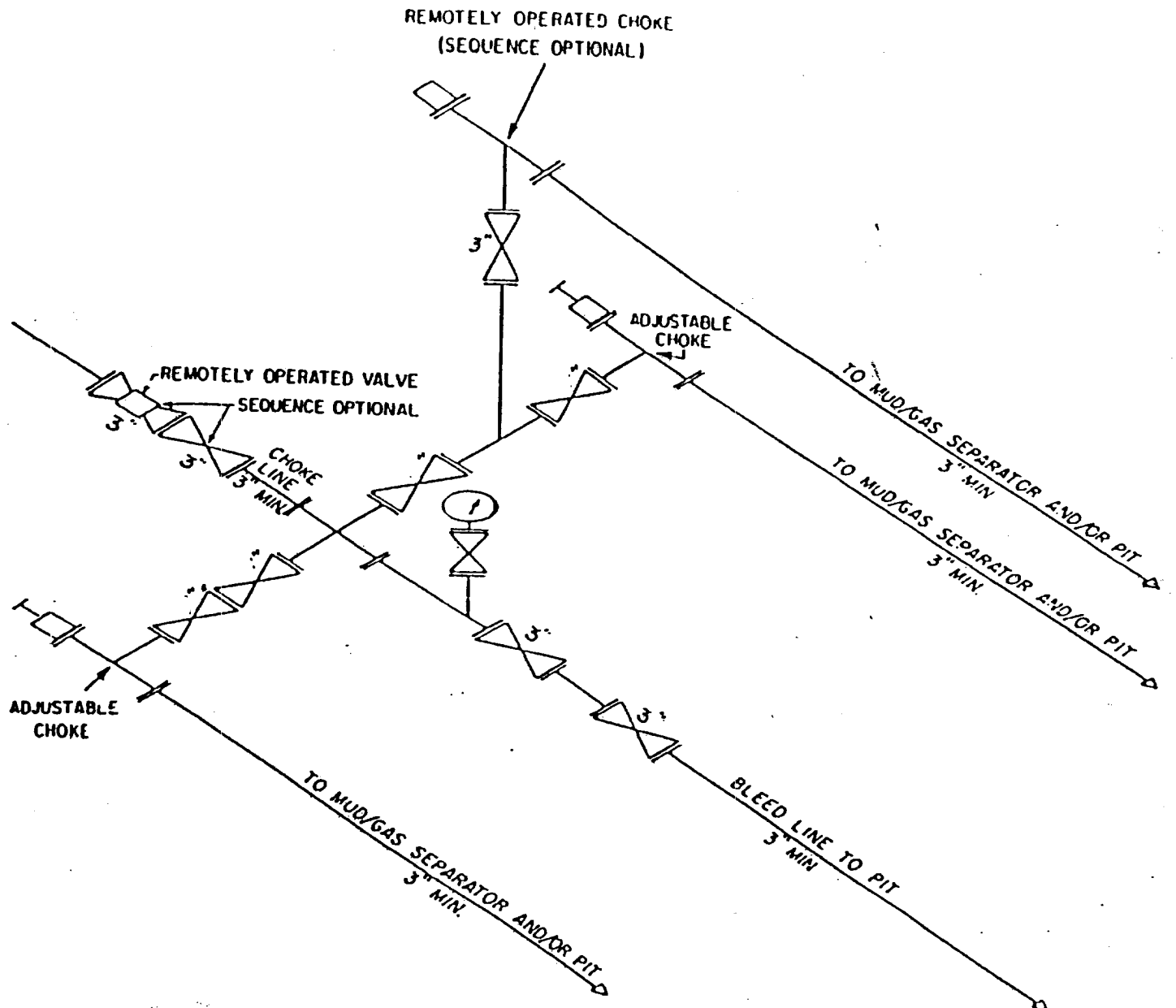


# 5 M CHOKE MANIFOLD EQUIPMENT



CHOKE MANIFOLD EQUIPMENT — CONFIGURATION MAY VARY

BTA OIL PRODUCERS  
 8700 JV-P Merchant No. 1  
 660' FNL & 660' FWL  
 Sec. 24, T21S, R34E  
 Lea County, NM

ABOVE DATE DOES NOT  
INDICATE WHEN  
CONFIDENTIAL LOGS  
WILL BE RELEASED

ELF