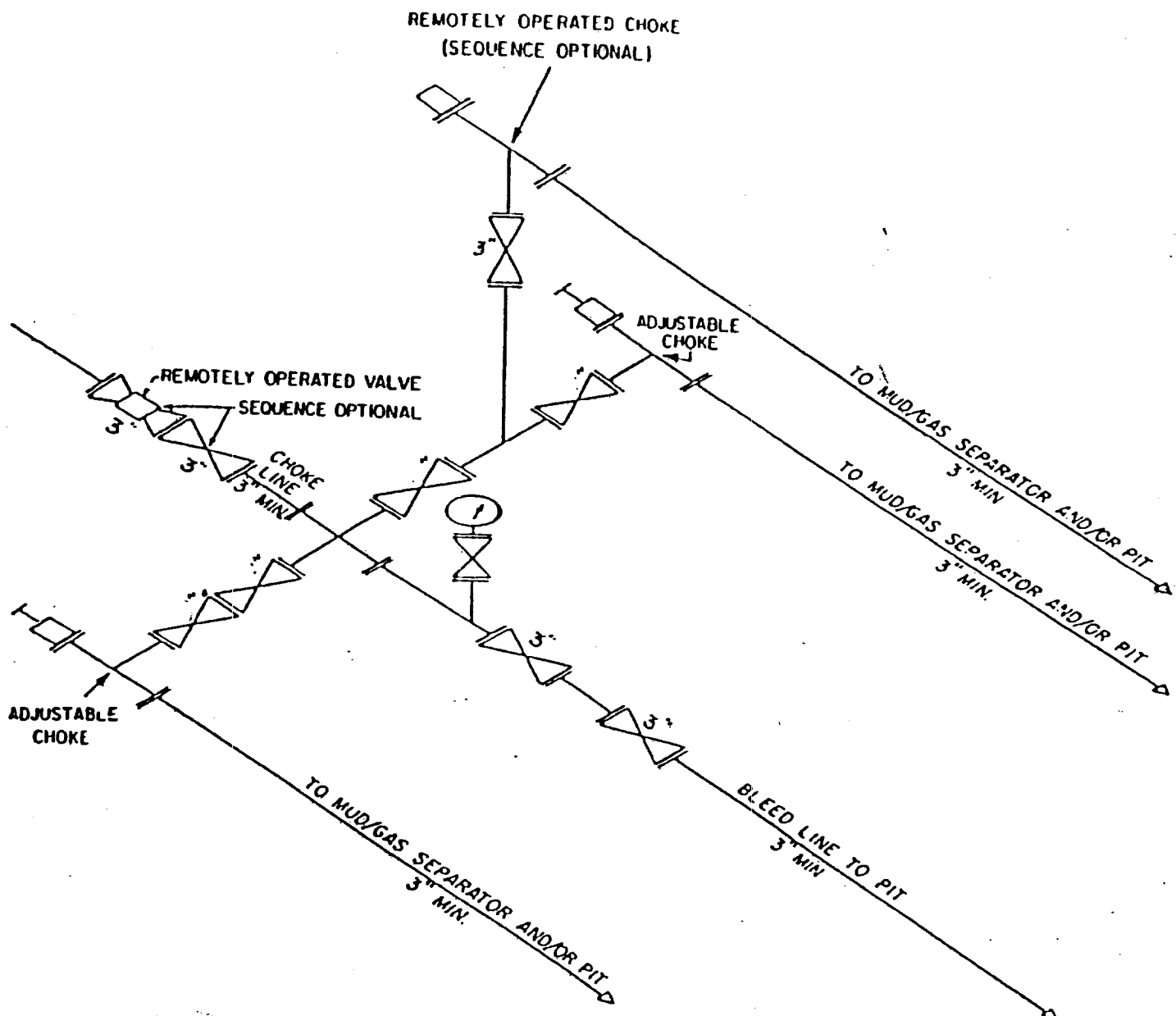


# 5 M CHOKE MANIFOLD EQUIPMENT



CHOKE MANIFOLD EQUIPMENT — CONFIGURATION MAY VARY

BTA OIL PRODUCERS  
 20005 JV-P State "23" Com No. 1  
 1650' FSL & 1980' FEL  
 Sec. 23, T21S, R34E  
 Lea County, NM