

District I  
PO Box 1980, Hobbs, NM 88241-1980

District II  
811 South First, Artesia, NM 88210

District III  
1000 Rio Brazos Rd., Aztec, NM 87410

District IV  
2040 South Pacheco, Santa Fe, NM 87505

State of New Mexico  
Energy, Minerals & Natural Resources Department

OIL CONSERVATION DIVISION  
2040 South Pacheco  
Santa Fe, NM 87505

Form C-101  
Revised October 18, 1994  
Instructions on back  
Submit to Appropriate District Office  
State Lease - 6 Copies  
Fee Lease - 5 Copies

☐ AMENDED REPORT

APPLICATION FOR PERMIT TO DRILL, RE-ENTER, DEEPEN, PLUGBACK, OR ADD A ZONE

Operator Name and Address Nearburg Producing Company 3300 North "A" Street Building 2, Suite 120 Midland, TX 79705		OGRID Number 015742
		API Number 30 - 025 - 35309
Property Code 27043	Property Name Side Pocket "14" State Com	Well No. 1

Surface Location

UL or lot no.	Section	Township	Range	Lot Idn	Feet from the	North/South line	Feet from the	East/West Line	County
I	14	21S	34E		1980	South	660	East	Lea

Proposed Bottom Hole Location If Different From Surface

UL or lot no.	Section	Township	Range	Lot Idn	Feet from the	North/South line	Feet from the	East/West Line	County
Proposed Pool 1 Wilson Morrow Gas					Proposed Pool 2				

Work Type Code N	Well Type Code G	Cable/Rotary R	Lease Type Code S	Ground Level Elevation 3670
Multiple No	Proposed Depth 13500	Formation Morrow	Contractor Patterson	Spud Date 03-01-01

Proposed Casing and Cement Program

Hole Size	Casing Size	Casing weight/foot	Setting Depth	Sacks of Cement	Estimated TOC
17-1/2"	13-3/8"	65#	1350'	800 sxs	Surface
12-1/4"	9-5/8"	36# & 40#	5700'	500 sxs	
8-3/4"	5-1/2"	26# & 29#	13,500'	500 sxs	

Describe the proposed program. If this application is to DEEPEN or PLUG BACK give the data on the present productive zone and proposed new productive zone. Describe the blowout prevention program, if any. Use additional sheets if necessary.

Propose to drill the well to sufficient depth to evaluate the Morrow formation. After reaching TD, logs will be run and casing set if the evaluation is positive. Perforate, test and stimulate as necessary to establish production.

Acreage dedication is 320 acres; ~~1/2~~ of Section 14.

5/2 per Butch

Permit expires 12/31/2000  
Data Update during underway

I hereby certify that the information given above is true and complete to the best of my knowledge and belief. Signature: <i>Kim Stewart</i> Printed name: Kim Stewart Title: Regulatory Analyst Date: 12-14-00		OIL CONSERVATION DIVISION Approved By: <i>[Signature]</i> Title: <i>[Signature]</i> Approval Date: DEC 21 2000 Expiration Date: Conditions of Approval: Attached: <input type="checkbox"/>	
---	--	--	--

DISTRICT I  
P.O. Box 1980, Hobbs, NM 88241-1980

DISTRICT II  
P.O. Drawer DD, Artesia, NM 88211-0719

DISTRICT III  
1000 Rio Brazos Rd., Artec, NM 87410

DISTRICT IV  
P.O. Box 2088, Santa Fe, NM 87504-2088

State of New Mexico  
Energy, Minerals and Natural Resources Department

Form C-102  
Revised February 10, 1994  
Submit to Appropriate District Office  
State Lease - 4 Copies  
Fee Lease - 3 Copies

OIL CONSERVATION DIVISION

P.O. Box 2088  
Santa Fe, New Mexico 87504-2088

☐ AMENDED REPORT

WELL LOCATION AND ACREAGE DEDICATION PLAT

API Number 30-025-35309	Pool Code 87460	Pool Name Wilson Morrow Gas
Property Code 27043	Property Name SIDE POCKET "14" STATE COM.	Well Number 1
OGRID No. 15742	Operator Name NEARBURG PRODUCING COMPANY	Elevation 3670

Surface Location

UL or lot No. 1	Section 14	Township 21 S	Range 34 E	Lot Idn	Feet from the 1980	North/South line SOUTH	Feet from the 660	East/West line EAST	County LEA
--------------------	---------------	------------------	---------------	---------	-----------------------	---------------------------	----------------------	------------------------	---------------

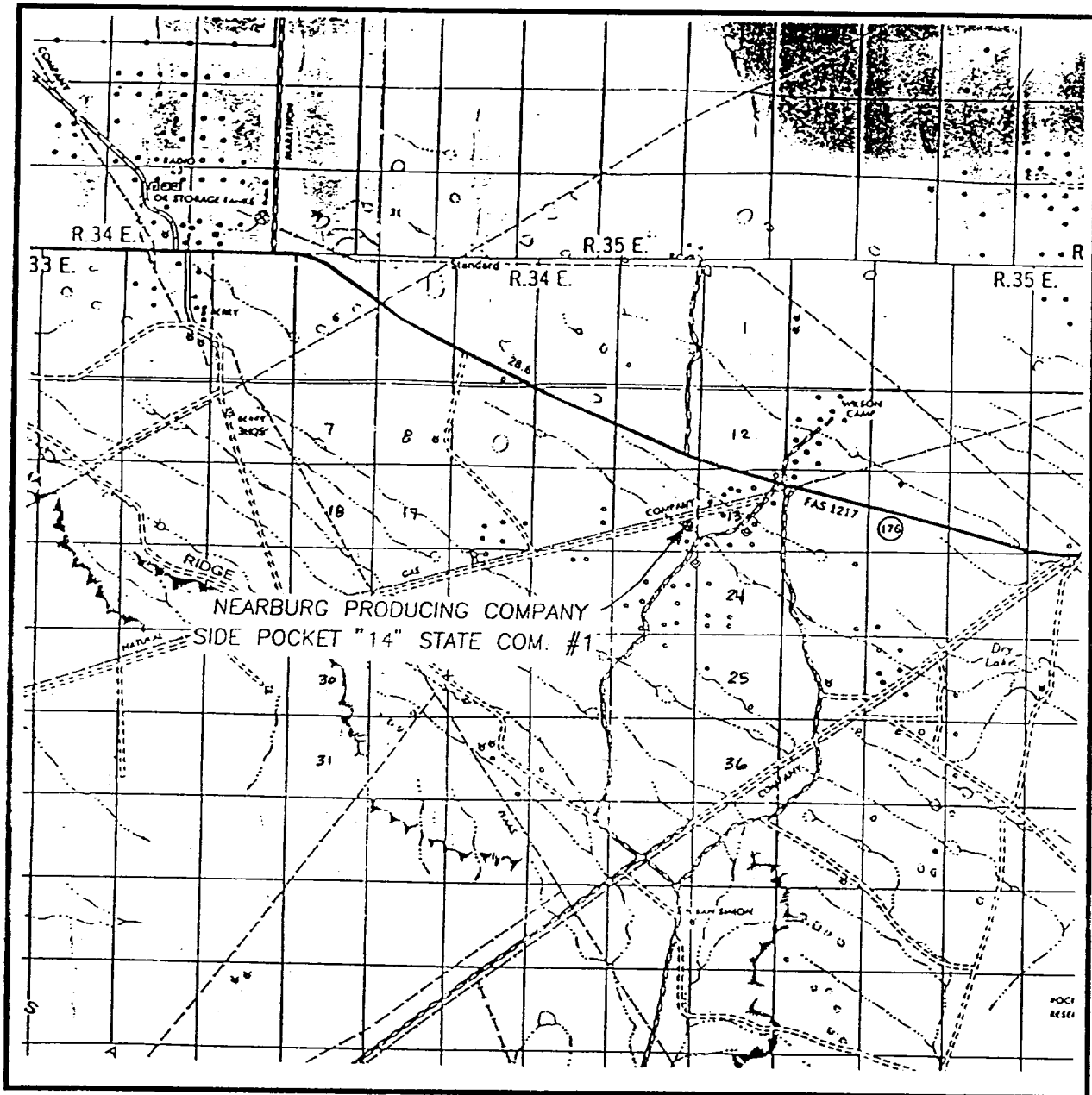
Bottom Hole Location If Different From Surface

UL or lot No.	Section	Township	Range	Lot Idn	Feet from the	North/South line	Feet from the	East/West line	County
Dedicated Acres 320 5/2	Joint or Infill N	Consolidation Code	Order No.						

NO ALLOWABLE WILL BE ASSIGNED TO THIS COMPLETION UNTIL ALL INTERESTS HAVE BEEN CONSOLIDATED  
Per Butch OR A NON-STANDARD UNIT HAS BEEN APPROVED BY THE DIVISION

	<b>OPERATOR CERTIFICATION</b>  I hereby certify the the information contained herein is true and complete to the best of my knowledge and belief.   Signature Kim Stewart Printed Name Regulatory Analyst Title December 14, 2000 Date
	<b>SURVEYOR CERTIFICATION</b>  I hereby certify that the well location shown on this plat was plotted from field notes of actual surveys made by me or under my supervision, and that the same is true and correct to the best of my belief.  OCTOBER 20, 2000 Date Surveyed JLP Signature & Seal of Professional Surveyor  W.O. Num. 00-11-1314 Certificate No. RONALD L. EDSON, 3239 GARY G. EDSON, 12641

# VICINITY MAP



SCALE: 1" = 2 MILES

SEC. 14 TWP. 21-S RGE. 34-E

SURVEY N.M.P.M.

COUNTY LEA

DESCRIPTION 1980' FSL & 660' FEL

ELEVATION 3670

OPERATOR NEARBURG PRODUCING COMPANY

LEASE SIDE POCKET "14" STATE COM.

**JOHN WEST SURVEYING**  
**HOBBS, NEW MEXICO**  
**(505) 393-3117**

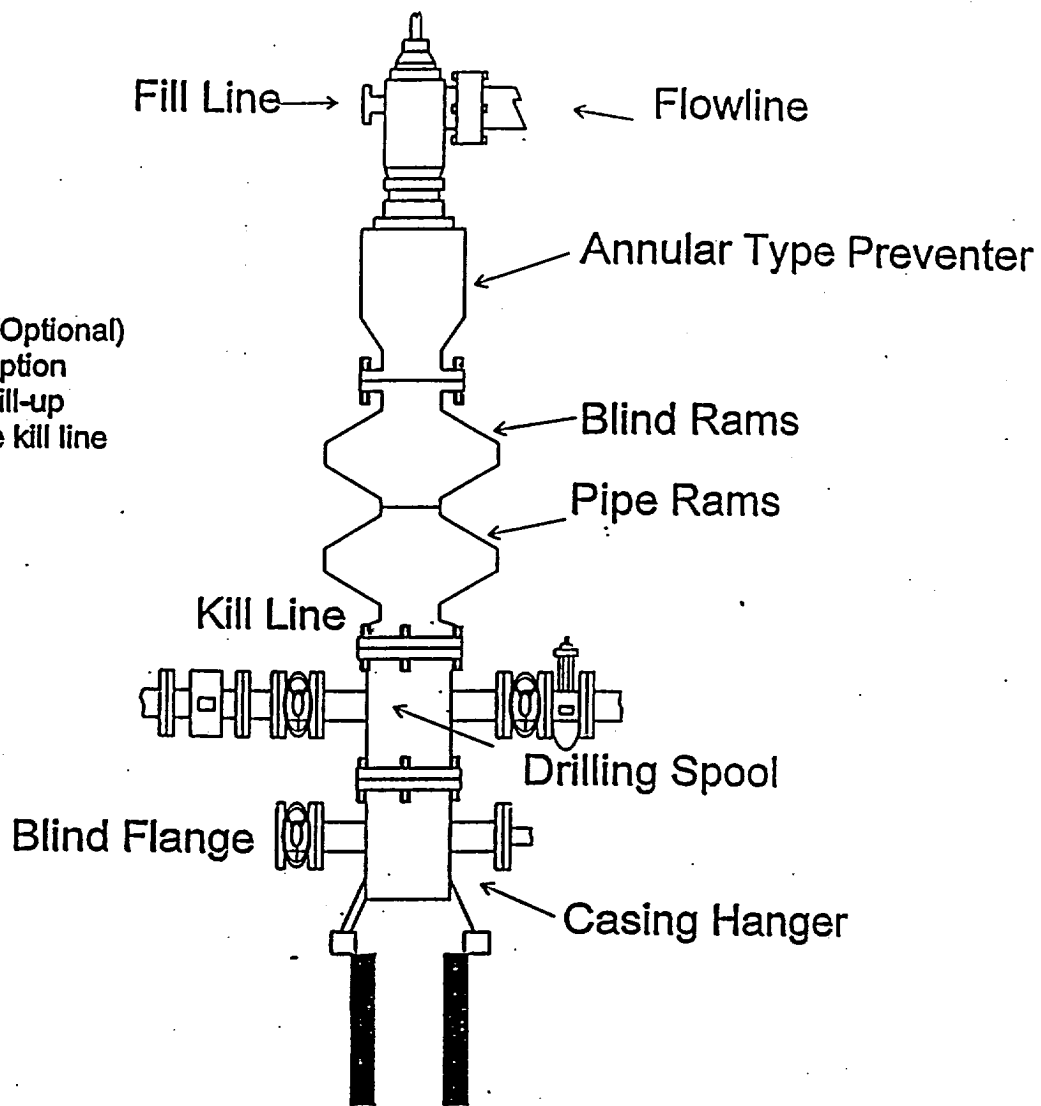


CONTOUR INTERVAL - 10'

SAN SIMON RANCH, N.M.

**JOHN WEST SURVEYING  
HOBBS, NEW MEXICO  
(505) 393-3117**

HEARNBURG PRODUCING COMPANY  
BOPE SCHEMATIC



Rotating Head (Optional)  
Drilling Nipple option  
must include a fill-up  
line. Do not use kill line  
for fill up.

1500 Series

JEARBURG PRODUCING COMP Y  
CHOKE MANIFOLD  
5M SERVICE

