

DISTRICT I
1626 N. French Dr., Hobbs, NM 88240

DISTRICT II
P.O. Drawer 22, Artesia, NM 88211-0719

DISTRICT III
1000 Rio Grande Rd., Aztec, NM 87410

DISTRICT IV
2040 South Pacheco, Santa Fe, NM 87505

State of New Mexico
Energy, Minerals & Natural Resources Department

Form C-102
Revised August 16, 2000
Submit to Appropriate District Office
State Lease - 4 Copies
Fee Lease - 3 Copies

OIL CONSERVATION DIVISION
2040 South Pacheco
Santa Fe, NM 87505

☒ AMENDED REPORT

WELL LOCATION AND ACREAGE DEDICATION PLAT

API Number 30-025-35325	Pool Code	Pool Name Osudo:Morrow, West
Property Code 27059	Property Name BUTKUS "2" STATE	Well Number 1
OGRID No. 148111	Operator Name SOUTHWESTERN ENERGY PRODUCTION, CO.	Elevation 3705

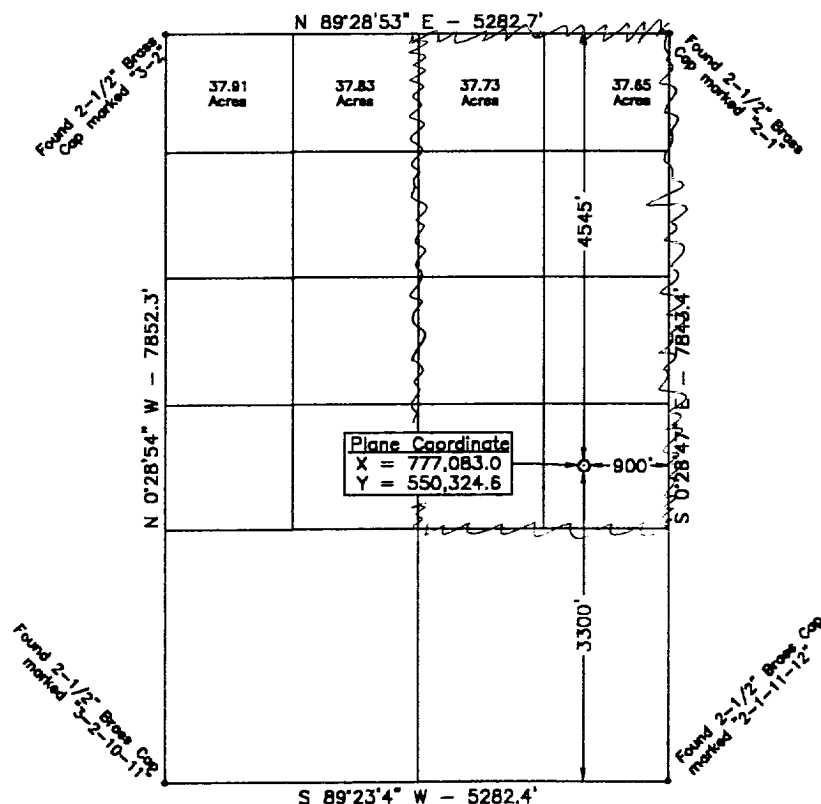
Surface Location

UL or lot No. 16	Section 2	Township 21 S	Range 34 E	Lot Idn	Feet from the 3300	North/South line SOUTH	Feet from the 900	East/West line EAST	County LEA
---------------------	--------------	------------------	---------------	---------	-----------------------	---------------------------	----------------------	------------------------	---------------

Bottom Hole Location If Different From Surface

UL or lot No.	Section	Township	Range	Lot Idn	Feet from the	North/South line	Feet from the	East/West line	County
Dedicated Acres 301.52	Joint or Infill	Consolidation Code	Order No.						

NO ALLOWABLE WILL BE ASSIGNED TO THIS COMPLETION UNTIL ALL INTERESTS HAVE BEEN CONSOLIDATED OR A NON-STANDARD UNIT HAS BEEN APPROVED BY THE DIVISION



OPERATOR CERTIFICATION

I hereby certify that the information contained herein is true and complete to the best of my knowledge and belief.

Signature

Cathy Rowan

Printed Name

Sr. Engineering Tech.

Title

January 26, 2001

Date

SURVEYOR CERTIFICATION

I hereby certify that the well location shown on this plat was plotted from field notes of actual surveys made by me or under my supervision and that the same is true and correct to the best of my belief.

January 25, 2001

Date Surveyed

Signature & Seal of Professional Surveyor

W.O. Num. 2000-0662

Certificate No. MACON McDONALD 12185

Scale: 1" = 2000'