

DISTRICT I
1635 N. French Dr., Hobbs, NM 88240

DISTRICT II
P.O. Drawer 80, Artesia, NM 88211-0719

DISTRICT III
1000 Elie Branch Rd., Aztec, NM 87410

DISTRICT IV
2040 South Pacheco, Santa Fe, NM 87505

State of New Mexico
Energy, Minerals & Natural Resources Department

Form C-102
Revised August 18, 2000
Submit to Appropriate District Office
State Lease - 4 Copies
Fee Lease - 3 Copies

OIL CONSERVATION DIVISION
2040 South Pacheco
Santa Fe, NM 87505

AMENDED REPORT

WELL LOCATION AND ACREAGE DEDICATION PLAT

API Number 30-025-35325	Pool Code 82240	Pool Name Osudo;Morrow, West
Property Code 27059	Property Name BUTKUS "2" STATE	Well Number 1
OGRID No. 148111	Operator Name SOUTHWESTERN ENERGY PRODUCTION, CO.	Elevation 3705

Surface Location

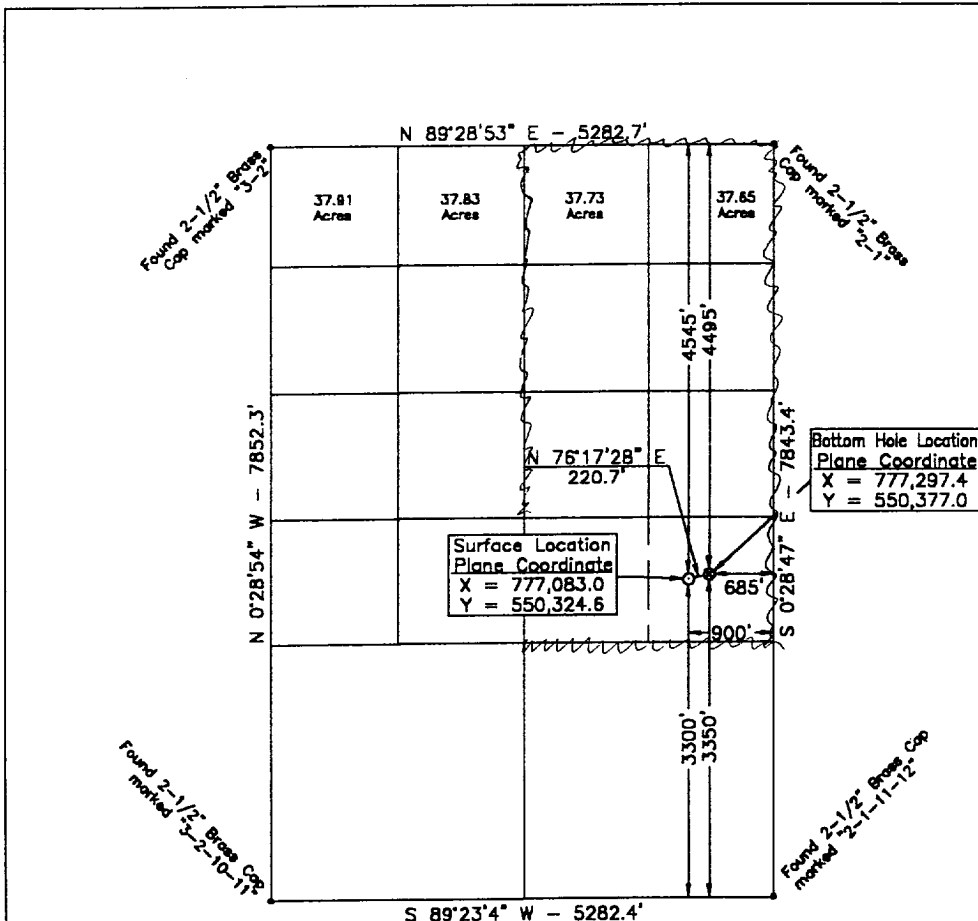
UL or lot No.	Section	Township	Range	Lot Idn	Feet from the	North/South line	Feet from the	East/West line	County
16	2	21 S	34 E		3300	SOUTH	900	EAST	LEA

Bottom Hole Location If Different From Surface

UL or lot No.	Section	Township	Range	Lot Idn	Feet from the	North/South line	Feet from the	East/West line	County
16	2	21 S	34 E		3350	SOUTH	685	EAST	LEA

Dedicated Acres 301.52	Joint or Infill	Consolidation Code	Order No.
---------------------------	-----------------	--------------------	-----------

NO ALLOWABLE WILL BE ASSIGNED TO THIS COMPLETION UNTIL ALL INTERESTS HAVE BEEN CONSOLIDATED OR A NON-STANDARD UNIT HAS BEEN APPROVED BY THE DIVISION



OPERATOR CERTIFICATION

I hereby certify the the information contained herein is true and complete to the best of my knowledge and belief.

Cathy Rowan
Signature

Cathy Rowan
Printed Name

Sr. Engineering Tech.
Title

January 4, 2001
Date

Date

SURVEYOR CERTIFICATION

I hereby certify that the well location shown on this plat was plotted from field notes of actual surveys made by me or under my supervision and that the same is true and correct to the best of my belief.

January 3, 2001
Date Surveyed

Signature & Seal of Professional Surveyor
12185

W.O. Num: 2000-0662

Certificate No. MACON McDONALD 12185

Amended

Scale: 1" = 2000'