

District I
P.O. Box 1980, Hobbs, NM 88241-1980
District II
811 South First, Artesia, NM 88210
District III
1000 Rio Brazos Rd., Aztec, NM 87410
District IV
2040 South Pacheco, Santa Fe, NM 87505

State of New Mexico
Energy, Minerals & Natural Resources Department

OIL CONSERVATION DIVISION
2040 South Pacheco
Santa Fe, NM 87505

Form C-101
Revised October 18, 1994
Instructions on back
Submit to Appropriate District Office
State Lease - 6 Copies
Fee Lease - 5 Copies

☐ AMENDED REPORT

APPLICATION FOR PERMIT TO DRILL, RE-ENTER, DEEPEN, PLUGBACK, OR ADD A ZONE

1 Operator Name and Address Apache Corporation attn: Dennis Bickford; 3rd floor 2000 Post Oak Blvd. Ste. 100 Houston, Texas 77056-4400		2 OGRID Number 873
		3 API Number 30-025-35351
4 Property Code 23118	5 Property Name Taylor Glenn	6 Well No. 12

7 Surface Location

UL or lot no. H/8	Section 4	Township 21-S	Range 37-E	Lot Idn	Feet from the 2310	North/South Line North	Feet from the 810	East/West Line East	County Lea
----------------------	--------------	------------------	---------------	---------	-----------------------	---------------------------	----------------------	------------------------	---------------

8 Proposed Bottom Hole Location If Different From Surface

UL or lot no.	Section	Township	Range	Lot Idn	Feet from the	North/South Line	Feet from the	East/West Line	County
9 Proposed Pool 1 Penrose Skelly: Grayburg (50350)					10 Proposed Pool 2				

11 Work Type Code N	12 Well Type Code O	13 Cable/Rotary R	14 Lease Type Code S	15 Ground Level Elevation 3463' KB
16 Multiple	17 Proposed Depth 4450'	18 formation Grayburg	19 Contractor	20 Spud Date ASAP

21 Proposed Casing and Cement Program

Hole Size	Casing Size	Casing weight/foot	Setting Depth	Sacks of Cement	Estimated TOC
12 1/4"	8 5/8"	24#	1100'	450 sxs	Circulate to Surf
7 7/8"	5 1/2"	17#	4450'	700 sxs	Circulate to Surf

22 Describe the proposed program. If this application is to DEEPEN or PLUG BACK give the data on the present productive zone and proposed new productive zone. Describe the blowout prevention program, if any. Use additional sheets if necessary.

Propose to drill 12 1/4" hole to 1100' or 50' into Anhydrite Formation, run & set 1100' of 8 5/8" and cement,
Lead: Class "C" + 2% calcium chloride + 0.25 lb/sx cello flake + 0.005% gps FP-6L + 6% bentonite.
Tail: Class "C" + 2% calcium chloride + 0.005 gps FP-6L.
Drill 7 7/8" hole to 4450', run & set 4450' of 5 1/2" casing and cement.
Lead: 35:65 POZ: Class "C" + 5% sodium chloride + 0.25 lb/sx cello flake + 0.005 gps FP-6L + 8% bentonite.
Tail: 50:50 POZ: Class "H" + 5% sodium + .25 lb/sx cello flake + 1% FL-25 + 0.005 gps FP-6L + bentonite.

Blow Out Prevention: See attached copy

23 I hereby certify that the information given above is true and complete to the best of my knowledge and belief.

Signature: <i>Everett Ouzts</i>	OIL CONSERVATION DIVISION	
Printed Name: Everett Ouzts	Approved by:	
Title: Engineering Technician	Title: <i>10/13/01</i>	
Date: 01/15/2001	Approval Date:	Expiration Date:
Phone: 915-631-3733	Conditions on Approval:	

Permit Expires 1 Year From Approval
Date 01-15-2002 Drilling Underway

Handwritten signature

DISTRICT I
P.O. Box 1980, Hobbs, NM 88241-1980

DISTRICT II
P.O. Drawer DD, Artesia, NM 88211-0719

DISTRICT III
1000 Rio Brazos Rd., Aztec, NM 87410

DISTRICT IV
P.O. BOX 2088, SANTA FE, N.M. 87504-2088

State of New Mexico

Energy, Minerals and Natural Resources Department

Form C-102
Revised February 10, 1994
Submit to Appropriate District Office
State Lease - 4 Copies
Fee Lease - 3 Copies

OIL CONSERVATION DIVISION

P.O. Box 2088
Santa Fe, New Mexico 87504-2088

☐ AMENDED REPORT

WELL LOCATION AND ACREAGE DEDICATION PLAT

API Number 30-025-3535	Pool Code 50350	Pool Name Penrose Skelly;Grayburg
Property Code 23118	Property Name TAYLOR GLENN	Well Number 12
OGRID No. 873	Operator Name APACHE CORPORATION	Elevation 3463

Surface Location

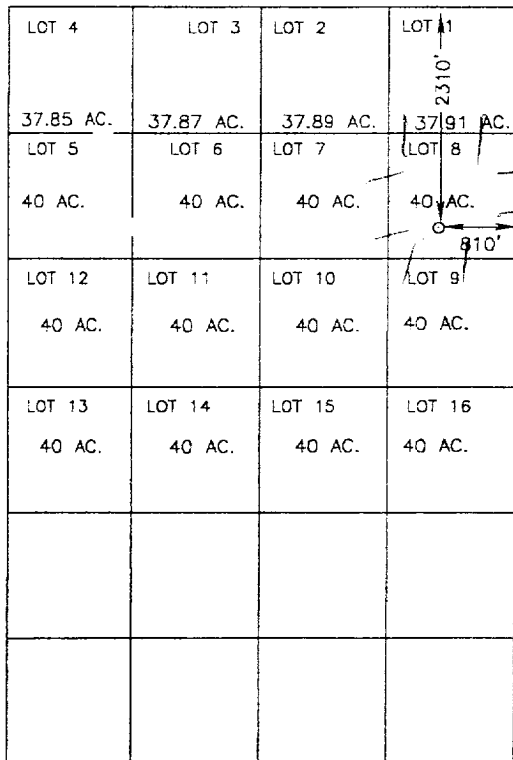
UL or lot No. 8	Section 4	Township 21S	Range 37E	Lot Idn	Feet from the 2310	North/South line NORTH	Feet from the 810'	East/West line EAST	County LEA
--------------------	--------------	-----------------	--------------	---------	-----------------------	---------------------------	-----------------------	------------------------	---------------

Bottom Hole Location If Different From Surface

UL or lot No.	Section	Township	Range	Lot Idn	Feet from the	North/South line	Feet from the	East/West line	County
Dedicated Acres	Joint or Infill	Consolidation Code	Order No.						

NO ALLOWABLE WILL BE ASSIGNED TO THIS COMPLETION UNTIL ALL INTERESTS HAVE BEEN CONSOLIDATED
OR A NON-STANDARD UNIT HAS BEEN APPROVED BY THE DIVISION

SPC NME
NAD 1927
N=553341
E=861338



SCALE: 1" = 2000'

OPERATOR CERTIFICATION

I hereby certify the the information
contained herein is true and complete to the
best of my knowledge and belief.

Everett Ouzts
Signature

Everett Ouzts
Printed Name

Eng. Tech
Title

01/15/01
Date

SURVEYOR CERTIFICATION

I hereby certify that the well location shown
on this plat was plotted from field notes of
actual surveys made by me or under my
supervision and that the same is true and
correct to the best of my belief.

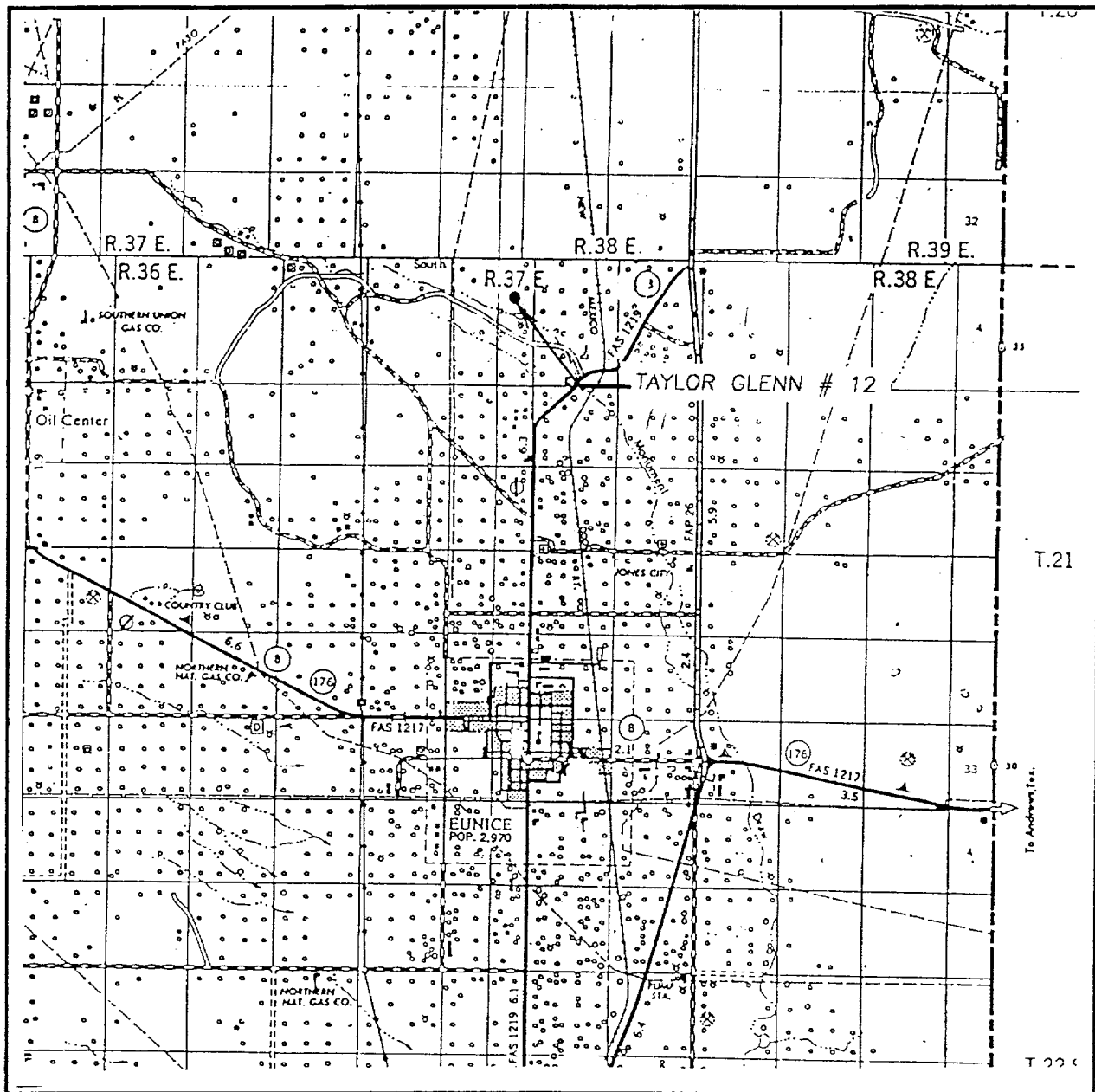
JANUARY 3, 2001

Date Surveyed
Signature & Seal of
Professional Surveyor

Ronald J. Eidson 4/10/01
00-11-1637

Certificate No. RONALD J. EIDSON 3239
GARY EIDSON 12841

VICINITY MAP



SCALE: 1" = 2 MILES

SEC. 4 TWP. 21-S RGE. 37-E

SURVEY N.M.P.M.

COUNTY LEA

DESCRIPTION 2310'FNL & 810'FEL

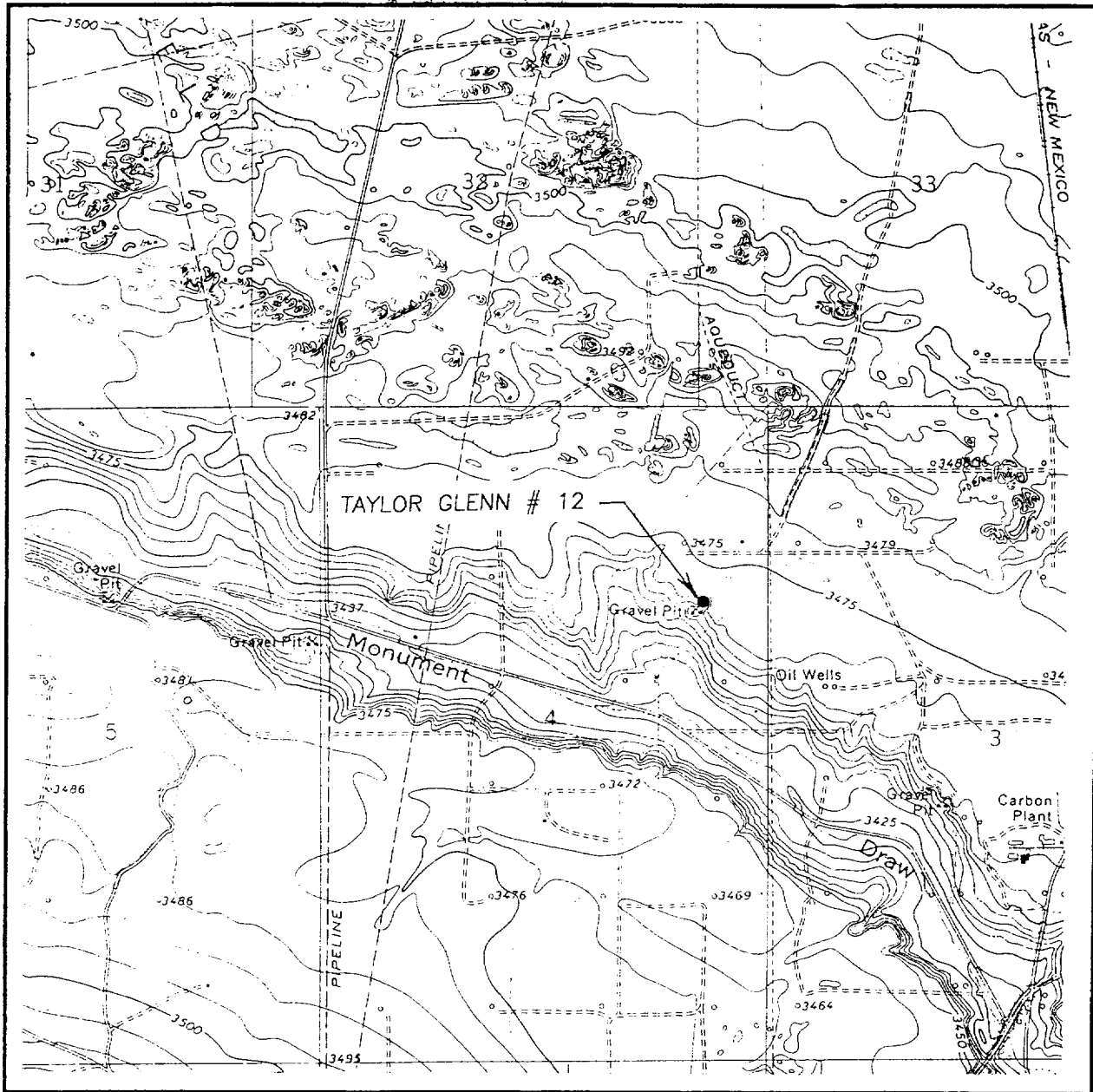
ELEVATION 3463

OPERATOR APACHE CORPORATION

LEASE TAYLOR GLENN

JOHN WEST SURVEYING
HOBBS, NEW MEXICO
(505) 393-3117

LOCATION VERIFICATION MAP



SCALE: 1" = 2000'

CONTOUR INTERVAL: 5'
HOBBS, SW N.M.

SEC. 4 TWP. 21-S RGE. 37-E

SURVEY N.M.P.M.

COUNTY LEA

DESCRIPTION 2310'FNL & 810'FEL

ELEVATION 3463

OPERATOR APACHE CORPORATION

LEASE TAYLOR GLENN

U.S.G.S. TOPOGRAPHIC MAP
HOBBS, SW N.M.

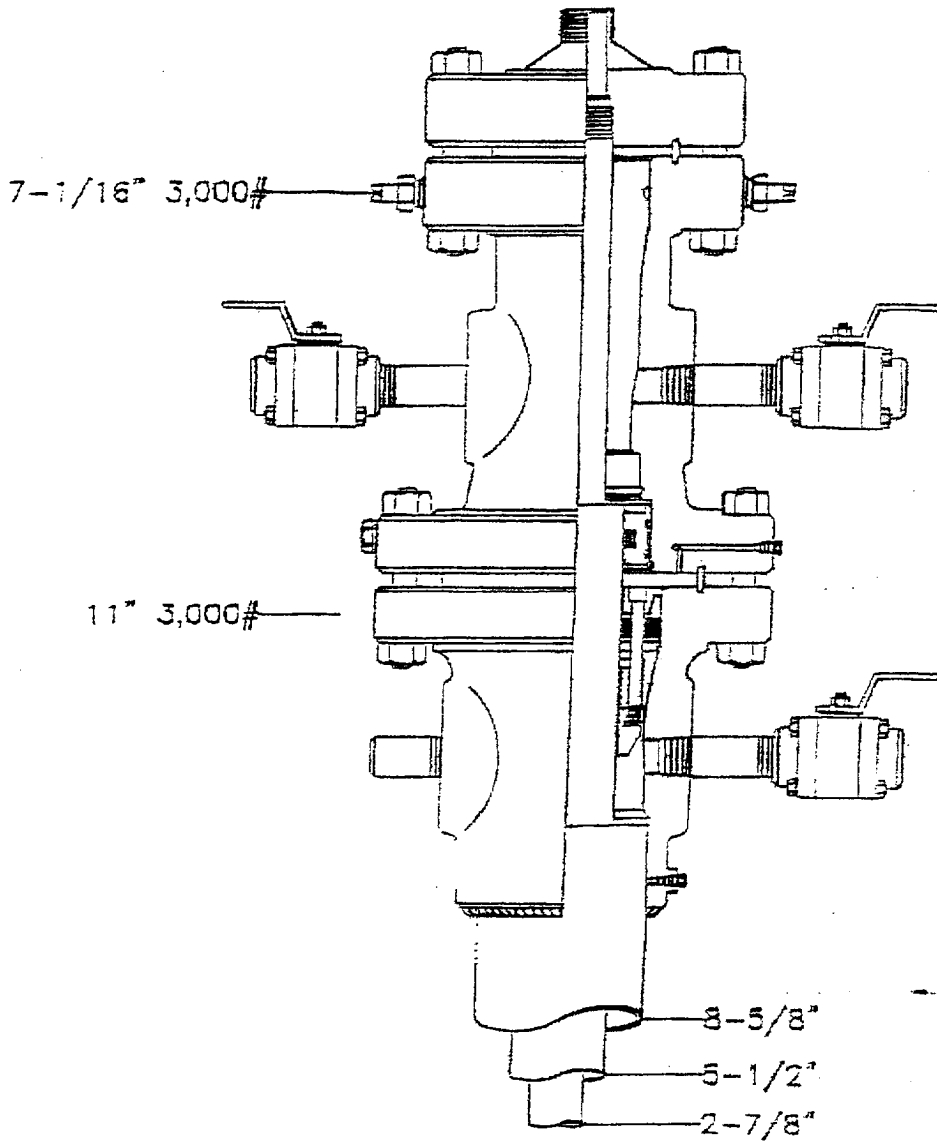
JOHN WEST SURVEYING
HOBBS, NEW MEXICO
(505) 393-3117

Atacene Corporation

Taylor Glenn #12

LEA COUNTY, NEW MEXICO

DATE	APPROVED BY	DATE
10/20/78	CHAS. G. GIBB	4/23/78
DESIGNED BY	REVIEWED BY	DATE



ELF 6/1/71
ABOVE DATE DOES NOT
INDICATE WHEN
CONFIDENTIAL LOGS
WILL BE RELEASED