

District I
P.O. Box 1980, Hobbs, NM 88241-1980
District II
811 South First, Artesia, NM 88210
District III
1000 Rio Brazos Rd., Aztec, NM 87410
District IV
2040 South Pacheco, Santa Fe, NM 87505

State of New Mexico
Energy, Minerals & Natural Resources Department
OIL CONSERVATION DIVISION
2040 South Pacheco
Santa Fe, NM 87505

Form C-101
Revised October 18, 1994
Instructions on back
Submit to Appropriate District Office
State Lease - 6 Copies
Fee Lease - 5 Copies

☐ AMENDED REPORT

APPLICATION FOR PERMIT TO DRILL, RE-ENTER, DEEPEN, PLUGBACK, OR ADD A ZONE

1 Operator Name and Address Apache Corporation attn: Dennis Bickford; 3rd floor 2000 Post Oak Blvd. Ste. 100 Houston, Texas 77056-4400		2 OGRID Number 873
4 Property Code 23118		3 API Number 30-025-35353
5 Property Name Taylor Glenn		6 Well No. 14

7 Surface Location

UL or lot no.	Section	Township	Range	Lot Idn	Feet from the	North/South Line	Feet from the	East/West Line	County
F/6	3	21-S	37-E		2310	North	2100	West	Lea

8 Proposed Bottom Hole Location If Different From Surface

UL or lot no.	Section	Township	Range	Lot Idn	Feet from the	North/South Line	Feet from the	East/West Line	County
9 Proposed Pool 1 Penrose Skelly: Grayburg (50350)					10 Proposed Pool 2				

11 Work Type Code N	12 Well Type Code O	13 Cable/Rotary R	14 Lease Type Code S	15 Ground Level Elevation 3477' KB
16 Multiple	17 Proposed Depth 4450'	18 formation Grayburg	19 Contractor	20 Spud Date ASAP

21 Proposed Casing and Cement Program

Hole Size	Casing Size	Casing weight/foot	Setting Depth	Sacks of Cement	Estimated TOC
12 1/4"	8 5/8"	24#	1100'	450 sxs	Circulate to Surf
7 7/8"	5 1/2"	17#	4450'	700 sxs	Circulate to Surf

22 Describe the proposed program. If this application is to DEEPEN or PLUG BACK give the data on the present productive zone and proposed new productive zone. Describe the blowout prevention program, if any. Use additional sheets if necessary.

Propose to drill 12 1/4" hole to 1100' or 50' into Anhydrite Formation, run & set 1100' of 8 5/8" and cement,
Lead: Class "C" + 2% calcium chloride + 0.25 lb/sx cello flake + 0.005% gps FP-6L + 6% bentonite.
Tail: Class "C" + 2% calcium chloride + 0.005 gps FP-6L.
Drill 7 7/8" hole to 4450', run & set 4450' of 5 1/2" casing and cement.
Lead: 35:65 POZ: Class "C" + 5% sodium chloride + 0.25 lb/sx cello flake + 0.005 gps FP-6L + 8% bentonite.
Tail: 50:50 POZ: Class "H" + 5% sodium + .25 lb/sx cello flake + 1% FL-25 + 0.005 gps FP-6L + bentonite.

Blow Out Prevention: See attached copy

23 I hereby certify that the information given above is true and complete to the best of my knowledge and belief.

Signature: <i>Everett Ouzts</i>		OIL CONSERVATION DIVISION	
Printed Name: Everett Ouzts		Approved by:	
Title: Engineering Technician		Title:	
Date: 01/15/2001	Phone: 915-831-3733	Approval Date:	Expiration Date:
		Conditions on Approval:	

Permit Expires 1 Year
Date Unless Drilling Underway

mp

DISTRICT I
P.O. Box 1980, Hobbs, NM 88241-1980

State of New Mexico
Energy, Minerals and Natural Resources Department

Form C-102
Revised February 10, 1994
Submit to Appropriate District Office
State Lease - 4 Copies
Fee Lease - 3 Copies

DISTRICT II
P.O. Drawer DD, Artesia, NM 88211-0719

DISTRICT III
1000 Rio Brazos Rd., Aztec, NM 87410

DISTRICT IV
P.O. BOX 2088, SANTA FE, N.M. 87504-2088

OIL CONSERVATION DIVISION

P.O. Box 2088
Santa Fe, New Mexico 87504-2088

☐ AMENDED REPORT

WELL LOCATION AND ACREAGE DEDICATION PLAT

API Number 30-025-35353	Pool Code 50350	Pool Name Penrose Skelly;Grayburg
Property Code 23118	Property Name TAYLOR GLENN	Well Number 14
OGRID No. 873	Operator Name APACHE CORPORATION	Elevation 3477

Surface Location

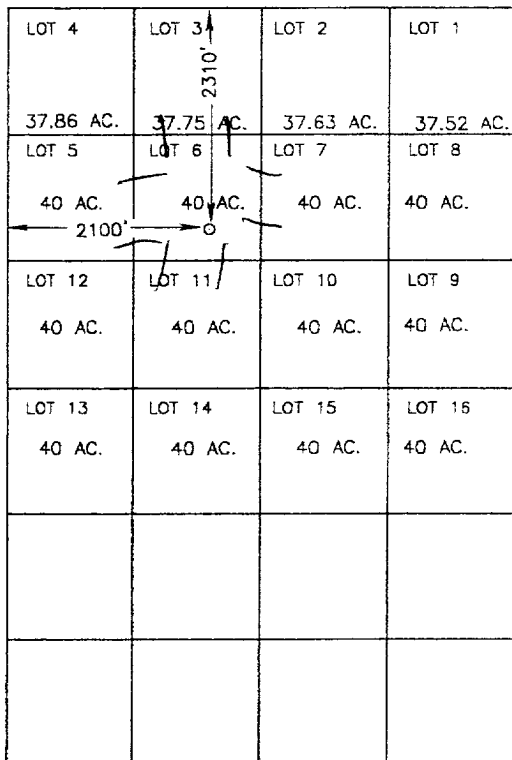
UL or lot No.	Section	Township	Range	Lot Idn	Feet from the	North/South line	Feet from the	East/West line	County
6	3	21S	37E		2310	NORTH	2100	WEST	LEA

Bottom Hole Location If Different From Surface

UL or lot No.	Section	Township	Range	Lot Idn	Feet from the	North/South line	Feet from the	East/West line	County

Dedicated Acres	Joint or Infill	Consolidation Code	Order No.

NO ALLOWABLE WILL BE ASSIGNED TO THIS COMPLETION UNTIL ALL INTERESTS HAVE BEEN CONSOLIDATED
OR A NON-STANDARD UNIT HAS BEEN APPROVED BY THE DIVISION



SPC NME
NAD 1927
N=553371
E=864097

SCALE: 1" = 2000'

OPERATOR CERTIFICATION

I hereby certify the the information
contained herein is true and complete to the
best of my knowledge and belief.

Everett Ouzts
Signature

Everett Ouzts
Printed Name

Eng. Tech
Title

01/15/01
Date

SURVEYOR CERTIFICATION

I hereby certify that the well location shown
on this plat was plotted from field notes of
actual surveys made by me or under my
supervision, and that the same is true and
correct to the best of my belief.

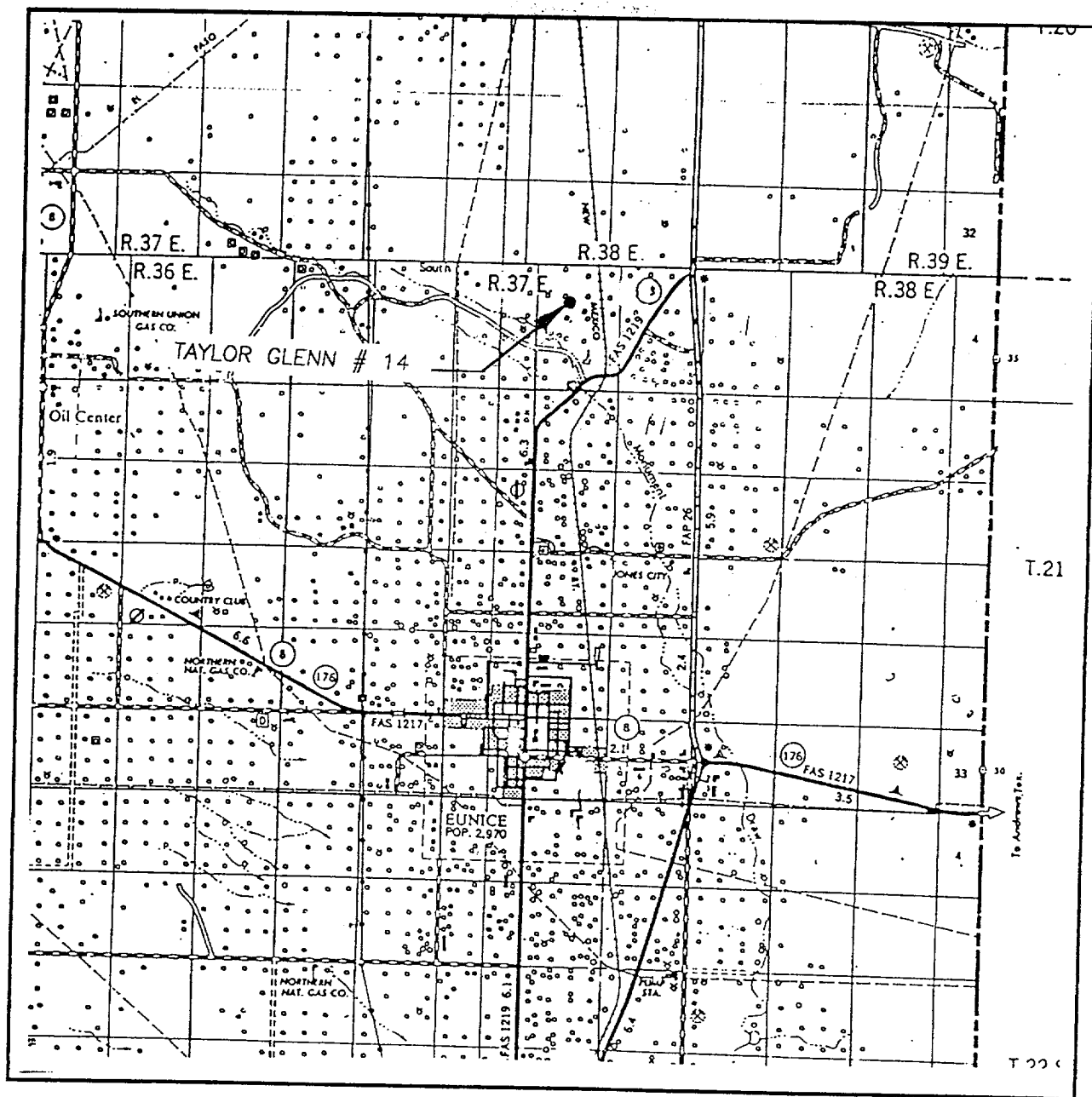
JANUARY 3, 2001

Date Surveyed
Signature & Seal of
Professional Surveyor

Ronald J. Eidson 01/10/01
00-11-1634

Certificate No. RONALD J. EIDSON 3239
GARY EIDSON 12641

VICINITY MAP



SCALE: 1" = 2 MILES

SEC. 3 TWP. 21-S RGE. 37-E

SURVEY N.M.P.M.

COUNTY LEA

DESCRIPTION 2310'FNL & 2100'FWL

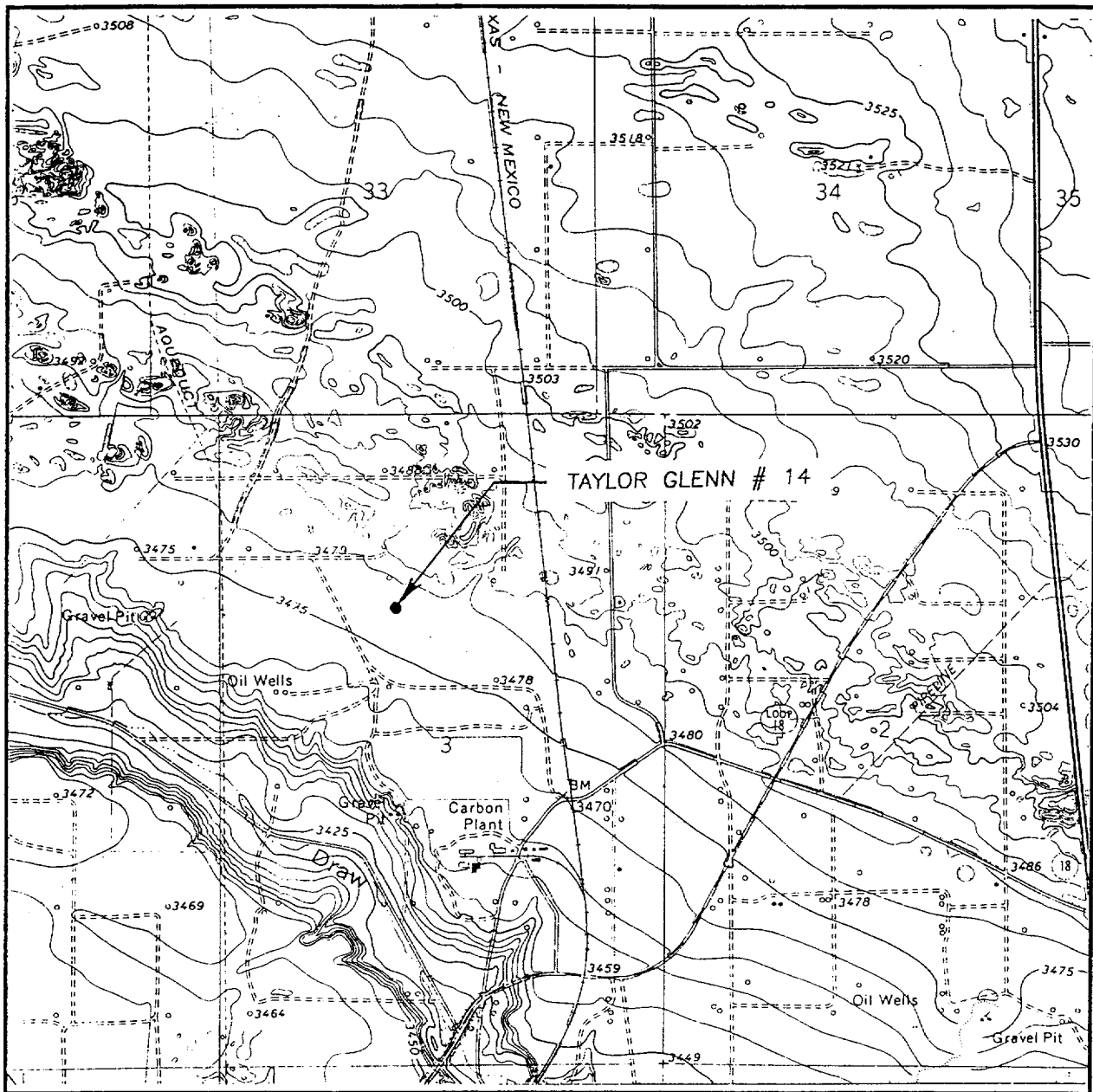
ELEVATION 3477

OPERATOR APACHE CORPORATION

LEASE TAYLOR GLENN

JOHN WEST SURVEYING
HOBBS, NEW MEXICO
(505) 393-3117

LOCATION VERFICATION MAP



SCALE: 1" = 2000'

CONTOUR INTERVAL: 5'
HOBBS, SW N.M.

SEC. 3 TWP. 21-S RGE. 37-E

SURVEY N.M.P.M.

COUNTY LEA

DESCRIPTION 2310'FNL & 2100'FWL

ELEVATION 3477

OPERATOR APACHE CORPORATION

LEASE TAYLOR GLENN

U.S.G.S. TOPOGRAPHIC MAP
HOBBS, SW N.M.

JOHN WEST SURVEYING
HOBBS, NEW MEXICO
(505) 393-3117

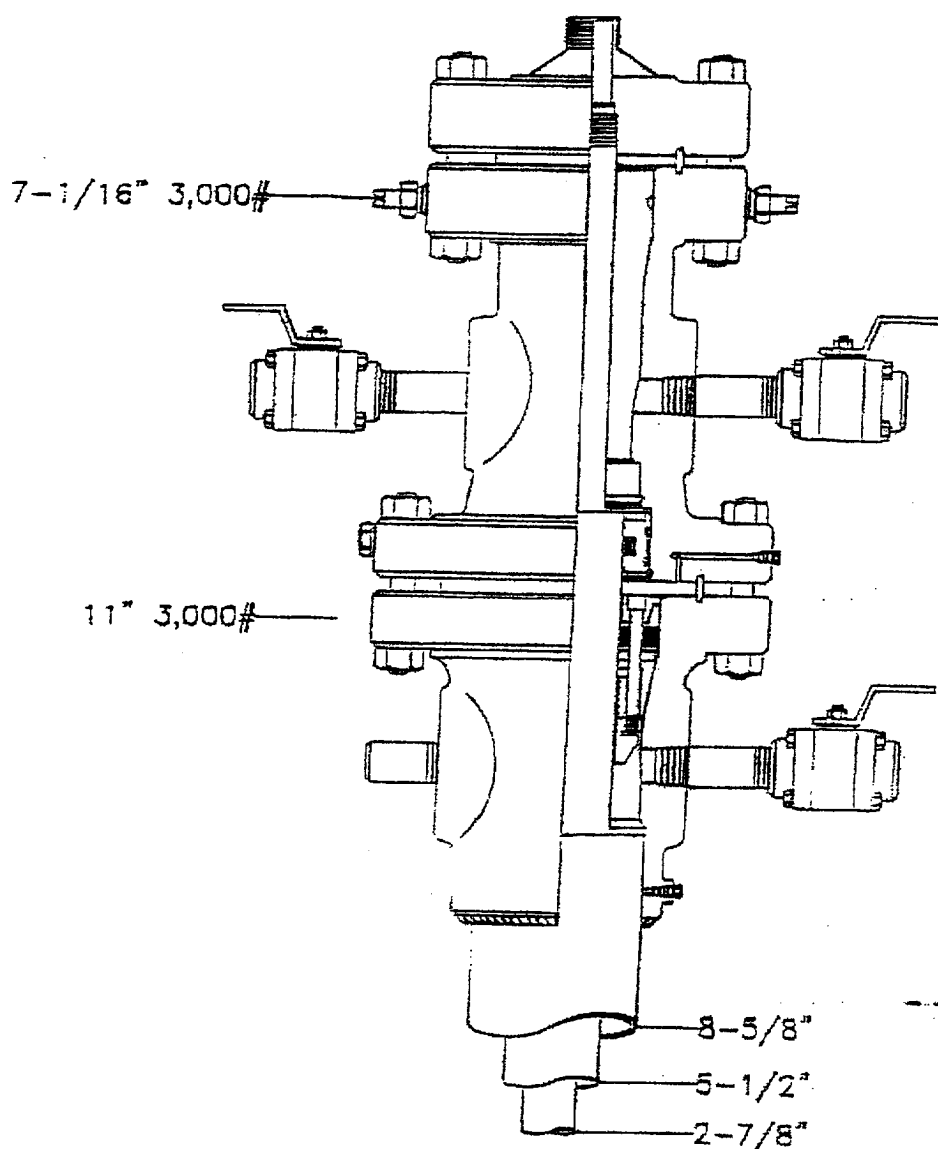
Alpine Corporation

WESTERN REGION

Taylor Glenn #14

LEA COUNTY, NEW MEXICO

DATE	DATE OF CHANGE ORDER	DATE
10/10/1978	10/10/78	4/22/78
REVISION NO.	REVISION NO.	REVISION NO.



ABOVE DATE DOES NOT
INDICATE WHEN
CONFIDENTIAL LOGS
WILL BE RELEASED

ELF

5-16-77