

District I  
P.O. Box 1980, Hobbs, NM 88241-1980  
District II  
811 South First, Artesia, NM 88210  
District III  
1000 Rio Brazos Rd., Aztec, NM 87410  
District IV  
2040 South Pacheco, Santa Fe, NM 87505

State of New Mexico  
Energy, Minerals & Natural Resources Department

OIL CONSERVATION DIVISION  
2040 South Pacheco  
Santa Fe, NM 87505

Form C-101  
Revised October 18, 1994  
Instructions on back  
Submit to Appropriate District Office  
State Lease - 6 Copies  
Fee Lease - 5 Copies

☐ AMENDED REPORT

APPLICATION FOR PERMIT TO DRILL, RE-ENTER, DEEPEN, PLUGBACK, OR ADD A ZONE

1 Operator Name and Address Apache Corporation attn: Dennis Bickford; 3rd floor 2000 Post Oak Blvd. Ste. 100 Houston, Texas 77056-4400		2 OGRID Number 873
4 Property Code 23118		3 API Number 30-025-35354
5 Property Name Taylor Glenn		6 Well No. 15

7 Surface Location

UL or lot no. K/ 11	Section 3	Township 21-S	Range 37-E	Lot Idn	Feet from the 3448	North/South Line North	Feet from the 1576	East/West Line West	County Lea
------------------------	--------------	------------------	---------------	---------	-----------------------	---------------------------	-----------------------	------------------------	---------------

8 Proposed Bottom Hole Location If Different From Surface

UL or lot no.	Section	Township	Range	Lot Idn	Feet from the	North/South Line	Feet from the	East/West Line	County
9 Proposed Pool 1 Penrose Skelly: Grayburg (50350)					10 Proposed Pool 2				

11 Work Type Code N	12 Well Type Code O	13 Cable/Rotary R	14 Lease Type Code S	15 Ground Level Elevation 3469' KB
16 Multiple	17 Proposed Depth 4450'	18 formation Grayburg	19 Contractor	20 Spud Date ASAP

21 Proposed Casing and Cement Program

Hole Size	Casing Size	Casing weight/foot	Setting Depth	Sacks of Cement	Estimated TOC
12 1/4"	8 5/8"	24#	1100'	450 sxs	Circulate to Surf
7 7/8"	5 1/2"	17#	4450'	700 sxs	Circulate to Surf

22 Describe the proposed program. If this application is to DEEPEN or PLUG BACK give the data on the present productive zone and proposed new productive zone. Describe the blowout prevention program, if any. Use additional sheets if necessary.

Propose to drill 12 1/4" hole to 1100' or 50' into Anhydrite Formation, run & set 1100' of 8 5/8" and cement.  
**Lead:** Class "C" + 2% calcium chloride + 0.25 lb/sx cello flake + 0.005% gps FP-6L + 6% bentonite.  
**Tail:** Class "C" + 2% calcium chloride + 0.005 gps FP-6L.  
Drill 7 7/8" hole to 4450', run & set 4450' of 5 1/2" casing and cement.  
**Lead:** 35:65 POZ: Class "C" + 5% sodium chloride + 0.25 lb/sx cello flake + 0.005 gps FP-6L + 8% bentonite.  
**Tail:** 50:50 POZ: Class "H" + 5% sodium + .25 lb/sx cello flake + 1% FL-25 + 0.005 gps FP-6L + bentonite.

Blow Out Prevention: See attached copy

23 I hereby certify that the information given above is true and complete to the best of my knowledge and belief.

Signature: <i>Everett Couzts</i>		OIL CONSERVATION DIVISION	
Printed Name: Everett Couzts		Approved by: <i>CRISTINA...</i>	
Title: Engineering Technician		Title: <i>...</i>	
Date: 01/15/2001	Phone: 915-631-3733	Approval Date: <i>JAN 19 2001</i>	Expiration Date: <i>...</i>
		Comments on Approval:	

Permit Expires 1 Year From Approval  
Date Unless Drilling Underway

*B*  
*MP*

## DISTRICT I

P.O. Box 1980, Hobbs, NM 88241-1980

## DISTRICT II

P.O. Drawer DD, Artesia, NM 88211-0719

## DISTRICT III

1000 Rio Brazos Rd., Aztec, NM 87410

## DISTRICT IV

P.O. BOX 2088, SANTA FE, N.M. 87504-2088

## State of New Mexico

Energy, Minerals and Natural Resources Department

Form C-102

Revised February 10, 1984

Submit to Appropriate District Office

State Lease - 4 Copies

Fee Lease - 3 Copies

## OIL CONSERVATION DIVISION

P.O. Box 2088

Santa Fe, New Mexico 87504-2088

☐ AMENDED REPORT

## WELL LOCATION AND ACREAGE DEDICATION PLAT

API Number 30-025-35354	Pool Code 50350	Pool Name Penrose Skelly;Grayburg
Property Code 23118	Property Name TAYLOR GLENN	Well Number 15
OGRID No. 873	Operator Name APACHE CORPORATION	Elevation 3469

## Surface Location

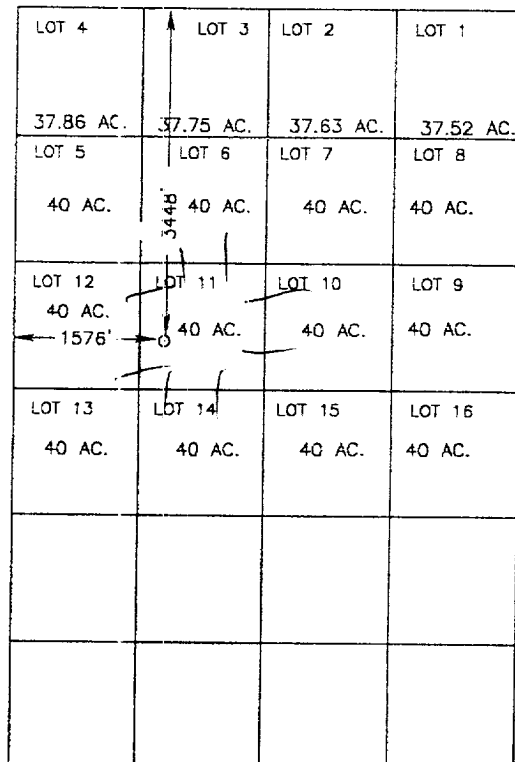
UL or lot No.	Section	Township	Range	Lot Idn	Feet from the	North/South line	Feet from the	East/West line	County
11	3	21S	37E		3448	NORTH	1576	WEST	LEA

## Bottom Hole Location If Different From Surface

UL or lot No.	Section	Township	Range	Lot Idn	Feet from the	North/South line	Feet from the	East/West line	County
Dedicated Acres	Joint or Infill	Consolidation Code	Order No.						

NO ALLOWABLE WILL BE ASSIGNED TO THIS COMPLETION UNTIL ALL INTERESTS HAVE BEEN CONSOLIDATED  
OR A NON-STANDARD UNIT HAS BEEN APPROVED BY THE DIVISION

SPC NME  
NAD 1927  
N=552377  
E=863658



SCALE: 1" = 2000'

## OPERATOR CERTIFICATION

I hereby certify the the information  
contained herein is true and complete to the  
best of my knowledge and belief.

*Everett Ouzts*  
Signature

Everett Ouzts  
Printed Name

Eng. Tech  
Title

01/15/01  
Date

## SURVEYOR CERTIFICATION

I hereby certify that the well location shown  
on this plat was plotted from field notes of  
actual surveys made by me or under my  
supervision, and that the same is true and  
correct to the best of my belief.

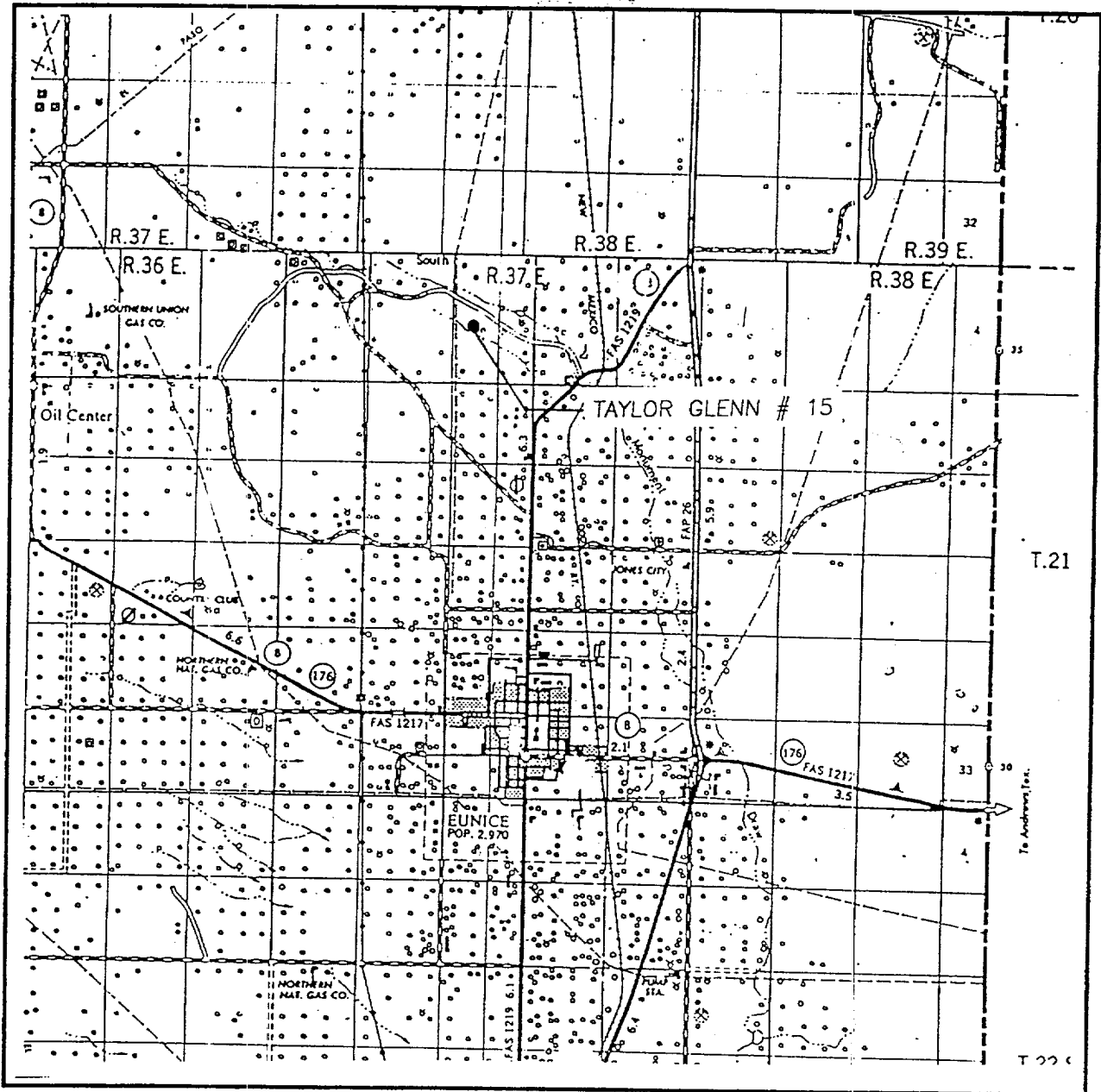
JANUARY 3, 2001

Date Surveyed: AWB  
Signature & Seal of  
Professional Surveyor

*Ronald J. Edson* 01/10/01  
00-11-1635

Certificate No. RONALD J. EDSON 3239  
GARY EDSON 12841

# VICINITY MAP



SCALE: 1" = 2 MILES

SEC. 3 TWP. 21-S RGE. 37-E

SURVEY N.M.P.M.

COUNTY LEA

DESCRIPTION 3448'FNL & 1576'FWL

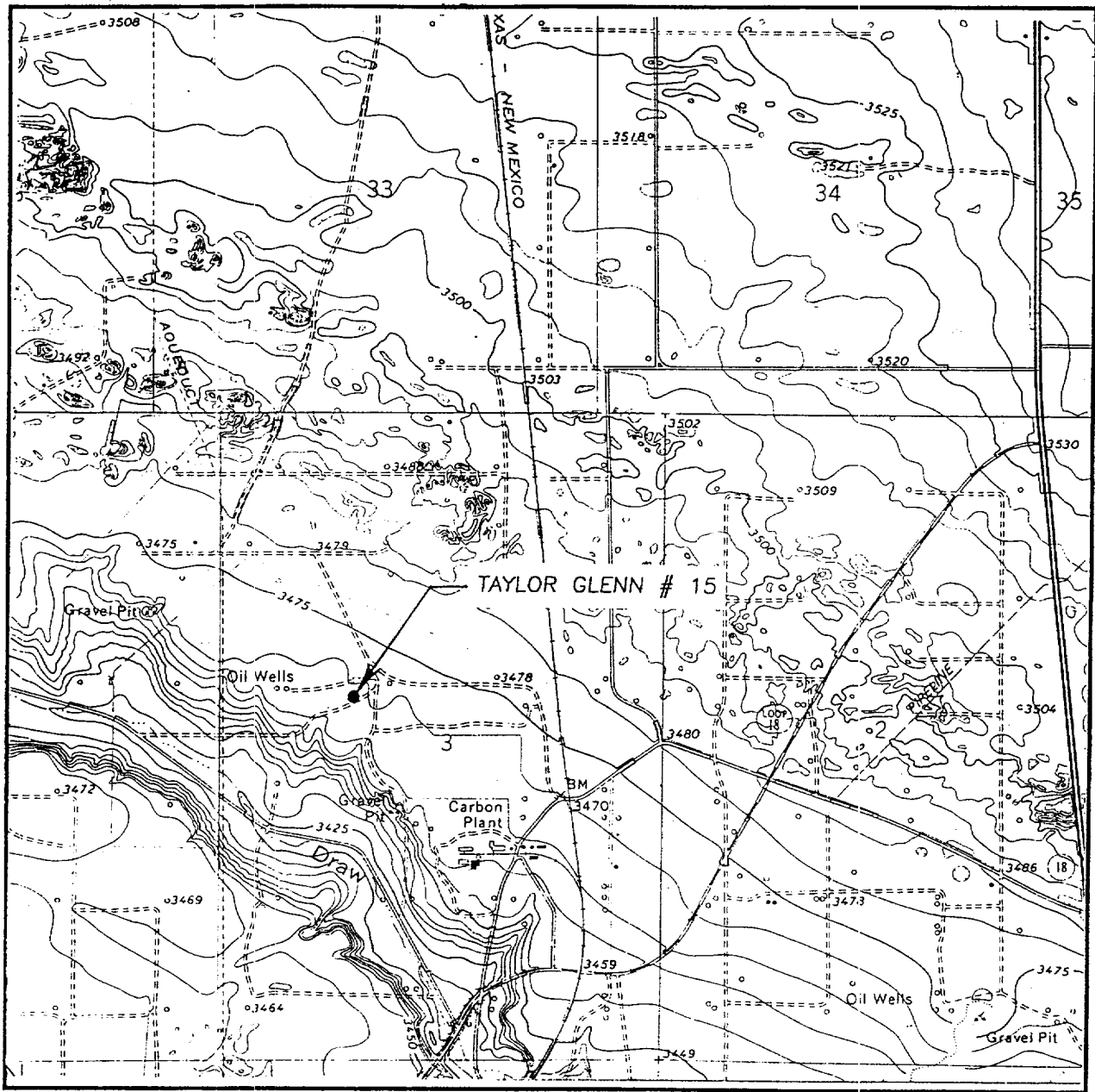
ELEVATION 3469

OPERATOR APACHE CORPORATION

LEASE TAYLOR GLENN

JOHN WEST SURVEYING  
HOBBS, NEW MEXICO  
(505) 393-3117

# LOCATION VERIFICATION MAP



SCALE: 1" = 2000'

CONTOUR INTERVAL: 5'  
HOBBS, SW N.M.

SEC. 3 TWP. 21-S RGE. 37-E

SURVEY N.M.P.M.

COUNTY LEA

DESCRIPTION 3448'FNL & 1576'FWL

ELEVATION 3469

OPERATOR APACHE CORPORATION

LEASE TAYLOR GLENN

U.S.G.S. TOPOGRAPHIC MAP  
HOBBS, SW N.M.

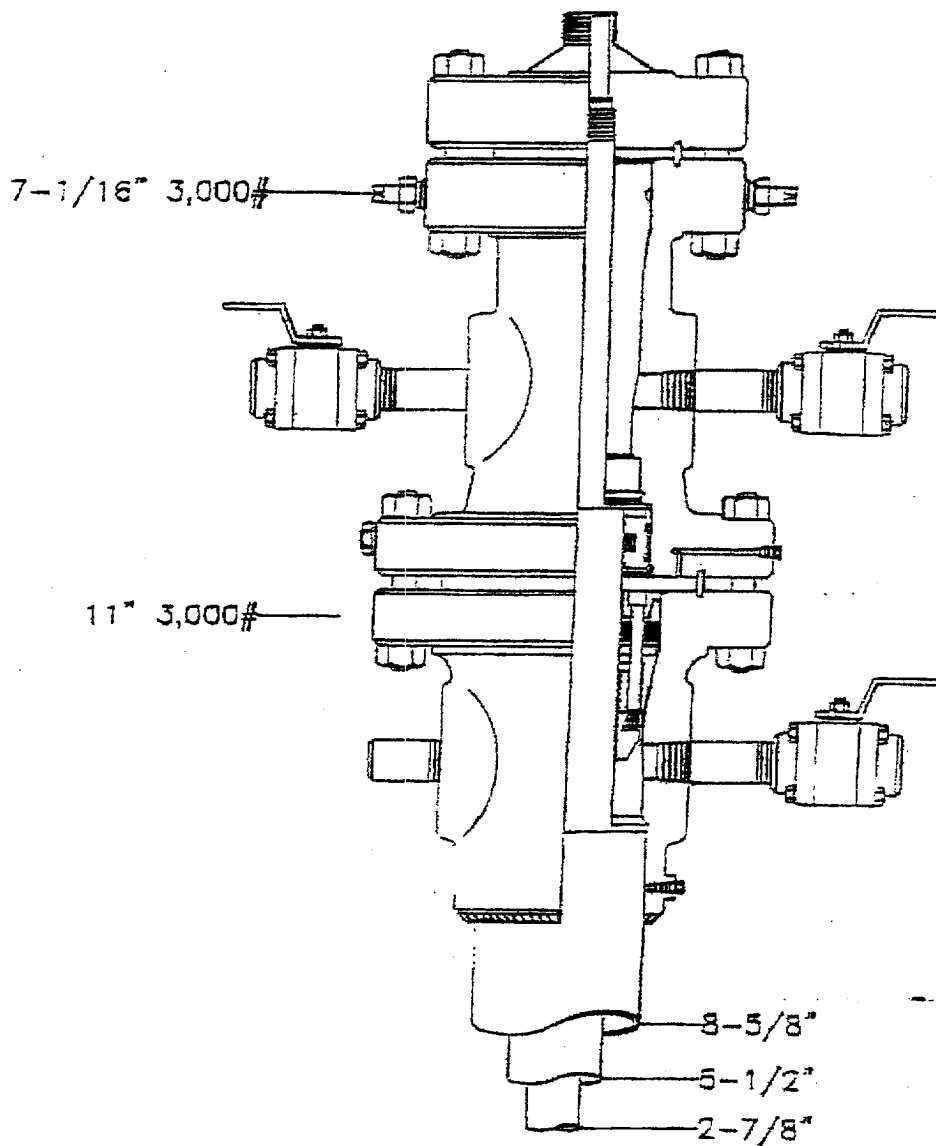
JOHN WEST SURVEYING  
HOBBS, NEW MEXICO  
(505) 393-3117

# Alacene Corporation

Taylor Glenn #15

LEA COUNTY, NEW MEXICO

DATE	APPROVED BY	COMPANY	DATE
10/20/1970	W. J. JONES	ALACENE CORP.	4/22/70



ELF  
1/26/01  
ABOVE DATE DOES NOT  
INDICATE WHEN  
CONFIDENTIAL LOGS  
WILL BE RELEASED