

District I
PO Box 1980, Hobbs, NM 88241-1980
District II
811 South First, Artesia, NM 88210
District III
1000 Rio Brazos Rd., Aztec, NM 87410
District IV
2040 South Pacheco, Santa Fe, NM 87505

State of New Mexico
Energy, Minerals & Natural Resources Department

OIL CONSERVATION DIVISION

2040 South Pacheco
Santa Fe, NM 87505

Form C-101
Revised October 18, 1994
Instructions on back
Submit to Appropriate District Office
State Lease - 6 Copies
Fee Lease - 5 Copies

☐ AMENDED REPORT

APPLICATION FOR PERMIT TO DRILL, RE-ENTER, DEEPEN, PLUGBACK, OR ADD A ZONE

¹ Operator Name and Address. Zia Energy, Inc. PO Box 2510 Hobbs, NM 88241		² OGRID Number 025616
		³ API Number 30 - 025-35373
⁴ Property Code 27170	⁵ Property Name Texaco	⁶ Well No. 1

⁷ Surface Location

UL or lot no.	Section	Township	Range	Lot Idn	Feet from the	North/South line	Feet from the	East/West line	County
L	3	21S	37E		1730	South	660	West	Lea

⁸ Proposed Bottom Hole Location If Different From Surface

UL or lot no.	Section	Township	Range	Lot Idn	Feet from the	North/South line	Feet from the	East/West line	County

⁹ Proposed Pool 1

Hare San Andres East

¹⁰ Proposed Pool 2

Pernose Skelly Grayburg

¹¹ Work Type Code N	¹² Well Type Code O	¹³ Cable/Rotary R	¹⁴ Lease Type Code P	¹⁵ Ground Level Elevation
¹⁶ Multiple	¹⁷ Proposed Depth 4500	¹⁸ Formation San Andres	¹⁹ Contractor	²⁰ Spud Date

²¹ Proposed Casing and Cement Program

Hole Size	Casing Size	Casing weight/foot	Setting Depth	Sacks of Cement	Estimated TOC
12 1/4"	8 5/8"	24#	1200	650	Surface
7 7/8"	5 1/2"	15.5#	4500	1000	Surface

²² Describe the proposed program. If this application is to DEEPEN or PLUG BACK give the data on the present productive zone and proposed new productive zone. Describe the blowout prevention program, if any. Use additional sheets if necessary.

1. Prepare location - dig & line pits for drilling.
2. Move in & rig up Drlg Rig. Install BOP.
3. Drill 12 1/4" hole and set 8 5/8" casing at 1200'. Cement to Surface.
4. Drill 7 7/8" hole to 4500', log and set 5 1/2" casing. Cement to surface.
5. Perforate based on porosity logs. Stimulate with acid and if necessary fracture treat.
6. Place on production and test.

²³ I hereby certify that the information given above is true and complete to the best of my knowledge and belief.

Signature: *Scott Nelson*

Printed name:
Scott Nelson

Title:
Engineer

Date: 1/22/01

Phone: 505-393-2937

OIL CONSERVATION DIVISION

Approved by:

ORIGINAL SIGNATURE
DISTRICT SUPERVISOR

Title:

JAN 26 2001

Approval Date:

Expiration Date:

Conditions of Approval: Attached ☐

Permit Expires 1 Year From Approval
Date Unless Drilling Underway

MP

DISTRICT I
P.O. Box 1000, Hobbs, NM 88241-1000

DISTRICT II
P.O. Boxer 20, Artesia, NM 88211-0710

DISTRICT III
1000 Elie Brasen Rd., Axtoc, NM 87410

DISTRICT IV
P.O. Box 2088, Santa Fe, N.M. 87504-2088

State of New Mexico
Energy, Minerals and Natural Resources Department

OIL CONSERVATION DIVISION
P.O. Box 2088
Santa Fe, New Mexico 87504-2088

Form C-102
Revised February 10, 1994
Submit to Appropriate District Office
State Lease - 4 Copies
Fee Lease - 3 Copies

WELL LOCATION AND ACREAGE DEDICATION PLAT

☐ AMENDED REPORT

API Number 30-025-35373		Pool Code 96601	Pool Name Hare; San Andres East
Property Code 27170	Property Name TEXACO		Well Number 1
OCRID No. 25616	Operator Name ZIA ENERGY		Elevation 3466

Surface Location

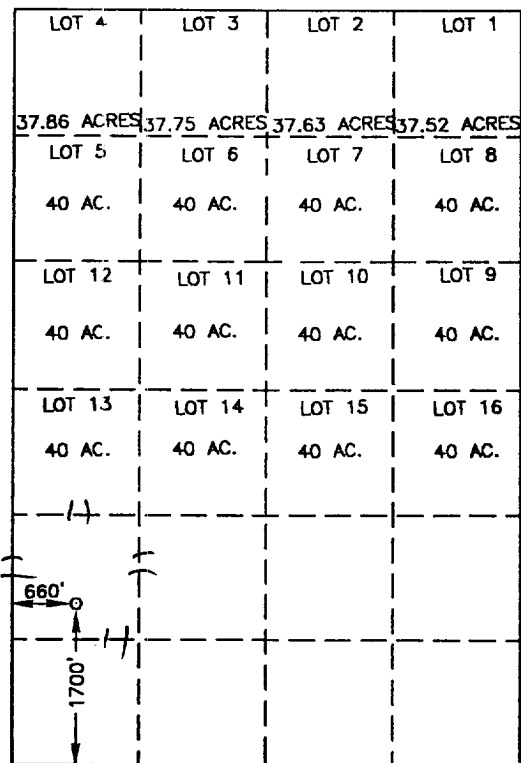
UL or lot No.	Section	Township	Range	Lot Idn	Feet from the	North/South line	Feet from the	East/West line	County
L	3	21S	37E		1700	SOUTH	660	WEST	LEA

Bottom Hole Location If Different From Surface

UL or lot No.	Section	Township	Range	Lot Idn	Feet from the	North/South line	Feet from the	East/West line	County

Dedicated Acres 40	Joint or Infill	Consolidation Code	Order No.
-----------------------	-----------------	--------------------	-----------

NO ALLOWABLE WILL BE ASSIGNED TO THIS COMPLETION UNTIL ALL INTERESTS HAVE BEEN CONSOLIDATED
OR A NON-STANDARD UNIT HAS BEEN APPROVED BY THE DIVISION



SCALE: 1" = 2000'

OPERATOR CERTIFICATION

I hereby certify the the information
contained herein is true and complete to the
best of my knowledge and belief.

Signature
Scott Nelson
Printed Name
Engr.
Title
Date 1/24/01

SURVEYOR CERTIFICATION

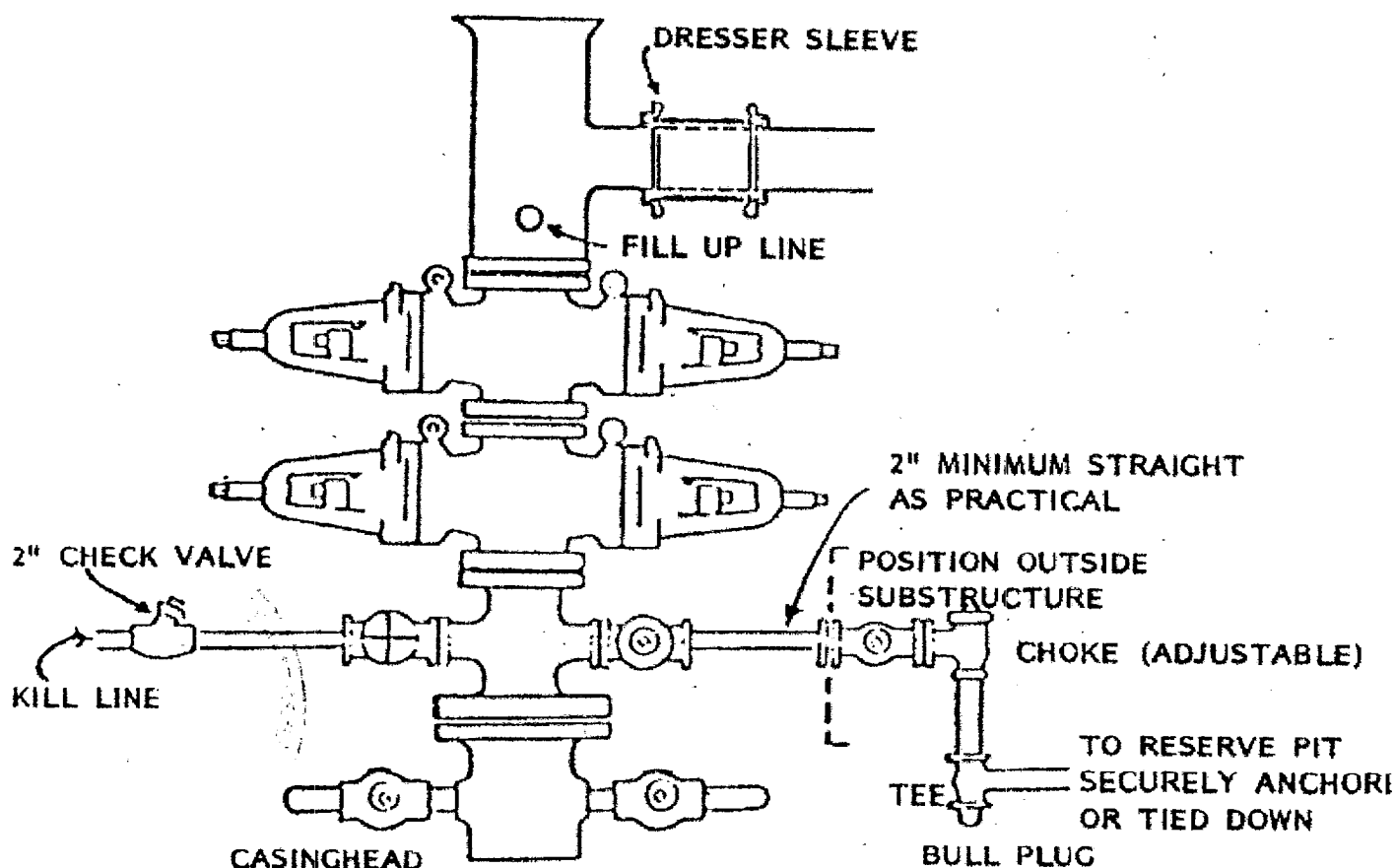
I hereby certify that the well location shown
on this plat was plotted from field notes of
actual surveys made by me or under my
supervision, and that the same is true and
correct to the best of my belief.

JANUARY 11, 2001

Date Surveyed
Signature & Seal of
Professional Surveyor
Professional Surveyor
Date 1/18/01
Certificate No. 3239
12641

1. All equipment must be in good condition, 2,000 psi WP (4,000 psi test) minimum.
 2. Bell nipple above blowout preventer shall be same size as casing being drilled through.
 3. Kelly cock to be installed on kelly.
 4. Pull opening safety valve 2,000 psi W.P. (4,000 psi test) minimum must be available on rig floor at all times with proper connection or subs to fit any tool joint in string.
 5. Spool or cross may be eliminated if connections are available in the lower part of the blowout preventer body.
 6. Double or space saver type preventers may be used in lieu of two single preventers.
 7. BOP rams to be installed as follows:

Top preventer	-	Drill pipe or casing rams
Bottom preventer	-	Blind rams
- *Zia superintendent may reverse location of rams.
8. Extensions and hand wheels to be installed and braced at all times.
 9. Manifold valves may be gate or plug metal to metal seal 2" minimum.



ELF 4/27/01
ABOVE DATE DOES NOT
INDICATE WHEN
CONFIDENTIAL LOGS
WILL BE RELEASED