

District I
P.O. Box 1980, Hobbs, NM 88241-1980
District II
811 South First, Artesia, NM 88210
District III
1000 Rio Brazos Rd., Aztec, NM 87410
District IV
2040 South Pacheco, Santa Fe, NM 87505

State of New Mexico
Energy, Minerals & Natural Resources Department
OIL CONSERVATION DIVISION
2040 South Pacheco
Santa Fe, NM 87505

Form C-101
Revised October 18, 1994
Instructions on back
Submit to Appropriate District Office
State Lease - 6 Copies
Fee Lease - 5 Copies

☐ AMENDED REPORT

APPLICATION FOR PERMIT TO DRILL, RE-ENTER, DEEPEN, PLUGBACK, OR ADD A ZONE

1 Operator Name and Address Apache Corporation Attn: Dennis Bickford 2000 Post Oak Blvd. Ste. 100 Houston, Texas 77056-4400		2 OGRID Number 873
		3 API Number 30-025-35405
4 Property Code 22503	5 Property Name Northeast Drinkard Unit	6 Well No. 334

7 Surface Location									
UL or lot no.	Section	Township	Range	Lot Idn	Feet from the	North/South Line	Feet from the	East/West Line	County
W	2	21-S	37-E		1300	South	2450	East	Lea

8 Proposed Bottom Hole Location If Different From Surface									
UL or lot no.	Section	Township	Range	Lot Idn	Feet from the	North/South Line	Feet from the	East/West Line	County
9 Proposed Pool 1 Eunice; Bli-Tu-Dr, North (22900)					10 Proposed Pool 2				

11 Work Type Code N	12 Well Type Code O	13 Cable/Rotary R	14 Lease Type Code P	15 Ground Level Elevation 3473' KB
16 Multiple	17 Proposed Depth 6950	18 formation Bliinebry/Tubb/Drinkard		19 Contractor ASAP

21 Proposed Casing and Cement Program					
Hole Size	Casing Size	Casing weight/foot	Setting Depth	Sacks of Cement	Estimated TOC
12 1/4"	8 5/8"	24# J55 STC	1300' or Anhydrite Form.	585 sxs	Circulate to Surf
7 7/8"	5 1/2"	17# J55 LTC	6950	477 sxs Class "C"	Circulate to Surf
				+360 sxs 50/50 Pozmix	

22 Describe the proposed program. If this application is to DEEPEN or PLUG BACK give the data on the present productive zone and proposed new productive zone. Describe the blowout prevention program, if any. Use additional sheets if necessary.

Propose to drill 12 1/4" hole to 1300' or 50' into Anhydrite, run & set 1300' of 8 5/8" and cement, circulate to surface
Lead: 400 sxs Class "C" +2%bwow Cal. Chloride + additives
Tail: 185 Class "C" +2%bwow Cal. Chloride + additives
Drill 7 7/8" hole to 6950', run & set 6950' of 5 1/2" and cement, (caliper + 20%) circulate to surface.
Lead: 477 sxs(36:65)Poz (Fly Ash) Class "C" +2%bwow Cal. Chloride + additives
Tail: 360 sxs(50:50)Poz (Fly Ash) Class "H" +2%bwow Sod. Chloride + additives
Blow Out Prevention: See attached copy

23 I hereby certify that the information given above is true and complete to the best of my knowledge and belief.		OIL CONSERVATION DIVISION	
Signature: <i>Everett Ouzts</i>		Approved by: <i>[Signature]</i>	
Printed Name: Everett Ouzts		Title: <i>[Signature]</i>	
Title: Engineering Technician		Approval Date: <i>[Signature]</i>	
02/01/2001		Expiration Date: <i>[Signature]</i>	
Phone: 915-631-3733		Conditions on Approval:	

Permit Expires 1 Year From Approval Date Unless Drilling Underway

[Handwritten initials]

DISTRICT I
P.O. Box 1980, Hobbs, NM 88241-1980

DISTRICT II
P.O. Drawer DD, Artesia, NM 88211-0719

DISTRICT III
1000 Rio Brazos Rd., Aztec, NM 87410

DISTRICT IV
P.O. BOX 2088, SANTA FE, N.M. 87504-2088

State of New Mexico
Energy, Minerals and Natural Resources Department

OIL CONSERVATION DIVISION
P.O. Box 2088
Santa Fe, New Mexico 87504-2088

Form C-102
Revised February 10, 1994
Submit to Appropriate District Office
State Lease - 4 Copies
Fee Lease - 3 Copies

WELL LOCATION AND ACREAGE DEDICATION PLAT

☐ AMENDED REPORT

API Number 30-025-35405	Pool Code 22900	Pool Name Eunice;Bli-Tu-Dr, North
Property Code 22503	Property Name N.E.D.U.	Well Number 334
OGRID No. 873	Operator Name APACHE CORPORATION	Elevation 3473'

Surface Location

UL or lot No.	Section	Township	Range	Lot Idn	Feet from the	North/South line	Feet from the	East/West line	County
W	2	21S	37E		1300	SOUTH	2450	EAST	LEA

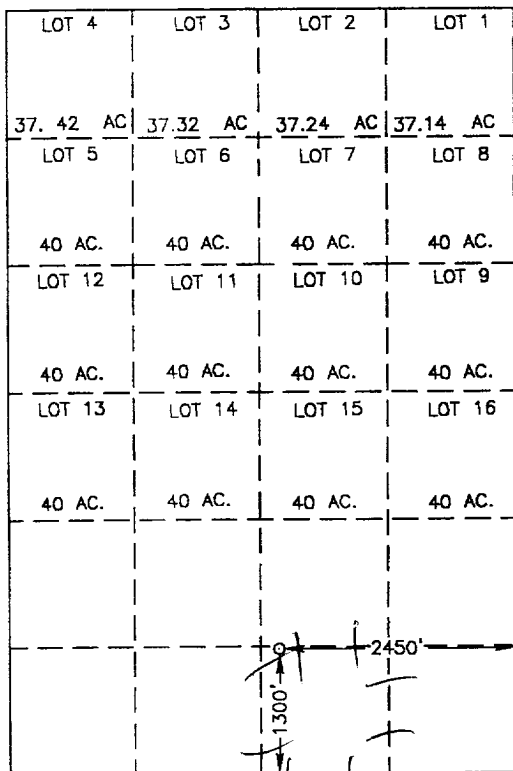
Bottom Hole Location If Different From Surface

UL or lot No.	Section	Township	Range	Lot Idn	Feet from the	North/South line	Feet from the	East/West line	County

Dedicated Acres 40	Joint or Infill	Consolidation Code	Order No.
-----------------------	-----------------	--------------------	-----------

NO ALLOWABLE WILL BE ASSIGNED TO THIS COMPLETION UNTIL ALL INTERESTS HAVE BEEN CONSOLIDATED
OR A NON-STANDARD UNIT HAS BEEN APPROVED BY THE DIVISION

SPC NME
NAD 1927
N=549218
E=870047



SCALE: 1" = 2000'

OPERATOR CERTIFICATION

I hereby certify the the information
contained herein is true and complete to the
best of my knowledge and belief.

Everett Ouzts
Signature
Everett Ouzts
Printed Name
Eng. Tech.
Title
02-01-2001
Date

SURVEYOR CERTIFICATION

I hereby certify that the well location shown
on this plat was plotted from field notes of
actual surveys made by me or under my
supervision, and that the same is true and
correct to the best of my belief.

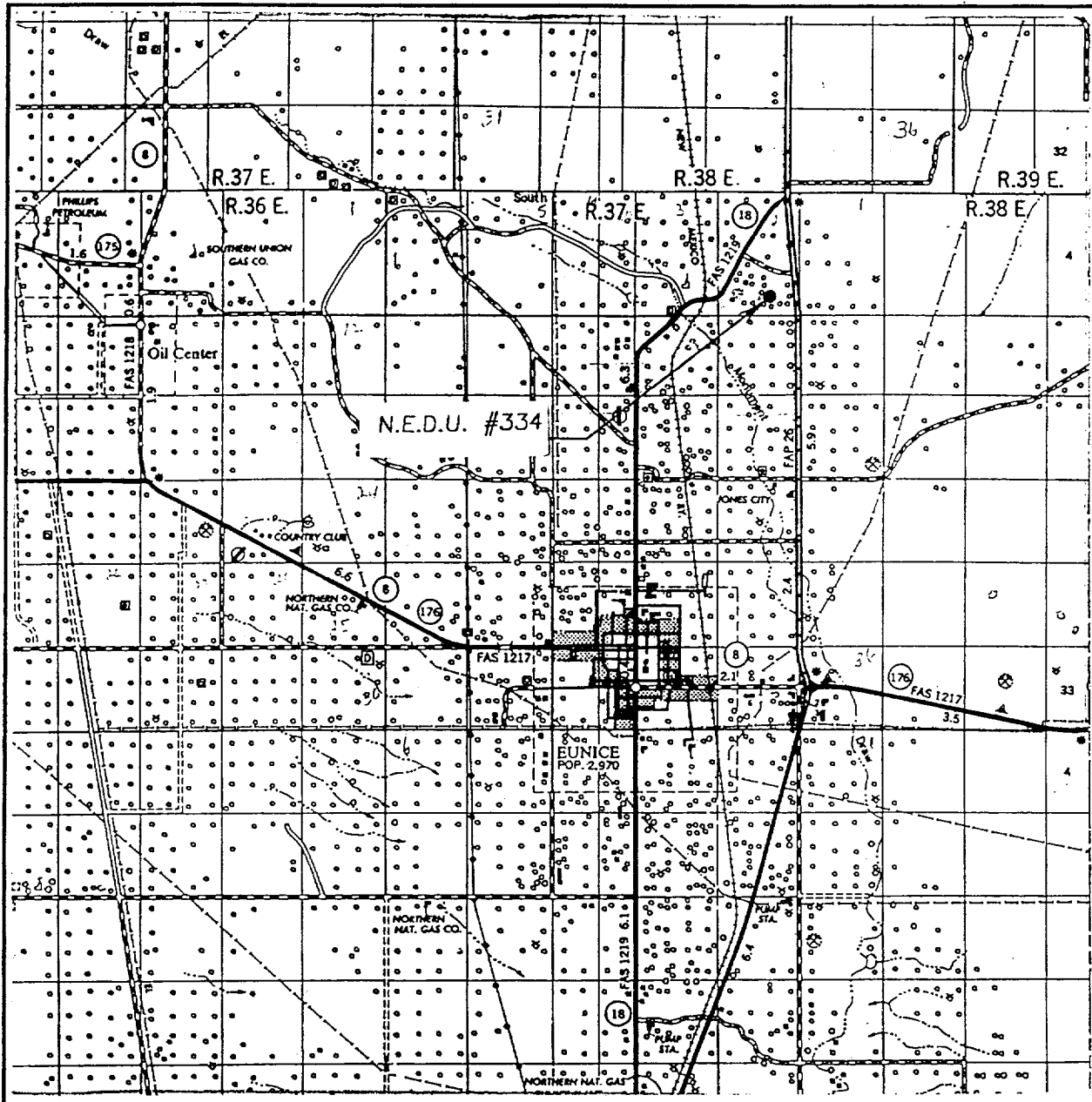
JANUARY 18, 2001

Date Surveyed
Signature & Seal of
Professional Surveyor

Ronald J. Eidson 01/25/01
00-11-1404

Certificate No. RONALD J. EIDSON 3239
GARY EIDSON 12641

VICINITY MAP



SCALE: 1" = 2 MILES

SEC. 2 TWP. 21-S RGE. 37-E

SURVEY N.M.P.M.

COUNTY LEA

DESCRIPTION 1300'FSL & 2450'FEL

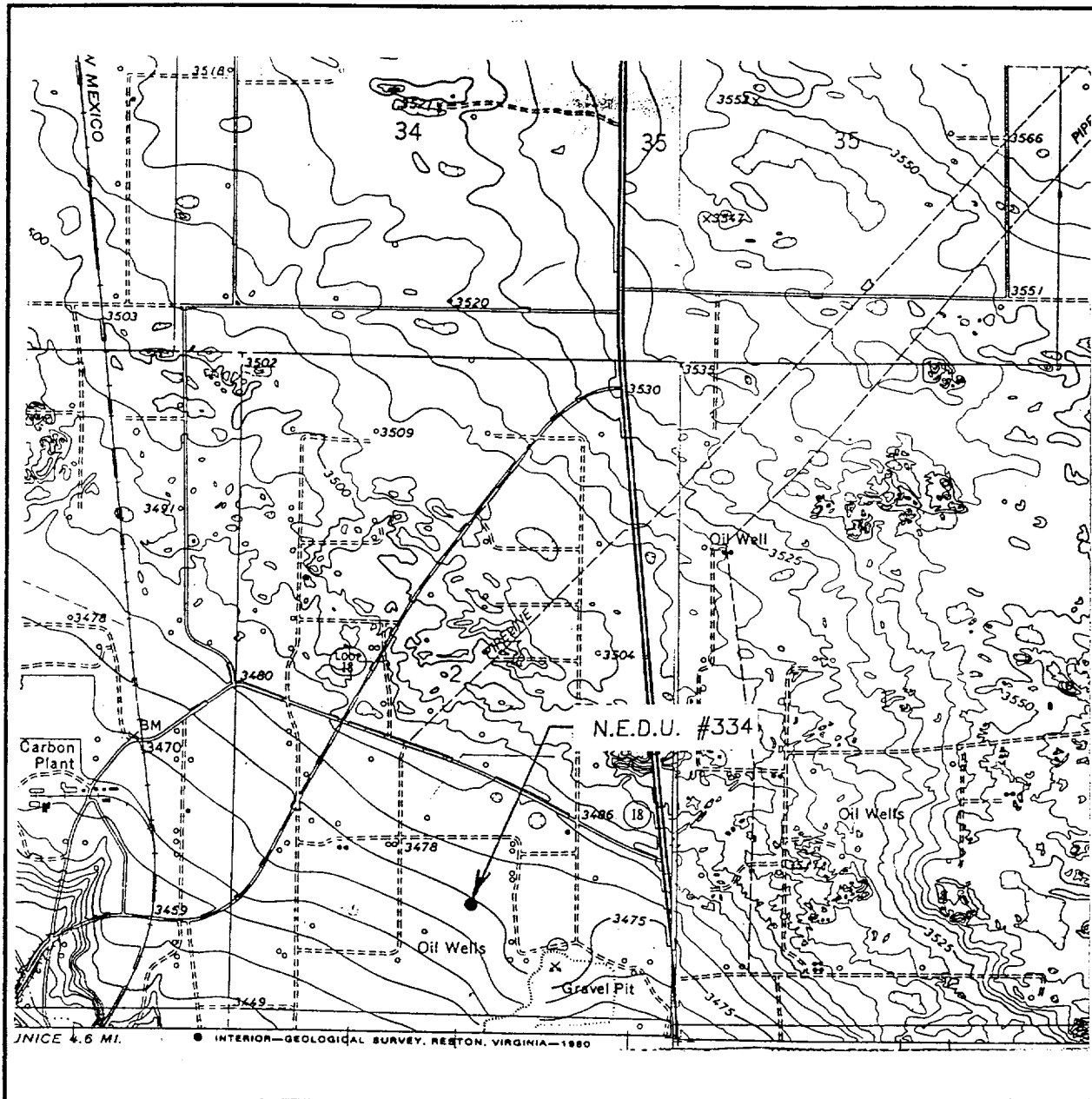
ELEVATION 3473'

OPERATOR APACHE CORPORATION

LEASE N.E.D.U.

JOHN WEST SURVEYING
HOBBS, NEW MEXICO
(505) 393-3117

LOCATION VERIFICATION MAP



SCALE: 1" = 2000'

CONTOUR INTERVAL: 5'
HOBBS SW, N.M.

SEC. 2 TWP. 21-S RGE. 37-E

SURVEY N.M.P.M.

COUNTY LEA

DESCRIPTION 1300'FSL & 2450'FEL

ELEVATION 3473'

OPERATOR APACHE CORPORATION

LEASE N.E.D.U.

U.S.G.S. TOPOGRAPHIC MAP
HOBBS SW, N.M.

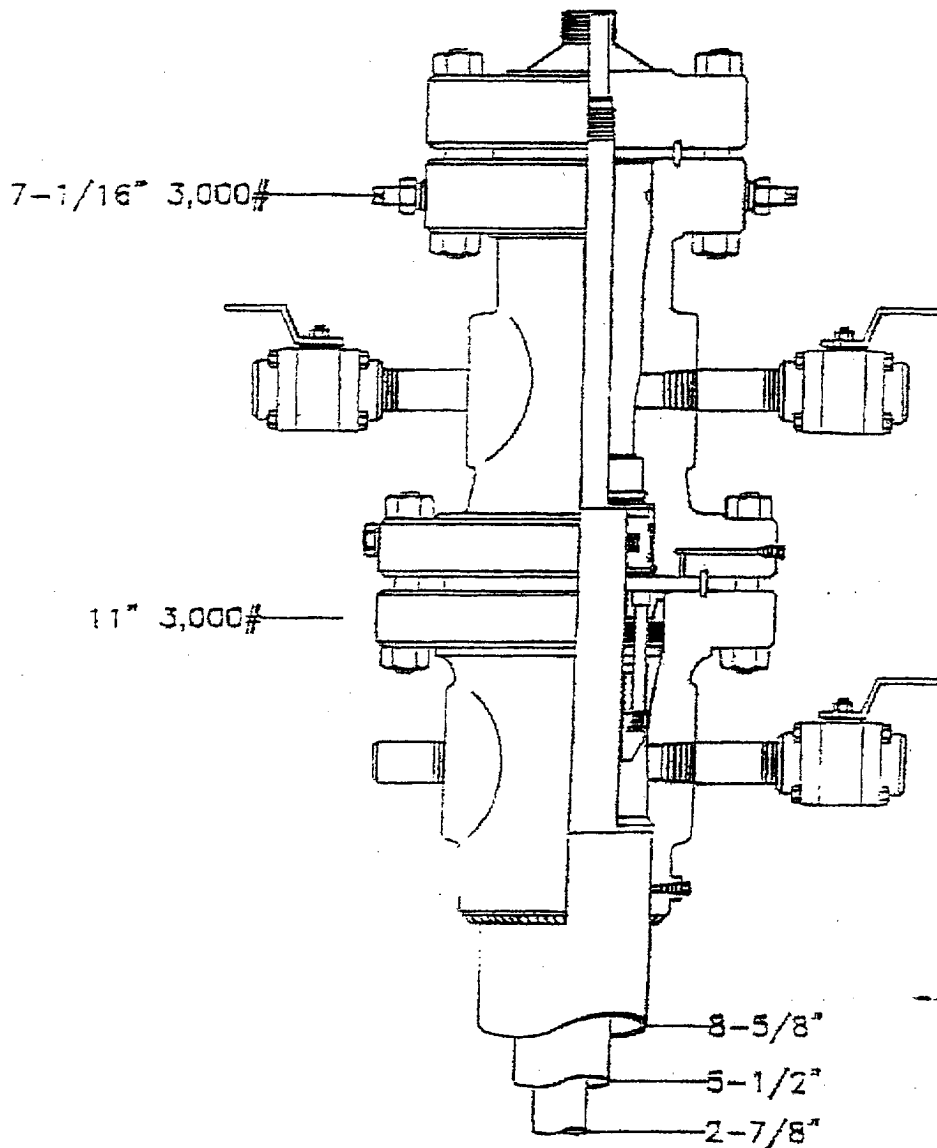
JOHN WEST SURVEYING
HOBBS, NEW MEXICO
(505) 393-3117

Alacene Corporation

Northeast Drinkard Unit

LEA COUNTY, NEW MEXICO

DATE	APPROVED BY	DATE	4/22/66
DESIGNED BY	DESIGNED BY	LAST APPROVED	



ELF

4/18/01
ABOVE DATE DOES NOT
INDICATE WHEN
CONFIDENTIAL LOGS
WILL BE RELEASED