

DISTRICT I
P.O. Box 1980, Hobbs, NM 88241-1980

State of New Mexico

Energy, Minerals and Natural Resources Department

Form C-102
Revised February 10, 1994
Submit to Appropriate District Office
State Lease - 4 Copies
Fee Lease - 3 Copies

DISTRICT II
P.O. Drawer DD, Artesia, NM 88211-0719

OIL CONSERVATION DIVISION

P.O. Box 2088

Santa Fe, New Mexico 87504-2088

DISTRICT III
1000 Rio Brazos Rd., Artec, NM 87410

DISTRICT IV
P.O. BOX 2088, SANTA FE, N.M. 87504-2088

WELL LOCATION AND ACREAGE DEDICATION PLAT

☐ AMENDED REPORT

API Number 30-025-35453	Pool Code 23000	Pool Name EUNICE MONUMENT; GRAYBURG-SAN ANDRES
Property Code 2616	Property Name E.M.S.U.	Well Number 614
OGRID No. 4323	Operator Name CHEVRON U.S.A. PRODUCTION COMPANY	Elevation 3585'

Surface Location

UL or lot No.	Section	Township	Range	Lot Idn	Feet from the	North/South line	Feet from the	East/West line	County
LOT 9	6	21-S	36-E		3655	NORTH	85	EAST	LEA

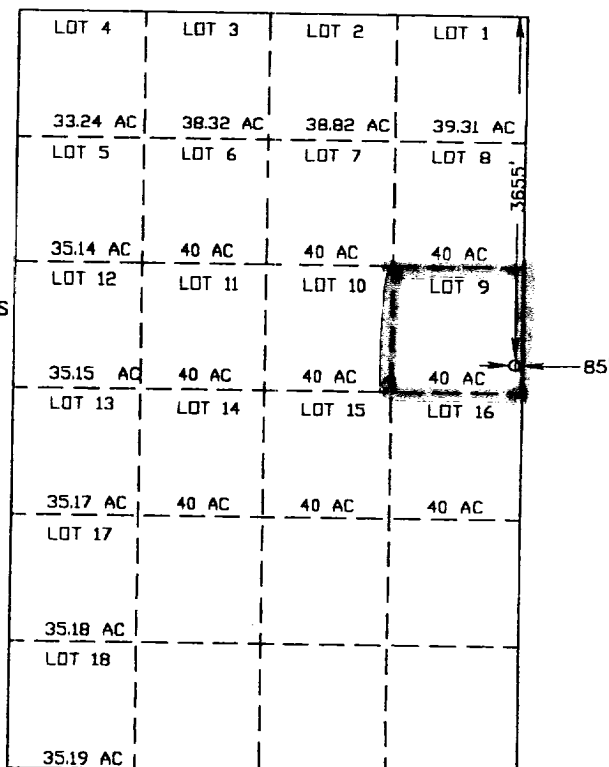
Bottom Hole Location If Different From Surface

UL or lot No.	Section	Township	Range	Lot Idn	Feet from the	North/South line	Feet from the	East/West line	County
Dedicated Acres 40	Joint or Infill	Consolidation Code	Order No.						

NO ALLOWABLE WILL BE ASSIGNED TO THIS COMPLETION UNTIL ALL INTERESTS HAVE BEEN CONSOLIDATED
OR A NON-STANDARD UNIT HAS BEEN APPROVED BY THE DIVISION

GEODETIC COORDINATES

NAD 27 NME
Y = 551604.4
X = 819831.5



SCALE: 1" = 2000'

OPERATOR CERTIFICATION

I hereby certify the the information
contained herein is true and complete to the
best of my knowledge and belief.

J. K. Ripley
Signature
J. K. Ripley
Printed Name
Regulatory O.A.
Title
3/14/01
Date

SURVEYOR CERTIFICATION

I hereby certify that the well location shown
on this plat was plotted from field notes of
actual surveys made by me or under my
supervision, and that the same is true and
correct to the best of my belief.

FEBRUARY 28, 2001

Date Surveyed
Signature & Seal of
Professional Surveyor

Ronald J. Edson
01-11-0081

Certificate No. RONALD J. EDSON 3239
GARY EDSON 12641