

District I
PO Box 1980, Hobbs, NM 88241-1980

District II
811 South First, Artesia, NM 88210

District III
1000 Rio Brazos Rd., Aztec, NM 87410

District IV
2040 South Pacheco, Santa Fe, NM 87505

State of New Mexico
Energy, Minerals & Natural Resources Department

OIL CONSERVATION DIVISION
2040 South Pacheco
Santa Fe, NM 87505

Form C-101
Revised October 18, 1994
Instructions on back
Submit to Appropriate District Office
State Lease - 6 Copies
Fee Lease - 5 Copies

☐ AMENDED REPORT

APPLICATION FOR PERMIT TO DRILL, RE-ENTER, DEEPEN, PLUGBACK, OR ADD A ZONE

¹ Operator Name and Address John H. Hendrix Corporation P. O. Box 3040 Midland, TX 79702-3040		² OGRID Number 012024
		³ API Number 30 - 025-35523
⁴ Property Code 26644	⁵ Property Name Weatherly "21"	⁶ Well No. 2

⁷Surface Location

UL or lot no.	Section	Township	Range	Lot Idn	Feet from the	North/South line	Feet from the	East/West Line	County
B	21	21S	37E		800	North	2450	East	Lea

⁸Proposed Bottom Hole Location If Different From Surface

UL or lot no.	Section	Township	Range	Lot Idn	Feet from the	North/South line	Feet from the	East/West Line	County
⁹ Proposed Pool 1 Wantz Fusselman					¹⁰ Proposed Pool 2				

¹¹ Work Type Code N	¹² Well Type Code O	¹³ Cable/Rotary R	¹⁴ Lease Type Code P	¹⁵ Ground Level Elevation 3443
¹⁶ Multiple No	¹⁷ Proposed Depth 7600	¹⁸ Formation Fusselman	¹⁹ Contractor -	²⁰ Spud Date

²¹Proposed Casing and Cement Program

Hole Size	Casing Size	Casing weight/foot	Setting Depth	Sacks of Cement	Estimated TOC
17-1/2"	13-3/8"	48#	400	425	Surface
11"	8-5/8"	24 & 32#	3600 ±	2600	Surface
7-7/8"	5-1/2"	15.5#	7600	1200	3000

²²Describe the proposed program. If this application is to DEEPEN or PLUG BACK give the data on the present productive zone and proposed new productive zone. Describe the blowout prevention program, if any. Use additional sheets if necessary.

1. Drill 17-1/4" hole to 400' & set 13-3/8" surface csg. Circ. cement to surface.
2. Drill 11" hole to 3600 ± using 13-5/8" 3000 psi BOP. Set 8-5/8" intermediate csg. & circ. cement to surface.
3. Drill 7-7/8" hole to TD using 13-5/8" 5000 psi BOP. Run electric logs. Set 5-1/2" csg. & cement with coverage to 3000'.
4. Test well as necessary by perforating selective intervals and acidizing.

Permit Expires 1 Year From Approval
Date Unless Drilling Underway

²³I hereby certify that the information given above is true and complete to the best of my knowledge and belief.

Signature: *Ronnie H. Westbrook*

Printed name: Ronnie H. Westbrook

Title: Vice President

OIL CONSERVATION DIVISION

Approved By:

Title:

Approval Date:

Expiration Date:

DISTRICT II
P.O. Drawer 80, Artesia, NM 88211-0718

DISTRICT III
100 Rio Brazos Rd., Artesia, NM 87410

DISTRICT IV
P.O. BOX 2088, SANTA FE, N.M. 87504-2088

OIL CONSERVATION DIVISION
P.O. Box 2088
Santa Fe, New Mexico 87504-2088

☐ AMENDED REPORT

WELL LOCATION AND ACREAGE DEDICATION PLAT

API Number 30-025-3552.3	Pool Code 62710	Pool Name Wantz (Fusselman)
Property Code 26644	Property Name WEATHERLY 21	Well Number 2
OGRID No. 012024	Operator Name JOHN H. HENDRIX CORP.	Elevation 3443

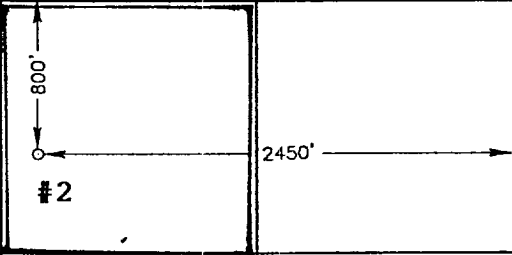
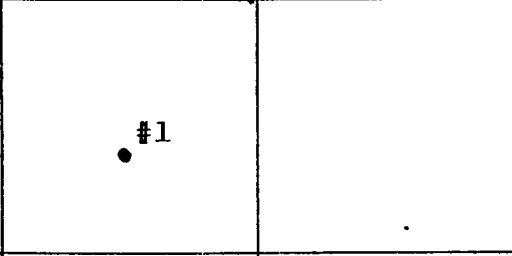
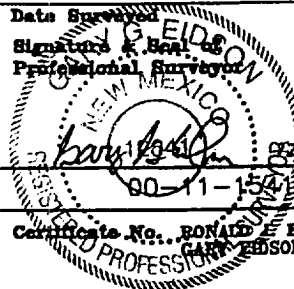
Surface Location

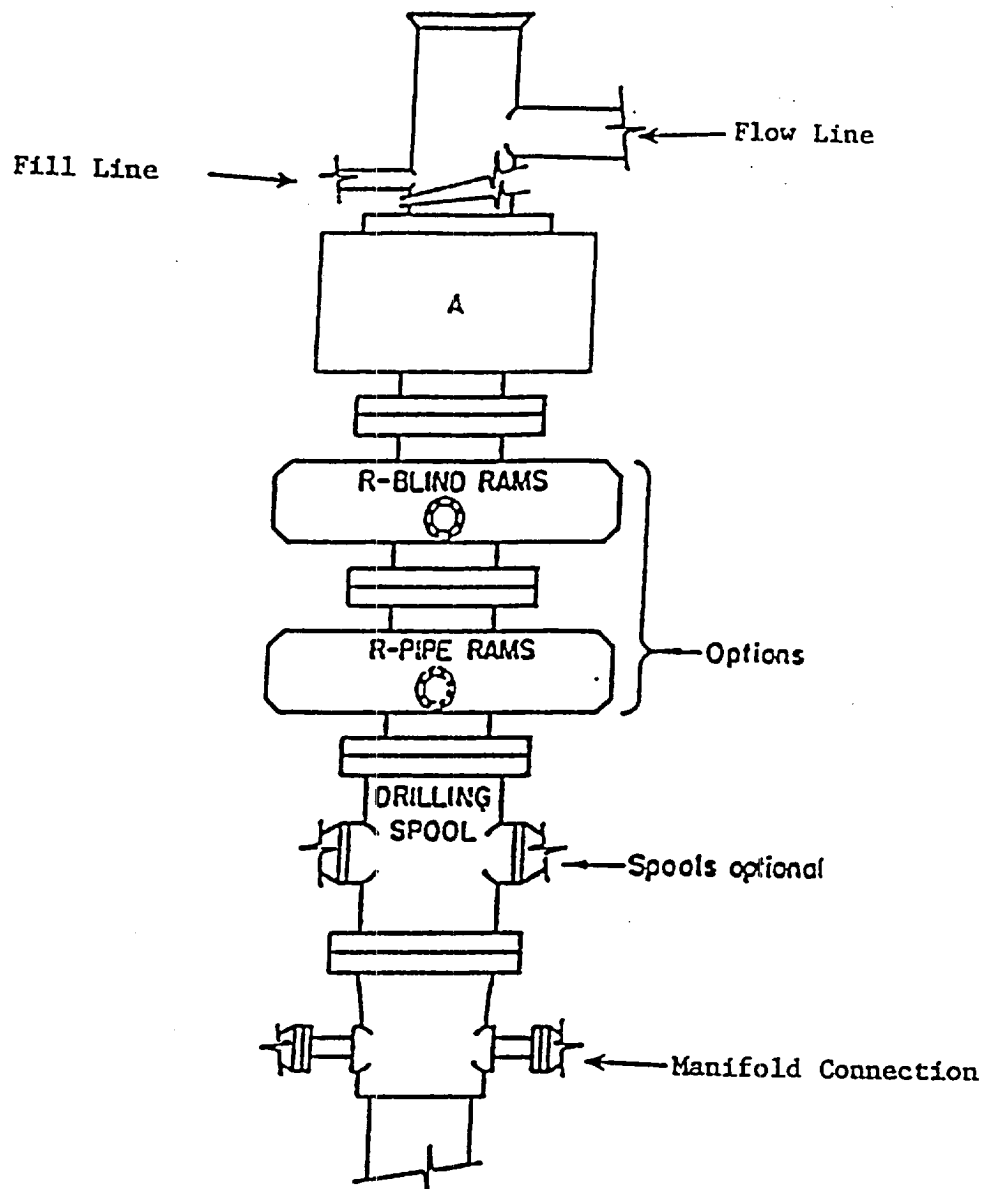
UL or lot No.	Section	Township	Range	Lot Idn	Feet from the	North/South line	Feet from the	East/West line	County
B	21	21S	37 E		800	NORTH	2450	EAST	LEA

Bottom Hole Location If Different From Surface

UL or lot No.	Section	Township	Range	Lot Idn	Feet from the	North/South line	Feet from the	East/West line	County
Dedicated Acres 40	Joint or Infill	Consolidation Code	Order No. NSL-4556						

NO ALLOWABLE WILL BE ASSIGNED TO THIS COMPLETION UNTIL ALL INTERESTS HAVE BEEN CONSOLIDATED
OR A NON-STANDARD UNIT HAS BEEN APPROVED BY THE DIVISION

			OPERATOR CERTIFICATION <p>I hereby certify the the information contained herein is true and complete to the best of my knowledge and belief.</p> <p><i>Ronnie H. Westbrook</i> Signature Ronnie H. Westbrook Printed Name Vice President Title 4/19/01 Date</p>
			SURVEYOR CERTIFICATION <p>I hereby certify that the well location shown on this plat was plotted from field notes of actual surveys made by me or under my supervision and that the same is true and correct to the best of my belief.</p> <p>NOVEMBER 29, 2000 Date Surveyed AWB Signature & Seal of Professional Surveyor  8/14/00 Certificate No. RONALD E. EDSON 3239 PROFESSIONAL SURVEYOR 12641</p>



ARRANGEMENT SRRA

900 Series

3000 PSI WP

JOHN H. HENDRIX CORPORATION
 Sketch of BOP
 To Be Used
 WEATHERLY "21" NO. 2
 800' FNL & 2450' FEL
 Lea County, New Mexico