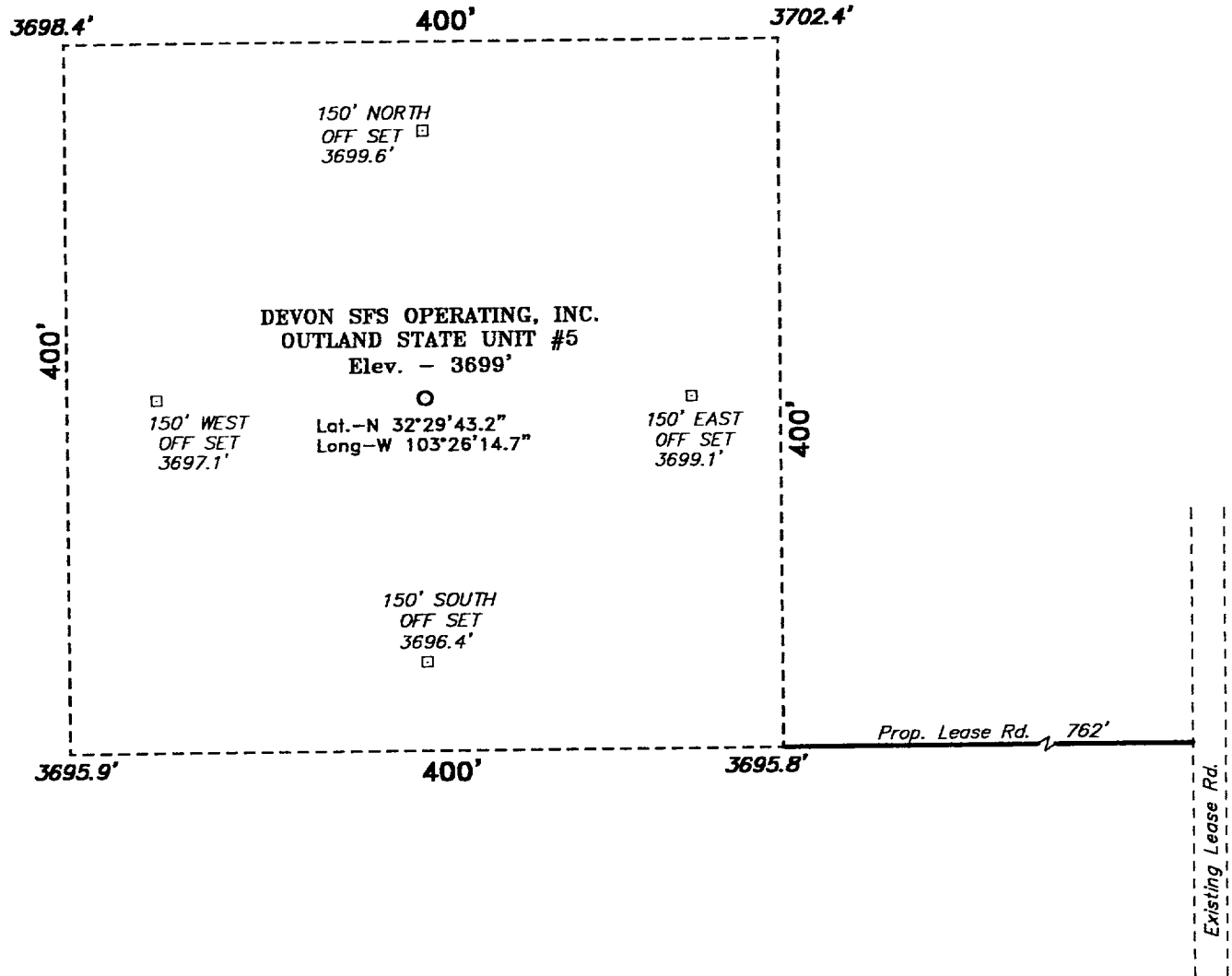
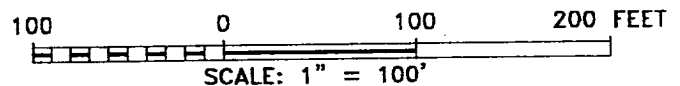


SECTION 11, TOWNSHIP 21 SOUTH, RANGE 34 EAST, N.M.P.M.,  
LEA COUNTY, NEW MEXICO.



Directions to Location:

FROM THE JUNCTION OF STATE HWY 176 AND CO.  
RD. E-35, GO NORTH ON E-35 FOR 0.3 MILES TO  
PROPOSED LEASE ROAD.



**DEVON SFS OPERATING, INC.**

REF: OUTLAND STATE UNIT No. 5 / Well Pad Topo

THE OUTLAND STATE UNIT No. 5 LOCATED 1980' FROM THE  
NORTH LINE AND 1650' FROM THE EAST LINE OF  
SECTION 11, TOWNSHIP 21 SOUTH, RANGE 34 EAST,  
N.M.P.M., LEA COUNTY, NEW MEXICO.

**BASIN SURVEYS** P.O. BOX 1786 - HOBBS, NEW MEXICO

W.O. Number: 1759

Drawn By: **K. GOAD**

Date: 08-14-2001

Disk: KJG CD#4 - 1759A.DWG

Survey Date: 08-13-2001

Sheet 1 of 1 Sheets