

District I
P.O. Box 1980, Hobbs, NM 88241-1980
District II
811 South First, Artesia, NM 88210
District III
1000 Rio Brazos Rd., Aztec, NM 87410
District IV
2040 South Pacheco, Santa Fe, NM 87505

State of New Mexico
Energy, Minerals & Natural Resources Department

OIL CONSERVATION DIVISION
2040 South Pacheco
Santa Fe, NM 87505

Form C-101
Revised October 18, 1994
Instructions on back
Submit to Appropriate District Office
State Lease - 6 Copies
Fee Lease - 5 Copies

☐ AMENDED REPORT

APPLICATION FOR PERMIT TO DRILL, RE-ENTER, DEEPEN, PLUGBACK, OR ADD A ZONE

1 Operator Name and Address Apache Corporation attn: Dennis Bickford; 3rd floor 2000 Post Oak Blvd. Ste. 100 Houston, Texas 77056-4400		2 OGRID Number 873
4 Property Code 23113		3 API Number 30-025- 35708
5 Property Name State "C" Tract 12		6 Well No. 10

7 Surface Location

UL or lot no.	Section	Township	Range	Lot Idn	Feet from the	North/South Line	Feet from the	East/West Line	County
F	16	21-S	37-E		1650	North	1780	West	Lea

8 Proposed Bottom Hole Location If Different From Surface

UL or lot no.	Section	Township	Range	Lot Idn	Feet from the	North/South Line	Feet from the	East/West Line	County
9 Proposed Pool 1 Penrose Skelly: Grayburg (50350)									
10 Proposed Pool 2									

11 Work Type Code N	12 Well Type Code O	13 Cable/Rotary R	14 Lease Type Code S	15 Ground Level Elevation 3478' KB
16 Multiple	17 Proposed Depth 4450'	18 formation Grayburg	19 Contractor	20 Spud Date ASAP

21 Proposed Casing and Cement Program

Hole Size	Casing Size	Casing weight/foot	Setting Depth	Sacks of Cement	Estimated TOC
12 1/4"	8 5/8"	24#	1100'	450 sxs	Circulate to Surf
7 7/8"	5 1/2"	17#	4450'	700 sxs	Circulate to Surf

22 Describe the proposed program. If this application is to DEEPEN or PLUG BACK give the data on the present productive zone and proposed new productive zone. Describe the blowout prevention program, if any. Use additional sheets if necessary.

Propose to drill 12 1/4" hole to 1100' or 50' into Anhydrite Formation, run & set 1100' of 8 5/8" and cement,
Lead: Class "C" + 2% calcium chloride + 0.25 lb/sx cello flake + 0.005% gps FP-6L + 6% bentonite.
Tail: Class "C" + 2% calcium chloride + 0.005 gps FP-6L.
Drill 7 7/8" hole to 4450', run & set 4450' of 5 1/2" casing and cement.
Lead: 35:65 POZ: Class "C" + 5% sodium chloride + 0.25 lb/sx cello flake + 0.005 gps FP-6L + 8% bentonite.
Tail: 50:50 POZ: Class "H" + 5% sodium + .25 lb/sx cello flake + 1% FL-25 + 0.005 gps FP-6L + bentonite.

Blow Out Prevention: See attached copy

23 I hereby certify that the information given above is true and complete to the best of my knowledge and belief.

Signature: *Harold Swain*
Printed Name: Harold Swain
Title: Drilling Foreman
Date: 09/17/2001

Phone: 915-527-3521

OIL CONSERVATION DIVISION	
Approved by: <i>PAUL F. KAUF</i>	
Title: PETROLEUM ENGINEER	
Approval Date: SEP 19 2001	Expiration Date:
Conditions on Approval:	

Permit Expires 1 Year From Approval Date Unless Otherwise Indicated

22A

Handwritten initials

DISTRICT I
P.O. Box 1980, Hobbs, NM 88241-1980

DISTRICT II
P.O. Drawer DD, Artesia, NM 88211-0719

DISTRICT III
1000 Rio Brazos Rd., Aztec, NM 87410

DISTRICT IV
P.O. BOX 2088, SANTA FE, N.M. 87504-2088

State of New Mexico
Energy, Minerals and Natural Resources Department

Form C-102
Revised February 10, 1994
Submit to Appropriate District Office
State Lease - 4 Copies
Fee Lease - 3 Copies

OIL CONSERVATION DIVISION

P.O. Box 2088
Santa Fe, New Mexico 87504-2088

WELL LOCATION AND ACREAGE DEDICATION PLAT

☐ AMENDED REPORT

API Number 30-025- <u>35708</u>	Pool Code 50350	Pool Name Penrose Skelly: Grayburg
Property Code 23113	Property Name STATE "C" TRACT 12	Well Number 10
OGRID No. 873	Operator Name APACHE CORPORATION	Elevation 3478'

Surface Location

UL or lot No. F	Section 16	Township 21-S	Range 37-E	Lot Idn	Feet from the 1650	North/South line NORTH	Feet from the 1780	East/West line WEST	County LEA
--------------------	---------------	------------------	---------------	---------	-----------------------	---------------------------	-----------------------	------------------------	---------------

Bottom Hole Location If Different From Surface

UL or lot No.	Section	Township	Range	Lot Idn	Feet from the	North/South line	Feet from the	East/West line	County
Dedicated Acres <u>40</u>	Joint or Infill	Consolidation Code	Order No.						

NO ALLOWABLE WILL BE ASSIGNED TO THIS COMPLETION UNTIL ALL INTERESTS HAVE BEEN CONSOLIDATED
OR A NON-STANDARD UNIT HAS BEEN APPROVED BY THE DIVISION

	<p>OPERATOR CERTIFICATION</p> <p>I hereby certify the the information contained herein is true and complete to the best of my knowledge and belief.</p> <p><u>Harold Swain</u> Signature</p> <p>Harold Swain Printed Name</p> <p>Drilling Foreman Title</p> <p>9/18/01 Date</p>
	<p>SURVEYOR CERTIFICATION</p> <p>I hereby certify that the well location shown on this plat was plotted from field notes of actual surveys made by me or under my supervision, and that the same is true and correct to the best of my belief.</p> <p>SEPTEMBER 13, 2001</p> <p>Date Surveyed</p> <p>Signature & Seal of Professional Surveyor</p> <p><u>Ronald J. Edson</u> 9/17/01 01.11.1029</p>
	<p>Certificate No. RONALD J. EDSON 3239 GARY EDSON 12641</p>

DISTRICT I
P.O. Box 1980, Hobbs, NM 88241-1980

State of New Mexico
Energy, Minerals and Natural Resources Department

Form C-102
Revised February 10, 1994
Submit to Appropriate District Office
State Lease - 4 Copies
Fee Lease - 3 Copies

DISTRICT II
P.O. Drawer DD, Artesia, NM 88211-0719

OIL CONSERVATION DIVISION

P.O. Box 2088
Santa Fe, New Mexico 87504-2088

DISTRICT III
1000 Rio Brazos Rd., Aztec, NM 87410

DISTRICT IV
P.O. BOX 2088, SANTA FE, N.M. 87504-2088

WELL LOCATION AND ACREAGE DEDICATION PLAT

☐ AMENDED REPORT

API Number 30-025	Pool Code 50350	Pool Name Penrose Skelly: Grayburg
Property Code 23113	Property Name STATE "C" TRACT 12	Well Number 10
OGRID No. 873	Operator Name APACHE CORPORATION	Elevation 3478'

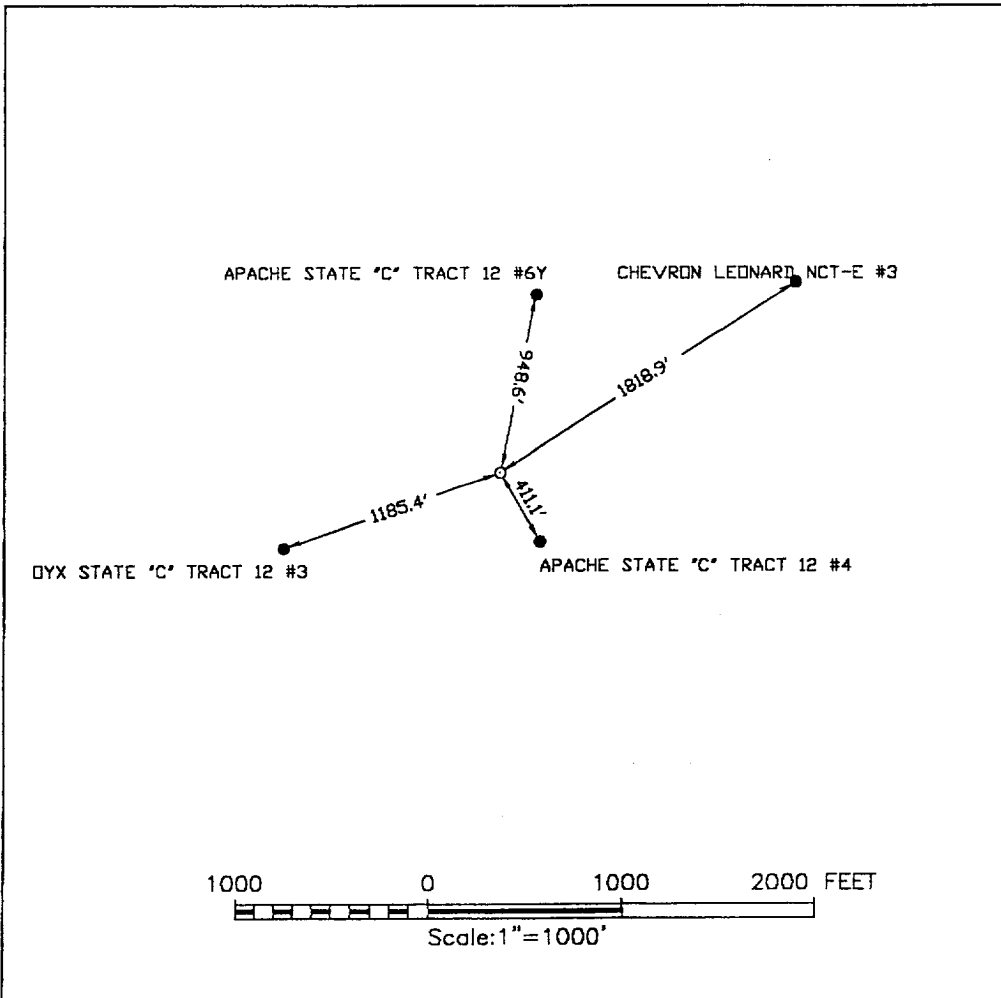
Surface Location

UL or lot No.	Section	Township	Range	Lot Idn	Feet from the	North/South line	Feet from the	East/West line	County
F	16	21-S	37-E		1650	NORTH	1780	WEST	LEA

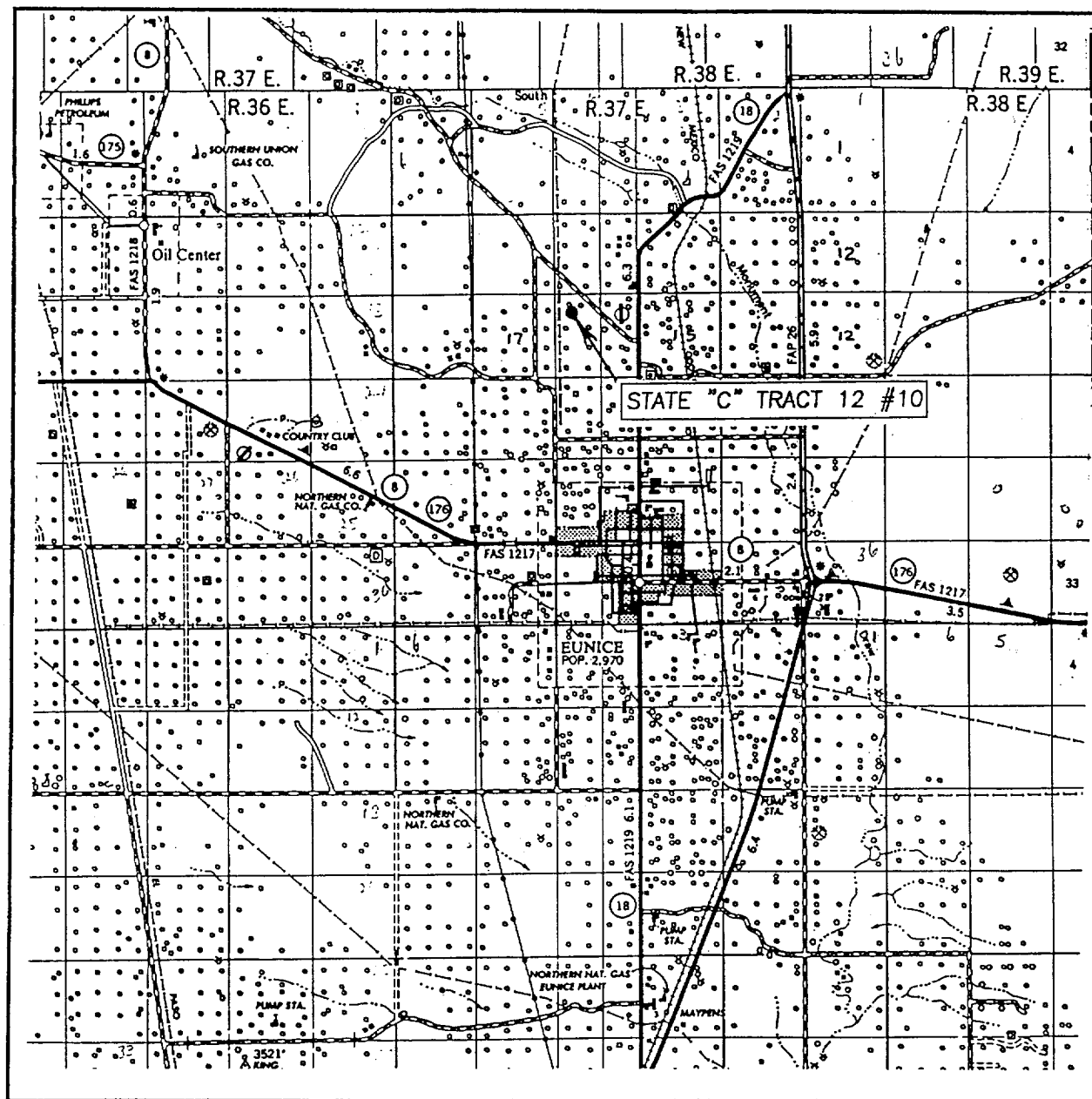
Bottom Hole Location If Different From Surface

UL or lot No.	Section	Township	Range	Lot Idn	Feet from the	North/South line	Feet from the	East/West line	County
Dedicated Acres	Joint or Infill	Consolidation Code	Order No.						

NO ALLOWABLE WILL BE ASSIGNED TO THIS COMPLETION UNTIL ALL INTERESTS HAVE BEEN CONSOLIDATED
OR A NON-STANDARD UNIT HAS BEEN APPROVED BY THE DIVISION

	<p>OPERATOR CERTIFICATION</p> <p>I hereby certify the the information contained herein is true and complete to the best of my knowledge and belief.</p> <p><u>Harold Swain</u> Signature Harold Swain Printed Name Drilling Foreman Title 9/18/01 Date</p> <p>SURVEYOR CERTIFICATION</p> <p>I hereby certify that the well location shown on this plat was plotted from field notes of actual surveys made by me or under my supervision, and that the same is true and correct to the best of my belief.</p> <p>SEPTEMBER 13, 2001</p> <p>Date Surveyed AWB Signature & Seal of Professional Surveyor</p> <p>01.11.1029</p> <p>Certificate No. RONALD J. EIDSON 3239 GARY EIDSON 12641</p>
--	---

VICINITY MAP



SCALE: 1" = 2 MILES

SEC. 16 TWP. 21-S. RGE. 37-E

SURVEY N.M.P.M.

COUNTY LEA

DESCRIPTION 1650' FNL & 1780' FWL

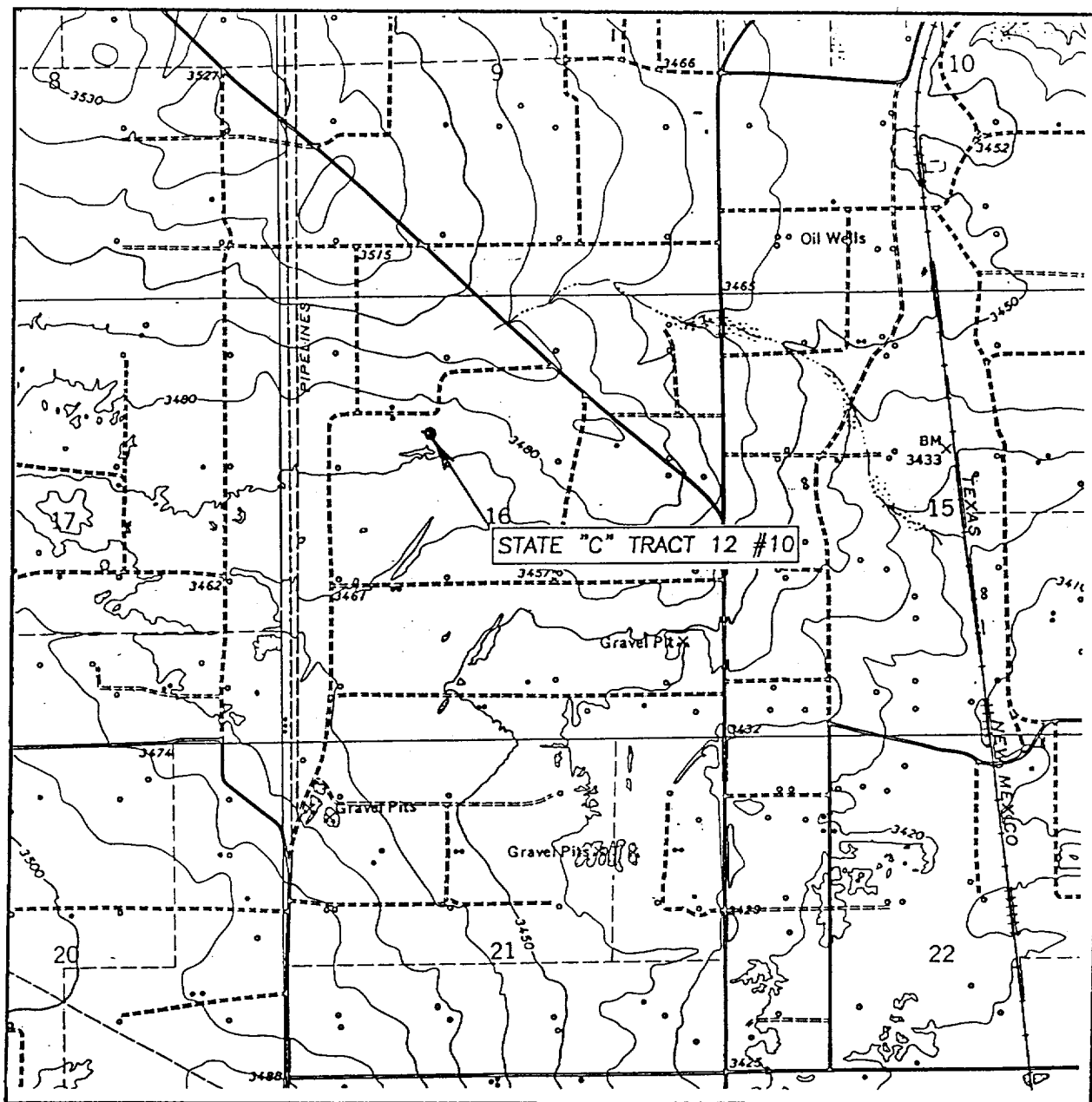
ELEVATION 3478'

OPERATOR APACHE CORPORATION

LEASE STATE "C" TRACT 12

JOHN WEST SURVEYING
HOBBS, NEW MEXICO
(505) 393-3117

LOCATION VERIFICATION MAP



SCALE: 1" = 2000'

CONTOUR INTERVAL: 10'

EUNICE, N.M.

SEC. 16 TWP. 21-S RGE. 37-E

SURVEY N.M.P.M.

COUNTY LEA

DESCRIPTION 1650' FNL & 1780' FWL

ELEVATION 3478'

OPERATOR APACHE CORPORATION

LEASE STATE "C" TRACT 12

U.S.G.S. TOPOGRAPHIC MAP

EUNICE, .NM.

JOHN WEST SURVEYING
HOBBS, NEW MEXICO
(505) 393-3117

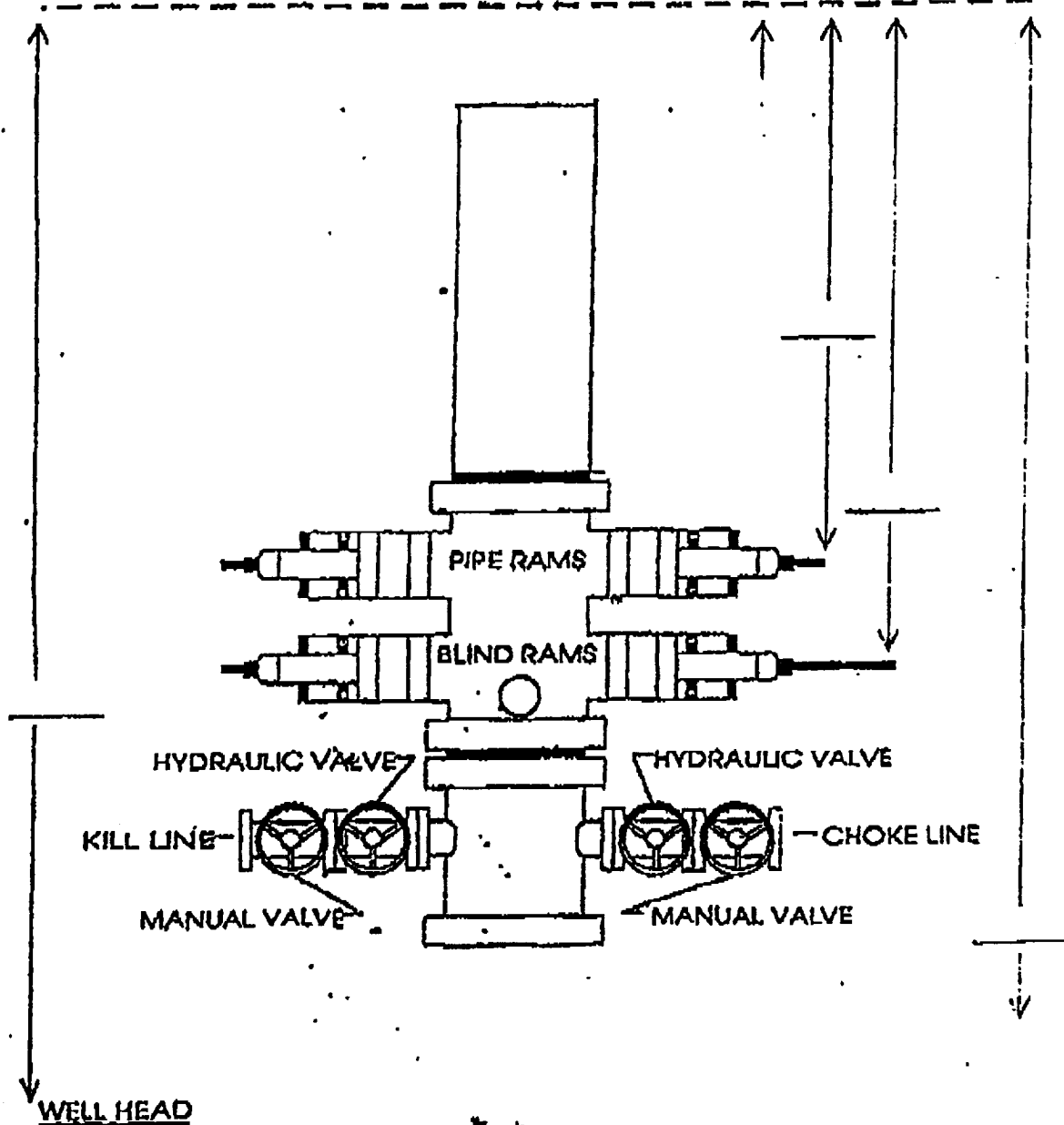
EXHIBIT "H-1"
B.U.P. STACK SPACING

AHEP-3187

SIZE: 11" 3000

TOP OF ROTARY

Rig 5



WELL _____ CONTRACTOR _____

ELF 11/13/01
ABOVE DATE DOES NOT
INDICATE WHEN
CONFIDENTIAL LOGS
WILL BE RELEASED

