

District I  
P.O. Box 1980, Hobbs, NM 88241-1980  
District II  
811 South First, Artesia, NM 88210  
District III  
1000 Rio Brazos Rd., Aztec, NM 87410  
District IV  
2040 South Pacheco, Santa Fe, NM 87505

State of New Mexico  
Energy, Minerals & Natural Resources Department

OIL CONSERVATION DIVISION  
2040 South Pacheco  
Santa Fe, NM 87505

Form C-101  
Revised October 18, 1994  
Instructions on back  
Submit to Appropriate District Office  
State Lease - 6 Copies  
Fee Lease - 5 Copies

☐ AMENDED REPORT

APPLICATION FOR PERMIT TO DRILL, RE-ENTER, DEEPEN, PLUGBACK, OR ADD A ZONE:

1 Operator Name and Address Apache Corporation attn: Dennis Bickford; 3rd floor 2000 Post Oak Blvd. Ste. 100 Houston, Texas 77056-4400		2 OGRID Number 873
4 Property Code 23112		3 API Number 30-025- 35767
5 Property Name Southland Royalty "A"		6 Well No. 12

7 Surface Location

UL or lot no.	Section	Township	Range	Lot Idn	Feet from the	North/South Line	Feet from the	East/West Line	County
H	9	21-S	37-E		1830	North	600	East	Lea

8 Proposed Bottom Hole Location if Different From Surface

UL or lot no.	Section	Township	Range	Lot Idn	Feet from the	North/South Line	Feet from the	East/West Line	County

9 Proposed Pool 1

10 Proposed Pool 2

Penrose Skelly: Grayburg (50350)

11 Work Type Code N	12 Well Type Code O	13 Cable/Rotary R	14 Lease Type Code SP	15 Ground Level Elevation 3464' KB
16 Multiple	17 Proposed Depth 4250	18 formation Grayburg	19 Contractor	20 Spud Date ASAP

21 Proposed Casing and Cement Program

Hole Size	Casing Size	Casing weight/foot	Setting Depth	Sacks of Cement	Estimated TOC
12 1/4"	8 5/8"	24#	1250	435 sxs	Circulate to Surf
7 7/8"	5 1/2"	15.5#	4250	760 sxs	Circulate to Surf

22 Describe the proposed program. If this application is to DEEPEN or PLUG BACK give the data on the present productive zone and proposed new productive zone. Describe the blowout prevention program, if any. Use additional sheets if necessary.

Propose to drill 12 1/4" hole to 1250' or 50' into Anhydrite Formation, run & set 1250' of 8 5/8" and cement,

Lead: 300 sxs Class "C" + additives

Tail: 135 sxs Class "C" + additives

Drill 7 7/8" hole to 4250', run & set 4250' of 5 1/2" casing and cement.

Lead: 510 sxs 35:65 POZ: Class "C" + additives

Tail: 250 sxs Class "C" + additives

Blow Out Prevention: See attached copy

23 I hereby certify that the information given above is true and complete to the best of my knowledge and belief.

Signature: <i>Harold Swain</i>	OIL CONSERVATION DIVISION	
Printed Name: Harold Swain	Approved by:	
Title: Engineering Technician	Title:	
Date: 11/13/2001	Approval Date: 11/13/2001	Expiration Date:
Phone: 915-631-3733	Conditions on Approval:	

Permit Expires 1 Year From Approval  
Date Unless Drilling Underway

SP

☐ AMENDED REPORT

# WELL LOCATION AND ACREAGE DEDICATION PLAT

API Number 30-025-35767	Pool Code 50350	Pool Name Penrose Skelly; Grayburg
Property Code 23112	Property Name SOUTHLAND ROYALTY "A"	Well Number 12
OGRID No. 873	Operator Name APACHE CORPORATION	Elevation 3464

### Surface Location

UL or lot No.	Section	Township	Range	Lot Idn	Feet from the	North/South line	Feet from the	East/West line	County
H	9	21 S	37 E		1830	NORTH	600	EAST	LEA

## Bottom Hole Location If Different From Surface

UL or lot No.	Section	Township	Range	Lot Idn	Feet from the	North/South line	Feet from the	East/West line	County
Dedicated Acres 40	Joint or Infill	Consolidation Code		Order No.					

NO ALLOWABLE WILL BE ASSIGNED TO THIS COMPLETION UNTIL ALL INTERESTS HAVE BEEN CONSOLIDATED  
OR A NON-STANDARD UNIT HAS BEEN APPROVED BY THE DIVISION

[illegible]

DISTRICT I  
P.O. Box 1980, Hobbs, NM 88241-1980

State of New Mexico  
Energy, Minerals and Natural Resources Department

Form C-102  
Revised February 10, 1984  
Submit to Appropriate District Office  
State Lease - 4 Copies  
Fee Lease - 3 Copies

DISTRICT II  
P.O. Drawer DD, Artesia, NM 86211-0719

DISTRICT III  
1000 Rio Brazos Rd., Artec, NM 87410

DISTRICT IV  
P.O. BOX 2088, SANTA FE, N.M. 87504-2088

OIL CONSERVATION DIVISION

P.O. Box 2088  
Santa Fe, New Mexico 87504-2088

☐ AMENDED REPORT

WELL LOCATION AND ACREAGE DEDICATION PLAT

API Number 30-025- <u>35767</u>	Pool Code 50350	Pool Name Penrose Skelly; Grayburg
Property Code 23112	Property Name SOUTHLAND ROYALTY "A"	Well Number 12
OGED No. 873	Operator Name APACHE CORPORATION	Elevation 3464

Surface Location

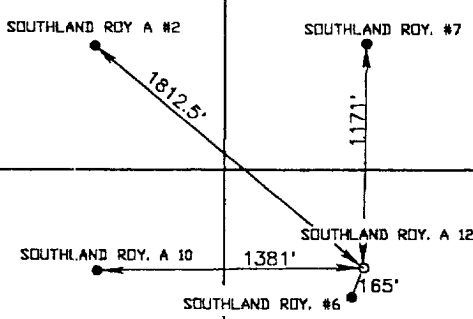
UL or lot No.	Section	Township	Range	Lot Idn	Feet from the	North/South line	Feet from the	East/West line	County
H	9	21 S	37 E		1830	NORTH	600	EAST	LEA

Bottom Hole Location If Different From Surface

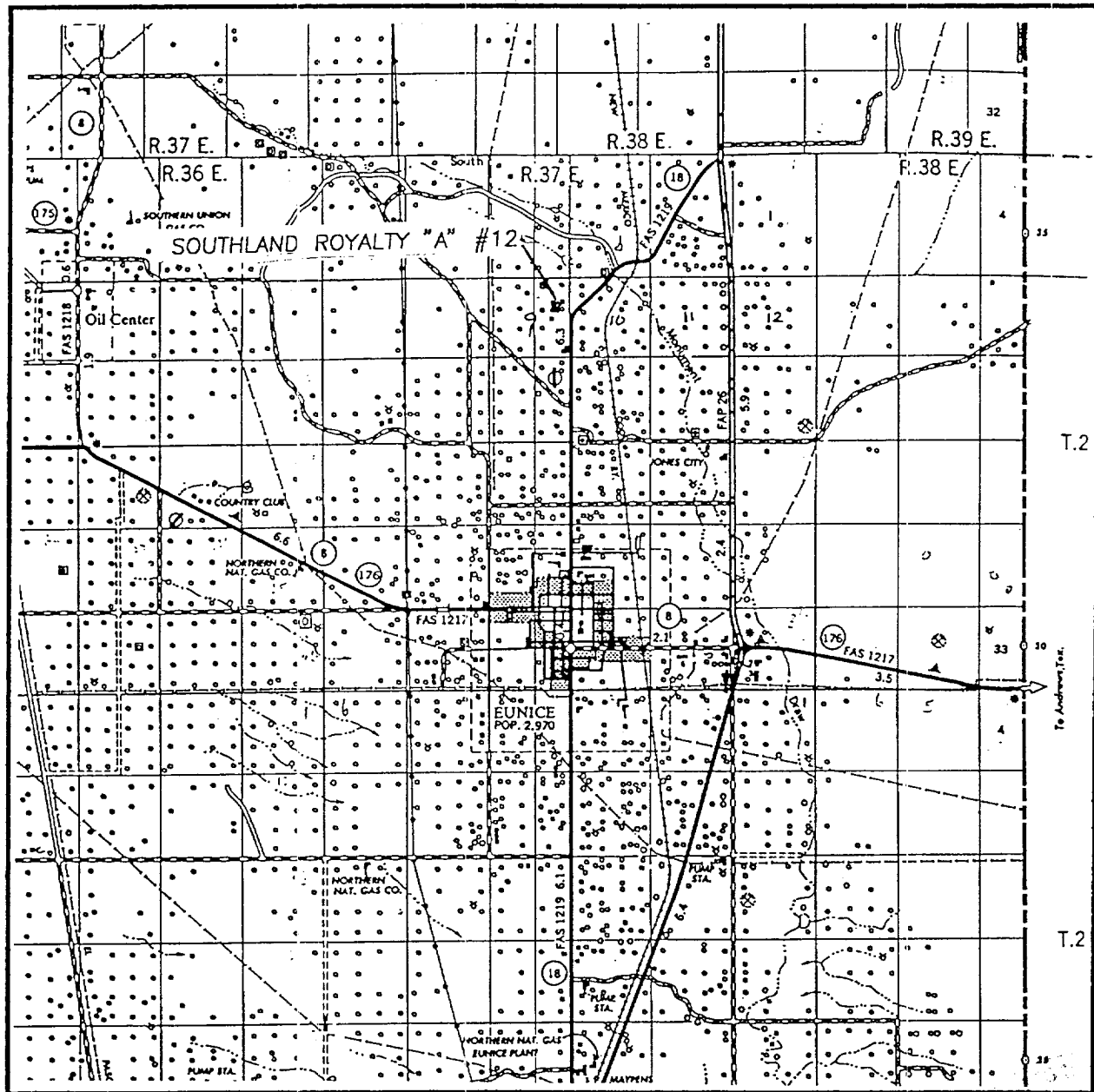
UL or lot No.	Section	Township	Range	Lot Idn	Feet from the	North/South line	Feet from the	East/West line	County
---------------	---------	----------	-------	---------	---------------	------------------	---------------	----------------	--------

Dedicated Acres <u>40</u>	Joint or Infill	Consolidation Code	Order No.
------------------------------	-----------------	--------------------	-----------

NO ALLOWABLE WILL BE ASSIGNED TO THIS COMPLETION UNTIL ALL INTERESTS HAVE BEEN CONSOLIDATED  
OR A NON-STANDARD UNIT HAS BEEN APPROVED BY THE DIVISION

				<b>OPERATOR CERTIFICATION</b> <i>I hereby certify that the information contained herein is true and complete to the best of my knowledge and belief.</i> <u>Harold Swain</u> Signature Harold Swain Printed Name Engineering Tech Title 11/13/01 Date	
<b>SURVEYOR CERTIFICATION</b> <i>I hereby certify that the well location shown on this plat was plotted from field notes of actual surveys made by me or under my supervision, and that the same is true and correct to the best of my belief.</i> NOVEMBER 5, 2001 Date Surveyed Signature & Seal of Professional Surveyor WKT					
01-11-1167					
Certificate No.		RONALD J. EIDSON GARY EIDSON	3239 12641		

# VICINITY MAP



SCALE: 1" = 2 MILES

SEC. 9 TWP. 21-S RGE. 37-E

SURVEY N.M.P.M.

COUNTY LEA

DESCRIPTION 810' FNL & 2080' FEL

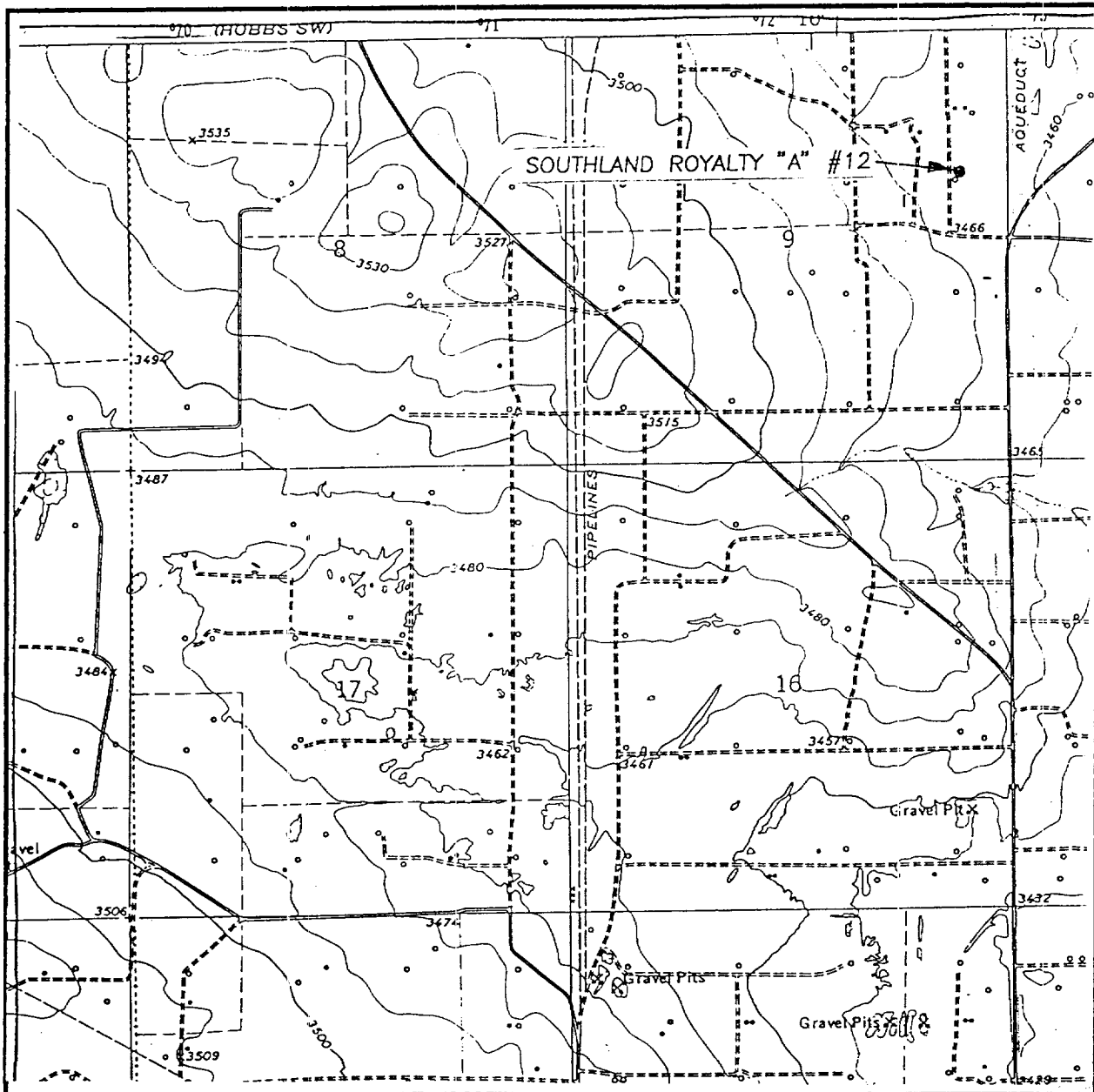
ELEVATION 3464

OPERATOR APACHE CORPORATION

LEASE SOUTHLAND ROYALTY "A"

JOHN WEST SURVEYING  
HOBBS, NEW MEXICO  
(505) 393-3117

# LOCATION VERIFICATION MAP



SCALE: 1" = 2000'

CONTOUR INTERVAL:  
HOBBS SW, N.M. 5'  
EUNICE, N.M. 10'

SEC. 9 TWP. 21-S RGE. 37-E

SURVEY N.M.P.M.

COUNTY LEA

DESCRIPTION 1830' FNL & 600' FEL

ELEVATION 3464

OPERATOR APACHE CORPORATION

LEASE SOUTHLAND ROYALTY "A"

U.S.G.S. TOPOGRAPHIC MAP

HOBBS SW, N.M. EUNICE, N.M.

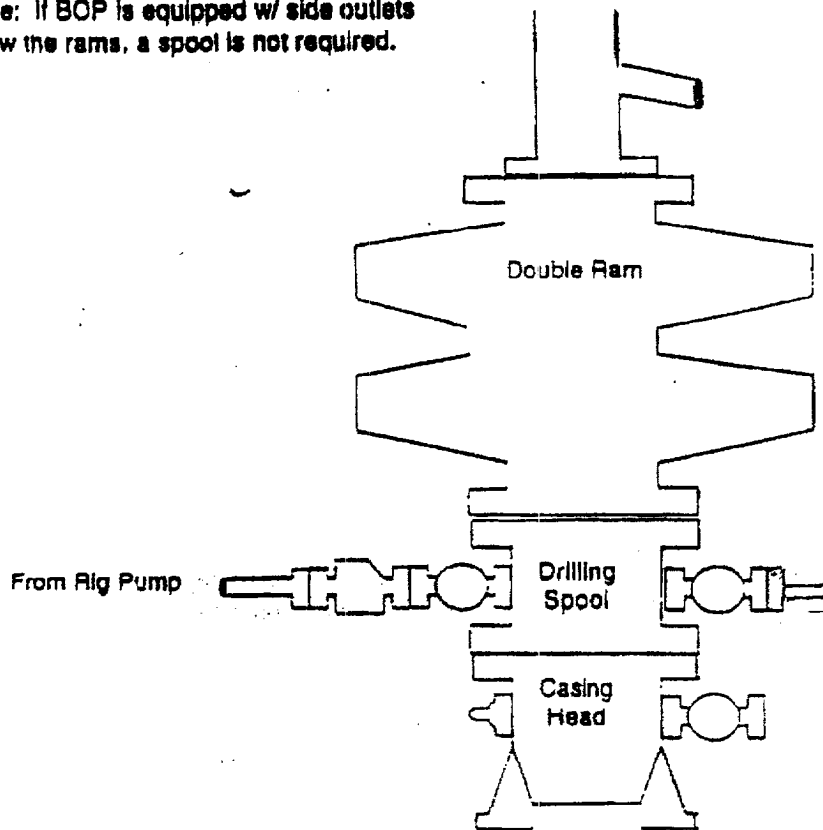
**JOHN WEST SURVEYING**  
**HOBBS, NEW MEXICO**  
**(505) 393-3117**

RECEIVED  
JAN 27 1990  
COUNTY CLERK  
LEA COUNTY, N.M.

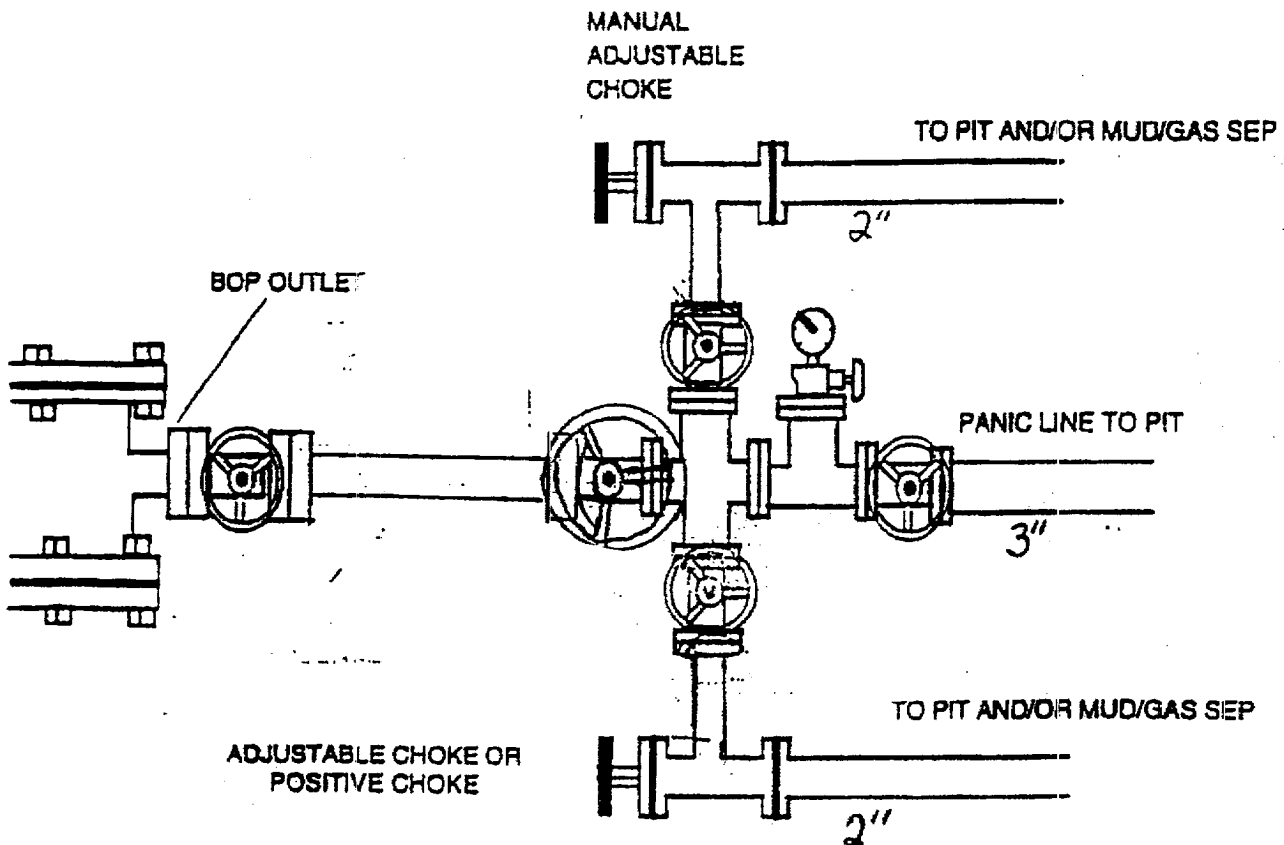
## BOP Schematic

\*Note: If BOP is equipped w/ side outlets below the rams, a spool is not required.

2000 psi WP Double Ram  
Blow-out Preventor. Must be tested  
to 1000 psi prior to drilling out  
6-5/8" surface casing.



## Choke Manifold Schematic



ABOVE DATE DOES NOT  
INDICATE WHEN  
CONFIDENTIAL LOGS  
WILL BE RELEASED

ELF 2/6/02