

District I  
P.O. Box 1980, Hobbs, NM 88241-1980  
District II  
811 South First, Artesia, NM 88210  
District III  
1000 Rio Brazos Rd., Aztec, NM 87410  
District IV  
2040 South Pacheco, Santa Fe, NM 87505

State of New Mexico  
Energy, Minerals & Natural Resources Department

OIL CONSERVATION DIVISION  
2040 South Pacheco  
Santa Fe, NM 87505

Form C-101  
Revised October 18, 1994  
Instructions on back  
Submit to Appropriate District Office  
State Lease - 6 Copies  
Fee Lease - 5 Copies

☐ AMENDED REPORT

APPLICATION FOR PERMIT TO DRILL, RE-ENTER, DEEPEN, PLUGBACK, OR ADD A ZONE

|   |  |                               |
|---|--|-------------------------------|
| 1 Operator Name and Address<br>Apache Corporation attn: Dennis Bickford; 3rd floor<br>2000 Post Oak Blvd. Ste. 100<br>Houston, Texas 77056-4400 |  | 2 OGRID Number<br>873         |
| 4 Property Code<br>23112  |  | 3 API Number<br>30-025- 35768 |
| 5 Property Name<br>Southland Royalty "A"  |  | 6 Well No.<br>13              |

7 Surface Location

| UL or lot no. | Section | Township | Range | Lot Idn | Feet from the | North/South Line | Feet from the | East/West Line | County |
|---------------|---------|----------|-------|---------|---------------|------------------|---------------|----------------|--------|
| 0 W           | 4       | 21-S     | 37-E  |         | 330           | South            | 1980          | East           | Lea    |

8 Proposed Bottom Hole Location If Different From Surface

| UL or lot no.   | Section | Township | Range | Lot Idn | Feet from the      | North/South Line | Feet from the | East/West Line | County |
|---|---------|----------|-------|---------|--------------------|------------------|---------------|----------------|--------|
|   |         |          |       |         |                    |                  |               |                |        |
| 9 Proposed Pool 1<br>Penrose Skelly; Grayburg (50350) |         |          |       |         | 10 Proposed Pool 2 |                  |               |                |        |

|                        |                           |                          |                          |                                       |
|------------------------|---------------------------|--------------------------|--------------------------|---------------------------------------|
| 11 Work Type Code<br>N | 12 Well Type Code<br>O    | 13 Cable/Rotary<br>R     | 14 Lease Type Code<br>SP | 15 Ground Level Elevation<br>3470' KE |
| 16 Multiple            | 17 Proposed Depth<br>4250 | 18 formation<br>Grayburg | 19 Contractor            | 20 Spud Date<br>ASAP                  |

21 Proposed Casing and Cement Program

| Hole Size | Casing Size | Casing weight/foot | Setting Depth | Sacks of Cement | Estimated TOC     |
|-----------|-------------|--------------------|---------------|-----------------|-------------------|
| 12 1/4"   | 8 5/8"      | 24#                | 1250          | 435 sxs         | Circulate to Surf |
| 7 7/8"    | 5 1/2"      | 15.5#              | 4250          | 760 sxs         | Circulate to Surf |
|           |             |                    |               |                 |                   |
|           |             |                    |               |                 |                   |

22 Describe the proposed program. If this application is to DEEPEN or PLUG BACK give the data on the present productive zone and proposed new productive zone. Describe the blowout prevention program, if any. Use additional sheets if necessary.

Propose to drill 12 1/4" hole to 1250' or 50' into Anhydrite Formation, run & set 1250' of 8 5/8" and cement,

Lead: 300 sxs Class "C" + additives

Tail: 135 sxs Class "C" + additives

Drill 7 7/8" hole to 4250', run & set 4250' of 5 1/2" casing and cement.

Lead: 510 sxs 35:65 POZ: Class "C" + additives

Tail: 250 sxs Class "C" + additives

Blow Out Prevention: See attached copy

23 I hereby certify that the information given above is true and complete to the best of my knowledge and belief.

Signature: *Harold Swain*

Printed Name: Harold Swain

Title: Engineering Technician

Date: 11/13/2001

Phone: 915-631-3733

OIL CONSERVATION DIVISION

Approved by:

Title:

Approval Date:

Expiration Date:

Conditions on Approval:

Permit Expires 1 Year From Approval  
Date Unless Drilling Underway

*2*  
*meP*

DISTRICT I  
P.O. Box 1960, Hobbs, NM 88241-1960

DISTRICT II  
P.O. Drawer DD, Artesia, NM 88211-0719

DISTRICT III  
1000 Rio Brazos Rd., Aztec, NM 87410

DISTRICT IV  
P.O. BOX 2062, SANTA FE, N.M. 87504-2062

State of New Mexico  
Energy, Minerals and Natural Resources Department

Form C-102  
Revised February 10, 1994  
Submit to Appropriate District Office  
State Lease - 4 Copies  
Fee Lease - 3 Copies

OIL CONSERVATION DIVISION

P.O. Box 2088  
Santa Fe, New Mexico 87504-2088

☐ AMENDED REPORT

WELL LOCATION AND ACREAGE DEDICATION PLAT

|                                    |  |                                       |
|------------------------------------|--|---------------------------------------|
| API Number<br>30-025- <u>35768</u> | Pool Code<br>50350                     | Pool Name<br>Penrose Skelly; Grayburg |
| Property Code<br>23112             | Property Name<br>SOUTHLAND ROYALTY "A" | Well Number<br>13                     |
| OGRID No.<br>873                   | Operator Name<br>APACHE CORPORATION    | Elevation<br>3470'                    |

Surface Location

|                            |              |                  |               |         |                      |                           |                       |                        |               |
|----------------------------|--------------|------------------|---------------|---------|----------------------|---------------------------|-----------------------|------------------------|---------------|
| UL or lot No.<br><u>ØW</u> | Section<br>4 | Township<br>21 S | Range<br>37 E | Lot Idn | Feet from the<br>330 | North/South line<br>SOUTH | Feet from the<br>1980 | East/West line<br>EAST | County<br>LEA |
|----------------------------|--------------|------------------|---------------|---------|----------------------|---------------------------|-----------------------|------------------------|---------------|

Bottom Hole Location If Different From Surface

|               |         |          |       |         |               |                  |               |                |        |
|---------------|---------|----------|-------|---------|---------------|------------------|---------------|----------------|--------|
| UL or lot No. | Section | Township | Range | Lot Idn | Feet from the | North/South line | Feet from the | East/West line | County |
|---------------|---------|----------|-------|---------|---------------|------------------|---------------|----------------|--------|

|                              |                 |                    |           |
|------------------------------|-----------------|--------------------|-----------|
| Dedicated Acres<br><u>40</u> | Joint or Infill | Consolidation Code | Order No. |
|------------------------------|-----------------|--------------------|-----------|

NO ALLOWABLE WILL BE ASSIGNED TO THIS COMPLETION UNTIL ALL INTERESTS HAVE BEEN CONSOLIDATED  
OR A NON-STANDARD UNIT HAS BEEN APPROVED BY THE DIVISION

|  |  |  |  |  |
|--|--|--|--|--|
|  |  |  |  | <b>OPERATOR CERTIFICATION</b><br><br><i>I hereby certify the information contained herein is true and complete to the best of my knowledge and belief.</i><br><br><u>Harold Swain</u><br>Signature<br>Harold Swain<br>Printed Name<br>Engineering Tech<br>Title<br>11/13/01<br>Date  |
|  |  |  |  |  |
|  |  |  |  |  |
|  |  |  |  |  |
|  |  |  |  | <b>SURVEYOR CERTIFICATION</b><br><br><i>I hereby certify that the well location shown on this plat was plotted from field notes of actual surveys made by me or under my supervision, and that the same is true and correct to the best of my belief.</i><br><br>NOVEMBER 5, 2001<br>Date Surveyed<br>WKT<br>Signature & Seal of Professional Surveyor<br><u>Ronald J. Eidson 11/08/01</u><br>01-11-1168<br>Certificate No. RONALD J. EIDSON 3239<br>GARY EIDSON 12641 |
|  |  |  |  |  |
|  |  |  |  |  |
|  |  |  |  |  |
| GEODETIC COORDINATES<br><br>SPC NMEZ<br>NAD 1927<br>Y=548126.2<br>X=860065.6<br><br>LAT= 32°30'05.36"N<br>LONG= 103°09'55.60"W |  |  |  |  |

DISTRICT I  
P.O. Box 1980, Hobbs, NM 88241-1980

State of New Mexico  
Energy, Minerals and Natural Resources Department

Form C-102  
Revised February 10, 1994  
Submit to Appropriate District Office  
State Lease - 4 Copies  
Fee Lease - 3 Copies

DISTRICT II  
P.O. Drawer DD, Artesia, NM 88211-0719

DISTRICT III  
1000 Rio Brazos Rd., Aztec, NM 87410

DISTRICT IV  
P.O. BOX 2088, SANTA FE, N.M. 87504-2088

OIL CONSERVATION DIVISION  
P.O. Box 2088  
Santa Fe, New Mexico 87504-2088

☐ AMENDED REPORT

WELL LOCATION AND ACREAGE DEDICATION PLAT

|                                    |  |                                       |
|------------------------------------|--|---------------------------------------|
| API Number<br>30-025- <u>35768</u> | Pool Code<br>50350                     | Pool Name<br>Penrose Skelly; Grayburg |
| Property Code<br>23112             | Property Name<br>SOUTHLAND ROYALTY "A" | Well Number<br>13                     |
| OGRID No.<br>873                   | Operator Name<br>APACHE CORPORATION    | Elevation<br>3469                     |

Surface Location

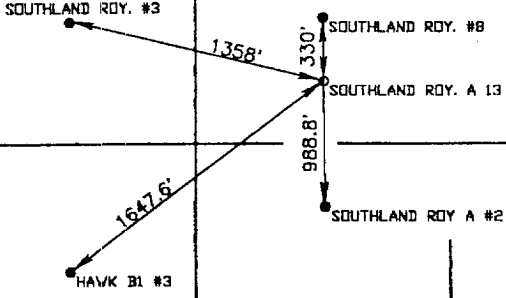
|                            |              |                  |               |         |                      |                           |                       |                        |               |
|----------------------------|--------------|------------------|---------------|---------|----------------------|---------------------------|-----------------------|------------------------|---------------|
| UL or lot No.<br><u>SW</u> | Section<br>4 | Township<br>21 S | Range<br>37 E | Lot Idn | Feet from the<br>330 | North/South line<br>NORTH | Feet from the<br>1980 | East/West line<br>EAST | County<br>LEA |
|----------------------------|--------------|------------------|---------------|---------|----------------------|---------------------------|-----------------------|------------------------|---------------|

Bottom Hole Location If Different From Surface

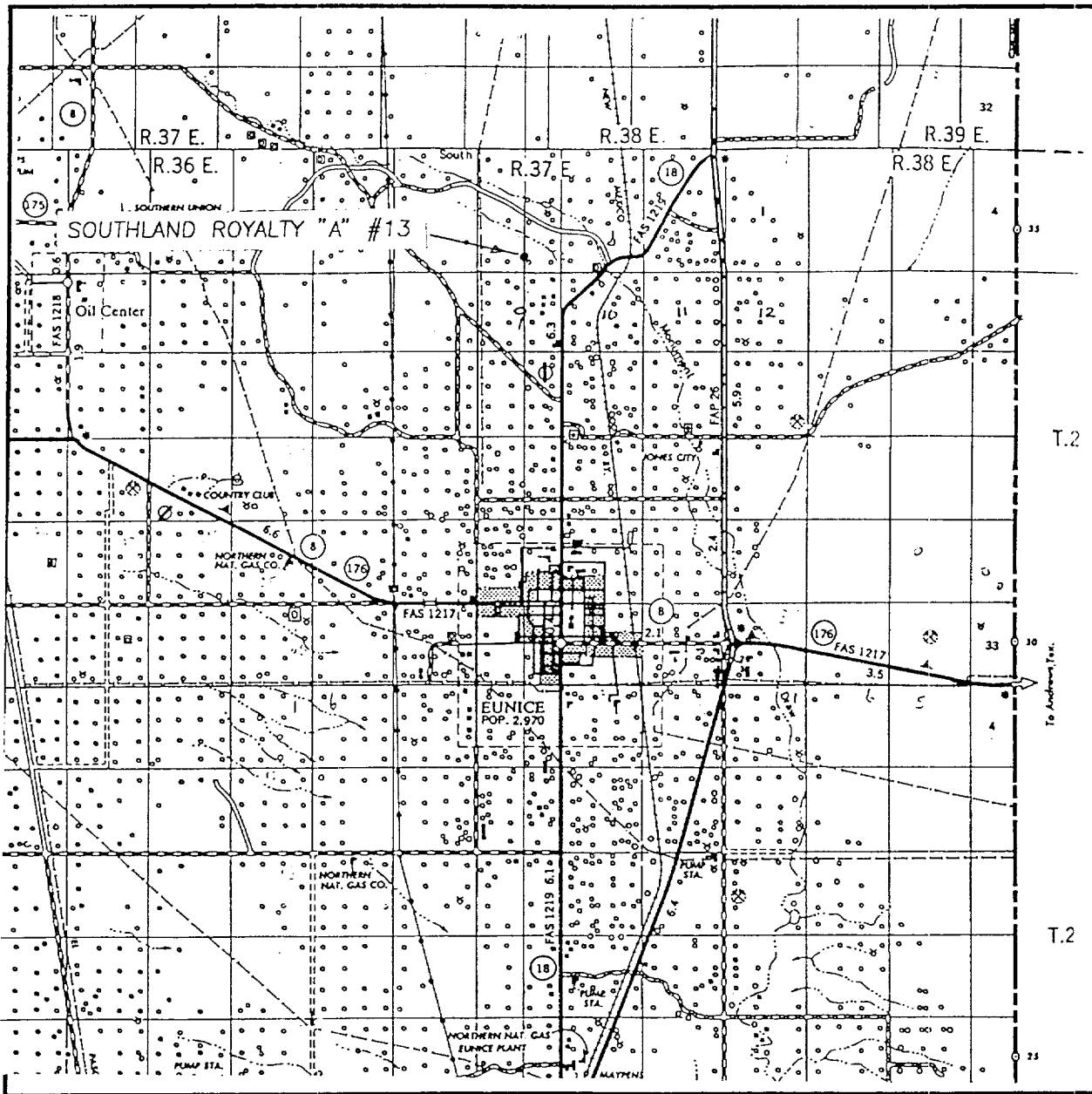
|               |         |          |       |         |               |                  |               |                |        |
|---------------|---------|----------|-------|---------|---------------|------------------|---------------|----------------|--------|
| UL or lot No. | Section | Township | Range | Lot Idn | Feet from the | North/South line | Feet from the | East/West line | County |
|---------------|---------|----------|-------|---------|---------------|------------------|---------------|----------------|--------|

|                              |                 |                    |           |
|------------------------------|-----------------|--------------------|-----------|
| Dedicated Acres<br><u>40</u> | Joint or Infill | Consolidation Code | Order No. |
|------------------------------|-----------------|--------------------|-----------|

NO ALLOWABLE WILL BE ASSIGNED TO THIS COMPLETION UNTIL ALL INTERESTS HAVE BEEN CONSOLIDATED  
OR A NON-STANDARD UNIT HAS BEEN APPROVED BY THE DIVISION

|   |  |  |  |   |  |
|---|--|--|--|---|--|
|    |  |  |  | <p>OPERATOR CERTIFICATION</p> <p>I hereby certify the the information contained herein is true and complete to the best of my knowledge and belief.</p> <p><u>Harold Swain</u><br/>Signature<br/>Harold Swain<br/>Printed Name<br/>Engineering Tech<br/>Title<br/>11/13/01<br/>Date</p> |  |
| <p>SURVEYOR CERTIFICATION</p> <p>I hereby certify that the well location shown on this plat was plotted from field notes of actual surveys made by me or under my supervision, and that the same is true and correct to the best of my belief.</p> <p>NOVEMBER 5, 2001<br/>Date Surveyed<br/>WKT<br/>Signature &amp; Seal of Professional Surveyor</p> <p>01-11-1168</p> <p>Certificate No. RONALD J. EIDSON 3239<br/>GARY EIDSON 12641</p> |  |  |  |   |  |

# VICINITY MAP



SCALE: 1" = 2 MILES

SEC. 4 TWP. 21-S. RGE. 37-E

SURVEY N.M.P.M.

COUNTY LEA

DESCRIPTION 810' FNL & 2080' FEL

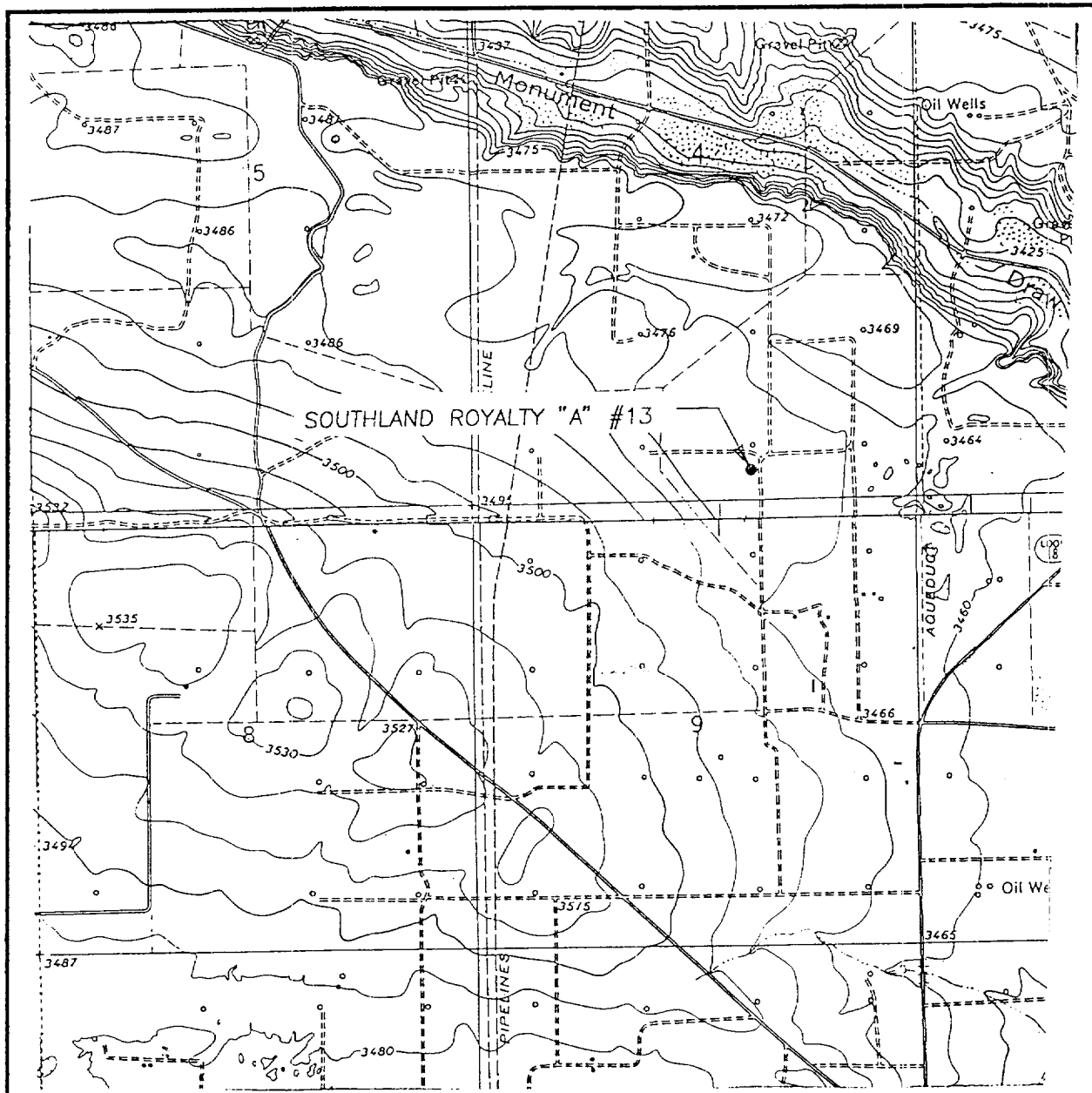
ELEVATION 3470'

OPERATOR APACHE CORPORATION

LEASE SOUTHLAND ROYALTY "A"

JOHN WEST SURVEYING  
HOBBS, NEW MEXICO  
(505) 393-3117

# LOCATION, VERIFICATION MAP



SCALE: 1" = 2000'

CONTOUR INTERVAL:  
HOBBS SW, N.M. 5'  
EUNICE, N.M. 10'

SEC. 4 TWP. 21-S RGE. 37-E

SURVEY N.M.P.M.

COUNTY LEA

DESCRIPTION 330' FSL & 1980' FEL

ELEVATION 3470

OPERATOR APACHE CORPORATION

LEASE SOUTHLAND ROYALTY "A"

U.S.G.S. TOPOGRAPHIC MAP

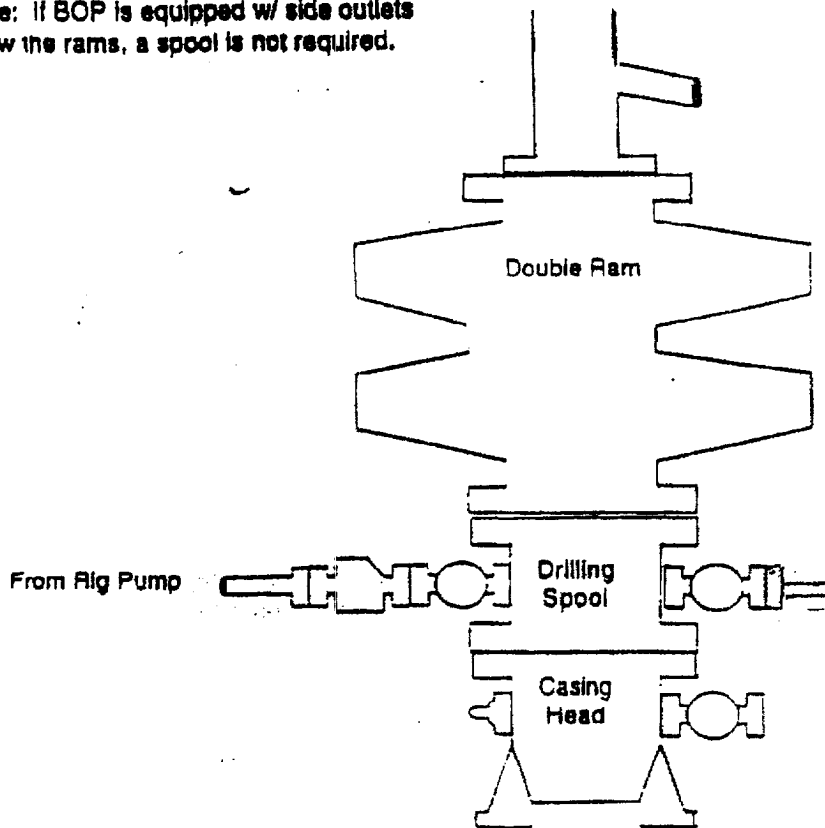
HOBBS SW, N.M. EUNICE, N.M.

**JOHN WEST SURVEYING**  
**HOBBS, NEW MEXICO**  
**(505) 393-3117**

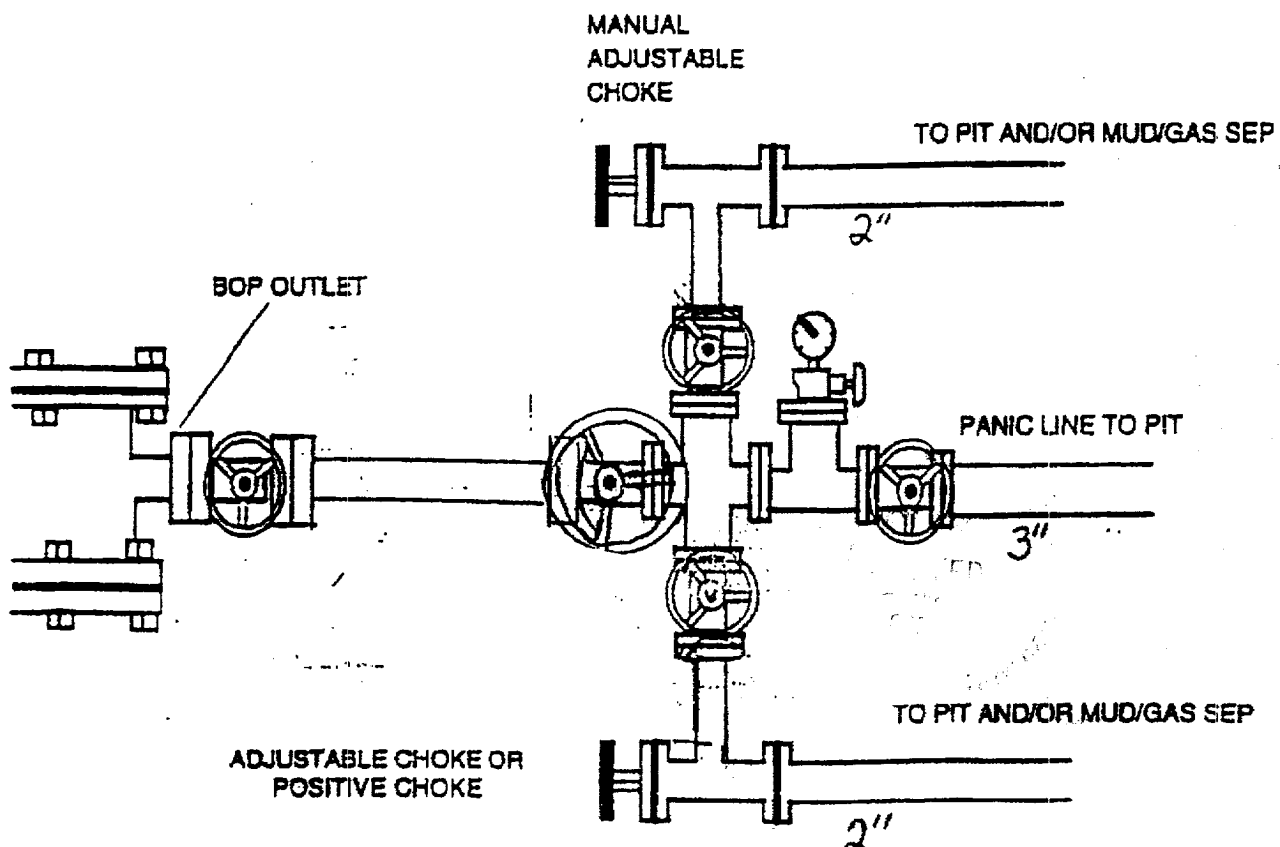
## BOP Schematic

\*Note: If BOP is equipped w/ side outlets below the rams, a spool is not required.

2000 psi WP Double Ram  
Blow-out Preventor. Must be tested  
to 1000 psi prior to drilling out  
8-5/8" surface casing.



## Choke Manifold Schematic



ELF  
\_\_\_\_\_  
10/12/02

ABOVE DATE DOES NOT  
INDICATE WHEN  
CONFIDENTIAL LOGS  
WILL BE RELEASED