

DISTRICT I  
P.O. Box 1980, Hobbs, NM 88241-1980

DISTRICT II  
P.O. Drawer DD, Artesia, NM 88211-0719

DISTRICT III  
1000 Rio Brazos Rd., Aztec, NM 87410

DISTRICT IV  
P.O. BOX 2088, SANTA FE, N.M. 87504-2088

State of New Mexico  
Energy, Minerals and Natural Resources Department

OIL CONSERVATION DIVISION

P.O. Box 2088  
Santa Fe, New Mexico 87504-2088

Form C-102  
Revised February 10, 1994  
Submit to Appropriate District Office  
State Lease - 4 Copies  
Fee Lease - 3 Copies

WELL LOCATION AND ACREAGE DEDICATION PLAT

☐ AMENDED REPORT

API Number 30-025-35830	Pool Code 49210	Pool Name Paddock
Property Code 22880	Property Name TURNER	Well Number 19
OGRID No. 873	Operator Name APACHE CORPORATION	Elevation 3407'

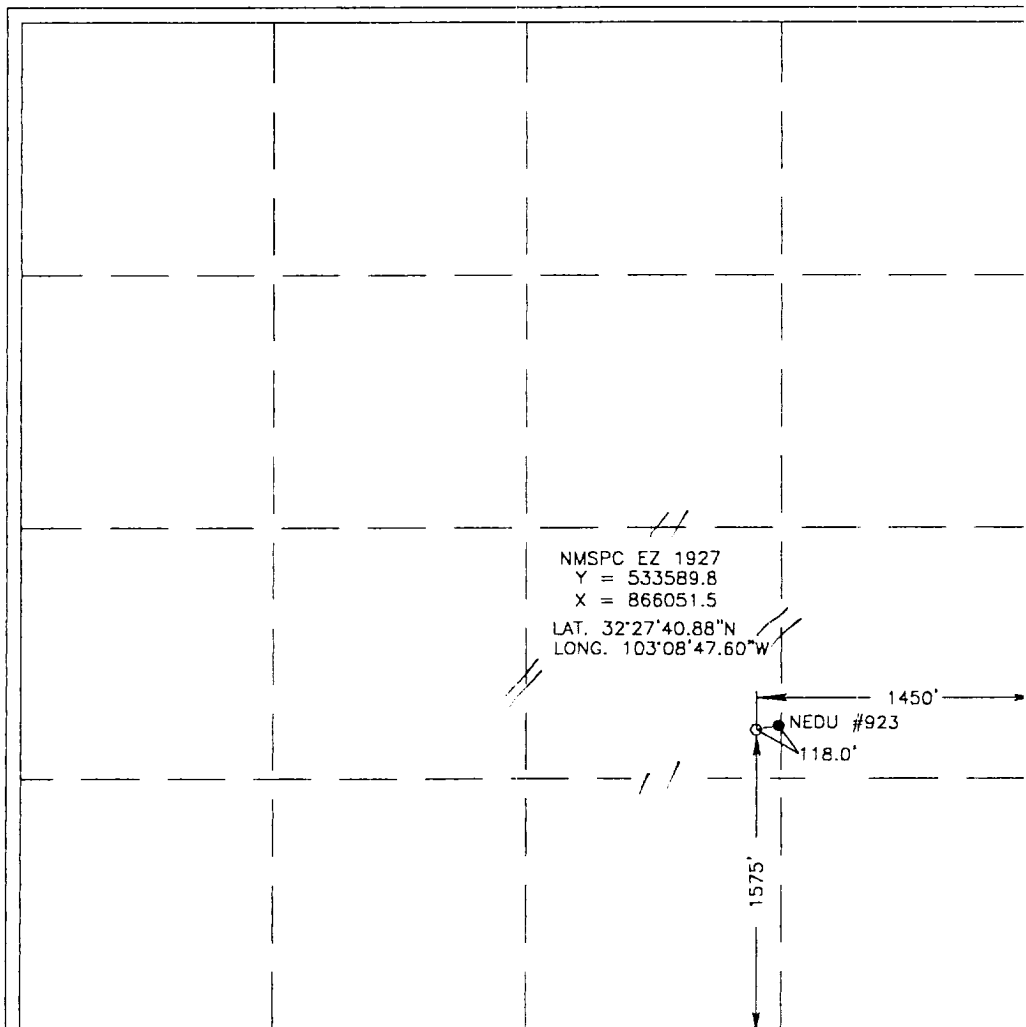
Surface Location

UL or lot No. J	Section 22	Township 21-S	Range 37-E	Lot Idn	Feet from the 1575	North/South line SOUTH	Feet from the 1450	East/West line EAST	County LEA
--------------------	---------------	------------------	---------------	---------	-----------------------	---------------------------	-----------------------	------------------------	---------------

Bottom Hole Location If Different From Surface

UL or lot No.	Section	Township	Range	Lot Idn	Feet from the	North/South line	Feet from the	East/West line	County
Dedicated Acres 40	Joint or Infill	Consolidation Code	Order No. NS4-4115-A						

NO ALLOWABLE WILL BE ASSIGNED TO THIS COMPLETION UNTIL ALL INTERESTS HAVE BEEN CONSOLIDATED  
OR A NON-STANDARD UNIT HAS BEEN APPROVED BY THE DIVISION



OPERATOR CERTIFICATION

I hereby certify the the information  
contained herein is true and complete to the  
best of my knowledge and belief.

*Harold Swain*  
Signature

Harold Swain  
Printed Name

Eng. Tech.  
Title

02/04/02  
Date

SURVEYOR CERTIFICATION

I hereby certify that the well location shown  
on this plat was plotted from field notes of  
actual surveys made by me or under my  
supervision and that the same is true and  
correct to the best of my belief.

DECEMBER 18, 2001

Date Surveyed  
Signature & Seal of  
Professional Surveyor

*Gary E. Edson*  
01.11.1297

Certificate No. RONALD J. EIDSON 3239  
GARY EDSON 12841