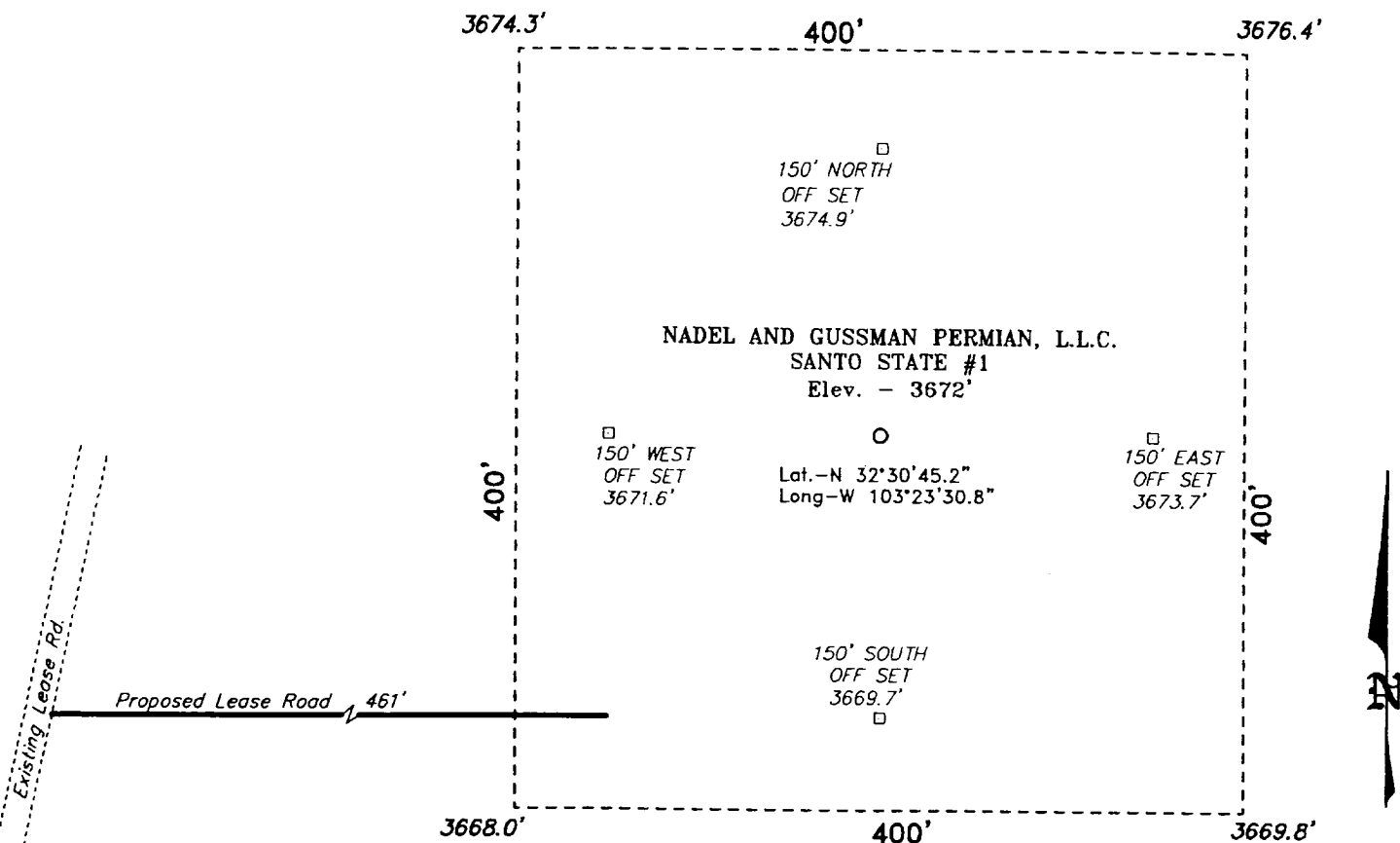


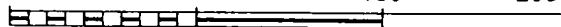
SECTION 5, TOWNSHIP 21 SOUTH, RANGE 35 EAST, N.M.P.M.,
LEA COUNTY, NEW MEXICO.



DIRECTIONS TO LOCATION:

FROM EUNICE, GO WEST ON STATE HWY 176 FOR 12 MILES TO CO. RD. E30; THENCE NORTH AND NORTHEAST ON E30 FOR APPROX. 1.5 MILES TO A LEASE ROAD; THENCE CONTINUE NORTHEAST ON LEASE ROAD FOR APPROX. 1.5 MILES TO A PROPOSED LEASE ROAD.

100 0 100 200 FEET



SCALE: 1" = 100'

NADEL AND GUSSMAN PERMIAN, L.L.C.

REF: SANTO STATE #1 / Well Pad Topo

THE SANTO STATE No. 1 LOCATED 4290' FROM THE SOUTH LINE AND 1980' FROM THE WEST LINE OF SECTION 5, TOWNSHIP 21 SOUTH, RANGE 35 EAST, N.M.P.M., LEA COUNTY, NEW MEXICO.

BASIN SURVEYS P.O. BOX 1786-HOBBS, NEW MEXICO

W.O. Number: 2276 Drawn By: K. GOAD

Date: 02-08-2002 Drawn By: KIC CD#4 2276A.DWG

ABOVE DATE DOES NOT
INDICATE WHEN
CONFIDENTIAL LOGS
WILL BE RELEASED

ELF 7/22/02