

District I
1625 N. French Dr., Hobbs, NM 88240

District II
811 South First, Artesia, NM 88210

District III
1000 Rio Brazos Rd., Aztec, NM 87410

District IV
1220 South St. Francis Dr., Santa Fe, NM 87505

State of New Mexico
Energy, Minerals & Natural Resources Department

Form C-101
Revised March 17, 1999

OIL CONSERVATION DIVISION
1220 South St. Francis Drive
Santa Fe, NM 87505

Submit to appropriate District Office
State Lease - 6 Copies
Fee Lease - 5 Copies

☐ AMENDED REPORT

APPLICATION FOR PERMIT TO DRILL, RE-ENTER, DEEPEN, PLUGBACK, OR ADD A ZONE

1 Operator Name and Address Apache Corporation 6120 South Yale Tulsa, OK 74136-4224		2 OGRID Number 000873
4 Property Code 29727	5 Property Name Dauron	3 API Number 30-025-35905
		6 Well No. 4

7 Surface Location									
UL or lot no.	Section	Township	Range	Lot Idn	Feet from the	North/South Line	Feet from the	East/West Line	County
A	10	21S	37E		550'	NORTH	740'	EAST	LEA

8 Proposed Bottom Hole Location If Different From Surface									
UL or lot no.	Section	Township	Range	Lot Idn	Feet from the	North/South Line	Feet from the	East/West Line	County
9 Proposed Pool 1 Penrose Skelly: Grayburg (50350)					10 Proposed Pool 2				

11 Work Type Code N	12 Well Type Code O	13 Cable/Rotary R	14 Lease Type Code LP	15 Ground Level Elevation 3442' KB
16 Multiple	17 Proposed Depth 4200'	18 Formation Grayburg	19 Contractor Capstar	20 Spud Date 5/28/2002

21 Proposed Casing and Cement Program					
Hole Size	Casing Size	Casing weight/foot	Setting Depth	Sacks of Cement	Estimated TOC
12-1/4"	8-5/8"	24#	400'	435 sxs	Circ to Surf
7-7/8"	5-1/2"	17#	4200'	760 sxs	Circ to Surf

22 Describe the proposed program. If this application is to DEEPEN or PLUG BACK give the data on the present productive zone and proposed new productive zone. Describe the blowout prevention program, if any. Use additional sheets if necessary.

Propose to drill 12-1/4" hole to 400', run & set 400' of 8-5/8" casing and cement

Tail: 350 sxs Class 'C' + additives

Drill 7-7/8" hole to 4200', run & set 4200' of 5-1/2" casing and cement

Lead: 510 sxs 35:65 POZ: Class 'C' + additives

Tail: 250 sxs Class 'C' + additives

Permit Expires 1 Year From Approval
Date Unless Drilling Underway

23 I hereby certify that the information given above is true and complete to the best of my knowledge and belief.

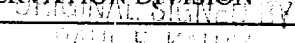
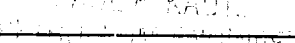
Signature: Gary L. Poulain

Printed Name: Gary L. Poulain

Title: Sr. Staff Drilling Engineer

Date: 5/7/2002

Phone: 918/491-4803

OIL CONSERVATION DIVISION	
Approved by: 	
Title: 	
Approval Date: MAY 13 2002	Expiration Date:
Conditions of Approval:	
Attached <input type="checkbox"/>	

52A

MP

DISTRICT I

P.O. Box 1980, Hobbs, NM 88241-1980

DISTRICT II

P.O. Drawer DD, Artesia, NM 88211-0719

DISTRICT III

1000 Rio Brazos Rd., Aztec, NM 87410

DISTRICT IV

P.O. BOX 2088, SANTA FE, N.M. 87504-2088

State of New Mexico

Energy, Minerals and Natural Resources Department

Form C-102

Revised February 10, 1994

Submit to Appropriate District Office

State Lease - 4 Copies

Fee Lease - 3 Copies

OIL CONSERVATION DIVISION

P.O. Box 2088

Santa Fe, New Mexico 87504-2088

WELL LOCATION AND ACREAGE DEDICATION PLAT

☐ AMENDED REPORT

API Number 30-025-35905	Pool Code 50350	Pool Name PENROSE SKELLY GRAYBURG
Property Code 29727	Property Name DAURON	Well Number 4
OGRID No. 873	Operator Name APACHE CORPORATION	Elevation 3442'

Surface Location

UL or lot No.	Section	Township	Range	Lot Idn	Feet from the	North/South line	Feet from the	East/West line	County
A	10	21-S	37-E		550	NORTH	740	EAST	LEA

Bottom Hole Location If Different From Surface

UL or lot No.	Section	Township	Range	Lot Idn	Feet from the	North/South line	Feet from the	East/West line	County

Dedicated Acres 40 ACRES	Joint or Infill	Consolidation Code	Order No.
------------------------------------	-----------------	--------------------	-----------

NO ALLOWABLE WILL BE ASSIGNED TO THIS COMPLETION UNTIL ALL INTERESTS HAVE BEEN CONSOLIDATED
OR A NON-STANDARD UNIT HAS BEEN APPROVED BY THE DIVISION

	OPERATOR CERTIFICATION I hereby certify the the information contained herein is true and complete to the best of my knowledge and belief. <u>Harold Swain</u> Signature <u>HAROLD SWAIN</u> Printed Name <u>DRILLING FOREMAN</u> Title <u>05/07/02</u> Date
	SURVEYOR CERTIFICATION I hereby certify that the well location shown on this plat was plotted from field notes of actual surveys made by me or under my supervision, and that the same is true and correct to the best of my belief. <u>APRIL 15, 2002</u> Date Surveyed Signature & Seal of Professional Surveyor
	APRIL 15, 2002 Date Surveyed Signature & Seal of Professional Surveyor
	Certificate No. <u>RONALD J. EDSON 8239</u> GARY EDSON 12641

DISTRICT I
P.O. Box 1980, Hobbs, NM 88241-1980

State of New Mexico
Energy, Minerals and Natural Resources Department

Form C-102
Revised February 10, 1994
Submit to Appropriate District Office
State Lease - 4 Copies
Fee Lease - 3 Copies

DISTRICT II
P.O. Drawer DD, Arlesia, NM 88211-0719

OIL CONSERVATION DIVISION

P.O. Box 2088
Santa Fe, New Mexico 87504-2088

DISTRICT III
1000 Rio Brazos Rd., Aztec, NM 87410

DISTRICT IV
P.O. BOX 2088, SANTA FE, N.M. 87504-2088

WELL LOCATION AND ACREAGE DEDICATION PLAT

☐ AMENDED REPORT

API Number	Pool Code 50350	Pool Name PENROSE SKELLY GRAYBURG
Property Code	Property Name DAURON	Well Number 4
GRID No. 873	Operator Name APACHE CORPORATION	Elevation 3442'

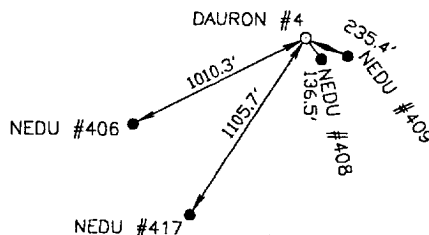
Surface Location

UL or lot No.	Section	Township	Range	Lot Idn	Feet from the	North/South line	Feet from the	East/West line	County
A	10	21-S	37-E		550	NORTH	740	EAST	LEA

Bottom Hole Location If Different From Surface

UL or lot No. 40 ACRES	Section	Township	Range	Lot Idn	Feet from the	North/South line	Feet from the	East/West line	County
Dedicated Acres	Joint or Infill	Consolidation Code	Order No.						

NO ALLOWABLE WILL BE ASSIGNED TO THIS COMPLETION UNTIL ALL INTERESTS HAVE BEEN CONSOLIDATED
OR A NON-STANDARD UNIT HAS BEEN APPROVED BY THE DIVISION



OPERATOR CERTIFICATION

I hereby certify the the information
contained herein is true and complete to the
best of my knowledge and belief.

Harold Swain
Signature

HAROLD SWAIN
Printed Name

DRILLING FOREMAN
Title

05/07/02
Date

SURVEYOR CERTIFICATION

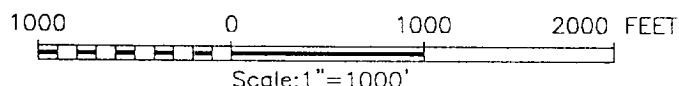
I hereby certify that the well location shown
on this plat was plotted from field notes of
actual surveys made by me or under my
supervision, and that the same is true and
correct to the best of my belief.

APRIL 15, 2002

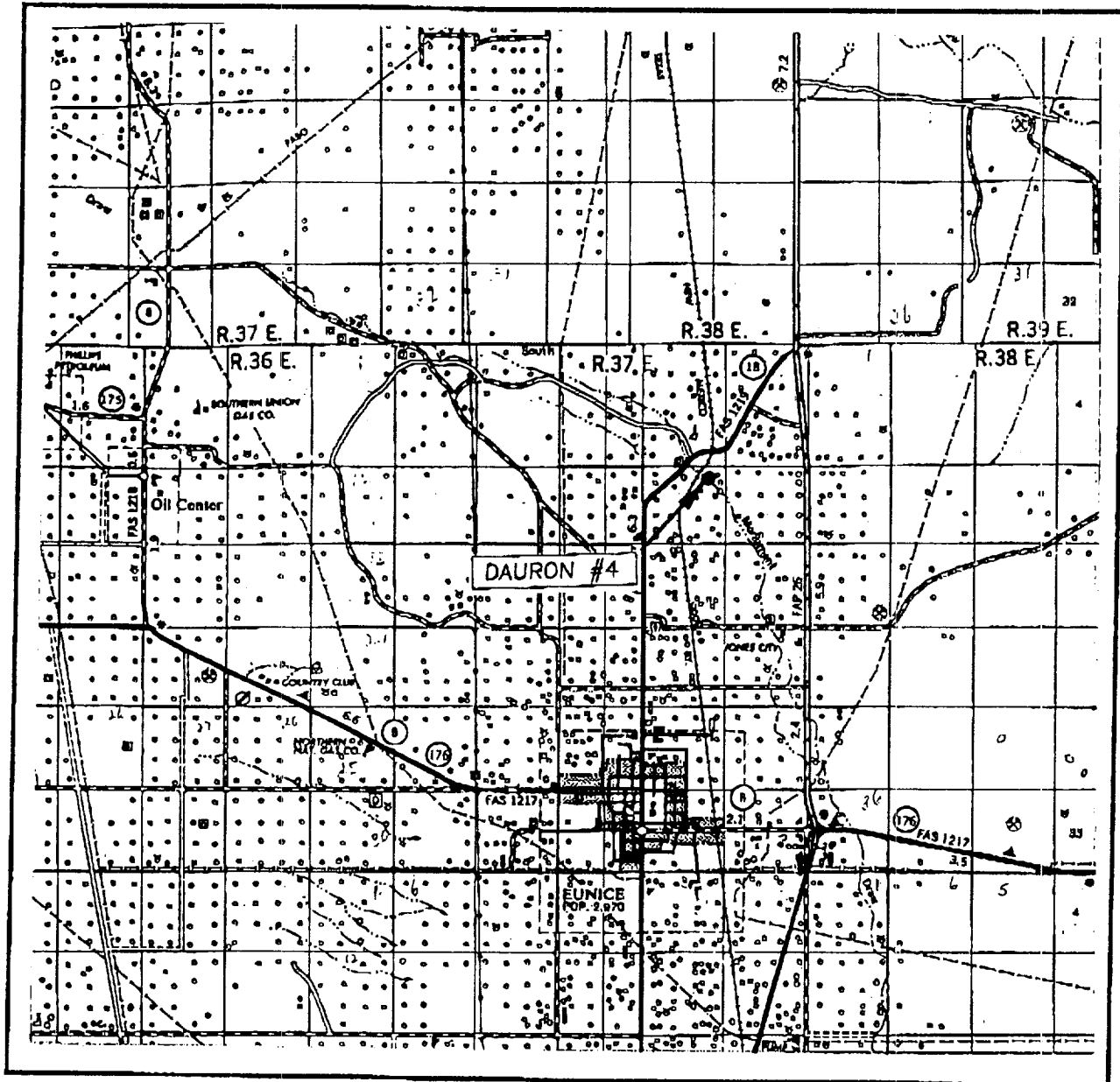
Date Surveyed
Signature & Seal of
Professional Surveyor

02.11.0300

Certificate No. RONALD J. EIDSON 3239
GARY EIDSON 12641



VICINITY MAP



SCALE: 1" = 2 MILES

SEC. 10 TWP. 21-S. RGE. 37-E

SURVEY N.M.P.M.

COUNTY LEA

DESCRIPTION 550' FNL & 740' FEL

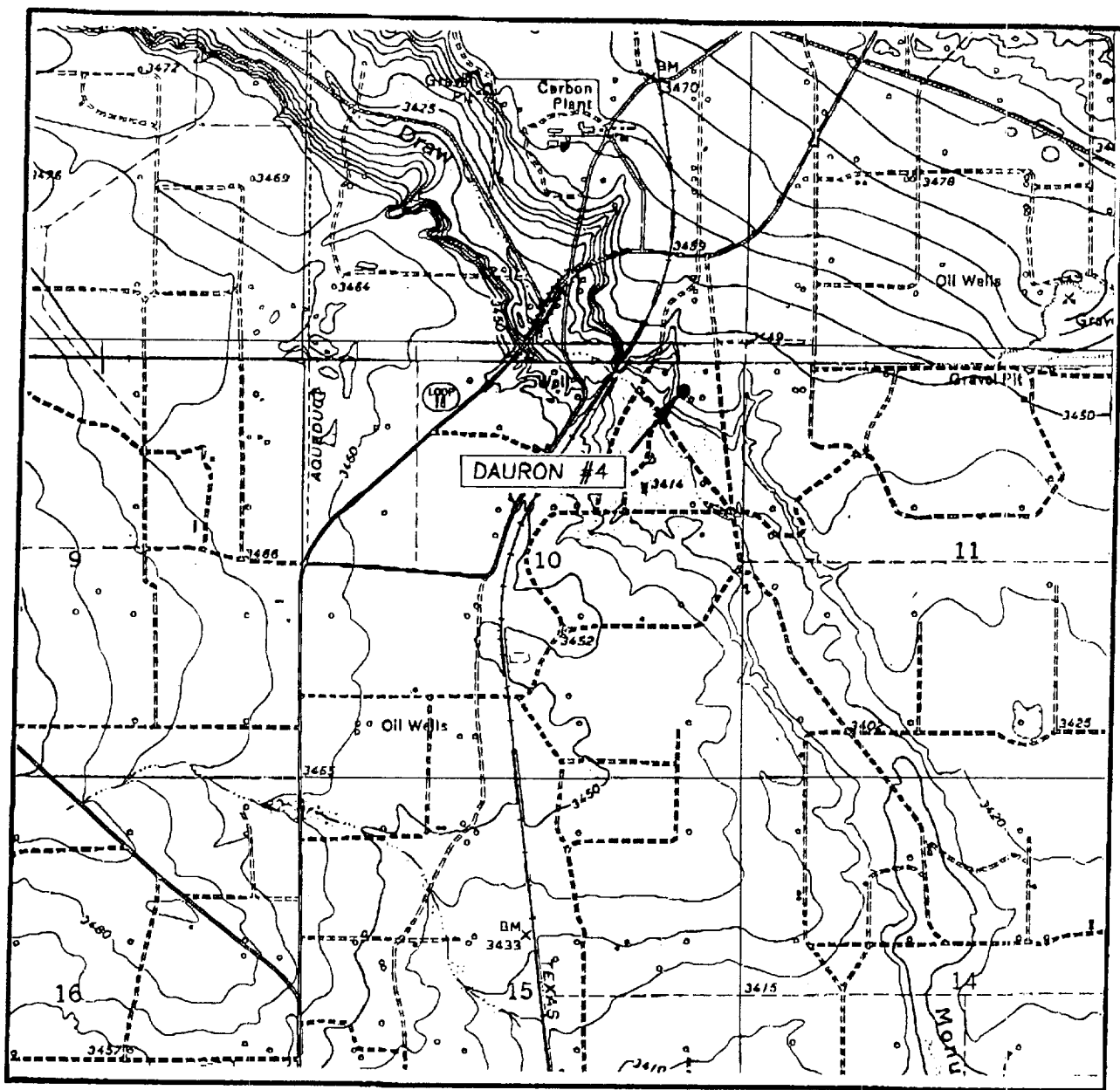
ELEVATION 3112'

OPERATOR APACHE CORPORATION

LEASE DAURON

JOHN WEST SURVEYING
HOBBS, NEW MEXICO
(505) 393-3117

LOCATION VERIFICATION MAP



SCALE: 1" = 2000'

CONTOUR INTERVAL:

EUNICE N.M. 10'

HOBBS SW, N.M. 5'

SEC. 10 TWP. 21-S RGE. 37-E

SURVEY N.M.P.M.

COUNTY LEA

DESCRIPTION 550' FNL & 740' FEL

ELEVATION 3442'

OPERATOR APACHE CORPORATION

LEASE DAURON

U.S.G.S. TOPOGRAPHIC MAP

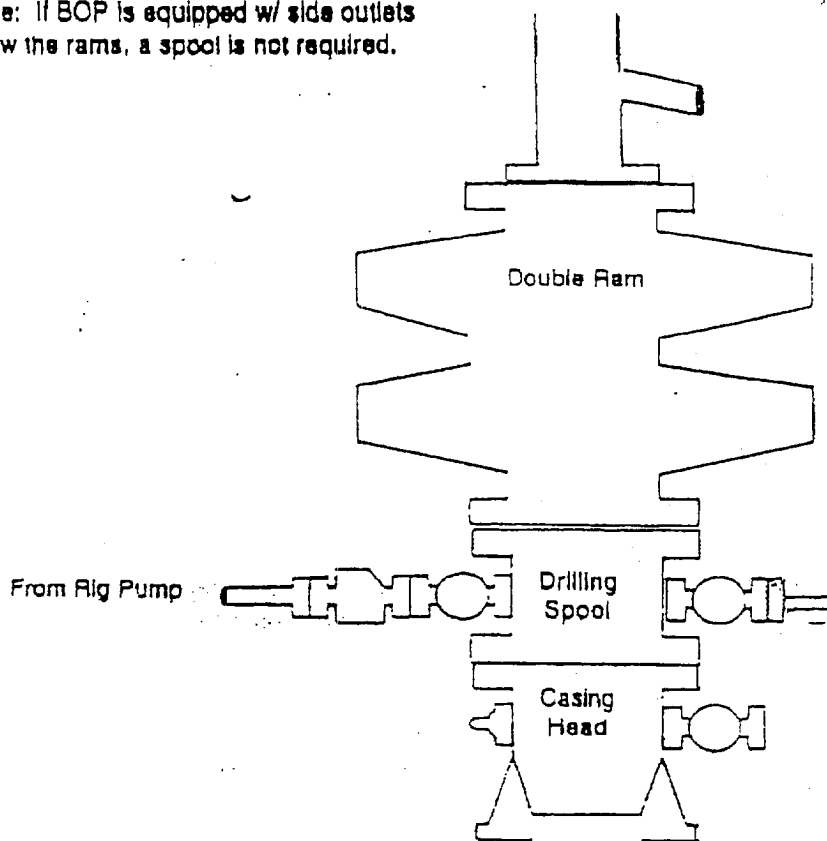
EUNICE, HOBBS SW, N.M.

JOHN WEST SURVEYING
HOBBS, NEW MEXICO
(505) 393-3117

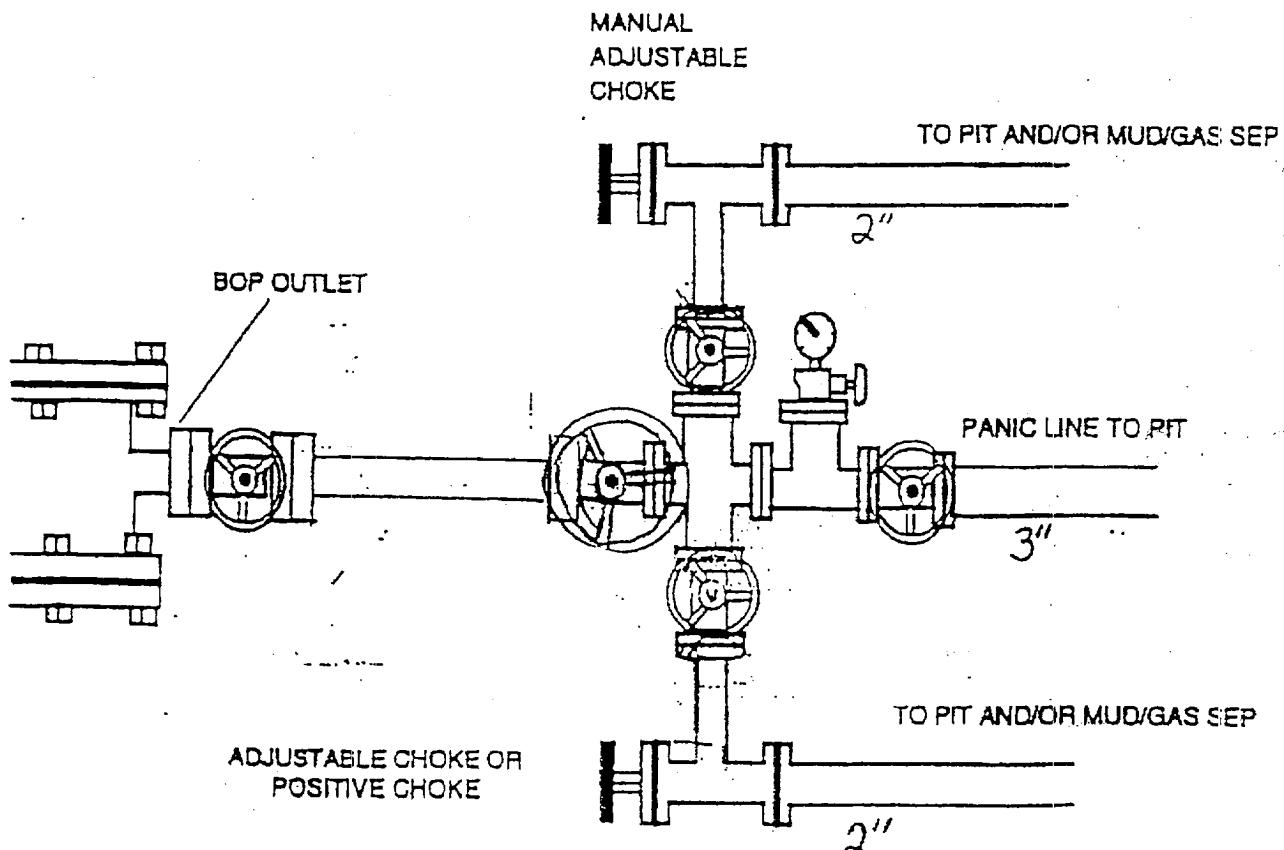
BOP Schematic

*Note: If BOP is equipped w/ side outlets below the rams, a spool is not required.

2000 psi WP Double Ram
Blow-out Preventor. Must be tested
to 1000 psi prior to drilling out
8-5/8" surface casing.



Choke Manifold Schematic



ABOVE DATE DOES NOT
INDICATE WHEN
CONFIDENTIAL LOGS
WILL BE RELEASED

6/26/62 -