

District I
1625 N. French Dr., Hobbs, NM 88240
District II
1301 W. Grand Avenue, Artesia, NM 88210
District III
1000 Rio Brazos Road, Aztec, NM 87410
District IV
1220 S. St. Francis Dr., Santa Fe, NM 87505

State of New Mexico
Energy Minerals and Natural Resources

Oil Conservation Division
1220 South St. Francis Dr.
Santa Fe, NM 87505

Form C-101
Revised March 17, 1999

Submit to appropriate District Office
State Lease - 6 Copies
Fee Lease - 5 Copies

☐ AMENDED REPORT

APPLICATION FOR PERMIT TO DRILL, RE-ENTER, DEEPEN, PLUGBACK, OR ADD A ZONE

| | | |
|--|--|---|
| ¹ Operator Name and Address Matador Operating Company 8340 Meadow Road #150 Dallas, TX 75231 | | ² OGRID Number 14245 |
| | | ³ API Number 30-025-35910 |
| ³ Property Code 29730 | ⁵ Property Name Julia "15" State Com | ⁶ Well No. 1 |

⁷ Surface Location

| UL or lot no. | Section | Township | Range | Lot Idn | Feet from the | North/South line | Feet from the | East/West line | County |
|---------------|---------|----------|-------|---------|---------------|------------------|---------------|----------------|--------|
| B | 15 | 21S | 35E | | 660 | North | 1650 | East | Lea |

⁸ Proposed Bottom Hole Location If Different From Surface

| UL or lot no. | Section | Township | Range | Lot Idn | Feet from the | North/South line | Feet from the | East/West line | County |
|---------------|---------|----------|-------|---------|---------------|------------------|---------------|----------------|--------|
| | | | | | | | | | |

| | |
|--|-------------------------------|
| ⁹ Proposed Pool 1 Osudo; Morrow, South | ¹⁰ Proposed Pool 2 |
|--|-------------------------------|

| | | | | |
|-----------------------------------|--|-----------------------------------|---|---|
| ¹¹ Work Type Code N | ¹² Well Type Code G | ¹³ Cable/Rotary R | ¹⁴ Lease Type Code PS | ¹⁵ Ground Level Elevation 3569' |
| ¹⁶ Multiple No | ¹⁷ Proposed Depth 12300' | ¹⁸ Formation Morrow | ¹⁹ Contractor Patterson-UTI | ²⁰ Spud Date 5/25/02 |

²¹ Proposed Casing and Cement Program

| Hole Size | Casing Size | Casing weight/foot | Setting Depth | Sacks of Cement | Estimated TOC |
|-----------|-------------|--------------------|---------------|-----------------|-----------------------|
| 17-1/2" | 13-3/8" | 48# | 1400' | 1000 sx | Circ to surface |
| 12-1/4" | 9-5/8" | 40# | 5500' | 1500 sx | Circ to surface (stg) |
| 8-3/4" | 7" | 26# | 11100' | 350 sx | 9000' |
| 6-1/8" | 4-1/2" | 13.5# | 12300 | 200 sx | 10000' |

²² Describe the proposed program. If this application is to DEEPEN or PLUG BACK, give the data on the present productive zone and proposed new productive zone. Describe the blowout prevention program, if any. Use additional sheets if necessary.

Drill 17-1/2" hole to $\pm 1400'$. Run/cement 13-3/8" surface casing. NU 13-5/8" 1500 psi annular. Drill 12-1/4" hole to $\pm 5500'$. Run and cement 9-5/8" intermediate casing. NU 11" 3M BOPE & test to 3000 psi. Drill 8-3/4" hole to $\pm 11100'$. Run and cement 7" production casing. NU 7-1/16" 10M BOPE and test to 10,000 psi (annular to 5000 psi). Drill 6-1/8" hole to PTD of $\pm 12300'$. Evaluate to run 4-1/2" production liner.

| | | | |
|---|--|--|--|
| ²³ I hereby certify that the information given above is true and complete to the best of my knowledge and belief. Signature: <i>Jim Kramer</i> Printed name: Jim Kramer Title: Sr. Drilling Engineer Date: 5/9/02 Phone: 214 987-7128 | | OIL CONSERVATION DIVISION Approved by: <i>PAUL F. KATZ</i> Title: PETROLEUM ENGINEER Approval: MAY 13 2002 Expiration Date: Conditions of Approval: Attached <input type="checkbox"/> | |
|---|--|--|--|

Permit Expires 1 Year From Approval
Date Unless Drilling Underway

DISTRICT I
P. O. Box 1980
Hobbs, NM 88241-1980

State of New Mexico
Energy, Minerals, and Natural Resources Department

Form C-102
Revised 02-10-94

Instructions on back

DISTRICT II
P. O. Drawer DD
Artesia, NM 88211-0719

OIL CONSERVATION DIVISION

P. O. Box 2088
Santa Fe, New Mexico 87504-2088

Submit to the Appropriate
District Office
State Lease - 4 copies
Fee Lease - 3 copies

☐ AMENDED REPORT

DISTRICT III
1000 Rio Brazos Rd.
Aztec, NM 87410

DISTRICT IV
P. O. Box 2088
Santa Fe, NM 87507-2088

WELL LOCATION AND ACREAGE DEDICATION PLAT

| | | |
|------------------------------|--|---|
| 1 API Number 30-025-35910 | 2 Pool Code 82200 | 3 Pool Name Osudo; Morrow, South (Gas) |
| 4 Property Code 29730 | 5 Property Name JULIA '15' STATE COM | 6 Well Number 1 |
| 7 OGRID No. 14245 | 8 Operator Name MATADOR Operating Company | 9 Elevation 3569' |

10 SURFACE LOCATION

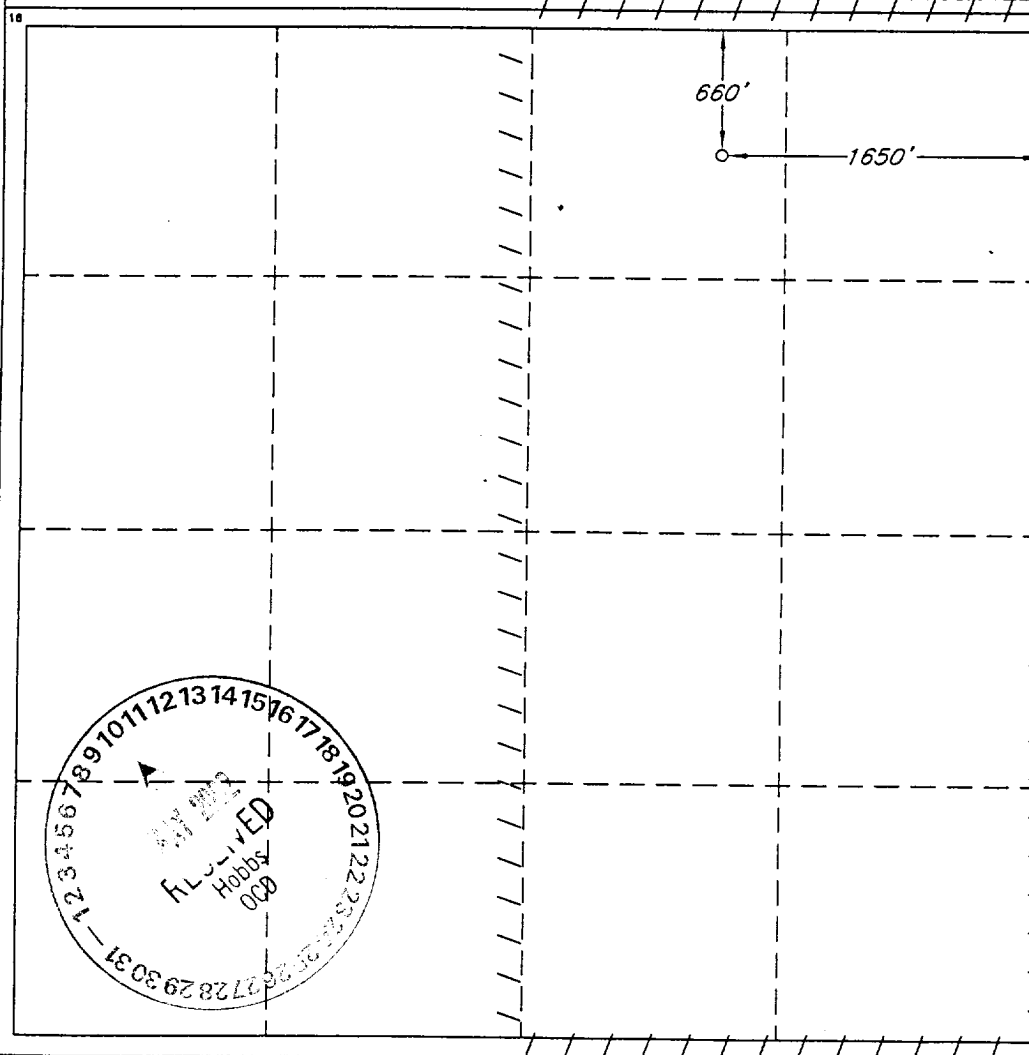
| UL or lot no. | Section | Township | Range | Lot Ida | Feet from the | North/South line | Feet from the | East/West line | County |
|---------------|---------|----------|-------------------|---------|---------------|------------------|---------------|----------------|--------|
| B | 15 | 21 SOUTH | 35 EAST, N.M.P.M. | | 660' | NORTH | 1650' | EAST | LEA |

11 BOTTOM HOLE LOCATION IF DIFFERENT FROM SURFACE

| UL or lot no. | Section | Township | Range | Lot Ida | Feet from the | North/South line | Feet from the | East/West line | County |
|---------------|---------|----------|-------|---------|---------------|------------------|---------------|----------------|--------|
| | | | | | | | | | |

| | | | |
|---------------------------|--------------------|-----------------------|--------------|
| 12 Dedicated Acres 320 | 13 Joint or Infill | 14 Consolidation Code | 15 Order No. |
|---------------------------|--------------------|-----------------------|--------------|

NO ALLOWABLE WELL BE ASSIGNED TO THIS COMPLETION UNTIL ALL INTERESTS HAVE BEEN
CONSOLIDATED OR A NON-STANDARD UNIT HAS BEEN APPROVED BY THE DIVISION



OPERATOR CERTIFICATION

I hereby certify that the information
contained herein is true and complete
to the best of my knowledge and belief.

Signature

Printed Name

Jim Kramer

Title

Sr. Drilling Engineer

Date

5/9/02

SURVEYOR CERTIFICATION

I hereby certify that the well
location shown on this plat was
plotted from field notes of actual
surveys made by me or under
my supervision, and that the
same is true and correct to the
best of my belief.

Date of Survey

MAY 3, 2002

Signature and Seal of
Professional Surveyor

 5-7-02

Certificate No.

V. L. BEZNER R.P.S. #7920

JOB # 81621 / 45 NE / J.C.P.

MATADOR OPERATING COMPANY
 JULIA "15" STATE COM #1
 660' FNL & 1650' FEL
 LEA COUNTY, NEW MEXICO

BOP SCHEMATICS
 INCLUDES BOTH 3M & 10M PSI SCHEMATIC

12-1/4" & 8-3/4" Hole Sections
 (3000 psi WP)

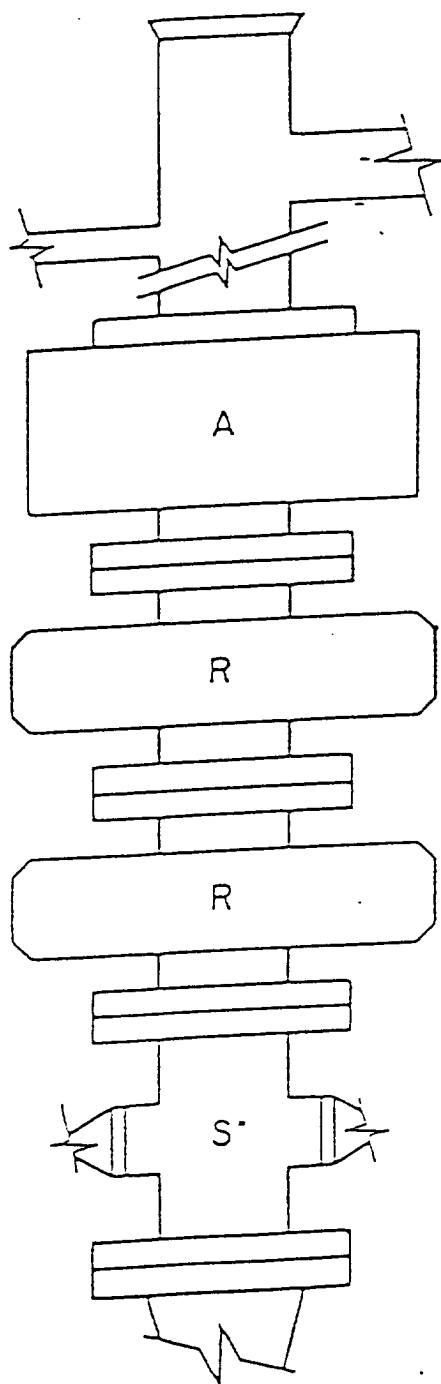


FIG. 2.C.5
 ARRANGEMENT S^{*}•R•R•A
 Double Ram Type Preventers. R_d. Optional.

6-1/8" Hole Section
 (10,000 psi WP)

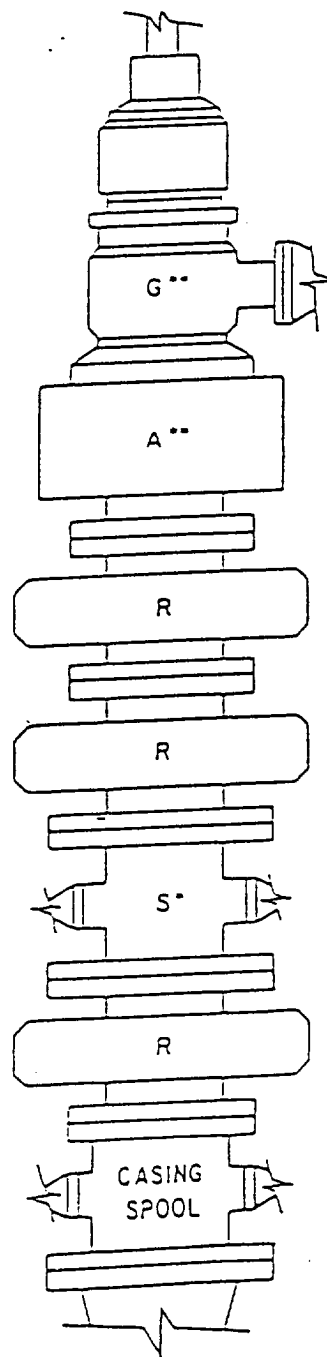
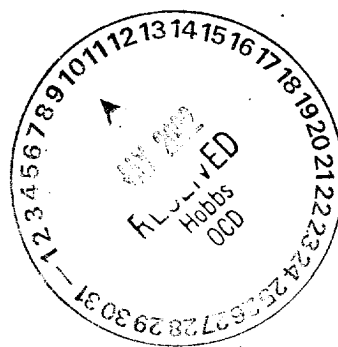
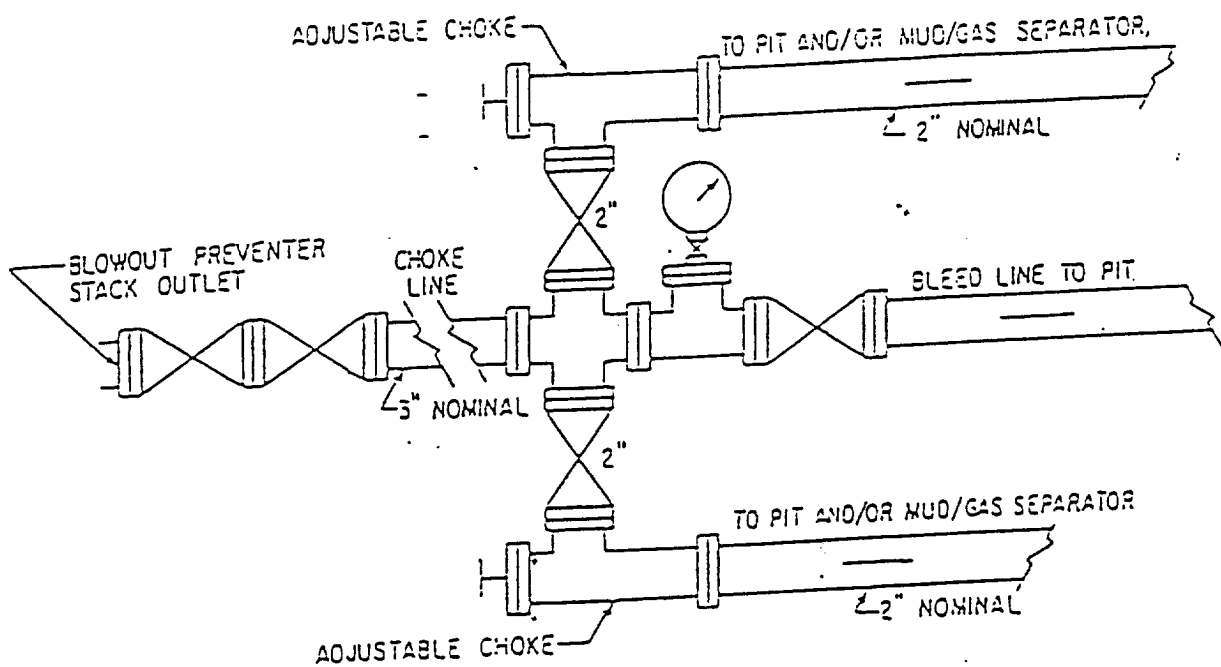


FIG. 2.C.9
 ARRANGEMENT RS^{*}•R•R•A^{**}•G^{**}
 Double Ram Type Preventers.
 R_d. Optional

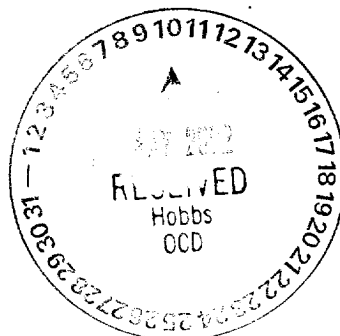


MATADOR OPERATING COMPANY
JULIA "15" STATE COM #1
660' FNL & 1650' FEL
LEA COUNTY, NEW MEXICO

3M CHOKE MANIFOLD

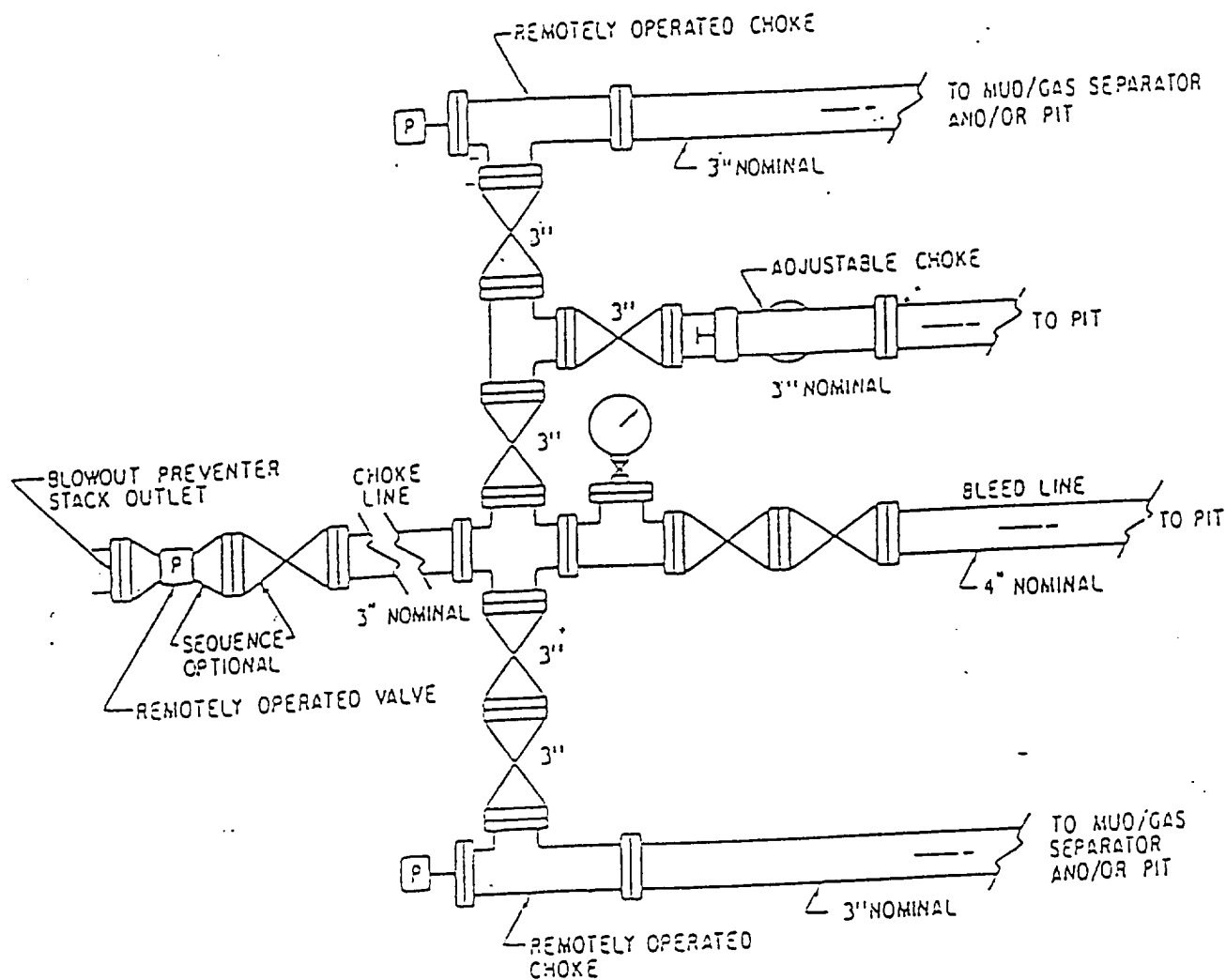


3M Choke Manifold
 Depth Interval: 1400-11100'
 Hole Size: 12-1/4" & 8-3/4"



MATADOR OPERATING COMPANY
JULIA "15" STATE COM #1
660' FNL & 1650' FEL
LEA COUNTY, NEW MEXICO

10M CHOKE MANIFOLD



10M Choke Manifold
 Depth Interval: 11100-TD
 Hole Size: 6-1/8"

