

District II
811 South First, Artesia, NM 88210

Energy, Minerals & Natural Resources Department

Revised October 18, 1994

District III
1000 Rio Brazos Rd., Aztec, NM 87410

Instructions on back
Submit to Appropriate District Office

District IV
2040 South Pacheco, Santa Fe, NM 87505

OIL CONSERVATION DIVISION 2040 South Pacheco Santa Fe, NM 87505

State Lease - 6 Copies
Fee Lease - 5 Copies

AMENDED REPORT

APPLICATION FOR PERMIT TO DRILL, RE-ENTER, DEEPEN, PLUGBACK, OR ADD A ZONE

¹ Operator Name and Address Nearburg Producing Company 3300 North "A" Street, Building 2, Ste 120 Midland, TX 79705		² OGRID Number 015742
		³ API Number 30-025-35978
⁴ Property Code 30425	⁵ Property Name Packer 7 State Com	⁶ Well No. 1

⁷Surface Location

UL or lot no.	Section	Township	Range	Lot Idn	Feet from the	North/South line	Feet from the	East/West Line	County
H	7	21S	35E		1980	North	660	East	Lea

⁸Proposed Bottom Hole Location If Different From Surface

UL or lot no.	Section	Township	Range	Lot Idn	Feet from the	North/South line	Feet from the	East/West Line	County
⁹ Proposed Pool 1 C. Sider, Wildcat, Morrow					¹⁰ Proposed Pool 2				

¹¹ Work Type Code N	¹² Well Type Code G	¹³ Cable/Rotary R	¹⁴ Lease Type Code S	¹⁵ Ground Level Elevation 3679
¹⁶ Multiple No	¹⁷ Proposed Depth 12500	¹⁸ Formation Morrow	¹⁹ Contractor Patterson	²⁰ Spud Date 11-01-2002

²¹Proposed Casing and Cement Program

Hole Size	Casing Size	Casing weight/foot	Setting Depth	Sacks of Cement	Estimated TOC
17-1/2"	13-3/8"	68#	1350'	1042 sx	Circ to surf
12-1/4"	9-5/8"	36#, 40#	5500'	500sx	Tie back 13-3/8"
8-3/4"	5-1/2"	17#, 20#	12,500'	500 sx	10,000'

²²Describe the proposed program. If this application is to DEEPEN or PLUG BACK give the data on the present productive zone and proposed new productive zone. Describe the blowout prevention program, if any. Use additional sheets if necessary.

Propose to drill the well to a sufficient depth to evaluate the Morrow formation. After reaching TD, logs will be run and casing set if the evaluation is positive. Perforate, test and stimulation as necessary to establish production.

Acreage dedication is 320 acres; E/2 of Section 7.

Permit Expires 1 Year from Approval
Date Unless Drilling Underway

²³I hereby certify that the information given above is true and complete to the best of my knowledge and belief.

Signature: *Kim Stewart*
Printed name: Kim Stewart
Title: Regulatory Analyst
Date: 08-23-2002
Phone: 915/686-8235

OIL CONSERVATION DIVISION	
Approved By:	ORIGINAL SIGNED BY PAUL F. KAUTZ PETROLEUM ENGINEER
Title:	
Approval Date:	Expiration Date:
Conditions of Approval:	Attached: <input type="checkbox"/>

S
C
A

Handwritten initials

DISTRICT I
P.O. Box 1980, Hobbs, NM 88241-1980

State of New Mexico

Energy, Minerals and Natural Resources Department

Form C-102

DISTRICT II
P.O. Drawer DD, Artesia, NM 88211-0719

Revised February 10, 1994
Submit to Appropriate District Office
State Lease - 4 Copies
Fee Lease - 3 Copies

DISTRICT III
1000 Rio Brazos Rd., Aztec, NM 87410

OIL CONSERVATION DIVISION

P.O. Box 2088
Santa Fe, New Mexico 87504-2088

DISTRICT IV
P.O. BOX 2088, SANTA FE, N.M. 87504-2088

WELL LOCATION AND ACREAGE DEDICATION PLAT

AMENDED REPORT

API Number 30-C25-35978	Pool Code 82120	Pool Name Cside Wildeat; Morrow
Property Code 3042.5	Property Name PACKER 7 State Com	Well Number 1
OGRID No. 015742	Operator Name NEARBURG PRODUCING CO.	Elevation 3679'

Surface Location

UL or lot No.	Section	Township	Range	Lot Idn	Feet from the	North/South line	Feet from the	East/West line	County
H	7	21-S	35-E		1980	NORTH	660	EAST	LEA

Bottom Hole Location If Different From Surface

UL or lot No.	Section	Township	Range	Lot Idn	Feet from the	North/South line	Feet from the	East/West line	County

Dedicated Acres 320	Joint or Infill N	Consolidation Code	Order No.
------------------------	----------------------	--------------------	-----------

NO ALLOWABLE WILL BE ASSIGNED TO THIS COMPLETION UNTIL ALL INTERESTS HAVE BEEN CONSOLIDATED OR A NON-STANDARD UNIT HAS BEEN APPROVED BY THE DIVISION

LOT 1									
35.48 AC LOT 2									
35.53 AC LOT 3									
35.57 AC LOT 4									
35.62 AC									

OPERATOR CERTIFICATION

I hereby certify the the information contained herein is true and complete to the best of my knowledge and belief.

Kim Stewart
Signature

Kim Stewart
Printed Name

Regulatory Analyst
Title

August 23, 2002
Date

SURVEYOR CERTIFICATION

I hereby certify that the well location shown on this plat was plotted from field notes of actual surveys made by me or under my supervision, and that the same is true and correct to the best of my belief.

AUGUST 12, 2002
Date Surveyed

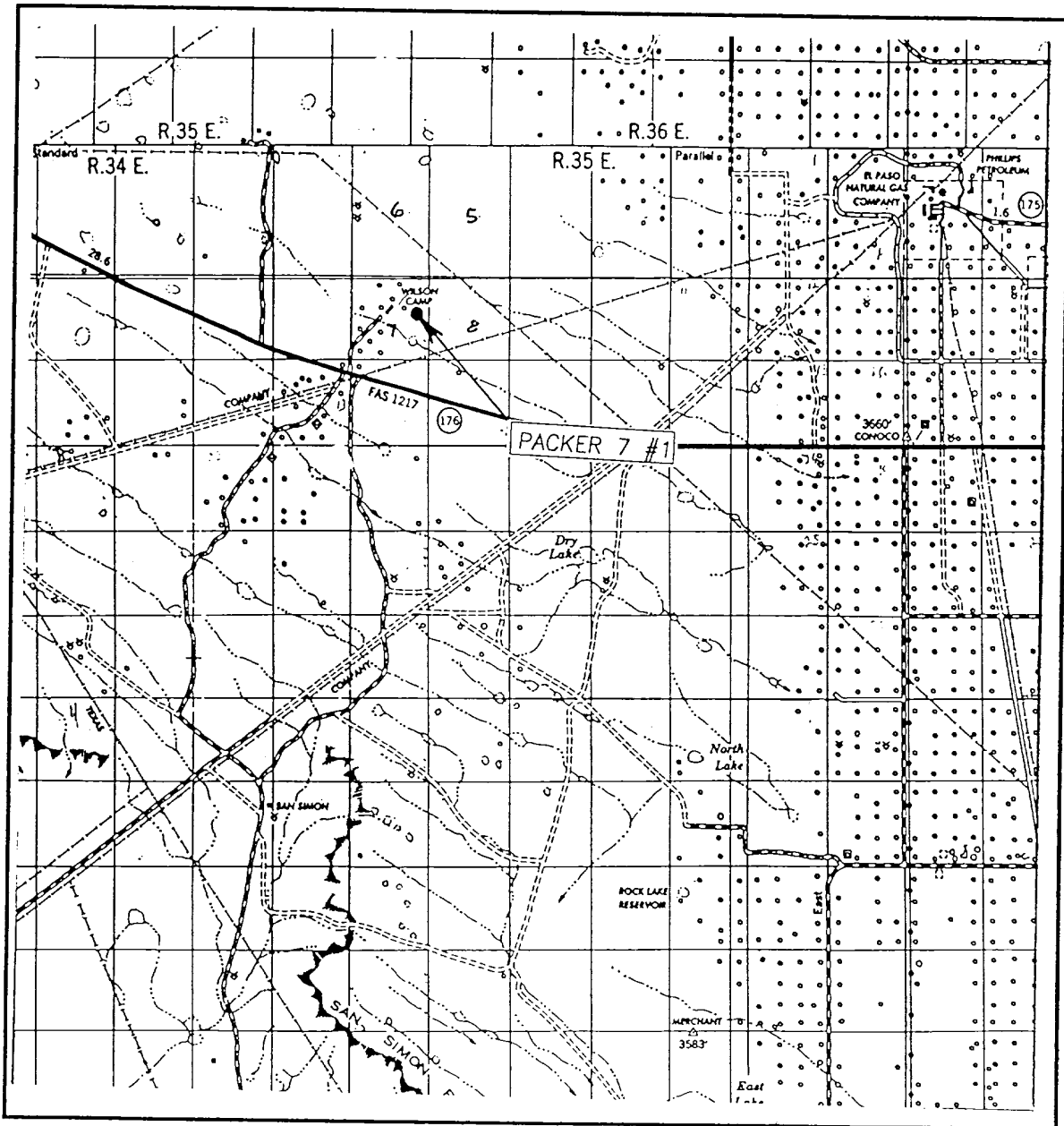
AWB

Signature & Seal of Professional Surveyor

Ronald J. Edson 8/13/02
02.11.0568

Certificate No. RONALD J. EDSON 3239
GARY EDSON 12641

VICINITY MAP



SCALE: 1" = 2 MILES

SEC. 7 TWP. 21-S RGE. 35-E

SURVEY N.M.P.M.

COUNTY LEA

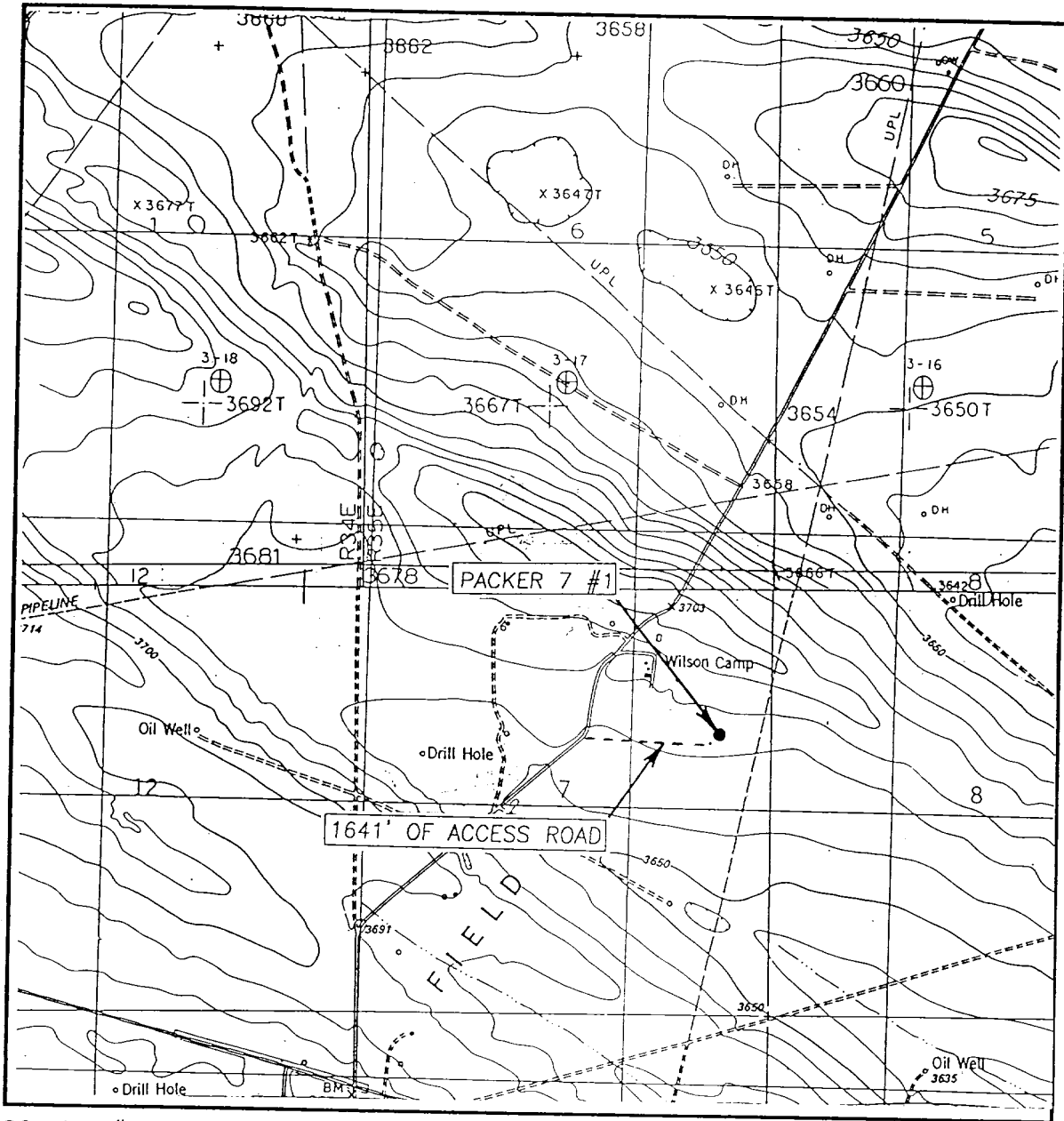
DESCRIPTION 1980' FNL & 660' FEL

ELEVATION 3679'

OPERATOR NEARBURG PRODUCING COMPANY

JOHN WEST SURVEYING
 HOBBS, NEW MEXICO
 (505) 393-3117

LOCATION VERIFICATION MAP



SCALE: 1" = 2000'

CONTOUR INTERVAL:
 SAN SIMON RANCH, N.M. 10'
 MONUMENT SW, N.M. 5'

SEC. 7 TWP. 21-S RGE. 35-E

SURVEY N.M.P.M.

COUNTY LEA

DESCRIPTION 1980' FNL & 660' FEL

ELEVATION 3679'

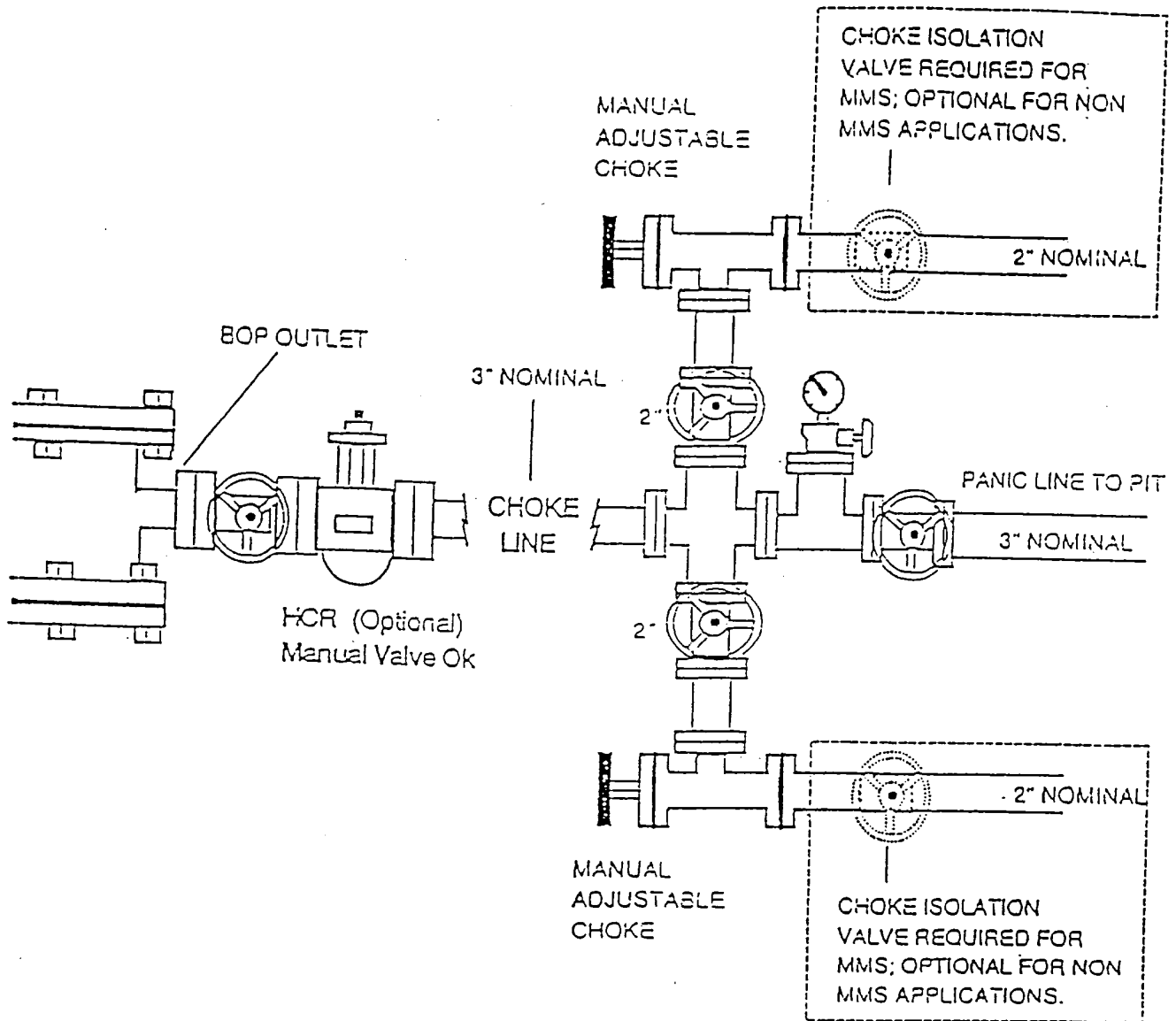
OPERATOR NEARBURG PRODUCING COMPANY

LEASE PACKER 7

U.S.G.S. TOPOGRAPHIC MAP
 SAN SIMON RANCE, MONUMENT SW, N.M.

JOHN WEST SURVEYING
 HOBBS, NEW MEXICO
 (505) 393-3117

NEARBURG PRODUCING COMPANY
CHOKE MANIFOLD
2M AND 3M SERVICE



EARBURG PRODUCING COMPANY
CHOKE MANIFOLD
5M SERVICE

