

DISTRICT I
P.O. Box 1980, Hobbs, NM 88241-1980
DISTRICT II
P.O. Box Drawer DD, Artesia, NM 88211-0719
DISTRICT III
1000 Rio Brazos Rd., Aztec, NM 87410
DISTRICT IV
P.O. Box 2088, Santa Fe, NM 87504-2088

State of New Mexico
Energy, Minerals and Natural Resources Department

OIL CONSERVATION DIVISION

P.O. Box 2088
Santa Fe, New Mexico 87504-2088

Form C-101
Revised February 10, 1999
Instructions on back
Submit to Appropriate District Office
State Lease - 6 Copies
Fee Lease - 5 Copies
☐ AMENDED REPORT

APPLICATION FOR PERMIT TO DRILL, RE-ENTER, DEEPEN, PLUGBACK, OR ADD A ZONE

¹ Operator Name and Address CHEVRON USA INC 15 SMITH ROAD, MIDLAND, TX 79705		² OGRID Number 4323
⁴ Property Code 300D14	⁵ Property Name STATE S	³ API Number 30-025-3621 ⁶ Well No. 11

⁷ Surface Location									
UI or lot no.	Section	Township	Range	Lot.Idn	Feet From The	North/South Line	Feet From The	East/West Line	County
A	15	21-S	37-E		990'	NORTH	330'	EAST	LEA

⁸ Proposed Bottom Hole Location If Different From Surface									
UI or lot no.	Section	Township	Range	Lot.Idn	Feet From The	North/South Line	Feet From The	East/West Line	County
⁹ Proposed Pool 1 Penrose SKELLY PENROSE GRAYBURG SAN ANDRES					¹⁰ Proposed Pool 2				

¹¹ Work Type Code N	¹² WellType Code O	¹³ Rotary or C.T. ROTARY	¹⁴ Lease Type Code S	¹⁵ Ground Level Elevation 3444'
¹⁶ Multiple No	¹⁷ Proposed Depth 4150'	¹⁸ Formation GRBRG SAN ANDRES	¹⁹ Contractor	²⁰ Spud Date 11/15/2002

²¹ Proposed Casing and Cement Program					
SIZE OF HOLE	SIZE OF CASING	WEIGHT PER FOOT	SETTING DEPTH	SACKS OF CEMENT	EST. TOP
11"	8 5/8"	24#	400'	250 SACKS	CIRCULATED
7 7/8"	5 1/2"	15.5#	4150'	850 SACKS	CIRCULATED

²² Describe the proposed program. If this application is to DEEPEN or PLUG BACK give the data on the present productive zone and proposed new productive zone. Describe the blowout prevention program, if any. Use additional sheets if necessary.

CEMENTING PROGRAM:

SURFACE CASING: 250 SACKS CLASS C W/2% CACL2 (14.8 PPG, CMT YIELD - 1.34) J-55 STC CSG
PRODUCTION CASING: 600 SACKS CLASS H 35/65 POZ W/6% GEL, 5% SALT, & 1/4# CELL, (12.4 PPG, CMT YIELD - 2.14)
& 250 SACKS CLASS H 50/50 POZ W/2% GEL, 5% SALT, & 1/4# CELL (14.2 PPG, CEMENT YIELD - 1.35) K-55 LTC CSG

Permit Expires 1 Year From Approval
Date Unless Drilling Underway

²³ I hereby certify that the rules and regulations of the Oil Conservation Division have been complied with and that the information given above is true and complete to the best of my knowledge and belief.		OIL CONSERVATION DIVISION	
Signature <i>Denise Leake</i>		Approved By: ORIGINAL SIGNED BY PAUL F. KAUTZ	
Printed Name Denise Leake		Title: PETROLEUM ENGINEER	
Title Regulatory Specialist		Approval Date: OCT 14 2002 Expiration Date:	
Date 10/1/2002	Telephone 915-687-7375	Conditions of Approval: Attached <input type="checkbox"/>	

DISTRICT I
P. O. Box 1980, Hobbs, NM 88240

DISTRICT II
P. O. Drawer DD, Artesia, NM 88210

DISTRICT III
1000 Rio Brazos Rd., Aztec, NM 87410

DISTRICT IV
P. O. Box 2088, Santa Fe, NM 87504-2088

State of New Mexico
Energy, Minerals and Natural Resources Department

OIL CONSERVATION DIVISION

PO Box 2088
Santa Fe, NM 87504-2088

Form C-102
Revised May 17, 2002

Instructions on back

Submit to Appropriate District Office

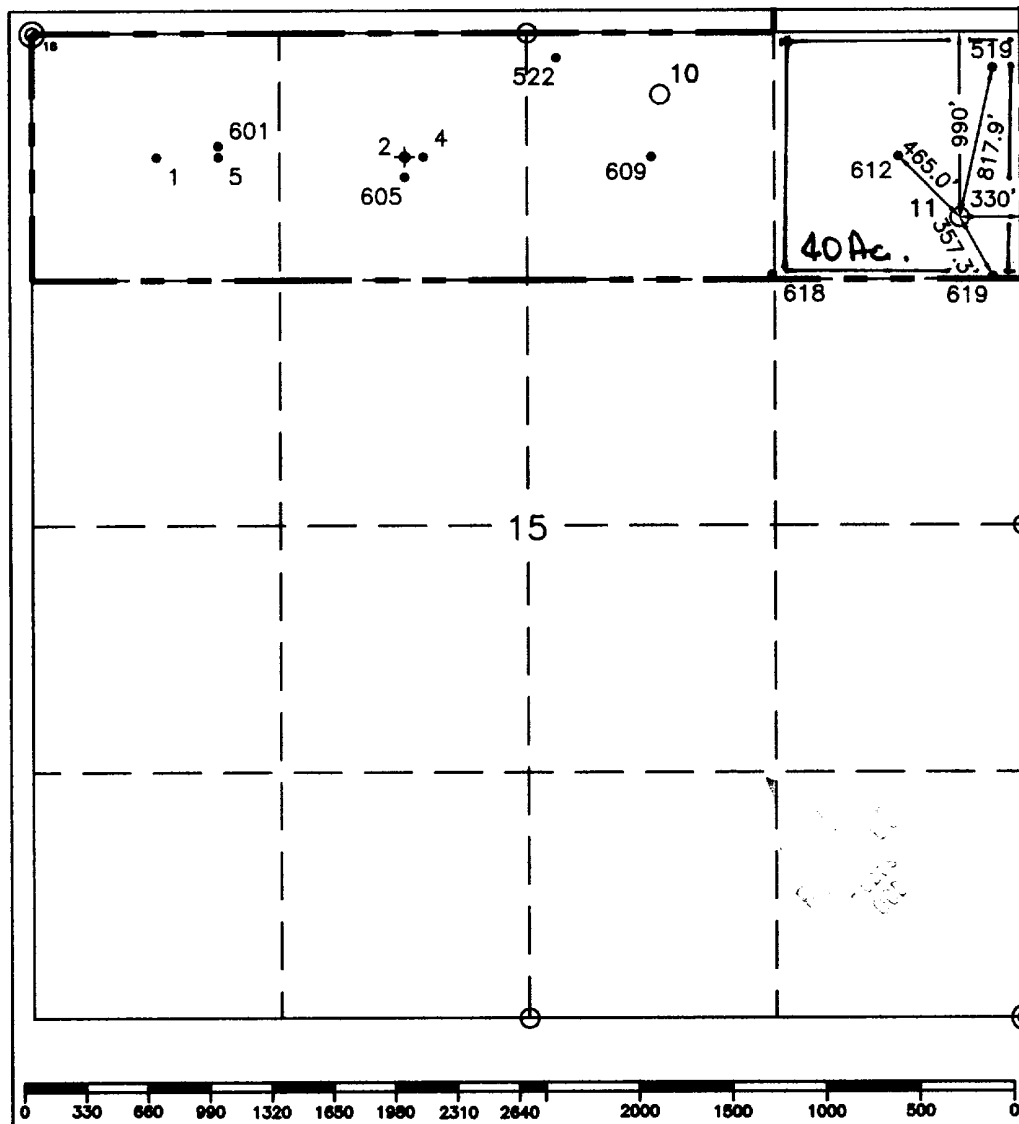
State Lease-4 copies
Fee Lease-3 copies

☐ AMENDED REPORT

WELL LOCATION AND ACREAGE DEDICATION PLAT

¹ API Number 30-025-36021		² Pool Code 50350		³ Pool Name Pentrose Steel X, Grayburg, San Andres				
⁴ Property Code 30014		⁵ Property Name State "S"			⁶ Well Number 11			
⁷ GRID No. 223514323		⁸ Operator Name CHEVRON USA, INC.			⁹ Elevation 3444'			
¹⁰ Surface Location								
UL or lot no. A	Section 15	Township 21-S	Range 37-E	Lot Idn 990'	Feet from the North/South line North	Feet from the East/West line 330'	East/West line East	County Lea
¹¹ Bottom Hole Location If Different From Surface								
UL or lot no.	Section	Township	Range	Lot Idn	Feet from the North/South line	Feet from the East/West line	County	
¹² Dedicated Acres 40		¹³ Joint or Infill		¹⁴ Consolidation Code		¹⁵ Order No.		

NO ALLOWABLE WILL BE ASSIGNED TO THIS COMPLETION UNTIL ALL INTERESTS HAVE BEEN CONSOLIDATED
OR A NON-STANDARD UNIT HAS BEEN APPROVED BY THE DIVISION.



¹⁶ OPERATOR CERTIFICATION I hereby certify that the information contained herein is true and complete to the best of my knowledge and belief.	
Signature	<i>Ted Tipton</i>
Printed Name	Ted Tipton
Position	Manager of Drilling Department
Company	Chevron USA, Inc.
Date	September 13, 2002
¹⁷ SURVEYOR CERTIFICATION I hereby certify that the well location shown on this plat was plotted from field notes of actual surveys made by me or under my supervision, and that the same is true and correct to the best of my knowledge and belief.	
Date Surveyed	September 11, 2002
Signature & Seal of Professional Surveyor	<i>John S. Piper</i>
Certificate No.	7254 John S. Piper
Sheet 1 of 1	

○ = Staked Location • = Producing Well = Injection Well ◇ = Water Supply Well ◆ = Plugged & Abandon Well
⊙ = Found Section Corner, 2 or 3" Iron Pipe & GLO B.C. ○ = Found /4 Section Corner, 1" Iron Pipe & GLO B.C.

ADDITIONAL INFORMATION ON THE LOCATION

State Plane Coordinates			
Northing 541666.69 (1927=541607.66)		Easting 908263.31 (1927=867079.31)	
Latitude 32°29'00.522" (1927=32°29'00.097")		Longitude 103°08'36.262" (1927=103°08'34.568")	
Zone	North American Datum	Combined Grid Factor	Coordinate File
East	1983/HARN	0.999897138	Weathrly.cr5
Drawing File		Field Book	
State_S_10.Dwg		Lea #23, Pg. 7	