

District I

1625 N. French Dr., Hobbs, NM 88240

District II

1301 W. Grand Avenue, Artesia, NM 88210

District III

1000 Rio Brazos Road, Aztec, NM 87410

District IV

1220 S. St. Francis Dr., Santa Fe, NM 87505

State of New Mexico

## Energy Minerals and Natural Resources

Form C-101

Revised March 17, 1999

Oil Conservation Division

1220 South St. Francis Dr.

Santa Fe, NM 87505

Submit to appropriate District Office

State Lease - 6 Copies

Fee Lease - 5 Copies

☐ AMENDED REPORT

## APPLICATION FOR PERMIT TO DRILL, RE-ENTER, DEEPEN, PLUGBACK, OR ADD A ZONE

<sup>1</sup> Operator Name and Address Nearburg Producing Co. <del>PO Box 823085</del> 3300 N A St, Bldg 2, Suite 120 Dallas, TX 75382 Midland, TX 79705		<sup>2</sup> OGRID Number 15742
<sup>3</sup> API Number 30 -		
<sup>4</sup> Property Code 27040	<sup>5</sup> Property Name Grama Ridge "23" State	<sup>6</sup> Well No. 2

<sup>7</sup> Surface Location

UL or lot no.	Section	Township	Range	Lot Idn	Feet from the	North/South line	Feet from the	East West line	County
C	23	21S	34E		990	North	1650	West	Lea

<sup>8</sup> Proposed Bottom Hole Location If Different From Surface

UL or lot no.	Section	Township	Range	Lot Idn	Feet from the	North/South line	Feet from the	East West line	County
<sup>9</sup> Proposed Pool 1 W. / Sen; Penn South						<sup>10</sup> Proposed Pool 2			

<sup>11</sup> Work Type Code N	<sup>12</sup> Well Type Code Gas	<sup>13</sup> Cable/Rotary Rotary	<sup>14</sup> Lease Type Code S	<sup>15</sup> Ground Level Elevation 3671
<sup>16</sup> Multiple No	<sup>17</sup> Proposed Depth 13100	<sup>18</sup> Formation Morrow	<sup>19</sup> Contractor Patterson UTI	<sup>20</sup> Spud Date 1/5/03

<sup>21</sup> Proposed Casing and Cement Program

Hole Size	Casing Size	Casing weight/foot	Setting Depth	Sacks of Cement	Estimated TOC
17-1/2"	13-3/8"	48#	1400'	1000	Circ to surface
12-1/4"	9-5/8"	40#	5500'	1500	Circ to surface (2-stg)
8-3/4"	7"	29#	11500'	400	9000
6-1/8"	4-1/2"	13.5	13100'	250	11200 (TOL)

<sup>22</sup> Describe the proposed program. If this application is to DEEPEN or PLUG BACK, give the data on the present productive zone and proposed new productive zone. Describe the blowout prevention program, if any. Use additional sheets if necessary.

Drill 17-1/2" hole to  $\pm$  1400'. Run/cement 13-3/8" surface casing. NU 13-5/8" 1500 psi annular. Drill 12-1/4" hole to  $\pm$  5500'. Run and cement 9-5/8" intermediate casing. NU 11" 3M BOPE and test to 3000 psi. Drill 8-3/4" hole  $\pm$  11500'. Run and cement 7" production casing. NU 7-1/16" 10M BOPE and test to 10000 psi (annular to 5000 psi). Drill 6-1/8" hole to PTD of 13100'. Evaluate to run 4-1/2" production liner.

<sup>23</sup> I hereby certify that the information given above is true and complete to the best of my knowledge and belief.

Signature:

Printed name:

Title:

Date:

Phone:

OIL CONSERVATION DIVISION

Approved by:

Title:

Approval Date:

Expiration Date:

Conditions of Approval:

Attached ☐PAUL J. K...  
PETROLEUM ENGINEER

12.16.02

915.686.8235 x203

DISTRICT I  
1625 N. French Dr., Hobbs, NM 88240

DISTRICT II  
1301 W. Grand Avenue, Artesia, NM 88210

DISTRICT III  
1000 Rio Brazos Rd., Aztec, NM 87410

DISTRICT IV  
1220 S. St. Francis Dr., Santa Fe, NM 87505

State of New Mexico

Energy, Minerals, and Natural Resources Department

OIL CONSERVATION DIVISION

1220 South St. Francis Dr.

Santa Fe, New Mexico 87505

Form C-102

Revised August 15, 2000

Submit to Appropriate District Office

State Lease - 4 copies

Fee Lease - 3 copies

☐ AMENDED REPORT

WELL LOCATION AND ACREAGE DEDICATION PLAT

<sup>1</sup> API Number	<sup>2</sup> Pool Code 87520	<sup>3</sup> Pool Name Wilson; Penn South
<sup>4</sup> Property Code 27040	<sup>5</sup> Property Name GRAMA RIDGE "23" STATE	<sup>6</sup> Well Number 2
<sup>7</sup> OGRID No. 15742	<sup>8</sup> Operator Name Nearburg Producing Co.	<sup>9</sup> Elevation 3671'

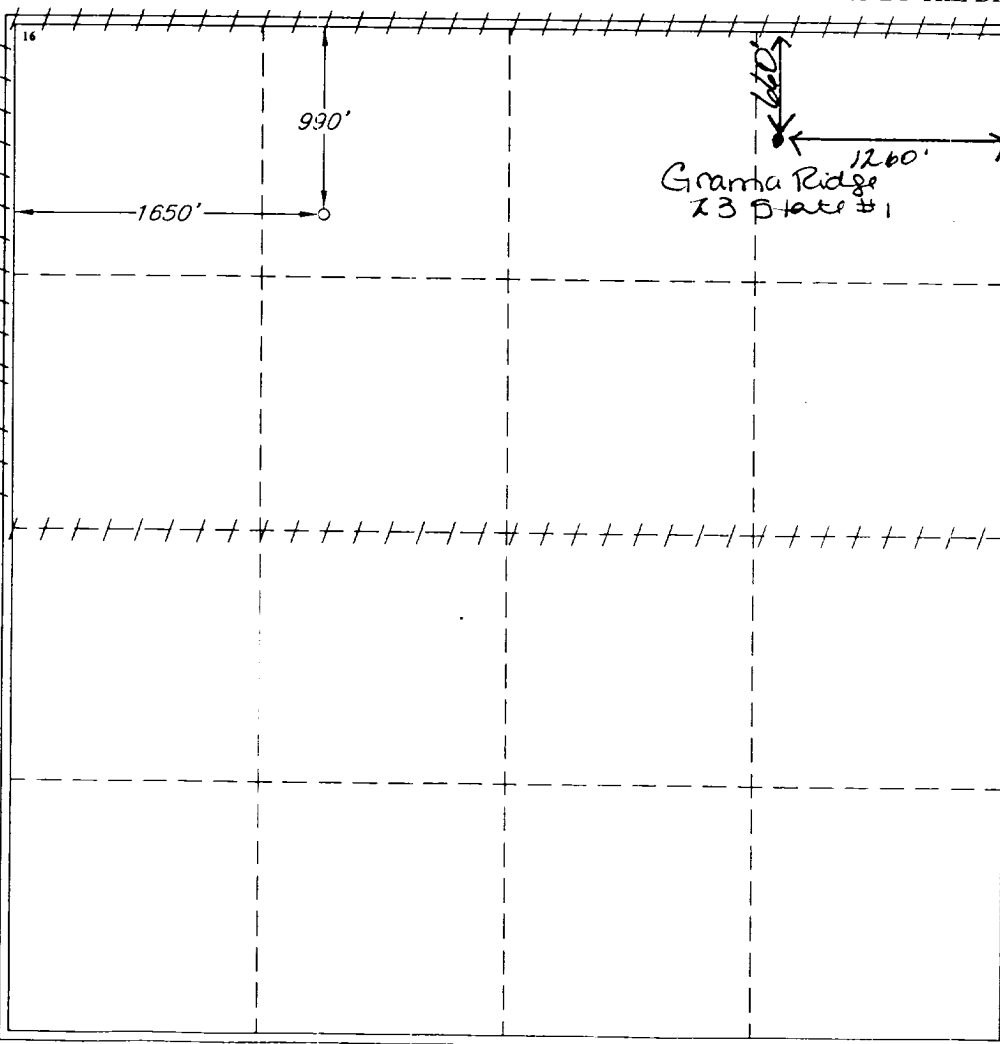
<sup>10</sup> Surface Location

UL or lot no. C	Section 23	Township 21 SOUTH	Range 34 EAST, N.M.P.M.	Lot Idn	Feet from the 990'	North/South line NORTH	Feet from the 1650'	East/West line WEST	County LEA
--------------------	---------------	----------------------	----------------------------	---------	-----------------------	---------------------------	------------------------	------------------------	---------------

<sup>11</sup> Bottom Hole Location If Different From Surface

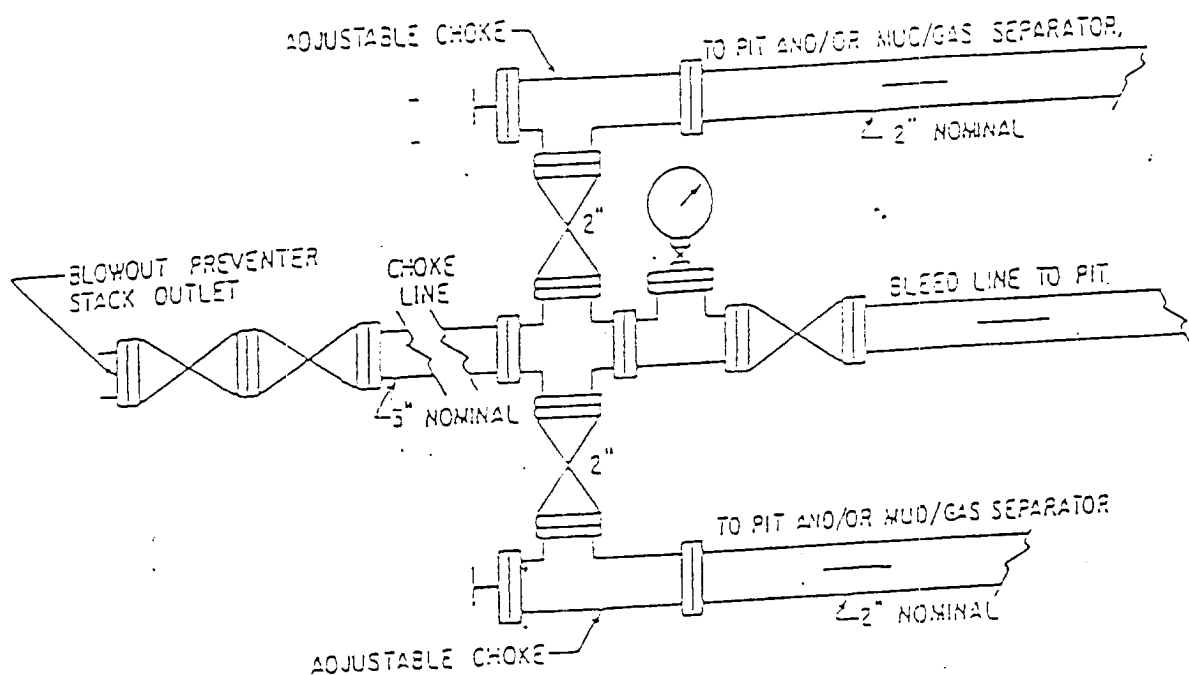
UL or lot no.	Section	Township	Range	Lot Idn	Feet from the	North/South line	Feet from the	East/West line	County
<sup>12</sup> Dedicated Acres 320	<sup>13</sup> Joint or Infill	<sup>14</sup> Consolidation Code	<sup>15</sup> Order No.						

NO ALLOWABLE WELL BE ASSIGNED TO THIS COMPLETION UNTIL ALL INTERESTS HAVE BEEN CONSOLIDATED OR A NON-STANDARD UNIT HAS BEEN APPROVED BY THE DIVISION

	<p><sup>17</sup> OPERATOR CERTIFICATION</p> <p>I hereby certify that the information contained herein is true and complete to the best of my knowledge and belief.</p> <p>Signature Sara Jordan</p> <p>Printed Name Sara Jordan</p> <p>Title Production Analyst</p> <p>Date 12-16-02</p> <p><sup>18</sup> SURVEYOR CERTIFICATION</p> <p>I hereby certify that the well location shown on this plat was plotted from field notes of actual surveys made by me or under my supervision, and that the same is true and correct to the best of my belief.</p> <p>NOVEMBER 14, 2002</p> <p>Date of Survey</p> <p>Signature and Seal of Professional Surveyor</p> <p>11-18-02</p> <p>Certificate Number V. L. BEZNER R.P.S. #7920</p> <p>JOB #84654 / 46 NW / D.C.G.</p>
---	--

NEARBURG PRODUCING CO.  
GRAMA RIDGE "23" STATE #2  
LEA COUNTY, NEW MEXICO

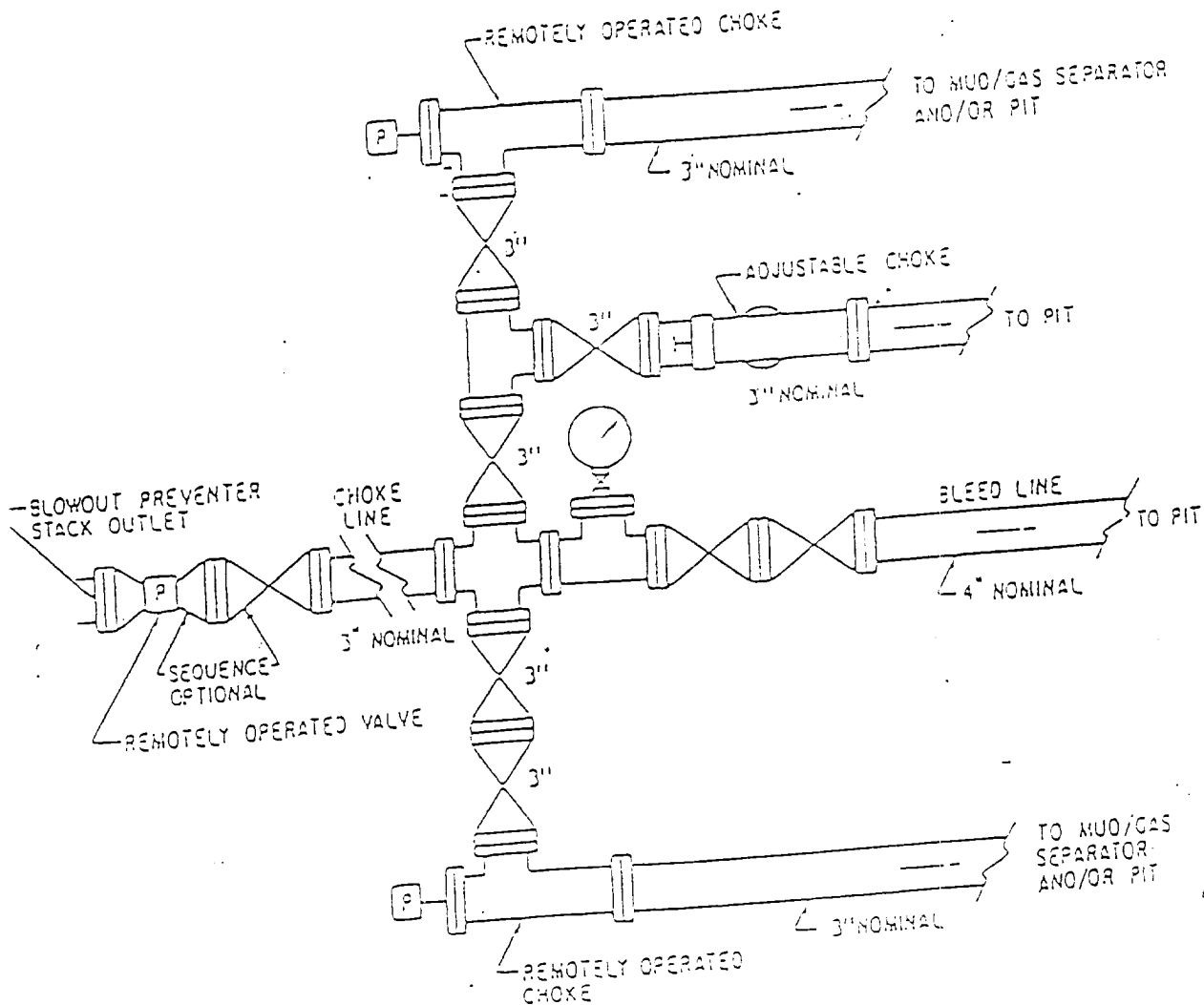
3M CHOKE MANIFOLD



3M Choke Manifold  
Depth Interval: 1400'-11500'  
Hole Size: 12-1/4" & 8-3/4"

NEARBURG PRODUCING CO.  
GRAMA RIDGE "23" STATE #2  
LEA COUNTY, NEW MEXICO

10M CHOKE MANIFOLD



10M Choke Manifold  
Depth Interval: 11500-TD  
Hole Size: 6-1/8"

NEARBURG PRODUCING CO.  
GRAMA RIDGE "23" STATE #2  
LEA COUNTY, NEW MEXICO

BOP SHEMATICS  
INCLUDES BOTH 3M & 10M PSI SCHEMATIC

12-1/4" & 8-3/4" Hole Sections  
(3000 psi WP)

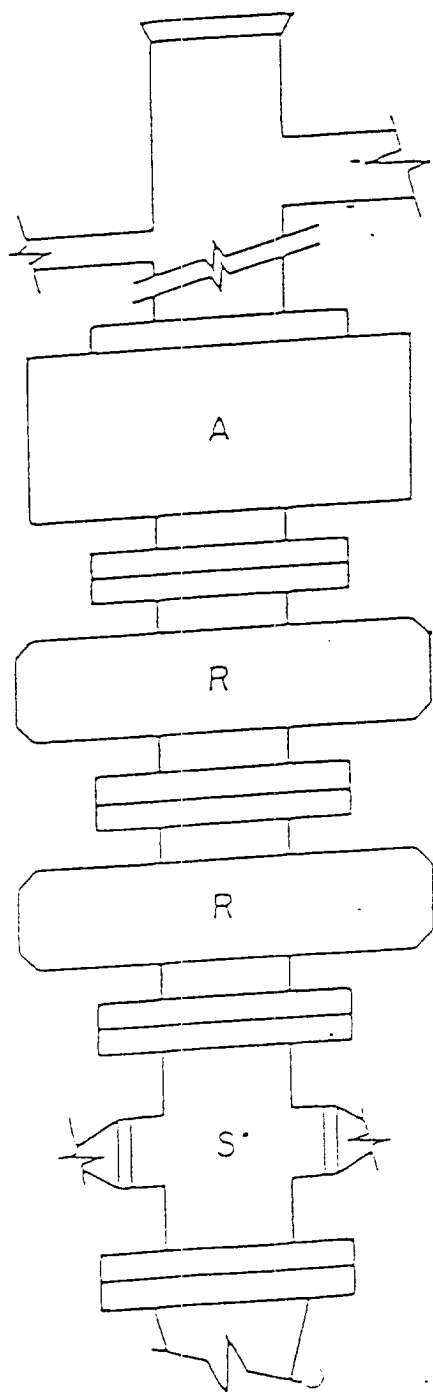


FIG. 2.C.5  
ARRANGEMENT S<sup>\*</sup>RR<sup>A</sup>  
Double Ram Type Preventers. R<sub>d</sub> Optional.

6-1/8" Hole Section  
(10,000 psi WP)

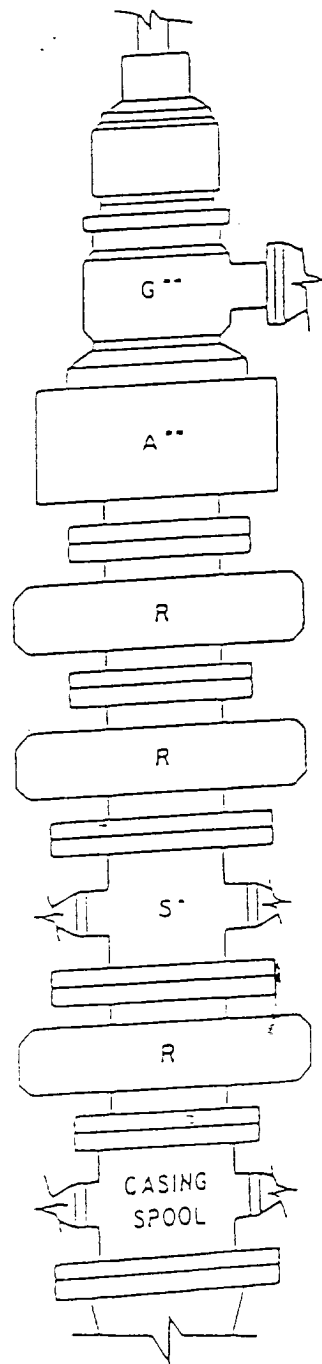


FIG. 2.C.9  
ARRANGEMENT RS<sup>\*</sup>RR<sup>A</sup>G<sup>\*\*</sup>  
Double Ram Type Preventers.  
R<sub>d</sub> Optional