

Submit to Appropriate
District Office
State Lease - 6 copies
Fee Lease - 5 copies
DISTRICT I
P.O. Box 1980, Hobbs, NM 88240

DISTRICT II
P.O. Drawer DD, Artesia, NM 88210

DISTRICT III
1000 Rio Brazos Rd., Aztec, NM 87410

State of New Mexico
Energy, Minerals and Natural Resources Department

Form C-105
Revised 1-1-89

OIL CONSERVATION DIVISION

P.O. Box 2088
Santa Fe, New Mexico 87504-2088

WELL API NO.

30025 08488

5. Indicate Type of Lease

STATE ☒ FEE ☐

6. State Oil & Gas Lease No.

E-5896-1

WELL COMPLETION OR RECOMPLETION REPORT AND LOG

1a. Type of Well:

OIL WELL ☒ GAS WELL ☐ DRY ☐ OTHER ☐

b. Type of Completion:

NEW WELL ☐ WORK OVER ☐ DEEPEN ☐ PLUG BACK ☒ DIFF RESVR ☐ OTHER ☐ Recompletion

7. Lease Name or Unit Agreement Name

Bell Lake State 1

2. Name of Operator

Conoco Inc.

3. Address of Operator

P.O. Box 460 Hobbs, NM 88240

4. Well Location

Unit Letter N : 330 Feet From The South Line and 2970 Feet From The East Line

Section

31

Township

23S

Range

34E

NMPM

Lea

County

10. Date Spudded

6-19-84

11. Date T.D. Reached

3-20-89

12. Date Compl. (Ready to Prod.)

3-22-89

13. Elevations (DF& RKB, RT, GR, etc.)

3616' 6L

14. Elev. Casinghead

15. Total Depth

15120'

16. Plug Back T.D.

11815'

17. If Multiple Compl. How Many Zones?

18. Intervals Drilled By

Rotary Tools

Cable Tools

all

19. Producing Interval(s), of this completion - Top, Bottom, Name

6800'-6820'

20. Was Directional Survey Made

yes

21. Type Electric and Other Logs Run

GR-CCL

22. Was Well Cored

no

23.

CASING RECORD (Report all strings set in well)

CASING SIZE	WEIGHT LB/FT.	DEPTH SET	HOLE SIZE	CEMENTING RECORD	AMOUNT PULLED
13 3/8"	48#	1254	already in hole		
9 5/8"	36-40#	6000	"		
7"	23-32#	12,545	"		

24.

LINER RECORD

SIZE	TOP	BOTTOM	SACKS CEMENT	SCREEN

25. TUBING RECORD

SIZE	DEPTH SET	PACKER SET

26. Perforation record (interval, size, and number)

6800', 6803', 6805', 6807', 6809', 6811'
6813', 6815', 6820' w 4/5SPF

27. ACID, SHOT, FRACTURE, CEMENT, SQUEEZE, ETC.

DEPTH INTERVAL

AMOUNT AND KIND MATERIAL USED

6800'-68200' Frac: 14,284 gls. gel 30% CO₂ w/ 2040 p.s.d.

Flush: 1660 gls. FW 30% CO₂

w/ 2040 p.s.d.

28.

PRODUCTION

Date First Production	Production Method (Flowing, gas lift, pumping - Size and type pump)	Well Status (Prod. or Shut-in)
03-10-89	Pumping	producing
Date of Test	Hours Tested	Choke Size
4-14-89	24	
Prod'n For Test Period	Oil - Bbl.	Gas - MCF
5	6	80
Flow Tubing Press.	Casing Pressure	Calculated 24-Hour Rate
Oil - Bbl.	Gas - MCF	Water - Bbl.
Oil Gravity - API - (Corr.)		

29. Disposition of Gas (Sold, used for fuel, vented, etc.)

Sold

Test Witnessed By

30. List Attachments

31. I hereby certify that the information shown on both sides of this form is true and complete to the best of my knowledge and belief

Signature

William W. Baker

Printed Name

William W. Baker

Title Admin. Super.

Date 4-27-89

(6) NMOCO-Hobbs file(1)

INSTRUCTIONS

This form is to be filed with the appropriate District Office of the Division not later than 20 days after the completion of any newly-drilled or deepened well. It shall be accompanied by one copy of all electrical and radio-activity logs run on the well and a summary of all special tests conducted, including drill stem tests. All depths reported shall be measured depths. In the case of directionally drilled wells, true vertical depths shall also be reported. For multiple completions, Items 25 through 29 shall be reported for each zone. The form is to be filed in quintuplicate except on state land, where six copies are required. See Rule 1105.

INDICATE FORMATION TOPS IN CONFORMANCE WITH GEOGRAPHICAL SECTION OF STATE

Southeastern New Mexico

T. Anhy (Rustler) 1231	T. Canyon
T. Salt	T. Strawn
B. Salt	T. Atoka
T. Yates	T. Miss 13610
T. 7 Rivers	T. Devonian 14926
T. Queen	T. Silurian
T. Grayburg	T. Montoya
T. San Andres	T. Simpson
T. Glorieta	T. McKee
T. Paddock	T. Ellenburger
T. Blinebry	T. Gr. Wash
T. Tubb	T. Delaware Sand 5194
T. Drinkard	T. Bone Springs 8657
T. Abo	T.
T. Wolfcamp 11531	T.
T. Penn 12535	T.
T. Cisco (Bough C)	T.

Northwestern New Mexico

T. Ojo Alamo _____	T. Penn. "B" _____
T. Kirtland-Fruitland _____	T. Penn. "C" _____
T. Pictured Cliffs _____	T. Penn. "D" _____
T. Cliff House _____	T. Leadville _____
T. Menefee _____	T. Madison _____
T. Point Lookout _____	T. Elbert _____
T. Mancos _____	T. McCracken _____
T. Gallup _____	T. Ignacio Otzte _____
Base Greenhorn _____	T. Granite _____
T. Dakota _____	T. _____
T. Morrison _____	T. _____
T. Todilto _____	T. _____
T. Entrada _____	T. _____
T. Wingate _____	T. _____
T. Chinle _____	T. _____
T. Permian _____	T. _____
T. Penn "A" _____	T. _____

OIL OR GAS SANDS OR ZONES

No. 1, from.....to.....
No. 2, from.....to.....
No. 3, from.....to.....
No. 4, from.....to.....

IMPORTANT WATER SANDS.

Include data on rate of water inflow and elevation to which water rose in hole.

No. 1, from.....to.....feet.....
No. 2, from.....to.....feet.....
No. 3, from.....to.....feet.....

LITHOLOGY RECORD (Attach additional sheet if necessary)

From	To	Thickness in Feet	Lithology	From	To	Thickness in Feet	Lithology

APR 28 1964

100-100000

**NEW MEXICO OIL CONSERVATION COMMISSION
WELL LOCATION AND ACREAGE DEDICATION PLAT**

Form C-102
Supersedes C-128
Effective 1-1-65

All distances must be from the outer boundaries of the Section.

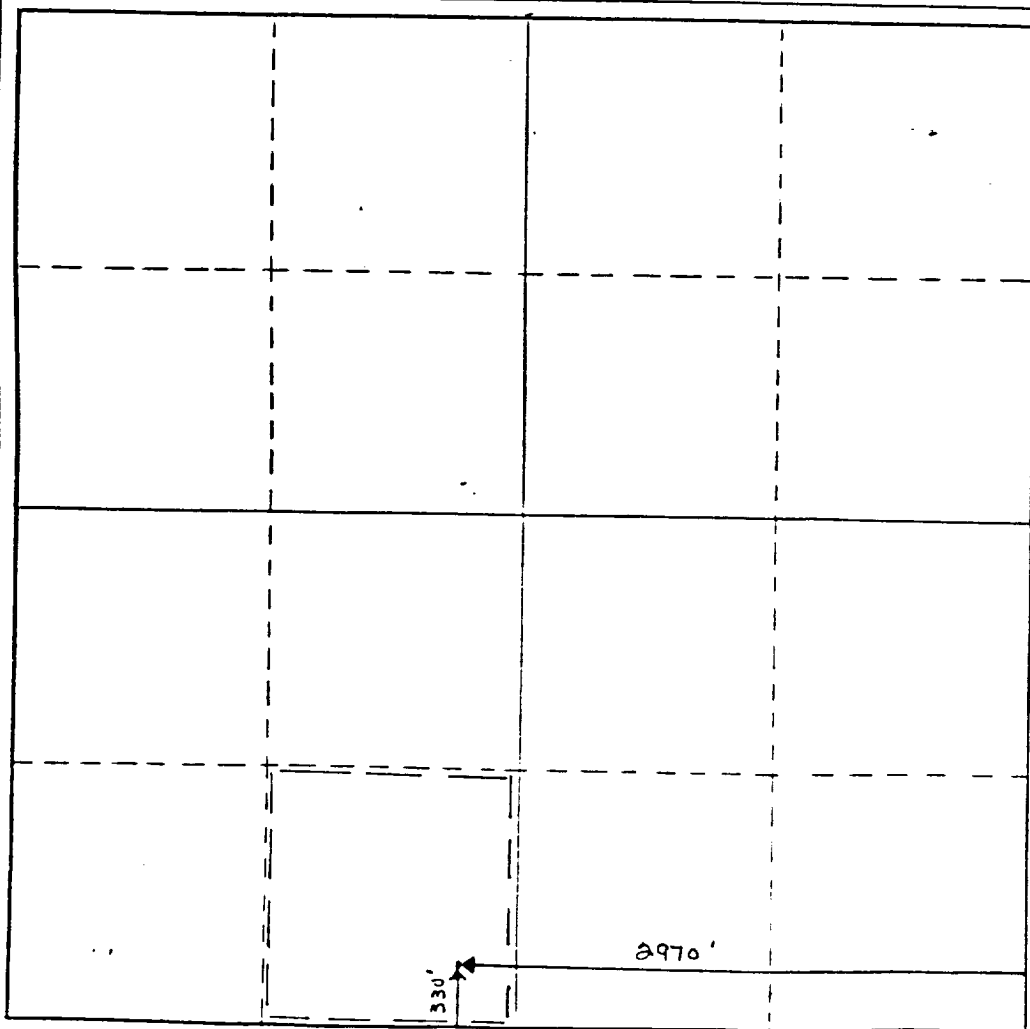
Operator Conoco Inc.			Lease Bell Lake State 1		Well No. 1
Unit Letter N	Section 31	Township 23S	Range 34E	County Lea	
Actual Footage Location of Well: 330 feet from the South line and 2970 feet from the East line					
Ground Level Elev. 3616'	Producing Formation Cherry Canyon		Pool Bell Lake Cherry Canyon	Dedicated Acreage: 40 Acres	

1. Outline the acreage dedicated to the subject well by colored pencil or hatchure marks on the plat below.
2. If more than one lease is dedicated to the well, outline each and identify the ownership thereof (both as to working interest and royalty).
3. If more than one lease of different ownership is dedicated to the well, have the interests of all owners been consolidated by communitization, unitization, force-pooling, etc?

☐ Yes ☐ No If answer is "yes," type of consolidation _____

If answer is "no," list the owners and tract descriptions which have actually been consolidated. (Use reverse side of this form if necessary.) _____

No allowable will be assigned to the well until all interests have been consolidated (by communitization, unitization, forced-pooling, or otherwise) or until a non-standard unit, eliminating such interests, has been approved by the Commission.



CERTIFICATION

I hereby certify that the information contained herein is true and complete to the best of my knowledge and belief.

Name D.F. Finney
Position Adm. Supervisor
Company Conoco Inc.
Date 11/23/88

I hereby certify that the well location shown on this plat was plotted from field notes of actual surveys made by me or under my supervision, and that the same is true and correct to the best of my knowledge and belief.

Date Surveyed _____

Registered Professional Engineer and/or Land Surveyor

Certificate No. _____

RECEIVED

APR 28 1989

OLD
HONAS OFFICE