

Re-Cmp 5-4-72		CLASS		0WDF EL 34315	
		FORMATION	DATUM	FORMATION	DATUM
CSG & SX - TUBING 8 5/8" at 313' w/200 SX 5 1/2" at 3797' w/600 SX					
LOGS EL GR RA IND HC A					
TP (Yates) P 6 8125		TD 3806'; PSD 3390'			

Distribution limited and publication prohibited by subscribers' agreement.  
Reproduction rights reserved by Williams & Lee Scouting Service, Inc.

CONT. \_\_\_\_\_ PROP DEPTH 3390' TYPE WO  
DATE \_\_\_\_\_

F.R.C. 6-10-72; Opr's Elev. 3422' GL  
PD 3390' WO (Yates)  
(Orig. Olsen Oils, Inc. #1 King, Emery, comp  
5-27-59 thru (Queen) Perfs 3690-3758',  
OTD 3806', OPB 3767'; GWWO & Re-Cmp 3-1-60  
thru (Queen) Perfs 3644-3707', OTD 3806',  
OPB 3709')  
6-5-72 TD 3806'; PBD 3390'; COMPLETE  
PB to 3390'  
Perf @ 3125', 3129', 3134', 3140', 3151', 3156',  
3159', 3162', 3170', 3179', 3182', 3187', 3192',  
3194', 3212', 3222', 3227', 3232', 3237', 3240',  
3242', 3245', 3248', 3261', 3263', 3266', 3268'

---

LEA                                      Jalmat                      NM      Sec 1,T23S,R36E  
TEXAS PACIFIC OIL CO.              4   King, N. W.                      Page #2

---

6-5-72      Continued  
             3273', 3283', 3292', 3315', 3317', 3333',  
             3353' w/1 SPI  
             Acid (3125-3353') 1500 gals  
             Frac (3125-3353') 20,000 gals jelled wtr +  
             30,000# sd  
6-10-72      COMPLETION REPORTED

**NEW MEXICO OIL CONSERVATION COMMISSION  
WELL LOCATION AND ACREAGE DEDICATION PLAT**

Form C-102  
Supersedes C-128  
Effective 1-1-65

All distances must be from the outer boundaries of the Section.

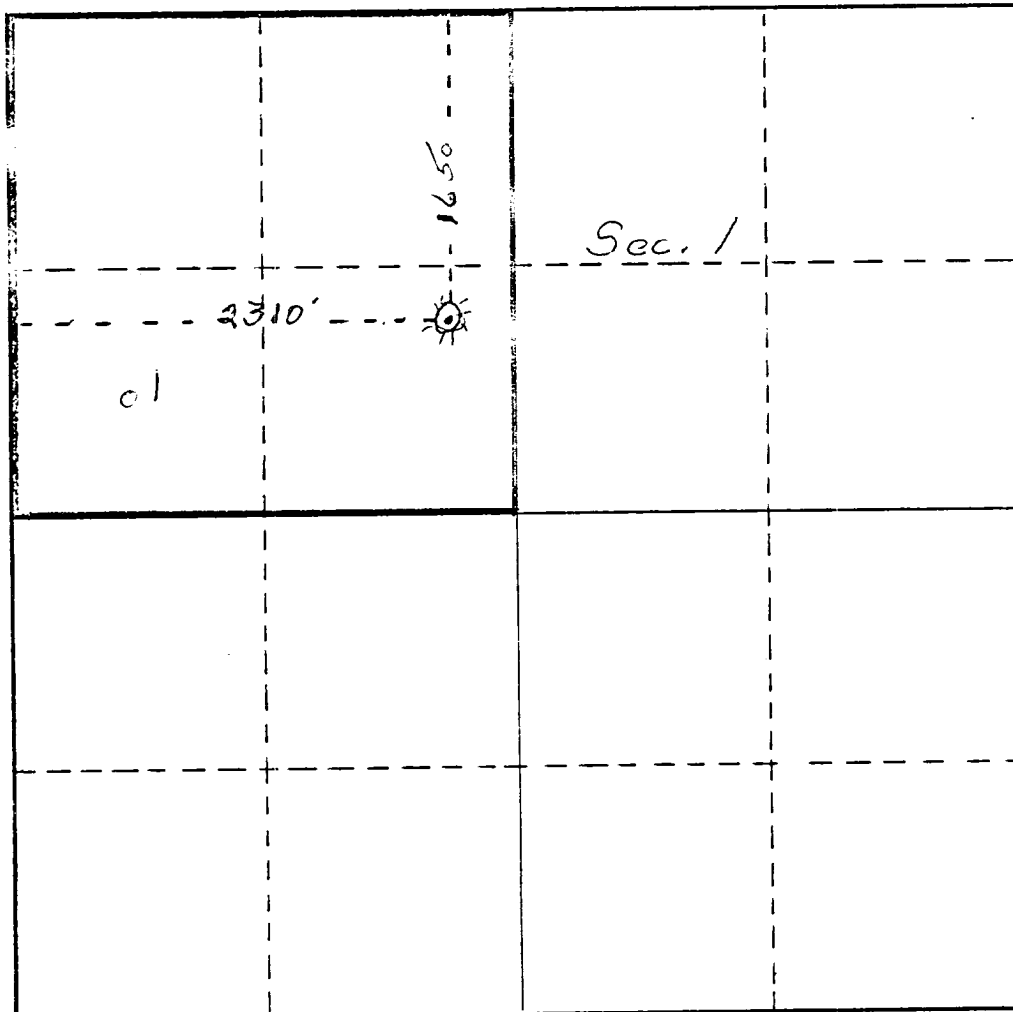
Operator <b>TEXAS PACIFIC OIL COMPANY, INC.</b>			Lease <b>KING N. W.</b>		Well No. <b>4</b>
Unit Letter <b>F</b>	Section <b>1</b>	Township <b>23-S</b>	Range <b>36-E</b>	County <b>Lea</b>	
Actual Footage Location of Well: <b>2310</b> feet from the <b>West</b> line and <b>1650</b> feet from the <b>North</b> line					
Ground Level Elev. <b>3422.7</b>	Producing Formation <b> Yates Gas</b>	Pool <b>JAimat</b>	Dedicated Acreage: <b>160</b> Acres		

1. Outline the acreage dedicated to the subject well by colored pencil or hachure marks on the plat below.
2. If more than one lease is dedicated to the well, outline each and identify the ownership thereof (both as to working interest and royalty).
3. If more than one lease of different ownership is dedicated to the well, have the interests of all owners been consolidated by communitization, unitization, force-pooling, etc?

☐ Yes    ☐ No    If answer is "yes," type of consolidation \_\_\_\_\_

If answer is "no," list the owners and tract descriptions which have actually been consolidated. (Use reverse side of this form if necessary.) \_\_\_\_\_

No allowable will be assigned to the well until all interests have been consolidated (by communitization, unitization, forced-pooling, or otherwise) or until a non-standard unit, eliminating such interests, has been approved by the Commission.



**CERTIFICATION**

*I hereby certify that the information contained herein is true and complete to the best of my knowledge and belief.*

Name  
**C. R. Tilley**

Position  
**Area Production Foreman**

Company  
**TEXAS PACIFIC OIL CO. INC.**

Date  
**5-22-72**

*I hereby certify that the well location shown on this plat was plotted from field notes of actual surveys made by me or under my supervision, and that the same is true and correct to the best of my knowledge and belief.*

Date Surveyed \_\_\_\_\_

Registered Professional Engineer and/or Land Surveyor \_\_\_\_\_

Certificate No. \_\_\_\_\_

